



Catalog

Spare parts for block contactors, R contactors, softstarters and arc guard

Contents Overview

[Spare parts block contactors](#)

1

[Spare parts R contactors](#)

2

[Spare parts softstarters](#)

3

[Spare parts arc guard](#)

4

Block contactors

Active products

Main contact sets	1/2
Arc chutes	1/2
Contactors coils	1/3
Spare parts cover	1/4
Spare parts bottom	1/5

Classic products

3-pole contactors type EH	1/6
Drive contactors type EHDB	1/7
Main contact sets	1/8
Connection sets	1/9
Arc Chute	1/10
Terminal shrouds (LT...)	1/10
Terminal extensions (LX...)	1/11
Terminal enlargements (LW...)	1/11
Terminal connecting strips ((LY)	1/11
Mounting plates	1/12
Adapter plates	1/13
Mechanical and electrical interlocking units	1/14
Mechanical latching units	1/14
Contactors coils	1/15
Surge suppressors	1/16
Auxiliary contact blocks	1/17

Main contact sets

Description

The contact sets for 3-pole contactors consists of six fixed contacts, three moving contacts, springs and the required screws.

Ordering details

For contactors	Type	Order code	Pkg qty	Weight (1 pce) kg
A/AF95-30	ZL95	1SFN164303R1000	1	0.190
A/AF110-30	ZL110	1SFN164503R1000	1	0.190
A/AF145	ZL145	1SFN164703R1000	1	0.380
A/AF185	ZL185	1SFN164903R1000	1	0.380
A/AF210	ZL210	1SFN165103R1000	1	0.670
A/AF260	ZL260	1SFN165303R1000	1	0.670
A/AF300	ZL300	1SFN165503R1000	1	0.670
AF400	ZL400	1SFN165703R1000	1	1.320
AF460	ZL460	1SFN165903R1000	1	1.320
AF580	ZL580	1SFN166103R1000	1	1.840
AF750	ZL750	1SFN166303R1000	1	1.840
AF1250	ZL1250	1SFN166403R1000	1	1.840
AF1350	ZL1350	1SFN166503R1000	1	2.500
AF1650	ZL1650	1SFN166703R1000	1	3.500
AF2050	ZL2050	1SFN167003R1000	1	3.500
AF2650 (1)	ZL2650	1SFN166603R1000	1	1.200

1) Do not include fixed parts or screws

Arc chutes

Ordering details

For contactors	Type	Order code	Pkg qty	Weight (1 pce) kg
A145 ... A185 and AF145 ... AF185	ZW185	1SFN164710R1000	1	0.360
A210 ... A300 and AF210 ... AF300	ZW300	1SFN165110R1000	1	0.410
AF400, AF460	ZW460	1SFN165710R1000	1	1.380
AF580, AF750, AF1250	ZW750	1SFN166110R1000	1	1.500
AF1350, AF1650, AF2050	ZW1650	1SFN166510R1000	1	4.000
AF2650	ZW2650	1SFN166610R1000	1	4.000



ZA185

1SFT186099-010C3



ZAF110

1SBC0578665F0002



ZAF300

1SFT186001-13



ZAF1650

1SFC1010070201

Contactors coils type ZA

Description

Coils for A95 ... A300 AC operated contactors

Ordering details

For contactors	Rated control circuit		Type	Order code	Pkg qty	Weight (1 pce) kg
	Voltage Uc (1)					
	V 50 Hz	V 60 Hz				
A 95, A 110	24	24	ZA110	1SFN154310R8106	1	0.170
UA 95, UA 110	48	48	ZA110	1SFN154310R8306	1	0.170
UA 95..RA, UA 110..RA	110	110 ... 120	ZA110	1SFN154310R8406	1	0.170
	220 ... 230	230 ... 240	ZA110	1SFN154310R8006	1	0.170
	230 ... 240	240 ... 260	ZA110	1SFN154310R8806	1	0.170
	380 ... 400	400 ... 415	ZA110	1SFN154310R8506	1	0.170
	400 ... 415	415 ... 440	ZA110	1SFN154310R8606	1	0.170
A 145 ... A 185	24	24	ZA185	1SFN154710R8106	1	0.180
	48	48	ZA185	1SFN154710R8306	1	0.180
	110	110 ... 120	ZA185	1SFN154710R8406	1	0.180
	220 ... 230	230 ... 240	ZA185	1SFN154710R8006	1	0.180
	230 ... 240	240 ... 260	ZA185	1SFN154710R8806	1	0.180
	380 ... 400	400 ... 415	ZA185	1SFN154710R8506	1	0.180
	400 ... 415	415 ... 440	ZA185	1SFN154710R8606	1	0.180
A 210 ... A 300	24	24	ZA300	1SFN155110R8106	1	0.400
	48	48	ZA300	1SFN155110R8306	1	0.400
	110	110 ... 120	ZA300	1SFN155110R8406	1	0.400
	220 ... 230	230 ... 240	ZA300	1SFN155110R8006	1	0.400
	230 ... 240	240 ... 260	ZA300	1SFN155110R8806	1	0.400
	380 ... 400	400 ... 415	ZA300	1SFN155110R8506	1	0.400
	400 ... 415	415 ... 440	ZA300	1SFN155110R8606	1	0.400

Contactors coils type ZAF

Description

Coils for AF95 ... AF2050 AC/DCoperated contactors

Ordering details

For contactors	Rated control circuit		Type	Order code	Pkg qty	Weight (1 pce) kg
	Voltage Uc (1)					
	V 50/60 Hz	V DC				
AF95, AF110	-	20 ... 60	ZAF110	1SFN154370R7206	1	0.200
	48 ... 130	48 ... 130	ZAF110	1SFN154370R6906	1	0.200
	100 ... 250	100 ... 250	ZAF110	1SFN154370R7006	1	0.200
AF145, AF185	-	20 ... 60	ZAF185	1SFN154770R7206	1	0.225
	48 ... 130	48 ... 130	ZAF185	1SFN154770R6906	1	0.225
	100 ... 250	100 ... 250	ZAF185	1SFN154770R7006	1	0.225
AF210 ... AF300	-	20 ... 60	ZAF300	1SFN155170R7206	1	0.450
	48 ... 130	48 ... 130	ZAF300	1SFN155170R6906	1	0.450
	100 ... 250	100 ... 250	ZAF300	1SFN155170R7006	1	0.450
AF400, AF460	-	24 ... 60	ZAF460	1SFN155770R6806	1	0.525
	48 ... 130	48 ... 130	ZAF460	1SFN155770R6906	1	0.525
	100 ... 250	100 ... 250	ZAF460	1SFN155770R7006	1	0.525
	250 ... 500	250 ... 500	ZAF460	1SFN155770R7106	1	0.525
AF580 ... AF1250	-	24 ... 60	ZAF750	1SFN156170R6806	1	1.335
	48 ... 130	48 ... 130	ZAF750	1SFN156170R6906	1	1.335
	100 ... 250	100 ... 250	ZAF750	1SFN156170R7006	1	1.335
	250 ... 500	250 ... 500	ZAF750	1SFN156170R7106	1	1.335
AF1350 ... AF2050	100 ... 250	100 ... 250	ZAF1650 (1)	1SFN156570R7026	1 set	0.900
			ZP1650 (2)	1SFN166521R1070	1	0.300

(1) One set of two coil

(2) Printed circuit board

Active products

Active products

Spare part cover

Ordering details

For contactor type	Type	Order code	Pkg qty	Weight (1 pce) kg
A145		1SFN165503R9201		0.365
A185		1SFN165503R9203		0.365
A210		1SFN165503R9205		0.520
A260		1SFN165503R9207		0.520
A300		1SFN165503R9209		0.520
AF145		1SFN165503R9202		0.365
AF185		1SFN165503R9204		0.365
AF210		1SFN165503R9206		0.520
AF260		1SFN165503R9208		0.520
AF300		1SFN165503R9210		0.520
AF400		1SFN165503R9211		1.455
AF460		1SFN165503R9212		1.455
AF580		1SFN165503R9213		1.655
AF750		1SFN165503R9214		1.655
AF1250		1SFN165503R9215		1.655
AF1350		1SFN165503R9216		2.475
AF1350T		1SFN165503R9217		2.475
AF1650		1SFN165503R9218		2.475
AF1650T		1SFN165503R9219		2.475
AF2050		1SFN165503R9220		2.475
AF2050T		1SFN165503R9221		2.475
AF2650		1SFN165503R9222		2.475
AF2650T		1SFN165503R9223		2.475

Spare part bottom

Ordering details

For contactor type	Type	Order code	Pkg qty	Weight (1 pce) kg
A145	Incl. terminal bars	1SFN165503R9231		1.310
A185	Incl. terminal bars	1SFN165503R9233		1.310
A210	Incl. terminal bars	1SFN165503R9235		1.960
A260	Incl. terminal bars	1SFN165503R9237		1.960
A300	Incl. terminal bars	1SFN165503R9239		1.960
AF145	Incl. terminal bars	1SFN165503R9232		1.310
AF185	Incl. terminal bars	1SFN165503R9234		1.310
AF210	Incl. terminal bars	1SFN165503R9236		1.960
AF260	Incl. terminal bars	1SFN165503R9238		1.960
AF300	Incl. terminal bars	1SFN165503R9240		1.960
AF400	Incl. terminal bars	1SFN165503R9241		4.635
AF460	Incl. terminal bars	1SFN165503R9241		4.635
AF580	Incl. terminal bars	1SFN165503R9243		5.135
AF750	Incl. terminal bars	1SFN165503R9243		5.135
AF1250	Incl. terminal bars and fixed contacts	1SFN165503R9245		6.215
AF1350	Incl. terminal bars and fixed contacts	1SFN165503R9246		18.060
AF1650	Incl. terminal bars and fixed contacts	1SFN165503R9246		18.060
AF2050	Incl. terminal bars and fixed contacts	1SFN165503R9248		18.305
AF2650 (1)	Base part (plastic)	1SFN165503R9249		9.300

(1) No terminal bars or fixed contacts included.

3-pole contactors type EH
Ordering details

Type code	Type	Order code	Pkg qty	Weight (1 pce) kg
EH175-30-11	EH175	SK825401-□□		4.700
EH175-30-21	EH175	SK825401-E□		4.700
EH175-30-22	EH175	SK825411-□□		4.700
EH210-30-11	EH210	SK825402-□□		4.700
EH210-30-21	EH210	SK825402-E□		4.700
EH210-30-22	EH210	SK825412-E□		4.700
EH260-30-11	EH260	SK826402-□□		6.200
EH260-30-21	EH260	SK826402-E□		6.200
EH260-30-22	EH260	SK826412-□□		6.200
EH300-30-11	EH300	SK826401-□□		6.250
EH300-30-21	EH300	SK826401-E□		6.250
EH300-30-22	EH300	SK826411-□□		6.250
EH370-30-11	EH370	SK827004-□□		12.400
EH370-30-22	EH370	SK827030-□□		12.400
EH550-30-11	EH550	SK827005-□□		12.400
EH550-30-22	EH550	SK827031-□□		12.400
EH700-30-11	EH700	SK828004-□□		17.100
EH700-30-22	EH700	SK828030-□□		17.100
EH800-30-11	EH800	SK828005-□□		17.300
EH800-30-22	EH800	SK828031-□□		17.300
EH1200-30-11	EH1200	SK828006-□□		18.000
EH1200-30-22	EH1200	SK828032-□□		18.000

Coil voltage codes

Contactor types	Standard voltages		Code	
	V (50 Hz)	V (60 Hz)	□	□
EH175...EH800 EK110...EK550	-	110	A	E
	110	120	A	F
	-	208	A	Z
	190	220	A	H
	-	240	A	K
	220-230	- ¹⁾	A	L
	230-240	-	A	M
	380-400	440	A	P
	400-415	-	A	R
	-	480	A	S
440	-	A	T	
¹⁾ Read 240 V for EH370...EH800 and EK370...EK550				
Contactor types	V d.c.	Code		
		□	□	
EH370...EH1200	24	D	B	
EH370...EH1200	110	D	E	
EK110...EK550	125	D	U ²⁾	
EK110...EK550	220	D	F ²⁾	

²⁾ N/A for EH1200

Dual frequency coils				
2 auxiliary contact blocks maximum per contactor, ambient temperature ≥ 50° C and mounting positions 2 and 6 excluded.				
Contactor types	V (50 Hz) V (60 Hz)		Code	
	□	□	□	□
EH370...EH1200	220	220-240	E	L
EK370...EK550	220-230	230-255	E	M ²⁾
-	-	208	A	Z
²⁾ N/A for EH1200				
Multi-frequency coils				
Contactor types	V (40-400 Hz)	Code		
		□	□	
EH175...EH300	220-230	E	L	
EK110...EK210	230-240	E	M	

Drive contactors type EHDB
Ordering details

Type code	Type	Order code	Pkg qty	Weight (1 pce) kg
2-pole contactors (2NO)				
EHDB220-20-11	EHDB220	SK825484-□□		4.000
EHDB280-20-11	EHDB280	SK825486-□□		4.000
EHDB360-20-11	EHDB360	SK826484-□□		5.700
EHDB520-20-11	EHDB520	SK827084-□□		12.100
EHDB650-20-11	EHDB650	SK827086-□□		12.100
EHDB800-20-11	EHDB800	SK828084-□□		16.800
EHDB960-20-11	EHDB960	SK828086-□□		17.000
3-pole contactors (2NO + 1NC) 300 V DC dynamic braking				
EHDB220-21-11	EHDB220	SK825485-□□		4.000
EHDB280-21-11	EHDB280	SK825487-□□		4.000
EHDB360-21-11	EHDB360	SK826485-□□		5.700
EHDB520-21-11	EHDB520	SK827085-□□		12.100
EHDB650-21-11	EHDB650	SK827087-□□		12.100
EHDB800-21-11	EHDB800	SK828085-□□		16.800
EHDB960-21-11	EHDB960	SK828087-□□		17.000

Coil voltage codes

Contactor types	Standard voltages		Code	
	V (50 Hz)	V (60 Hz)	□	□
EHDB	110	120	A	F
	-	208	A	Z
	-	240	A	K
	220-230	240	A	L
	230-240	-	A	M
	400-415	-	A	R
	110-115	-	G	G (1)

(1) Include surge suppressor and 2NO+2NC forceable controlled auxiliary contacts.

Main contact sets

Ordering details

For contactor type	Type	Order code	Pkg qty	Weight (1 pce) kg
Main contact sets for 3-pole contactors type EH				
EH175	KZ175	SK825200-B		0.500
EH210	KZ210	SK825200-A		0.500
EH260	KZ260	SK826200-B		0.600
EH300	KZ300	SK826200-A		0.600
EH370	KZ370	SK827200-D		1.800
EH55	KZ550	SK827200-C		1.800
EH700	KZ700	SK828200-D		2.000
EH800	KZ800	SK828200-C		2.000
EH1200	KZ1200	SK828200-E		
Main contact sets for single pole NC contactors type EHDB				
EHDB220	KZD220NC	SK825202-A	1 set	
EHDB280	KZD280NC	SK825202-B	1 set	
EHDB360	KZD360NC	SK826202-A	1 set	
EHDB520	KZD520NC	SK827202-A	1 set	
EHDB650	KZD650NC	SK827202-B	1 set	
EHDB800	KZD800NC	SK828202-A	1 set	
EHDB960	KZD960NC	SK828202-B	1 set	
Main contact sets for 2-pole NO contactors type EHDB				
EHDB220	KZD220NO	SK825203-A	1 set	
EHDB280	KZD280NO	SK825203-B	1 set	
EHDB360	KZD360NO	SK826203-A	1 set	
EHDB520	KZD520NO	SK827203-A	1 set	
EHDB650	KZD650NO	SK827203-B	1 set	
EHDB800	KZD800NO	SK828203-A	1 set	
EHDB960	KZD960NO	SK828203-B	1 set	
Main contact sets for 4-pole contactors type EK				
EK110	KZK110	SK824204-A		0.450
EK150	KZK150	SK824204-B		0.450
EK175	KZK175	SK825204-A		0.700
EK210	KZK210	SK825204-B		0.700
EK370	KZK370	SK827204-A		2.400
EK550	KZK550	SK827204-B		2.400
EK1000	KZK1000	SK827204-F		

Connection sets

Ordering details

For contactor type	Type	Order code	Pkg qty	Weight (1 pce) kg
Connection for reversing contactors				
EH175, EH210	BSH210	SK829091-D		1.100
EH260, EH300	BSH300	SK829091-E		2.500
EH370, EH550	BSH550	SK829091-F		5.600
EH700	BSH700	SK829091-G		6.400
EH800	BSH800	SK829091-H		6.400
EH1200				
Connection for 4-pole chageover contactors				
EK110	BSS100	SK829090-B		0.400
EK150	BSS145	SK829090-F		0.700
EK175, EK210	BSS210	SK829090-G		1.000
EK370, EK550	BSS550	SK829090-E		3.600
EK1000	BSS1000	SK829090-H		5.500
Connection for 4-pole start-delta starters				
EH145 > A110	BED145	SK820092-L		0.700
EH175 > EH145	BSD210	SK829092-E		1.200
EH210 > EH175				1.200
EH300 > EH210	BSD300	SK829092-F		2.000
EH370 > EH260				4.800
EH550 > EH300	BSD550	SK829092-G		4.800
EH700 > EH550	BSD700	SK829092-H		6.600
EH800 > EH550	BSD800	SK829092-K		6.600

Arc chute

Ordering details

For contactor type	Type	Order code	Pkg qty	Weight (1 pce) kg
Arc chute for 3-pole contactors type EH				
EH175	KW175	5223351-AD		0.820
EH210	KW210	5223351-AE		0.820
EH260	KW260	5223351-AF		1.070
EH300	KW300	5223351-AG		1.070
EH370	KW370	5223351-L		2.360
EH550	KW550	5223351-M		2.360
EH700	KW700	5223351-N		2.890
EH800	KW800	5223351-P		2.890
EH1200	KW1200	5223354-H		
Arc chute for 2-pole contactors type EHDB				
EHDB220	KWD220-2P	5223353-B	1 set	
EHDB280	KWD280-2P	5223353-C	1 set	
EHDB360	KWD360-2P	5223353-D	1 set	
EHDB520	KWD520-2P	5223353-E	1 set	
EHDB650	KWP650-2P	5223353-F	1 set	
EHDB800	KWP800-2P	5223353-G	1 set	
EHDB960	KWP960-2P	5223353-H	1 set	
Arc chute for 3-pole contactors type EHDB				
EHDB220	KWD220-3P	5223352-B	1 set	
EHDB280	KWD280-3P	5223352-C	1 set	
EHDB360	KWD360-3P	5223352-D	1 set	
EHDB520	KWD520-3P	5223352-E	1 set	
EHDB650	KWP650-3P	5223352-F	1 set	
EHDB800	KWP800-3P	5223352-G	1 set	
EHDB960	KWP960-3P	5223352-H	1 set	
Arc chute for 4-pole contactors type EK				
EK110	KWK110	5223351-AH		0.660
EK150	KWK150	5223351-AK		0.660
EK175	KWK175	5223351-AL		1.260
EK210	KWK210	5223351-AM		1.260
EK370	KWK370	5223351-Y		3.170
EK550	KWK550	5223351-Z		3.170
EK1000	KWK1000	5223351-AN		3.170

Terminal shrouds

Ordering details

Mounting on contactors	Type	Order code	Pkg qty	Weight (1 pce) kg
EH145 ... EH210	LT210-EL	SK178001-CB		0.060
EH145 ... EH210	LT210-EC	SK178003-CB		0.057
EH260, EH300	LT300-E	SK178001-DB		0.157
EH370, EH550	LT550-E	SK178001-EB		0.157
EH700	LT700-E	SK178001-FB		0.168
EH800	LT800-E	SK178001-GB		0.182
EK110, EK150	LT150-EK	SK178001-HB		0.182
EK175, EK210	LT210-EK	SK178001-KB		0.139
EK370, EK550	LT550-EK	SK178001-LB		0.190
EK1000	LT1000-EK	SK178001-MB		0.200

Terminal extensions

Ordering details

Mounting on contactors	Dimensions		Type	Order code	Pkg qty	Weight (1 pce) kg
	hole Ø mm	bar mm				
EH145 ... EH210	11	20 x 5	LX210	SK879902-C		0.150
EH260 ... EH550	11	25 x 6	LX550	SK879902-D		0.300
EH700	11	40 x 6	LX700	SK879902-E		0.700

Terminal enlargements

Ordering details

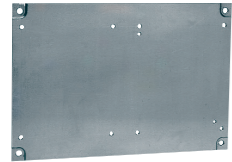
Mounting on contactors	Dimensions		Type	Order code	Pkg qty	Weight (1 pce) kg
	hole Ø mm	bar mm				
EH145 ... 210	11	20 x 5	LW210	SK879901-C		0.300

Terminal connecting strips

Ordering details

For contactor	Type	Order code	Pkg qty	Weight (1 pce) kg
EH210	LY210	26310243-6		0.100
EH260	LY300	26310243-4		0.200
EH370	LY550	26310243-5		0.250
EH500				

Classic products



PN ...

1SFC086663F0302

Mounting plates

Ordering details

To use with left hand contactor	Mecha	Right hand contactor	Type	Order code	Pkg qty	Weight (1 pce) kg
---------------------------------	-------	----------------------	------	------------	---------	-------------------

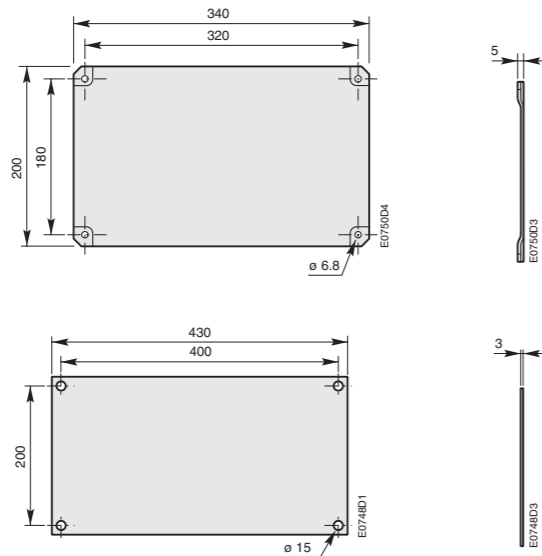
Plates for two horizontal mounted contactors with or without a mechanical interlock unit and/or thermal overload relay

EH175, EH210	VH250A	EH145	PN210-22	SK829075-C		1.400
EH175, EH210	VH300	EH175, EH210				
EK110, EK150	VH45	EK175, EK210				
EH260, EH300	VH300	EH175, EH210	PN300-22	SK829075-E		2.070
EH260, EH300	VH300	EH260, EH300				
EK175, EK210	VH300	EK175, EK210				

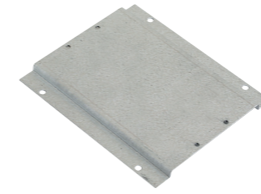
Plates for two horizontal mounted contactors with or without a mechanical interlock unit and/or thermal overload relay

EH370, EH550	-	EH370, EH550	PN550-21	21750297-5		4.100
EH700, EH800	-	EH700, EH800	PN800-22	21750297-6		5.000
EH370, EH550	-	EH370, EH550				

Main dimensions mm

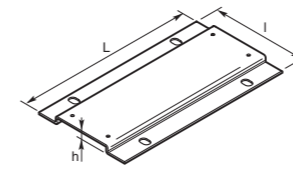


Classic products



PR300-1

1SFT18001-015C3



E21180

Adapter plates

Description

Adapter plates with fixing holes for specified old contactors to new contactors.

Ordering details

From old contactor	To new contactor	Type	Order code	Pkg qty	Weight (1 pce) kg
EH65, EH75, EH80, EH90, EG80	A95, A110	PR110-1	1SFN094500R1000	1	0.270
EH100, EH145	A110, A145	PR145-1	1SFN094700R1000	1	0.360
EH150, EH160, EH175, EH210, EG160	A185, A210	PR210-1	1SFN094900R1000	1	0.440
EH250, EH260, EH300	A210...A300	PR300-1	1SFN095300R1000	1	0.560
EH370, EH550, EG315	AF400...AF580	PR460-1	1SFN095700R1000	1	0.900
EH700, EH800	AF750	PR750-1	1SFN096100R1000	1	0.500
EH550, EG630	AF580, AF750	PR750-2	1SFN096100R1001	1	1.100

Note: The adapter plates provided for the A ... contactors can also be used for the AF ... contactors.

Dimensions (mm)

Type of the plate	Dimensions			Fixing holes
	L	l	h	
PR110-1	151	106	11.2	2 x $\varnothing 7$
PR145-1	180	122	11.5	4 x $\varnothing 7$
PR210-1	200	132	11.5	4 x $\varnothing 7$
PR300-1	200	172	11.5	4 x $\varnothing 7$
PR460-1	278	198	11.5	4 x $\varnothing 7$
PR750-1	283	244	11.5	4 x $\varnothing 7$

Note: The adapter plates provided for the A ... contactors can also be used for the AF ... contactors. Fixing holes according to the plate types

Mechanical and electrical interlocking units

Ordering details

For contactors	Type	Order code	Pkg qty	Weight (1 pce) kg
----------------	------	------------	---------	-------------------

on left on right

Mechanical interlock units of two horizontal mounted contactors

EH370, EH550	EH260 ... EH550	VH550	SK829070-E	1	5.000
EHDB520 ... EHDB650	EHDB520 ... EHDB650				
EH700, EH800	EH370 ... EH800	VH800	SK829070-F	1	6.000
EH370, EH550	EK370, EK550				
EHDB800, EHDB960	EHDB800, EHDB960				
EH145	EH145	VH145W	SK829070-B	1	2.300
EH175, EH210	EH175, EH210	VH210W	SK829070-C	1	2.400
EH260, EH300	EH260, EH300	VH300W	SK829070-D	1	2.800

Mechanical and electrical interlock units of two horizontal mounted contactors

EH175, EH210	EK175, EK210	VH300	SK829071-B	1	0.130
EHDB220 ... EHDB360	EHDB220 ... EHDB360				

Mechanical interlock units of two horizontal mounted contactors

EK370 ... EK1000	EK370 ... EK1000	VH800	SK829070-F		6.00
------------------	------------------	-------	------------	--	------

Mechanical and electrical interlock units of two vertical mounted contactors

EK110, EK150	EK110, EK150	VKV150	SK829072-B		0.250
EH260, EH300	EH260, EH300	VHV300	SK829072-D		0.430
EK175, EK210	EK175, EK210				
EK175, EK210	EH145	VHV210A	SK829072-F		0.220
EH145	EH145	VHV145	SK829072-A		0.430
EK175, EK210	EH260, EH300	VHV210	SK829072-C		0.600

Mechanical latching units

Ordering details

For contactor type	Type	Order code	Pkg qty	Weight (1 pce) kg
--------------------	------	------------	---------	-------------------

Mechanical latching units, righthand side contactor

EH175, EH210	WH210R-X	SK829062-□□		1.070
EH260, EH300	WH300R-X	SK829063-□□		1.090
EH370, EH550	WH550R-X	SK829064-□□		2.300
EH700, EH800	WH800R-X	SK829065-□□		2.400

Mechanical latching units, lefthand side contactor

EH175, EH210	WH210 L-X	SK829082-□□		1.070
EH260, EH300	WH300 L-X	SK829083-□□		1.090
EH370, EH550	WH550 L-X	SK829084-□□		2.300
EH700, EH800	WH800 L-X	SK829055-□□		2.400

Coil voltage codes

Contactor types	Standard voltages		Code	
	V (50 Hz)	V (60 Hz)	□	□
EH175...EH800 EK110...EK550	-	110	A	E
	110	120	A	F
	-	208	A	Z
	190	220	A	H
	-	240	A	K
	220-230	- ¹⁾	A	L
	230-240	-	A	M
	380-400	440	A	P
	400-415	-	A	R
	-	480	A	S
	440	-	A	T

¹⁾Read 240 V for EH370...EH800 and EK370...EK550

Contactor types	V d.c.	Code
	24	D B
EH370...EH1200	110	D E
EK110...EK550	125	D U ²⁾
	220	D F ²⁾

²⁾ N/A for EH1200

Contactor coils

Ordering details

For contactor type	Type	Order code	Pkg qty	Weight (1 pce) kg
--------------------	------	------------	---------	-------------------

A.C. or D.C. operated coils for EH and EK contactors

EH175, EH210	KH210	SK825400-□□		0.360
EK110, EK150				
EHDB220, EHDB280				
EH300	KH250	SK825100-□□		0.440
EH260, EH300	KH300	SK826400-□□		0.440
EK175, EK210				
EHDB300				
EK370, EK550	KH550	SK827100-□□		0.780
EHDB250, EHDB650				
EH700, EH800	KH800	SK828100-□□		0.950
EK370, EK550				
EGDB800, EHDB960				
EK1200	KH1200	SK828101-□□		

Sets including a D.C. coil, an economy resistor and an inertion contact

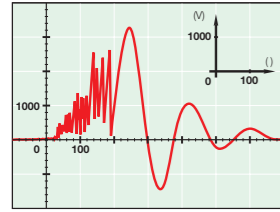
EH175, EH210	KP210	SK825450-□□		0.360
EK110, EK150				
EH260, EH300	KP300	SK826450-□□		0.440
EK175, EK210				
EH370, EH550	KP550	SK827150-□□		0.780
EH700 ... EH800	KP800	SK828150-□□		0.950

Sets including a multi-frequency coil and an nsertion contact for contactor with built-in rectifier

EH175, EH210	KP210	SK825450-E □		0.300
EK110, EK150				
EH260, EH300	KP300	SK826450-E □		0.400
EK175, EK210				

a.c. and d.c. operated coils for the mechanical latching units on EH145 ... EH800 contactors

D.C. operated	KX800X	SK829100-□□		0.090
---------------	--------	-------------	--	-------



Surge suppressors for contactor coils

Description

The operation of inductive circuits causes overvoltages, in particular on opening of the contactor coil. The electromagnetic energy stored in the coil during contactor closing is restored on opening in the form of surges, the slope and amplitude of which may rise to several kilovolts. A number of drawbacks are observed ranging from interference on the electronic devices to breakdown of insulators and even destruction of certain sensitive components. The graph opposite reproduces the oscillogram showing voltage discharges at the terminals of a 42 V / 50 Hz coil without peak clipping. The coil was switched by 8 series-connected poles of a contactor relay. Following a burst of discharges with a very steep slope a damped oscillation emerges with a peak value of 3500 V.

Overvoltage Factor

The overvoltage factor k is defined as the ratio of the maximum overvoltage peak value \hat{U}_s to the peak value \hat{U}_c of the coil rated control voltage U_c :

$$k = \frac{\hat{U}_s \text{ max.}}{\hat{U}_c} \quad \text{in DC: } k = \frac{\hat{U}_s \text{ max.}}{U_c} \quad \text{or in AC: } k = \frac{\hat{U}_s \text{ max.}}{U_c \sqrt{2}}$$

For example the following is obtained for the above graph: $k = \frac{3500}{42 \sqrt{2}} \approx 60$

To reduce the harmful effects of these overvoltages, ABB has developed a range of surge suppressors designed to reduce the k factor defined above and to limit or even completely eliminate the high pre-damping voltage frequencies.

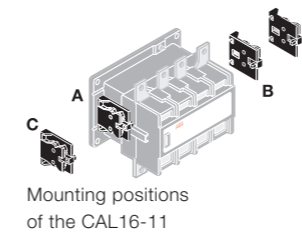
Each case is different, but the technical data tolerances and the generous sizing of parts have enabled us to reduce the number of variants.

We have chosen the following solutions: transil diodes, varistors and RC blocks.

Note: A varistor is a resistor whose value decreases to a very large extent when a certain voltage is applied at its terminals.

Ordering details

For contactors	Rated control circuit voltage U_c		Type	Order code	Pkg qty	Weight (1 pce) kg
	V	AC DC				
EH175 ... EH300, EK100 ... EK210	24...48	● -	RC-EH300/48	SK829007-A	2	0.015
	110...415	● -	RC-EH300/416	SK829007-B		
EHDB130 ... EHDB360	110...415	- ●	RC-EH300/415	SK829007-B		0.015
EH370 ... EH800, EK370 ... EK550	48...100	● -	RC-EH800/110	SK829007-C	2	0.015
EHDB520 ... EHDB960		- ●				
EH175 ... EH800, EK110 ... EK550	24...125	- ●			2	0.015
EH370 ... EH800, EK370 ... EK1000	220...600	● -	RC-EH800/600	SK829007-D		
EHDB520 ... EHDB960		- ●				



Auxiliary contact blocks

Description

The auxiliary contact blocks are used for the operation of auxiliary circuits and control circuits.

Types of auxiliary contact blocks for standard industrial environments:

- CAL instantaneous with N.O. + N.C. contacts
- CCL N.O. leading contact + N.C. lagging contact.

The auxiliary contact blocks are equipped with screw type connecting terminals delivered open, protected against accidental direct contact, and bear the corresponding function marking. Mounting: Screwed onto the right and / or lefthand side of the EK110 ... EK1000 contactors.

Ordering details

For contactors	Number of blocks	Auxiliary contacts	Type	Order code	Pkg qty	Weight (1 pce) kg
EK, EHDB	1	1 1 - -	CAL16-11A	SK829002-A	1	0.050
EK, EHDB	1	1 1 - -	CAL16-11B	SK829002-B	1	0.050
EK, EHDB	1	1 1 - -	CAL16-11C	SK829002-C	1	0.050
EK, EHDB	1	1 1 - -	CAL16-11D	SK829002-D	1	0.050
EK	1	1 - - 1	CCL16-11E (1)	SK829002-E	1	0.050

(1) Mounting of CCL16-11E blocks does not allow an additional second block to be added on top of it. All DC operated EK... contactors are equipped with one CCL16-11E on the right side.

R contactors

R contactors

Spare parts for main poles

Contact sets	2/2
Arcing horns	2/2
Equipotential connections	2/3
Arc chutes	2/3

Spare parts for control circuits

Surge suppressors	2/4
Rectifiers	2/4
Magnet circuits	2/4

Spare parts for auxiliary contact

Auxiliary contact blocks CA12	2/5
Auxiliary contacts CA15	2/5
Mounting kits	2/5

Spare parts for main poles

2

Contact sets for main poles with arcing horn

Description

The contact sets include 1 fixed contact, 1 moving contact, 1 arcing horn (except for ratings ≥ 800 A) and screws.

The quantities needed are defined per ratings as follow:

1 set per pole for 63...800, 1000, 1400, 1700, 2100 A

2 sets per pole for 1250, 1500, 2500, 3200, 3800 A

3 sets per pole for 2000, 4500, 5100 A

4 sets per pole for 3150, 5800 A

5 sets per pole for 4000 A

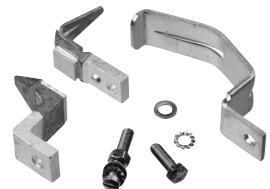
Ordering details

For R contactors type

IOR, NOR, JOR and FOR

For R contactors type	Order code	Pkg qty	Weight (1 pce)
IOR, NOR, JOR and FOR			kg
63, 85 A	FPTN410389R0001	1 set	0.050
125, 170 A	FPTN410389R0002	1 set	0.150
200, 260 A	FPTN410389R0003	1 set	0.250
315, 420 A	FPTN410389R0004	1 set	0.400
500, 550 A	FPTN410389R0005	1 set	0.480
800, 1000, 1250, 1500, 2000, 3150, 4000 A 1)	FPTN410391R0001	1 set	0.520
1400, 2500 A 1)	FPTN410503R0001	1 set	0.520
1700, 2100, 380, 4500, 5100, 5800 A1)	FPTN410506R0001	1 set	0.830

1) Arcing horn must be ordered separately



1SBC388134F0302NB

Contact sets for main poles without arcing horn

Description

The contact sets include 1 fixed contact, 1 moving contact and screws.

Ordering details

For R contactors type

LOR (1)

For R contactors type	Order code	Pkg qty	Weight (1 pce)
LOR (1)			kg
63, 85 A	FPTN410390R0001	1 set	0.040
125, 170 A	FPTN410390R0002	1 set	0.090
200, 260 A	FPTN410390R0003	1 set	0.180
315, 420 A	FPTN410390R0004	1 set	0.250
500, 550 A	FPTN410390R0005	1 set	0.470
800, 1000, 1250, 1500, 2000, 3150, 4000 A	FPTN410391R0001	1 set	0.520
1400, 2500 A	FPTN410503R0001	1 set	0.520
1700, 2100, 380, 4500, 5100, 5800 A	FPTN410506R0001	1 set	0.830

(1) And for R contactors type IOR, NOR, JOR and FOR with contacts in parallel (1250 A, 1500 A, 2000 A, 3150 A, 4000 A)



1SBC388134F0302NB2

Arcing horns

Description

Arcing horns must be ordered separately for ratings ≥ 800 A

Ordering details

For R contactors type

IOR, NOR, JOR and FOR

For R contactors type	Order code	Pkg qty	Weight (1 pce)
IOR, NOR, JOR and FOR			kg
800, 1000, 1250, 1500, 2000, 3150, 4000 A	FPTN410446R0001	1	0.200
1400, 2500 A	FPTN410446R0001	1	0.200
1700, 2100, 3800, 4500, 5100, 5800 A	FPTN410508R0001	1	0.280



1SBC104033F0014

Spare parts for main poles

2

Equipotential connections

Description

Equipotential connections must be ordered separately for ratings ≥ 800 A

Ordering details

For R contactors type	Type	Order code	Pkg qty	Weight (1 pce)
IOR, NOR, JOR and FOR				kg
800 ... 5800 A	NO poles	FPTN410176R0006		0.500
800 ... 4000 A	NC poles	FPTN410176R0007		0.530



1SBC104032F0014

Arc chutes

Description

De-ion arc chutes replace basic arc chutes except for 315 and 420 A ratings.

Ordering details

For R contactors type	Type	Order code	Pkg qty	Weight (1 pce)
IOR, NOR, JOR and FOR				kg
63, 85 A	De-ion arc chute	FPTN401938R0002		0.470
125, 170 A	De-ion arc chute	FPTN401939R0002		0.930
200, 260 A	De-ion arc chute	FPTN401940R0002		1.360
315, 420 A	Basic arc chute	FPTN401936R0002		1.300
400, 500, 550 A	De-ion arc chute	FPTN401941R0002		3.600
800, 100, 1250, 1500, 2000, 3150, 4000 A	De-ion arc chute	FPTN410067R0002		2.570
1400, 2500 A	De-ion arc chute	FPTN410067R0002		2.570
1700, 2100, 3800, 4500, 5100, 5800 A	De-ion arc chute	FPTN410507R0001		3.150



1SBC387943F0302

Pressure springs, insulated supports, complete poles and other spare parts

Please contact your local sales organisation (order code for R contactor needed).

Spare parts for control circuits

Spare parts for auxiliary contacts

Surge suppressors for contactor coils

Ordering details

For R contactors type IOR, NOR, JOR, LOR and FOR	Rated control circuit voltage Uc		Type	Order code	Pkg qty	Weight (1 pce) kg
	V	AC DC				
63 ... 5800 A	24...60	● -	RV-R1/60	FPTN410463R6001	1	0.050
	60...133	● -	RV-R1/133	FPTN410463R6002	1	0.050
	110...250	● -	RV-R1/250	FPTN410463R6003	1	0.050
	250...440	● -	RV-R1/440	FPTN410463R6004	1	0.050
	24...90	- ●	RV-R1/60	FPTN410463R6001	1	0.050
	60...180	- ●	RV-R1/133	FPTN410463R6002	1	0.050
	110...320	- ●	RV-R1/250	FPTN410463R6003	1	0.050
	250...550	- ●	RV-R1/440	FPTN410463R6004	1	0.050

Rectifiers

Ordering details

For R contactors type IORR, NORR, JORR, LORR and FORR	Rated control circuit voltage Uc	Order code	Pkg qty	Weight (1 pce) kg
	≥ 440 V AC	TRE2720801	1	0.050

Complete control circuit kit

Including:

- 1 coil
- 1 economy resistor
- 1 surge suppressor
- 1 rectifier

For complete kit, please contact your local sales organization (order code of R contactor needed)

Magnet circuits

Ordering details

For R contactors type IOR, NOR, JOR, LOR, and FOR	Order code	Pkg qty	Weight (1 pce) kg
63, 85 A	FPTN410437R0001	1	1.500
125, 170 A	FPTN410438R0001	1	1.500
200, 260 A	FPTN410439R0001	1	1.500
400 ... 550 A	FPTN410441R0001	1	2.500
≥ 800 A	FPTN410200R0001	1	8.000

For tripping electro-magnet circuit AME or AM(F)-CC > 800 A: use 63, 85 A electro-magnet circuit.

For IOR and AMA versions, please consult your local sales organization (order code of R contactor needed)

Coils, economy resistors and other specific parts

Please contact your local sales organization (order code of R contactor needed).

Auxiliary contact blocks type CA12

Description

CA12 auxiliary contact blocks 2- or 4-pole are mounted on a support bracket, above the electro-magnet.

The R contactors type R and RE can be equipped with:

- 1 or 2 x 2-pole blocks
- 1 x 2-pole block + 1 x 4-pole blocks.

The R contactors type RR can be equipped with 1 or 2 x 2-pole blocks.

Ordering details

For R contactors type R, RE, RR (RC excluded)	Auxiliary contacts		Type	Order code	Pkg qty	Weight (1 pce) kg
	1	2				
63...550 A	1	1	CA12-1	FPTN410004R0001	1	0.050
	2	0	CA12-2	FPTN410005R0001	1	0.050
	2	2	CA12-11	FPTN410013R0001	1	0.090
	1	3	CA12-12	FPTN410016R0001	1	0.090
	4	0	CA12-22	FPTN410012R0001	1	0.090

Support bracket

63 ... 260 A	Support bracket	FPTN410056R0001	1	0.060
315 ... 550 A	Support bracket	FPTN410056R0002	1	0.060

Auxiliary contacts type CA15

Description

CA15 auxiliary contacts are mounted on a mounting kit, on the frame.

Ordering details

For R contactors type R, RE, RR, RC	Auxiliary contacts		Type	Order code	Pkg qty	Weight (1 pce) kg
	1	2				
	1	0	CA15-F	FPTN410008R0004	1	0.070
	0	1	CA15-O	FPTN410007R0006	1	0.070

Auxiliary contact with screw terminals

63 ... 5800 A	1	0	CA15-F	FPTN410008R0004	1	0.070
	0	1	CA15-O	FPTN410007R0006	1	0.070

Auxiliary contact for railway

63 ... 5800 A	1	0	CA15-F	FPTN210382R0003	1	0.070
	0	1	CA15-O	FPTN210382R0004	1	0.070

Mounting kit

63 ... 170 A						
315 ... 550 A			universal mounting kit	FPTN410054R0016	1	
Auxiliary frame ≥ 800 A			Mounting kit	FPTN410054R0017	1	
200 ... 260 A			Mounting kit	FPTN410213R0006	1	
Main frame ≥ 800 A			Mounting kit	FPTN410213R0006	1	

For special auxiliary contact blocks: please contact your local sales organization (order code of R contactor needed).

Softstarters type PSE, PSS, PST and PSTB

HMI module	3/2
Printed circuit board	3/2
Cooling fan	3/2
Thyristors	3/3
Thyristors	3/4
Kit for changing thyristors	3/5
Semiconductor fuses and holders type Busmann	3/6
Current transformers	3/7
Bypass relay and contactor	3/8
USB-cable for SoftstarterCare	3/8
Display	3/8
Keypad	3/8

HMI-module

Ordering details

For softstarter type	Pcs/ unit	Type	Order code	Pkg qty	Weight (1 pce) kg
PSE18 ... PSE105	1	PSEHMI-1	1SFA899219R7001	1	0.560
PSE142 ... PSE170	1	PSEHMI-2	1SFA899219R7002	1	0.560
PSE210 ... PSE370	1	PSEHMI-3	1SFA899219R7003	1	0.560
PST30... PST300	1	PSHMI-1	1SFA899019R7001	1	1.000
PSTB370 ... PSTB1050	1	PSHMI-2	1SFA899019R7002	1	1.000
PST30-T ... PST300-T	1	PSHMI-1-T	1SFA899019R7021	1	1.000
PSTB370-T ... PSTB1050-T	1	PSHMI-2-T	1SFA899019R7022	1	1.000

Printed circuit board

Ordering details

For softstarter type	Type	Order code	Pkg qty	Weight (1 pce) kg
PSS18 ... PSS300 ¹⁾	Main PCB230 ... 500 V	PSPCB-500/S	1SFA899020R1500	0.370
PSS18...PSS300-C ²⁾	Main PCB230 ... 500 V	PSPCB-500C/S	1SFA899020R2500	0.370
PSS18 ... PSS300 ¹⁾	Main PCB380 ... 690 V	PSPCB-690/S	1SFA899020R1690	0.470
PSS18...PSS300-C ²⁾	Main PCB380 ... 690 V	PSPCB-690C/S	1SFA899020R2690	0.470
PST30 ... PST300	LV board	PSPCB-LV/T	1SFA899020R7000	0.360
PSTB370 ... PSTB1050				
PST30-T ... PST300-T	LV board	PSPCB-LV/T-T	1SFA899020R7020	0.360
PSTB370-T ... PSTB1050-T				
PST30 ... PST300	HV board	PSPCB-690/T	1SFA899020R7690	0.190
PSTB370 ... PSTB1050				
PST30-T ... PST300-T	HV board	PSPCB-690/T-T	1SFA899020R7691	0.190
PSTB370-T ... PSTB1050-T				

1) Printed circuit board with fault signal contact normally open (N.O.)
 2) Printed circuit board with fault signal contact normally closed (N.C.)

Cooling fan

Ordering details

For softstarter type	Main Voltage (V)	Pcs/ unit	Type	Order code	Pkg qty	Weight (1 pce) kg
PSE18 ... PSE105		2	PSFA-40	1SFA899215R1040		0.025
PSE142 ... PSE170		2	PSFA-60	1SFA899215R1060		0.055
PSE210 ... PSE370		2	PSFA-80	1SFA899215R1080		0.070
PSS18 ... PSS44	500 V	1	PSFA-12	1SFA899015R1012		0.020
PSS50 ... PSS72	500 V	2	PSFA-12	1SFA899015R1012		0.020
PSS18 ... PSS44	690 V	2	PSFA-12	1SFA899015R1012		0.020
PSS85 ... PSS142	500/690 V	2	PSFA-115	1SFA899015R1115		0.250
PSS175 ... PSS300	500/690 V	4	PSFA-115	1SFA899015R1115		0.250
PST30 ... PST72	500/690 V	2	PSFA-024	1SFA899015R7024		0.020
PST85 ... PST142	500/690 V	2	PSFA-224	1SFA899015R7224		0.020
PST175 ... PST300	500/690 V	4	PSFA-224	1SFA899015R7224		0.020
PSTB370... PSTB1050	500/690 V	3	PSFA-224	1SFA899015R7224		0.020

For softstarters type PSE

Ordering details

For softstarter type	Pcs/ unit	Type	Order code	Pkg qty	Weight (1 pce) kg
PSE18	2	PSTHM-26/16	1SFA899210R1026	1	0.090
PSE25	2	PSTHM-26/16	1SFA899210R1026	1	0.090
PSE30	2	PSTHM-44/16	1SFA899210R1044	1	0.090
PSE37	2	PSTHM-44/16	1SFA899210R1044	1	0.090
PSE45	2	PSTHM-56/16	1SFA899210R1056	1	0.090
PSE60	2	PSTHM-95/16	1SFA899210R1095	1	0.090
PSE72	2	PSTHM-95/16	1SFA899210R1095	1	0.090
PSE85	2	PSTHM-132/16	1SFA899210R1132	1	0.125
PSE105	2	PSTHM-162/16	1SFA899210R1162	1	0.125
PSE142	2	PSTHM-162/16	1SFA899210R1162	1	0.125
PSE170	2	PSTHM-200/16	1SFA899210R1200	1	0.125
PSE210	2	PSTHM-312/16	1SFA899210R1312	1	0.750
PSE250	2	PSTHM-501/16	1SFA899210R1501	1	1.500
PSE300	2	PSTHM-501/16	1SFA899210R1501	1	1.500
PSE370	2	PSTHM-501/16	1SFA899210R1501	1	1.500

For softstarters type PSS

Ordering details

For softstarter type	Main Voltage (V)	Pcs/ unit	Type	Order code	Pkg qty	Weight (1 pce) kg
PSS18	<= 600 V	3	PSTM-27/16	1SFA899010R1027	1	0.100
PSS30	<= 600 V	3	PSTM-42/16	1SFA899010R1042	1	0.100
PSS37	<= 600 V	3	PSTM-57/16	1SFA899010R1057	1	0.100
PSS44	<= 600 V	3	PSTM-92/16	1SFA899010R1092	1	0.100
PSS50	<= 600 V	3	PSTM-92/16	1SFA899010R1092	1	0.100
PSS60	<= 600 V	3	PSTM-132/16	1SFA899010R1132	1	0.250
PSS72	<= 600 V	3	PSTM-172/16	1SFA899010R1172	1	0.250
PSS85	<= 600 V	3	PSTM-172/16	1SFA899010R1172	1	0.250
PSS105	<= 600 V	3	PSTM-210/16	1SFA899010R1210	1	0.940
PSS142	<= 600 V	3	PSTM-250/16	1SFA899010R1250	1	0.940
PSS175	<= 600 V	3	PSTM-250/16	1SFA899010R1250	1	0.940
PSS250	<= 600 V	3	PSTM-500/16	1SFA899010R1500	1	1.420
PSS300	<= 600 V	3	PSTM-500/16	1SFA899010R1500	1	1.420
PSS18	<= 690 V	3	PSTM-27/18	1SFA899011R1027	1	0.100
PSS30	<= 690 V	3	PSTM-42/18	1SFA899011R1042	1	0.100
PSS37	<= 690 V	3	PSTM-57/18	1SFA899011R1057	1	0.100
PSS44	<= 690 V	3	PSTM-92/18	1SFA899011R1092	1	0.100
PSS50	<= 690 V	3	PSTM-92/18	1SFA899011R1092	1	0.100
PSS60	<= 690 V	3	PSTM-132/18	1SFA899011R1132	1	0.250
PSS72	<= 690 V	3	PSTM-172/18	1SFA899011R1172	1	0.250
PSS85	<= 690 V	3	PSTM-172/18	1SFA899011R1172	1	0.250
PSS105	<= 690 V	3	PSTM-210/18	1SFA899011R1210	1	0.940
PSS142	<= 690 V	3	PSTM-250/18	1SFA899011R1250	1	0.940
PSS175	<= 690 V	3	PSTM-250/18	1SFA899011R1250	1	0.940
PSS250	<= 690 V	3	PSTM-500/18	1SFA899011R1500	1	1.420
PSS300	<= 690 V	3	PSTM-500/18	1SFA899011R1500	1	1.420

For softstarters type PST

Ordering details

For softstarter type	Main Voltage (V)	Pcs/unit	Type	Order code	Pkg qty	Weight (1 pce) kg
PST30	<= 600 V	3	PSTM-42/16	1SFA899010R1042		0.100
PST37	<= 600 V	3	PSTM-57/16	1SFA899010R1057		0.100
PST44	<= 600 V	3	PSTM-92/16	1SFA899010R1092		0.100
PST50	<= 600 V	3	PSTM-92/16	1SFA899010R1092		0.100
PST60	<= 600 V	3	PSTM-132/16	1SFA899010R1132		0.250
PST72	<= 600 V	3	PSTM-172/16	1SFA899010R1172		0.250
PST85	<= 600 V	3	PSTM-172/16	1SFA899010R1172		0.250
PST105	<= 600 V	3	PSTM-210/16	1SFA899010R1210		0.940
PST142	<= 600 V	3	PSTM-250/16	1SFA899010R1250		0.940
PST175	<= 600 V	3	PSTM-250/16	1SFA899010R1250		0.940
PST210	<= 600 V	3	PSTM-330/16	1SFA899010R1330		0.750
PST250	<= 600 V	3	PSTM-500/16	1SFA899010R1500		1.420
PST300	<= 600 V	3	PSTM-500/16	1SFA899010R1500		1.420
PST30	<= 690 V	3	PSTM-42/18	1SFA899011R1042		0.100
PST37	<= 690 V	3	PSTM-57/18	1SFA899011R1057		0.100
PST44	<= 690 V	3	PSTM-92/18	1SFA899011R1092		0.100
PST50	<= 690 V	3	PSTM-92/18	1SFA899011R1092		0.100
PST60	<= 690 V	3	PSTM-132/18	1SFA899011R1132		0.250
PST72	<= 690 V	3	PSTM-172/18	1SFA899011R1172		0.250
PST85	<= 690 V	3	PSTM-172/18	1SFA899011R1172		0.250
PST105	<= 690 V	3	PSTM-210/18	1SFA899011R1210		0.940
PST142	<= 690 V	3	PSTM-250/18	1SFA899011R1250		0.940
PST175	<= 690 V	3	PSTM-250/18	1SFA899011R1250		0.940
PST210	<= 690 V	3	PSTM-330/18	1SFA899011R1330		0.750
PST250	<= 690 V	3	PSTM-500/18	1SFA899011R1500		1.420
PST300	<= 690 V	3	PSTM-500/18	1SFA899011R1500		1.420

Thyristors for softstarters type PSTB

Ordering details

For softstarter type	Main Voltage (V)	Pcs/unit	Type	Order code	Pkg qty	Weight (1 pce) kg
PSTB370	<= 600 V	6	PSTP-280/16	1SFA899008R1280		0.090
PSTB470	<= 600 V	6	PSTP-370/16	1SFA899008R1370		0.340
PSTB570	<= 600 V	6	PSTP-370/16	1SFA899008R1370		0.340
PSTB720	<= 600 V	6	PSTP-540/16	1SFA899008R1540		0.510
PSTB840	<= 600 V	6	PSTP-600/16	1SFA899008R1600		0.510
PSTB1050	<= 600 V	6	PSTP-990/16	1SFA899008R1990		1.000
PSTB370	<= 690 V	6	PSTP-280/18	1SFA899009R1280		0.090
PSTB470	<= 690 V	6	PSTP-370/18	1SFA899009R1370		0.340
PSTB570	<= 690 V	6	PSTP-370/18	1SFA899009R1370		0.340
PSTB720	<= 690 V	6	PSTP-540/18	1SFA899009R1540		0.510
PSTB840	<= 690 V	6	PSTP-760/18	1SFA899009R1760		1.000
PSTB1050	<= 690 V	6	PSTP-1400/18	1SFA899009R2400		1.700

Kit for changing thyristors for softstarters type PSE, PSS, PST and PSTB

Ordering details

For softstarter type	Remark	Type	Order code	Pkg qty	Weight (1 pce) kg
PSE18...370	Sufficient for replacing 10 thyristor blocks	PSPB-1	1SFA899012R1001		0.050
PSS18...300	Sufficient for replacing 10 thyristor blocks	PSPB-1	1SFA899012R1001		0.05
PST30...300	Sufficient for replacing 10 thyristor blocks	PSPB-1	1SFA899012R1001		0.050
PSTB370...1050	Sufficient for replacing 20 thyristor disc	PSPB-2	1SFA899012R1002		0.050

Semiconductor fuses and holders type Bussmann

Current transformers

For softstarters type PSS, PST and PSTB

Ordering details

Softstarter		Fuses				Bussmann		Holder	Pkg qty	Weight (1 pce)
Type	Main Voltage (V)	Pcs/soft-starter unit	Rating current A	Type	Order code	Type	Type		kg	
PSS18	500/690	3	50	PSFU-50	1SFA899005R1364	170M1364	1		0.140	
PSS30	500/690	3	80	PSFU-80	1SFA899005R1366	170M1366	1		0.140	
PSS37	500/690	3	125	PSFU-125	1SFA899005R1368	170M1368	1		0.140	
PSS44	500/690	3	160	PSFU-160	1SFA899005R1369	170M1369	1		0.140	
PSS50	500/690	3	160	PSFU-160	1SFA899005R1369	170M1369	1		0.140	
PSS60	500/690	3	200	PSFU-200	1SFA899005R1370	170M1370	1		0.140	
PSS72	500/690	3	250	PSFU-250	1SFA899005R1371	170M1371	1		0.140	
PSS85	500/690	3	315	PSFU-315	1SFA899005R1372	170M1372	1		0.140	
PSS105	500/690	3	400	PSFU-400	1SFA899005R3019	170M3019	2		0.300	
PSS142	500/690	3	450	PSFU-450	1SFA899005R3020	170M3020	2		0.300	
PSS175	500/690	3	500	PSFU-500	1SFA899005R3021	170M3021	2		0.300	
PSS250	500/690	3	700	PSFU-700	1SFA899005R5013	170M5013	2		0.600	
PSS300	500/690	3	900	PSFU-900	1SFA899005R5015	170M5015	2		0.600	
PST30	600/690	3	80	PSFU-80	1SFA899005R1366	170M1366	1		0.140	
PST37	600/690	3	125	PSFU-125	1SFA899005R1368	170M1368	1		0.140	
PST44	600/690	3	160	PSFU-160	1SFA899005R1369	170M1369	1		0.140	
PST50	600/690	3	160	PSFU-160	1SFA899005R1369	170M1369	1		0.140	
PST60	600/690	3	200	PSFU-200	1SFA899005R1370	170M1370	1		0.140	
PST72	600/690	3	250	PSFU-250	1SFA899005R1371	170M1371	1		0.140	
PST85	600/690	3	315	PSFU-315	1SFA899005R1372	170M1372	1		0.140	
PST105	600/690	3	400	PSFU-400	1SFA899005R3019	170M3019	2		0.140	
PST142	600/690	3	450	PSFU-450	1SFA899005R3020	170M3020	2		0.300	
PST175	600/690	3	500	PSFU-500	1SFA899005R3021	170M3021	2		0.300	
PST210	600/690	3	630	PSFU-630	1SFA899005R5012	170M5012	2		0.300	
PST250	600/690	3	700	PSFU-700	1SFA899005R5013	170M5013	2		0.600	
PST300	600/690	3	900	PSFU-900	1SFA899005R5015	170M5015	2		0.600	
PSTB370	600/690	3	700	PSFU-700	1SFA899005R5013	170M5013	2		0.600	
PSTB470	600/690	3	900	PSFU-900	1SFA899005R5015	170M5015	2		0.600	
PSTB570	600/690	3	900	PSFU-900	1SFA899005R5015	170M5015	2		0.600	
PSTB720	600/690	3	1250	PSFU-1250	1SFA899005R5018	170M5018	2		0.600	
PSTB840	600/690	3	1500	PSFU-1500	1SFA899005R6018	170M6018	2		0.830	
PSTB1050	600	3	1800	PSFU-1800	1SFA899005R6020	170M6020	2		0.830	
PSTB1050	690	3	1600	PSFU1600	1SFA899005R6019	170M6019	2		0.830	

Holders

Ordering details

Holders type	Pcs / softstarter unit	Type	Order code	Bussmann type	Pkg qty	Weight (1 pce) kg
1	3	PSFH-1	1SFA899006R1007	170H1007		0.240
2	3	PSRH-2	1SFA899006R3004	170H3004		1.420

For softstarters type PSS, PST and PSTB

Ordering details

For softstarter type	Current transf. pcs / softstarter unit	Ratio	Type	Order code	Pkg qty	Weight (1 pce) kg
PSS18	1	30/1	PSCT-30	1SFA 899001R1030		0.200
PSS30	1	40/1	PSCT-40	1SFA 899001R1040		0.200
PSS37	1	50/1	PSCT-50	1SFA 899001R1050		0.200
PSS44	1	60/1	PSCT-60	1SFA 899001R1060		0.200
PSS50	1	75/1	PSCT-75	1SFA 899001R1075		0.200
PSS60	1	75/1	PSCT-75	1SFA 899001R1075		0.200
PSS72	1	100/1	PSCT-100	1SFA 899001R1100		0.150
PSS85	1	125/1	PSCT-125	1SFA 899001R1125		0.150
PSS105	1	150/1	PSCT-150	1SFA 899001R1150		0.150
PSS142	1	200/1	PSCT-200	1SFA 899001R1200		0.250
PSS175	1	250/1	PSCT-250	1SFA 899001R1250		0.250
PSS250	1	400/1	PSCT-400	1SFA 899001R1400		0.200
PSS300	1	400/1	PSCT-400	1SFA 899001R1400		0.200
PST30	3	30/1	PSCT-30	1SFA 899001R1030		0.200
PST37	3	40/1	PSCT-40	1SFA 899001R1040		0.200
PST44	3	50/1	PSCT-50	1SFA 899001R1050		0.200
PST50	3	50/1	PSCT-50	1SFA 899001R1050		0.200
PST60	3	60/1	PSCT-60	1SFA 899001R1060		0.200
PST72	3	75/1	PSCT-75	1SFA 899001R1075		0.200
PST85	3	100/1	PSCT-100	1SFA 899001R1100		0.150
PST105	3	125/1	PSCT-125	1SFA 899001R1125		0.150
PST142	3	150/1	PSCT-150	1SFA 899001R1150		0.150
PST175	3	200/1	PSCT-200	1SFA 899001R1200		0.250
PST210	3	250/1	PSCT-250	1SFA 899001R1250		0.250
PST250	3	250/1	PSCT-250	1SFA 899001R1250		0.250
PST300	3	300/1	PSCT-300	1SFA 899001R1300		0.300
PSTB370	3	400/1	PSCT-400	1SFA 899001R1400		0.200
PSTB470	3	500/1	PSCT-500	1SFA 899001R1500		0.300
PSTB570	3	600/1	PSCT-600	1SFA 899001R1600		0.300
PSTB720	3	750/1	PSCT-750	1SFA 899001R1750		0.300
PSTB840	3	1000/1	PSCT-1000	1SFA 899001R2000		0.300
PSTB1050	3	1200/1	PSCT-1200	1SFA 899001R2200		0.300

Other accessories for softstarter type PSE, PST and PSTB

Bypass relay and contactor

Ordering details

For softstarter type	Pcs/ unit	Type	Order code	Pkg qty	Weight (1 pce) kg
PSE18 ... PSE105	1	PSBP-120	1SFA899201R1120	2	0.170
PSE142 ... PSE170	2	PSBP-200	1SFA899201R1200	1	0.330
PSE210 ... PSE370	1	AF110-30-00	1SFL457001R7000	1	2.100

USB-cable for SoftstarterCare

Ordering details

For softstarter type	Pcs/ unit	Type	Order code	Pkg qty	Weight (1 pce) kg
PSE18 ... PSE370	1	PSECA	1SFA897201R1001	1	0.130

Display

Ordering details

For softstarter type	Pcs/ unit	Type	Order code	Pkg qty	Weight (1 pce) kg
PST30 ... PST300 PSTB370 ... PSTB1050	1	PSDP-1	1SFA899017R1000	1	0.040

Keypad

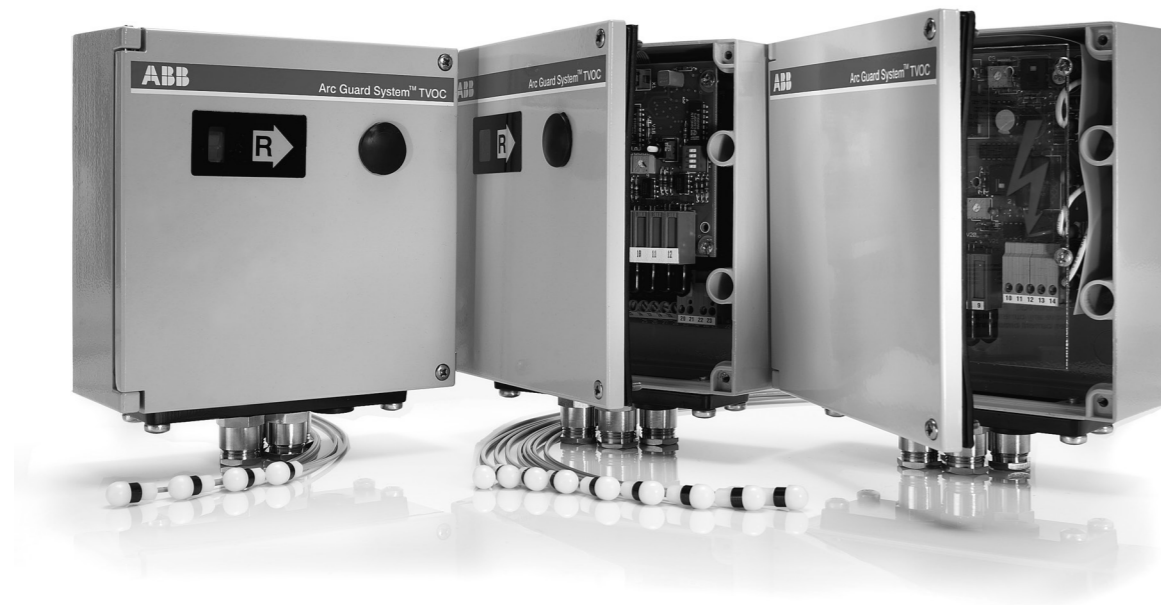
Ordering details

For softstarter type	Pcs/ unit	Type	Order code	Pkg qty	Weight (1 pce) kg
PST30 ... PST300 PSTB370 ... PSTB1050	1	PSKP-1	1SFA899018R1000	1	0.010

Contents

Arc guard system TVOC

Arc monitor	4/2
Detector	4/2
Optical cable	4/3
Mounting bracket	4/3
Mounting kit	4/3
Label	4/3
Flush mounting set	4/3
Current transformers	4/3



Arc monitor Detectors

Arc monitor

Ordering details

For power supply voltage	Type	Order code	Pkg qty	Weight (1 pce) kg
60...220 V, DC or 60...240 V, 50/60 Hz		1SFA663001R1001		1.680
24...48 V, DC		1SFA663001R1002		1.680

Arc monitor - simplified version

For power supply voltage	Type	Order code	Pkg qty	Weight (1 pce) kg
60...220 V, DC or 60...240 V, 50/60 Hz		1SFA663001R1003		
24...48 V, DC		1SFA663001R1004		

Detectors with optical cable of plastic fibre

Ordering details

Cable length	Order code	Pkg qty	Weight (1 pce) kg
1 m	1SFA663003R1010		0.020
2 m	1SFA663003R1020		0.020
4 m	1SFA663003R1040		0.040
6 m	1SFA663003R1060		0.060
8 m	1SFA663003R1080		0.080
10 m	1SFA663003R1100		0.100
15 m	1SFA663003R1150		0.150
20 m	1SFA663003R1200		0.200
25 m	1SFA663003R1250		0.200
30 m	1SFA663003R1300		0.300
other lengths on request			

Accessories

Optical cables

Ordering details

Cable length	Order code	Pkg qty	Weight (1 pce) kg
0.5 m	1SFA663004R1000		0.010
1 m	1SFA663004R1010		0.010
2 m	1SFA663004R1020		0.020
4 m	1SFA663004R1040		0.040
6 m	1SFA663004R1060		0.060
8 m	1SFA663004R1080		0.080
10 m	1SFA663004R1100		0.100
15 m	1SFA663004R1150		0.150
20 m	1SFA663004R1200		0.200
25 m	1SFA663004R1250		0.250
30 m	1SFA663004R1300		0.300

Mounting bracket set

Ordering details

	Order code	Pkg qty	Weight (1 pce) kg
One set including 5 pcs of bracket and 10 pcs if cable strap	1SFA663006R1010		0.250

Mounting kit

600 mm	1SFA663006R1001		0.350
800/1000 mm	1SFA663006R1002		0.600

Label

One set including 10 pcs	1SFA663005R1001		0.020
--------------------------	-----------------	--	-------

Flush mounting set

Consisting of mounting bracket, gasket and screws	1SFA663006R1015		0.530
---	-----------------	--	-------

Contact us

ABB AB

Low Voltage Products

Control Products

SE-721 61 VÄSTERÅS, Sweden

ABB France

Low Voltage Products Division

3, rue Jean Perrin

F-69687 Chassieu cedex, France

www.abb.com/lowvoltage

Note

We reserve the right to make technical changes or modify the contents of this document without prior notice. With regard to purchase orders, the agreed particulars shall prevail. ABB does not accept any responsibility whatsoever for potential errors or possible lack of information in this document.

We reserve all rights in this document and in the subject matter and illustrations contained therein. Any reproduction, disclosure to third parties or utilization of its contents - in whole or in parts - is forbidden without prior written consent of ABB.

Copyright© 2013 ABB
All rights reserved