



Wireless Modular Tower Light

Monitor where you couldn't before: Effectively manage your factory visually without the cost of wiring.

- **Save money and time** – eliminate costly and time-consuming wire runs
- Scalable **all-in-one solution** with two-way wireless communication and visual status indication
- **Improve productivity** with a clear, easy-to-read signal tower light
- Use in harsh environments with rugged, water-resistant IP65 housing with UV-stabilized material
- Segments appear gray when off to **eliminate false indication** from ambient light





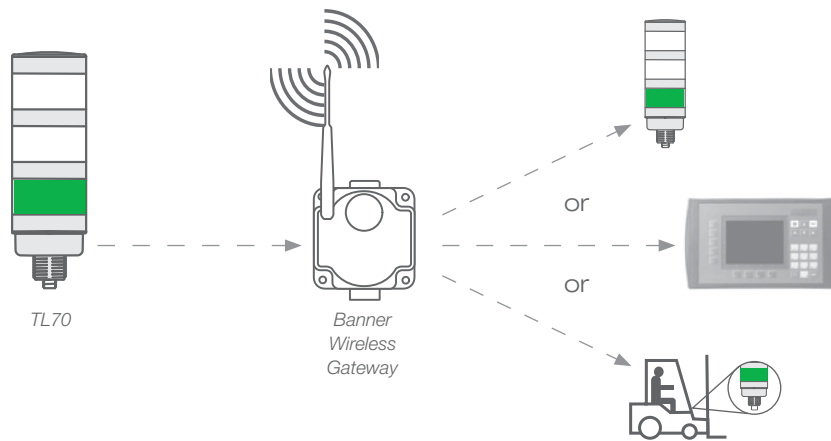
TL70 Wireless Modular Tower Light

Eliminate the Cost of Wiring

Remote status monitoring without lengthy and expensive cable runs.

1-Way Communication

The TL70 relays machine status to a remote device



TL70 Wireless Tower Light

- A TL70 emulates machine status and transmits updates over a wireless network
- A remote TL70 indicator receives the updates and displays the appropriate status, enabling remote monitoring without requiring any cable runs



PLC or HMI

- Machine status updates are transmitted by the TL70 over a secure wireless network
- Status updates are received by the device, triggering an action or prompting a response from an operator at a workstation away from the machine

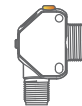
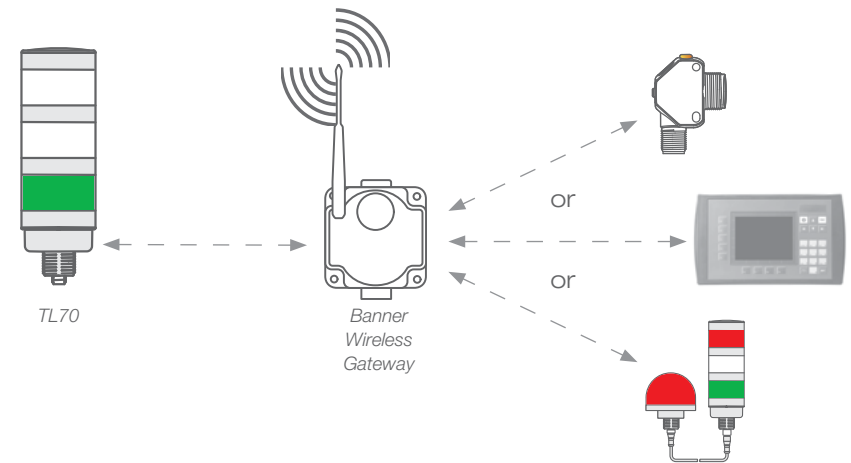


Mobile Equipment

- Status updates are communicated over a robust wireless network
- A device installed on mobile equipment receives updates from the TL70
- Operators can respond quickly to changing conditions from the mobile equipment

2-Way Communication

The TL70 relays a status to a remote device
AND receives input from a remote device



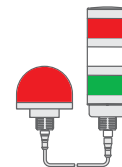
Machine or Sensor Input

- Status updates are transmitted to the TL70 indicator
- The TL70 receives the updates and displays the appropriate status, providing at-a-glance status information



PLC or HMI

- Conditions are communicated by the TL70 to a device
- A response from the device is transmitted back to the TL70 indicator
- The TL70 displays the updated status, providing an easy-to-see acknowledgement of any action



Personnel Input

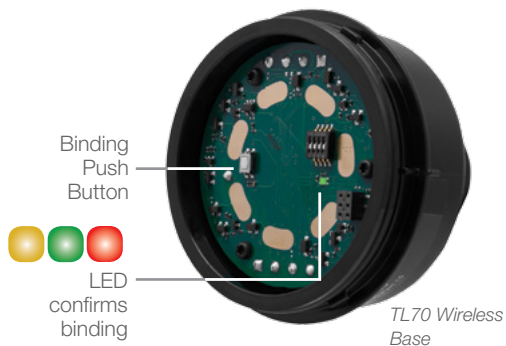
- A change in status initiated by an operator is transmitted over the wireless network
- An operator at the receiving device acknowledges the status update
- The updated status is displayed by both TL70s, enabling visual communication between stations

The Easiest Tower Light to Install

The TL70 tower light design is user friendly with just a few easy steps to complete installation.

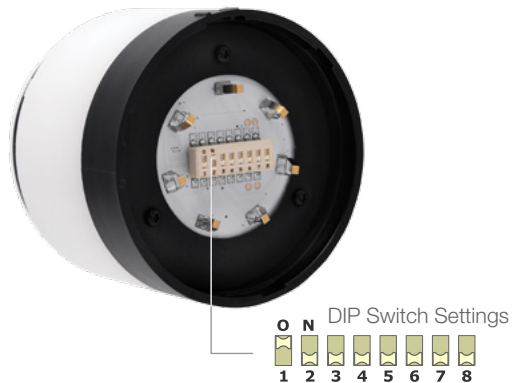
1. Bind Base to Gateway

- Enter binding mode on TL70 with simple push button
- Scalable up to 47 Nodes per Gateway
- Easy-access dials to assign Node(s) address



2. Build Light Segments

- Assign module position (switches 1-6)
- Assign flash rate or audible tone (switches 7-8)



- Align segment markings
- Press together
- Twist to lock



3. Map Base to Gateway

- Universal configuration tool license-free software
- Assign I/O





TL70 Wireless Modular Tower Light

Order Preassembled

Housing	Radio Band	Color/Position					Audible Alarm	Housing Color	Connection
TL70	DXN2	1	2	3	4	5			Q
	DXN2 = Node 2.4 GHz <i>Requires 2.4 GHz Gateway</i>						Blank = None A = Audible	Blank = Black C = Gray	
	DXN9 = Node 900 MHz <i>Requires 900 MHz Gateway</i>							Blank = 2 m Integral Cable T = Terminal Wired Q = Euro Integral QD QP = Euro Pigtail QD <i>QD models require mating cordset</i>	
			G = Green Y = Yellow R = Red B = Blue W = White						

Order Components to Build your Own

Base (1) and Light Segments (2)

Housing	Radio Band	Connection	Housing Color
1 B-TL70	DXN2	Q5	
Base Segment		5 = 2 m, 5-wire Integral Cable 8 = 2 m, 8-wire Integral Cable T = Terminal	Blank = Black C = Gray
	DXN2 = Node 2.4 GHz <i>Requires 2.4 GHz Gateway</i>	Q5 = 5-pin Euro Integral QD (1-4 modules) Q8 = 8-pin Euro Integral QD (5-6 modules)	
	DXN9 = Node 900 MHz <i>Requires 900 MHz Gateway</i>	QP5 = 5-pin Euro Pigtail QD (1-4 modules) QP8 = 8-pin Euro Pigtail QD (5-6 modules) <i>QD models require mating cordset</i>	

PM Gateways (10-30 V dc)

Models	Description	Frequency
DX80G9M6S-PM2	4 Discrete in, 4 Discrete out	900 MHz
DX80G2M6S-PM2	2 Analog in, 2 Analog out	2.4 GHz
DX80G9M6S-PM8	6 Discrete in, 6 Discrete out	900 MHz
DX80G2M6S-PM8		2.4 GHz

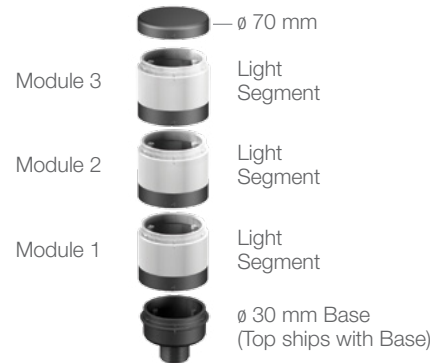
Gateway Pros (10-30 V dc)

DX80P9T6S-P	Modbus/TCP to EtherNet/IP Converter	900 MHz
DX80P2T6S-P		2.4 GHz
DX80P9A6S-P		900 MHz
DX80P2A6S-P		2.4 GHz

MultiHop Modbus (FlexPower*)

DX80DR9M-H	Serial interface: user selectable between RS-485 or RS-232	900 MHz
DX80DR2M-H		2.4 GHz

*FlexPower® power options allow for 10 – 30 V DC, solar, and battery power sources for low power applications



Supply Voltage	12 to 30 V dc
Construction	Bases, Covers and Light Segments: Polycarbonate
Environmental Rating	IP65
Operating Temperature	-40 to +50 °C (-40 to +122 °F)
Certifications	Approvals pending

Housing	Color/Alarm	Housing Color
2 SG-TL70	R	
Light Segment	G = Green Y = Yellow R = Red B = Blue W = White A = Audible	Blank = Black C = Gray

Accessories

Cordsets	
5-Pin M12/ Euro-Style Cordsets* Straight connector models listed	MQDC1-506 2 m (6.5') MQDC1-515 5 m (15') MQDC1-530 9 m (30')
8-Pin M12/ Euro-Style Cordsets* Straight connector models listed.	MQDC2S-806 2 m (6.5') MQDC2S-815 5 m (15') MQDC2S-830 9 m (30')

* For right-angle models add RA to the end of model number (example, [MQDC1-506RA](#))

[SMBAMS30RA70](#)
Right-angle bracket



TL70 Wireless Modular Tower Light

Link to
data sheets

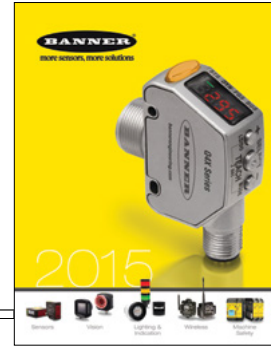
WLC90 Heavy Duty LED Light

Banner's WLC90 Heavy Duty Light are designed to operate in harsh environments and are built to last. They are constructed with rugged materials and are designed to withstand the most demanding industrial environments. They are available in a variety of models to meet your specific needs.

Model	Light Angle	Connection	Window
WLC90W100	10° Beam	Integral 4-Pin Euro QD Side Exit	None
WLC90W150	15° Beam	Integral 4-Pin Euro QD Side Exit	None
WLC90W200	20° Beam	Integral 4-Pin Euro QD Side Exit	None
WLC90W300	30° Beam	Integral 4-Pin Euro QD Side Exit	None
WLC90W450	45° Beam	Integral 4-Pin Euro QD Side Exit	None
WLC90W600	60° Beam	Integral 4-Pin Euro QD Side Exit	None
WLC90W900	90° Beam	Integral 4-Pin Euro QD Side Exit	None
WLC90W1800	180° Beam	Integral 4-Pin Euro QD Side Exit	None

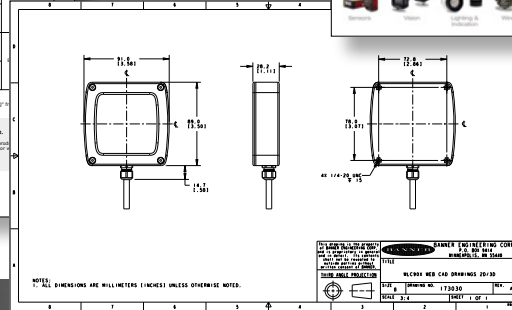
Notes:

- Model has three discrete intensity level settings.



Link to
catalog

Link to the
Banner website



Link to
CAD files



Talk with an app engineer. Get product specs. Order now.

1-888-373-6767 • bannerengineering.com

minneapolis, mn

