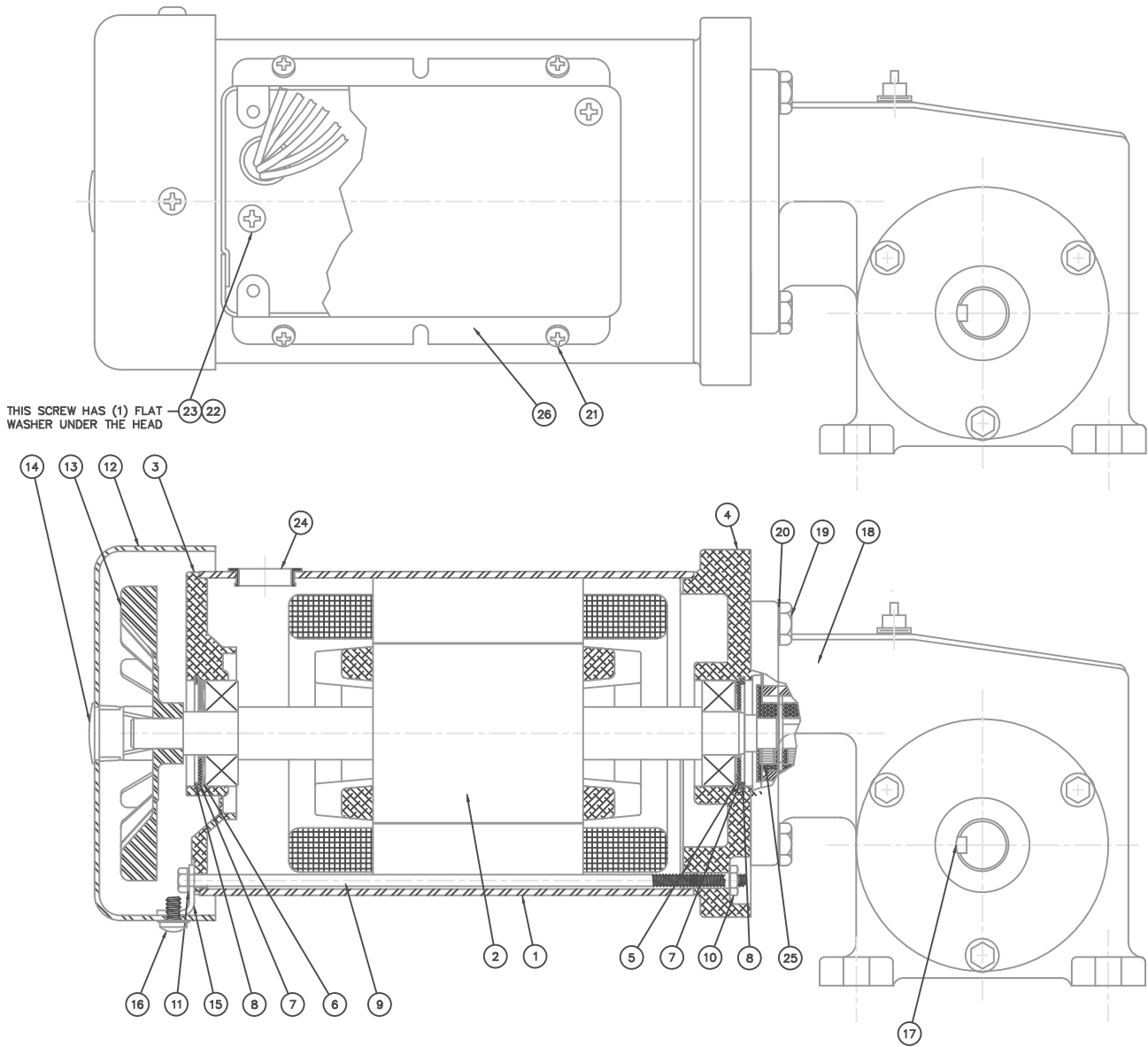
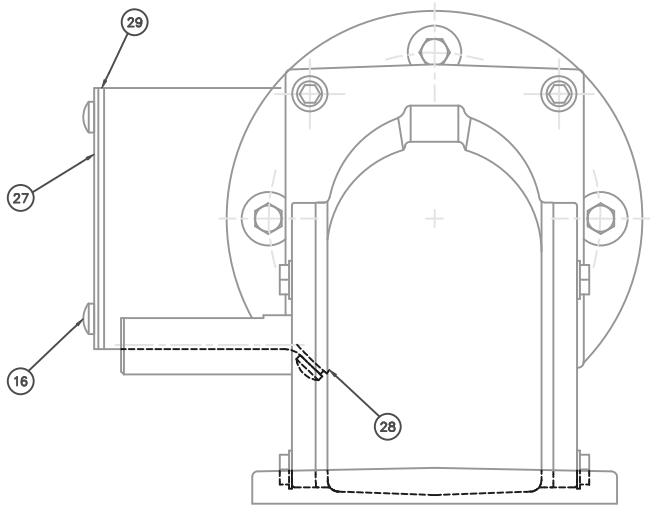


VIEW SHOWING CONDUIT BOX,  
AND GROUND SCREW LOCATION. ALL ARE  
ON SAME SIDE OF MOTOR AS GEARBOX SHAFT



29	CONDUIT BOX COVER GASKET
28	CONDUIT BOX GASKET
27	CONDUIT BOX COVER
26	CONDUIT BOX
25	LOCTITE #242
24	LEAD HOLE BUSHING
23	8-32 X .38 PP ZPG
22	FLAT WASHER
21	TFS 8-32 X .25 PP ZP
20	ITLW 1/4
19	1/4-20 X .75 H ZP
18	RT. ANGLE GEARBOX
17	KEY 3/16 X 1.00
16	TFS 8-32 X .38 PP P0
15	BRACKET
14	HOLE PLUG
13	FAN
12	FAN SHROUD
11	ITLW #6
10	HEX LOCK NUT
9	6-32 THRU-BOLT
8	RETAINING RING
7	WASHER COVER
6	LOAD SPRING
5	SHIM WASHER .030
4	ENDBELL MACHINED
3	ENDBELL MACHINED
2	ROTOR/SHAFT ASSEMBLY
1	FRAME/STATOR ASSEMBLY
ITEM	DESCRIPTION



CAUTION!  
PRIOR TO ASSEMBLY OF GEARBOX TO MOTOR A COUPLING  
HALF MUST BE ASSEMBLED TO MOTOR SHAFT WITH A SET  
SCREW AND LOC-TITE. PUSH COUPLING HALF TO SHOULDER  
ON SHAFT BEFORE TIGHTENING SET SCREW. PLACE DRIVE  
RING ON ONE HALF OF COUPLING AND THEN ASSEMBLE  
GEARBOX TO MOTOR.

				TOLERANCES UNLESS OTHERWISE SPECIFIED				LEESON ELECTRIC CORPORATION			
				DEC.	INCHES	METRIC		DRWN	KMM	08/12/01	TITLE
				.X	±.1	±2.5		APPR.	RDW	08/12/01	GENERAL ASSEMBLY
				.XX	±.01	±.25		SCALE	1=1		38 FR. AC GEARMOTOR
01	ADDED CONDUIT BOX	RDW 10/4/01	DWF	.XXX	±.005	±.127		REF.	PRO10338		MATL.
NO.	REVISION	BY & DATE	CHKD.	.XXX	±.0005	±.0127		SCALE	1=1		
				FRACTIONS	±1/64			REF.	PRO10338		FINISH
				ANGLES	±1/2°			FMF	M1140155		REV. 01
				THIS DRAWING IN DESIGN AND DETAIL IS OUR PROPERTY AND MUST NOT BE USED EXCEPT IN CONNECTION WITH OUR WORK. ALL RIGHTS OF DESIGN AND INVENTION ARE RESERVED. THIS IS AN ELECTRONICALLY GENERATED DOCUMENT - DO NOT SCALE THIS PRINT				M1040956			