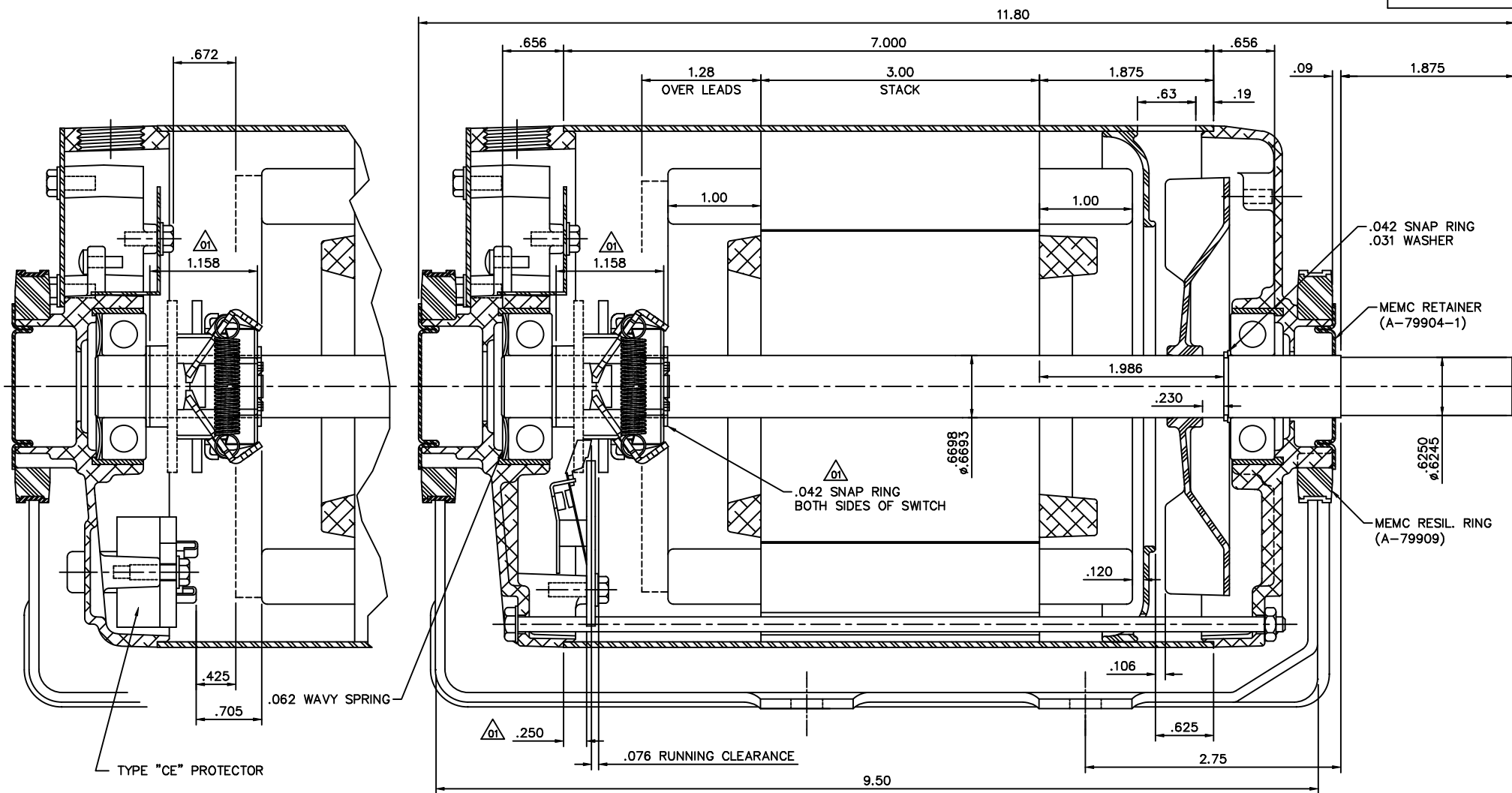


LO100046



				TOLERANCES UNLESS OTHERWISE SPECIFIED			LEESON ELECTRIC CORPORATION			
				DEC.	INCHES	METRIC	DRAWN	PG 7/26/01	TITLE	
01 SWITCH BOSS HEIGHT WAS .310, 1.158 CENT.				.X	±.1	±2.5	APPR.		LAYOUT - S56 FRAME	
SWITCH DIM. WAS 1.259, ADDED 2ND SNAP RING				.XX	±.01	±.25			DRIP PROOF - 1 PHASE - RESILIENT	
NO. REVISION				.XXX	±.005	±.127	R.F.P.		S.E. ENDBELL 020086	
BY & DATE				.XXXX	±.0005	±.0127	SCALE	1=1	L.E. ENDBELL 020093	
THIS DRAWING IN DESIGN AND DETAIL IS OUR PROPERTY AND MUST NOT BE USED EXCEPT IN CONNECTION WITH OUR WORK ALL RIGHTS OF DESIGN AND INVENTION ARE RESERVED THIS IS AN ELECTRONICALLY GENERATED DOCUMENT - DO NOT SCALE THIS PRINT				FRACTIONS	±1/64	REF.	FINISH		REV.	DRAWING NO.
				ANGLES	±1/2°	FMF			01	LO100046