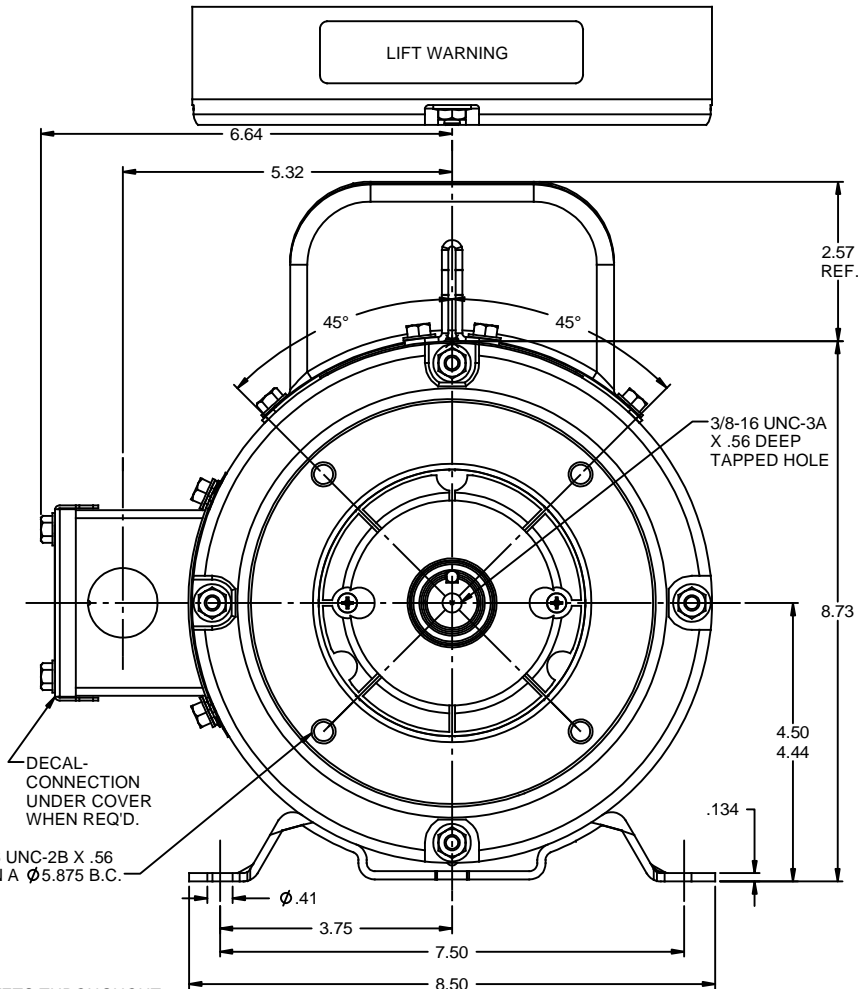
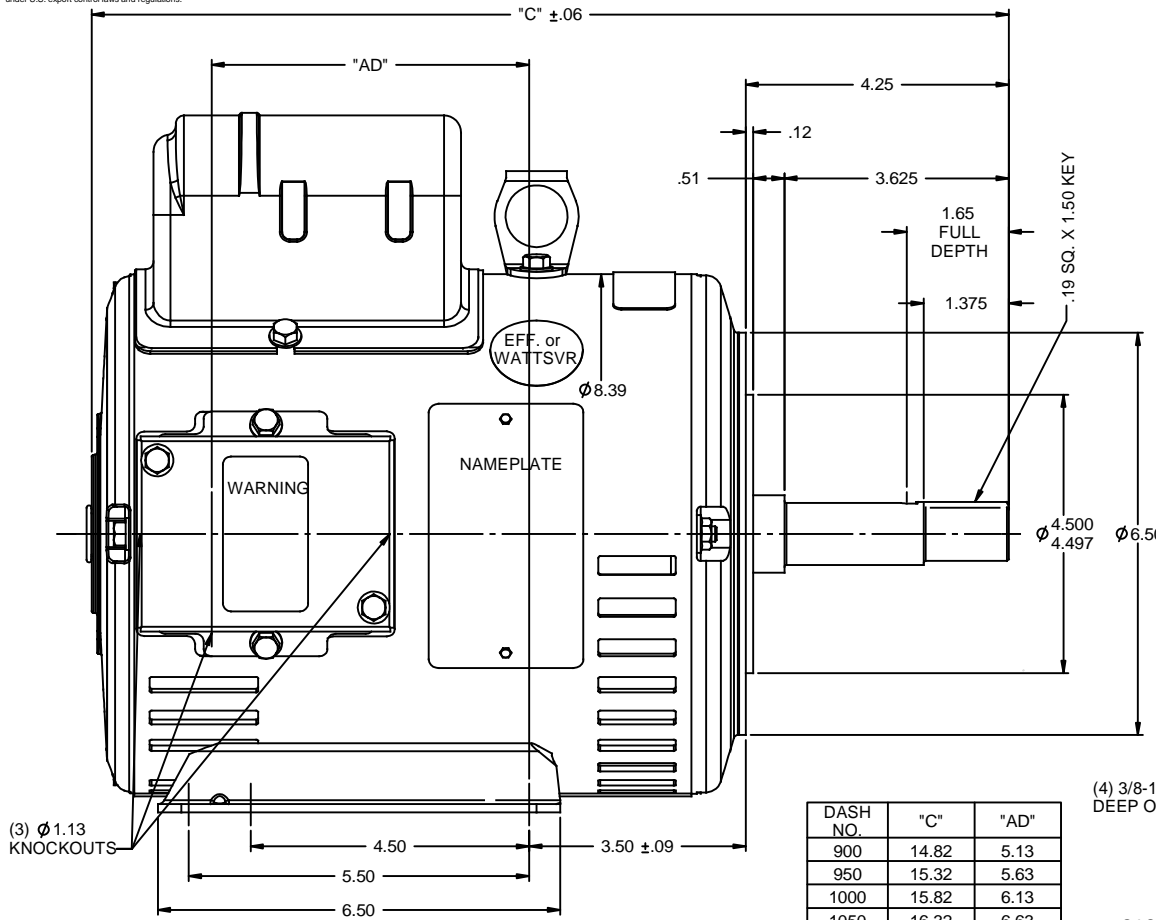


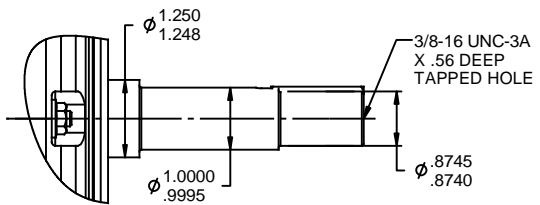
RBC PROPRIETARY AND CONFIDENTIAL INFORMATION  
 This document is the property of REGAL BELOIT CORPORATION ("RBC") including its subsidiaries and divisions and contains proprietary information of RBC. This document is loaned on the express condition that neither it nor the information contained therein shall be disclosed to others without the express written consent of RBC, and that the information shall be used by the recipient only as approved expressly by RBC. This document shall be returned to RBC upon its request. This document may be subject to certain restrictions under U.S. export control laws and regulations.



DASH NO.	"C"	"AD"
900	14.82	5.13
950	15.32	5.63
1000	15.82	6.13
1050	16.32	6.63
1100	16.82	7.13
1150	17.32	7.63
1200	17.82	8.13

(4) 3/8-16 UNC-2B X .56 DEEP ON A Ø 5.875 B.C.

GASKETS THROUGHOUT  
 MAXIMUM FACE RUNOUT TO BE .004 T.I.R.  
 MAXIMUM PILOT ECCENTRICITY TO BE .004 T.I.R.  
 PERMISSIBLE SHAFT RUNOUT TO BE .004 T.I.R.



SHAFT DETAIL

				TOLERANCES UNLESS SPECIFIED		DRAWN PG 11/10/97	
				DEC	INCHES	CHK	
				x	±.1	APPR PG 11/10/97	
				.xx	±.03	SCALE 1:2	
01	CHANGE SHAFT RUNOUT SPEC PER ISAAC 11-1521	LST 3/30/2011	XX	xxx	±.005	TITLE OUTLINE - 180JM FRAME	REF 035220
-	UPDATED & REDRAWN IN SOLIDWORKS	LST 12/18/2009	XX	xxxx	±.0005	MATL DRIP PROOF - JM PUMP MOUNT	FMF 131805
NO	REVISION	BY & DATE	CHK	ANG	±1/2°	FINISH	PAGE OF
			RFP			PREV	REV
				NETWORK FILE NAME 035390		SIZE B	DRAWING NO 035390