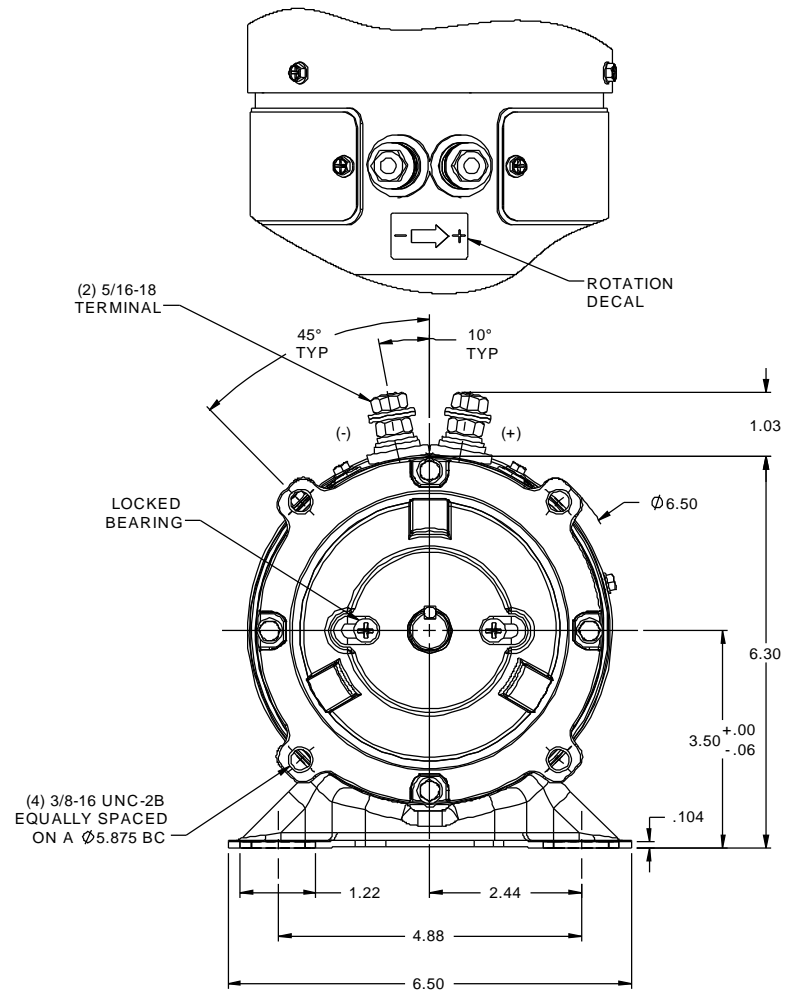
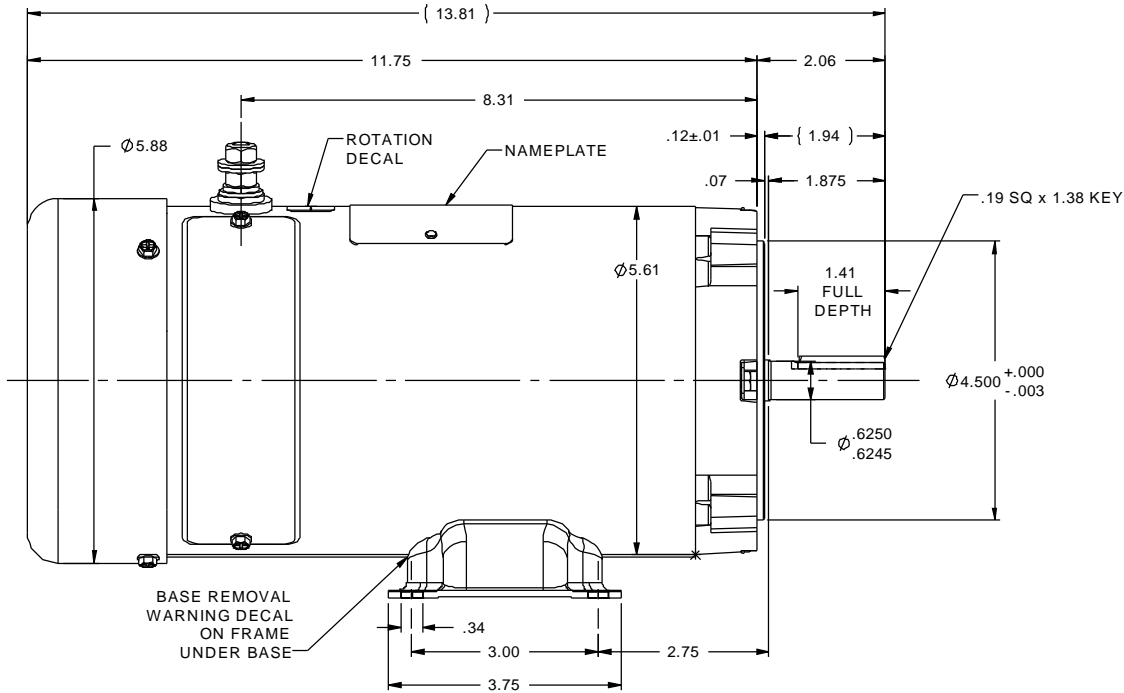


RBC PROPRIETARY AND CONFIDENTIAL INFORMATION  
 This document is the property of REGAL BELOIT CORPORATION ("RBC") including its subsidiaries and divisions and contains proprietary information of RBC. This document is loaned on the express condition that neither it nor the information contained therein shall be disclosed to others without the express written consent of RBC, and that the information shall be used by the recipient only as approved expressly by RBC. This document shall be returned to RBC upon its request. This document may be subject to certain restrictions under U.S. export control laws and regulations.



- NOTES:  
 1) MAXIMUM FACE RUNOUT .004 T.I.R.  
 2) MAXIMUM PILOT ECCENTRICITY .004 T.I.R.  
 3) PERMISSIBLE SHAFT RUNOUT .002 T.I.R.  
 4) GASKETS THROUGHOUT.

		TOLERANCES UNLESS SPECIFIED		LEESON		ELECTRIC MOTORS GEARMOTORS AND DRIVES		DRAWN JRA 5/16/95	
		DEC	INCHES					CHK	
		X	±.1					APPR	
		XX	±.03	TITLE OUTLINE				SCALE	1:2
		XXX	±.005	48 FRAME DC				REF	030747
05	REDRAWN IN SOLIDWORKS, ADDED DETAIL TOP VIEW	IPG	7/16/2013	XXXX	±.0005	MAT'L		FMF	
04	FIXED LOCATION OF FAN GUARD SCREWS, ECR 86533	KLS	10/19/04			FINISH		PAGE	OF
NO	REVISION	BY & DATE	CHK	ANG	±1/2°	PREV		SIZE	DRAWING NO
						RFP		B	031188
						NETWORK FILE NAME 031188			REV
									05

