



i500

Inverter i510-Cabinet.....

Use in UL approved systems

0.33 ... 3 hp

Mounting and switch-on instructions

This page intentionally left blank!

Contents

1 General information	4
1.1 Read first, then start	4
1.2 Notations and conventions	4
1.2.1 Product code	4
2 Safety instructions	5
2.1 Basic safety measures	5
2.2 Residual hazards	6
2.3 Application as directed	6
3 Product description	7
4 Mounting	8
4.1 Important notes	8
4.2 Mechanical installation	9
4.3 Electrical installation	12
4.3.1 Important notes	12
4.3.2 1-phase mains connection 230/240 V	13
4.3.2.1 Fusing and terminal data	15
4.3.3 1/3-phase mains connection 230/240 V	16
4.3.3.1 Fusing and terminal data	18
4.3.4 3-phase mains connection 480 V	19
4.3.4.1 Fusing and terminal data	21
4.3.5 CANopen/Modbus	22
5 Commissioning	23
5.1 Important notes	23
5.2 Before initial switch-on	23
5.3 Initial switch-on / functional test with terminal control	24
6 Technical data	26
6.1 Standards and operating conditions	26
6.2 1-phase mains connection 230/240 V	28
6.2.1 Rated data	28
6.3 1/3-phase mains connection 230/240 V	29
6.3.1 Rated data	29
6.4 3-phase mains connection 480 V	30
6.4.1 Rated data	30

1 General information

Read first, then start

1 General information

1.1 Read first, then start

WARNING!

Read this documentation thoroughly before carrying out the installation and commissioning.

- ▶ Please observe the safety instructions!



Information and tools with regard to the Lenze products can be found on the Internet:

<http://www.lenze.com> → Download

1.2 Notations and conventions

1.2.1 Product code

In tables, the first 9 digits of the corresponding product code are used to identify the products:

Example: Inverter i510 Cabinet, 1.5 kW, 3-phase, 400 V / 480 V IP20, integrated RFI filter, 50 Hz variant Basic-I/O with CANopen/Modbus network		Inverter code											
		I	5	1	A	E	215	F	1	0	0	1	0
Meaning													
Product type	Inverter	I											
Product family	i500	5											
Product	i510		1										
Product generation	Generation 1			A									
Mounting type	Control cabinet mounting				E								
Rated power [W] (Examples)	0.25 kW					125							
	0.55 kW					155							
	2.2 kW					222							
Mains voltage and connection type	1/N/PE AC 230/240 V							B					
	1/N/PE AC 230/240 V								D				
	2/PE AC 230/240 V												
	3/PE AC 230/240 V												
	3/PE AC 400 V 3/PE AC 480 V							F					
Motor connections	Single axis								1				
Integrated functional safety	Without									0			
Type of protection	IP20										0		
	IP20, coated										V		
Interference suppression	Without											0	
	Integrated RFI filter											1	
Design types	Global design 50 Hz											0	
	Local design 60 Hz											1	
	Basic-I/O without network											000	
	Basic-I/O with CANopen/Modbus											001	

2 Safety instructions

2.1 Basic safety measures

Disregarding the following basic safety measures may lead to severe personal injury and damage to material assets!

The product

- must only be used as directed.
- must never be commissioned if they display signs of damage.
- must never be technically modified.
- must never be commissioned if they are not fully mounted.
- must never be operated without required covers.

Connect/disconnect all pluggable terminals only in deenergised condition.

Only remove the product from the installation in the deenergised state.

Insulation resistance tests between 24V control potential and PE: According to EN 61800–5–1, the maximum test voltage must not exceed 110 V DC.

Observe all specifications of the corresponding documentation supplied. This is the precondition for safe and trouble-free operation and for obtaining the product features specified.

The procedural notes and circuit details described in this document are only proposals. It is up to the user to check whether they can be adapted to the particular applications. Lenze does not take any responsibility for the suitability of the procedures and circuit proposals described.

The product must only be used by qualified personnel. IEC 60364 or CENELEC HD 384 define the skills of these persons:

- They are familiar with installing, mounting, commissioning, and operating the product.
- They have the corresponding qualifications for their work.
- They know and can apply all regulations for the prevention of accidents, directives, and laws applicable at the place of use.

Observe the specific notes in the other chapters!





2.2 Residual hazards

The user must take the residual hazards mentioned into consideration in the risk assessment for his/her machine/system.

If the above is disregarded, this can lead to severe injuries to persons and damage to material assets!

Product

Observe the warning labels on the product!

Icon	Description
	Electrostatic sensitive devices: Before working on the inverter, the staff must ensure to be free of electrostatic charge!
	Dangerous electrical voltage Before working on the inverter, check whether all power connections are dead! After mains OFF, power connections X100 and X105 carry a dangerous electrical voltage for the time specified on the inverter!
	High leakage current: Carry out fixed installation and PE connection in compliance with EN 61800-5-1 or EN 60204-1 !
	Hot surface: Use personal protective equipment or wait until devices have cooled down!

Motor

If there is a short circuit of two power transistors, a residual movement of up to 180°/number of pole pairs can occur at the motor! (For 4-pole motor: residual movement max. $180^\circ/2 = 90^\circ$).

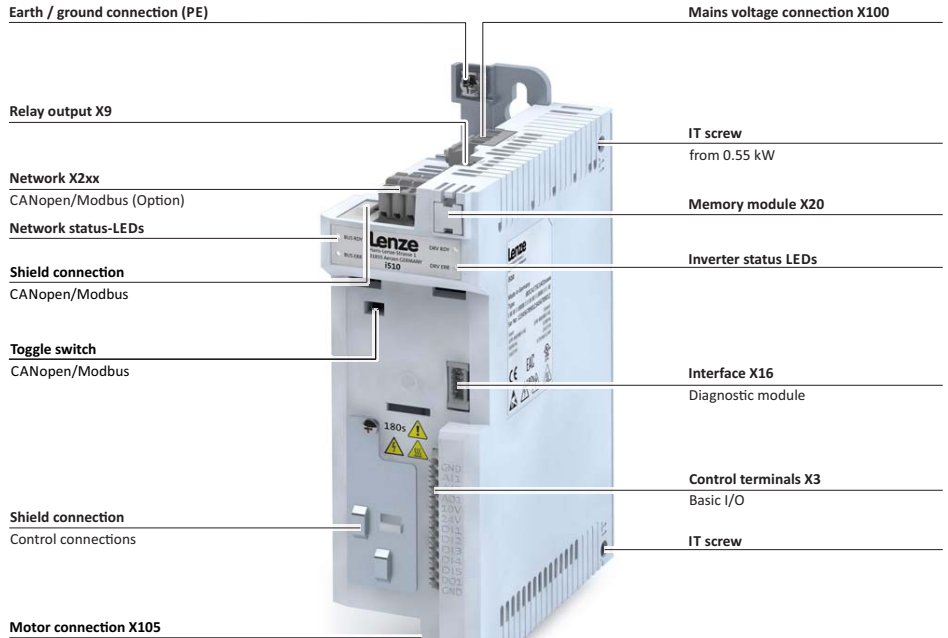
This residual movement must be taken into consideration by the user for his/her risk assessment.

2.3 Application as directed

- The product must only be operated under the operating conditions prescribed in this documentation.
- The product meets the protection requirements of 2014/35/EU: Low-Voltage Directive.
- The product is not a machine in terms of 2006/42/EC: Machinery Directive.
- Commissioning or starting the operation as directed of a machine with the product is not permitted until it has been ensured that the machine meets the regulations of the EC Directive 2006/42/EC: Machinery Directive; observe EN 60204-1.
- Commissioning or starting the operation as directed is only allowed when there is compliance with the EMC Directive 2014/30/EU.
- The harmonised standard EN 61800-5-1 is used for the inverters.
- The product is not a household appliance, but is only designed as component for commercial or professional use in terms of EN 61000-3-2.
- In accordance with EN 61800-3, the product can be used in drive systems that have to comply with the categories given in the technical data.

In residential areas, the product may cause EMC interferences. The operator is responsible for taking interference suppression measures.

3 Product description



4 Mounting

Important notes

4 Mounting

4.1 Important notes

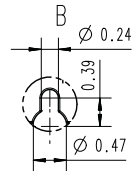
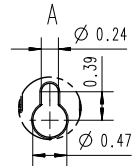
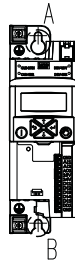
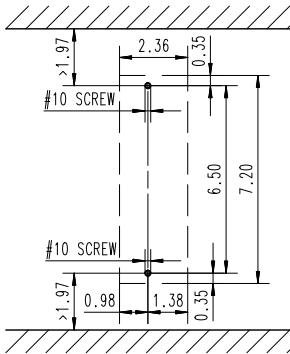
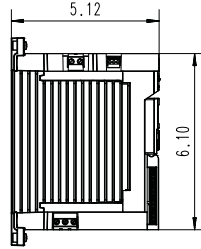
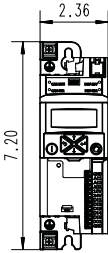
DANGER!

Dangerous electrical voltage

Possible consequence: death or severe injuries

- ▶ All work on the inverter must only be carried out in the deenergised state.
 - ▶ After switching off the mains voltage, wait for at least 3 minutes before you start working.
-

4.2 Mechanical installation
Dimensions I51AE 0.33 hp ... 0.5 hp

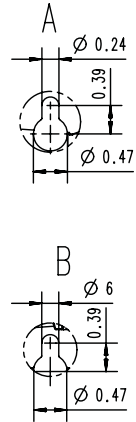
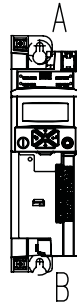
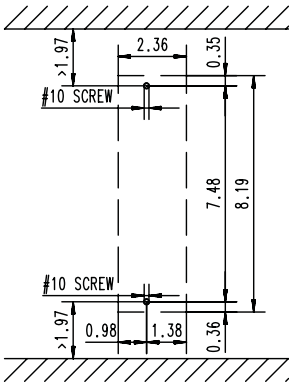
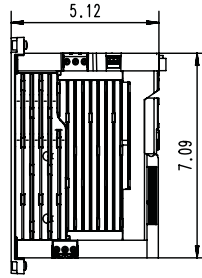
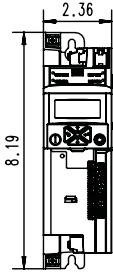


8800305

All dimensions in inches

4 **Mounting**
Mechanical installation

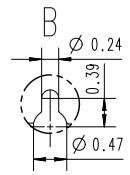
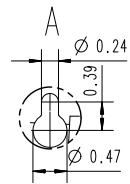
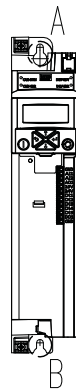
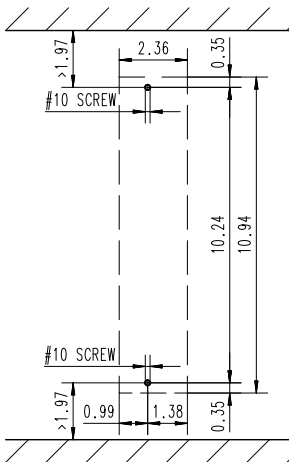
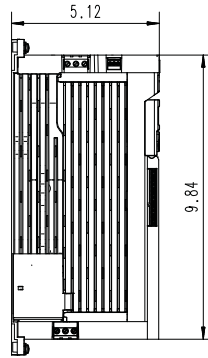
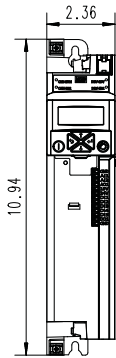
Dimensions I51AE 0.75 hp ... 1 hp



8800306

All dimensions in inches

Dimensions I51AE 1.5 hp ... 3 hp



8800307

All dimensions in inches

4 **Mounting**
Electrical installation
Important notes

4.3 **Electrical installation**

4.3.1 **Important notes**

 **WARNING!**

- ▶ The integral solid state short circuit protection included in the inverter does not provide branch circuit protection. Branch circuit protection must be provided in accordance with the National Electrical Code and any additional local codes.
 - ▶ -----
 - ▶ La protection statique intégrée contre les courts-circuits n'offre pas la même protection que le dispositif de protection du circuit de dérivation. Un tel dispositif doit être fourni, conformément au National Electrical Code et aux autres dispositions applicables au niveau local.
-

 **WARNING!**

- ▶ The inverter (PE) terminals connections must be connected to system earth / ground.
 - ▶ Earth / ground impedance must conform to the requirements of national and local industrial safety regulations and all applicable electrical codes.
 - ▶ The integrity of all earth / ground connections should be periodically checked.
 - ▶ -----
 - ▶ Les raccordements (PE) des bornes du variateur doivent être reliés à la terre.
 - ▶ L'impédance de terre doit être conforme aux exigences des réglementations nationales et locales en vigueur en matière de sécurité industrielle, ainsi qu'aux dispositions applicables en matière d'électricité.
 - ▶ Il convient de vérifier l'intégrité de toutes les liaisons à la masse à intervalles réguliers.
-

 **WARNING!**

- ▶ Use 75°C copper wire only, except for control circuits.
 - ▶ -----
 - ▶ Utiliser exclusivement des conducteurs en cuivre 75 °C, sauf pour la partie commande.
-

 **NOTICE!**

- ▶ Internal overload protection rated for 125 % of the rated FLA.
 - ▶ -----
 - ▶ Protection contre les surcharges conçue pour se déclencher à 125 % de l'intensité assignée à pleine charge.
-

4.3.2 1-phase mains connection 230/240 V

 **WARNING!**

- ▶ Suitable for use on a circuit capable of delivering not more than 5,000 rms symmetrical amperes, 240 V maximum.
 - ▶ When protected by fuses rated as given in tables below.
 - ▶ When protected by a circuit breaker having an interrupting rating not less than 5,000 rms symmetrical amperes, 240 V maximum rated as given in tables below.
 - ▶ -----
 - ▶ Convenient aux circuits non susceptibles de délivrer plus de 5.000 ampères symétriques eff., maximum 240 V.
 - ▶ Avec une protection par des fusibles du calibre indiqué dans les tableaux ci-dessous.
 - ▶ Avec protection par un disjoncteur à pouvoir de coupure nominal d'au moins 5.000 ampères symétriques eff., 240 V maximum, se reporter aux tableaux ci-dessous pour connaître les caractéristiques assignées.
-

4 Mounting

Electrical installation

1-phase mains connection 230/240 V

The wiring diagram is valid for I5xAExxxB inverters.

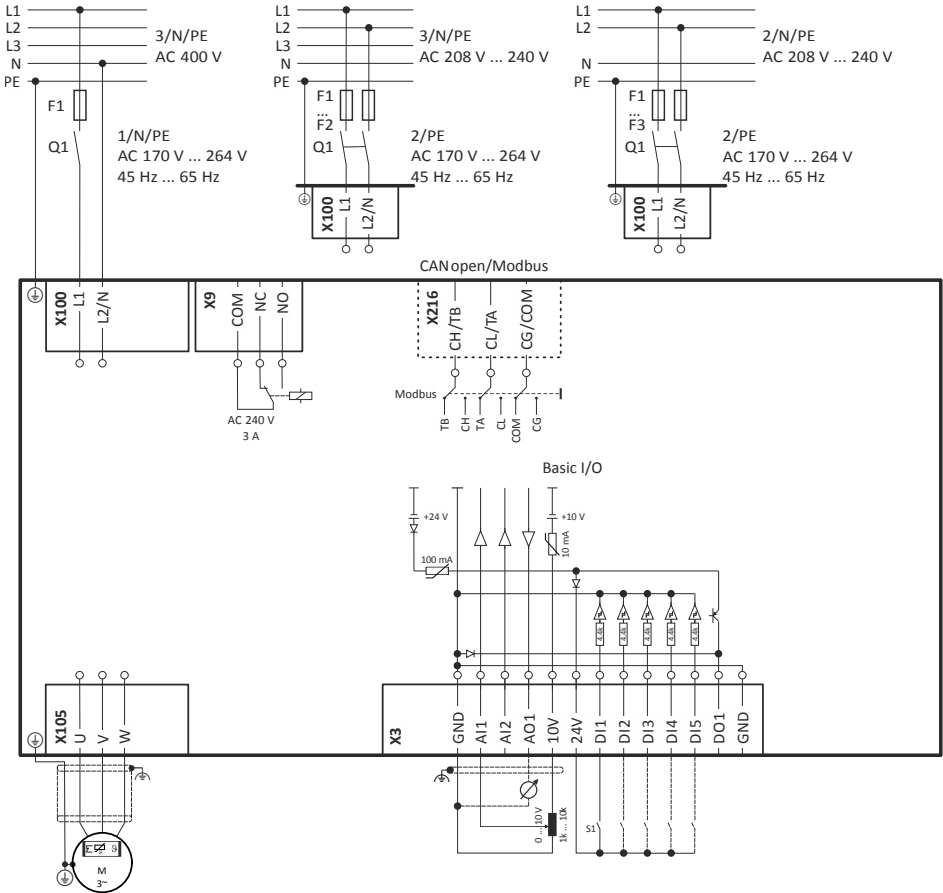


Fig. 1: Wiring example

- | | | | |
|----|----------|-----|-----------------------|
| S1 | Run/Stop | Q1 | Mains contactor |
| Fx | Fuses | --- | Dashed line = options |

4.3.2.1 Fusing and terminal data

Inverter		I51AE125B	I51AE137B	I51AE155B	I51AE175B	I51AE211B	I51AE215B	I51AE222B	
Cable installation in compliance with		UL							
Operation		without mains choke							
Fuse		all acc. to UL 248/CC							
Characteristic		all acc. to UL 248/CC							
Max. rated current	A	15	15	15	15	30	30	30	
Circuit breaker		with mains choke							
Characteristic		all acc. to UL 248/CC							
Max. rated current	A	15	15	15	15	30	30	30	
Operation		with mains choke							
Fuse		all acc. to UL 248/CC							
Characteristic		all acc. to UL 248/CC							
Max. rated current	A	15	15	15	15	30	30	30	
Circuit breaker		with mains choke							
Characteristic		all acc. to UL 248/CC							
Max. rated current	A	15	15	15	15	30	30	30	
Earth-leakage circuit breaker		≥ 30 mA, type A or B							
Mains connection		X100							
Connection		Screw terminal							
Connection type		Screw terminal							
Min. cable cross-section	AWG	18							
Max. cable cross-section	AWG	12				10			
Stripping length	inch	0.32							
Tightening torque	lb-in	4.4				6.2			
Required tool		0.5 x 3.0				0.6 x 3.5			
Motor connection		X105							
Connection		Screw terminal							
Connection type		Screw terminal							
Min. cable cross-section	AWG	18							
Max. cable cross-section	AWG	12							
Stripping length	inch	0.32							
Tightening torque	lb-in	4.4							
Required tool		0.5 x 3.0							
PE connection		PE							
Connection		PE screw							
Connection type		PE screw							
Min. cable cross-section	AWG	18							
Max. cable cross-section	AWG	10							
Stripping length	inch	0.39							
Tightening torque	lb-in	11							
Required tool		0.8 x 5.5							

Mounting

Electrical installation

1/3-phase mains connection 230/240 V

4.3.3 1/3-phase mains connection 230/240 V**WARNING!**

- ▶ Suitable for use on a circuit capable of delivering not more than 5,000 rms symmetrical amperes, 240 V maximum.
 - ▶ When protected by fuses rated as given in tables below.
 - ▶ When protected by a circuit breaker having an interrupting rating not less than 5,000 rms symmetrical amperes, 240 V maximum rated as given in tables below.
 - ▶ -----
 - ▶ Convenient aux circuits non susceptibles de délivrer plus de 5.000 ampères symétriques eff., maximum 240 V.
 - ▶ Avec une protection par des fusibles du calibre indiqué dans les tableaux ci-dessous.
 - ▶ Avec protection par un disjoncteur à pouvoir de coupure nominal d'au moins 5.000 ampères symétriques eff., 240 V maximum, se reporter aux tableaux ci-dessous pour connaître les caractéristiques assignées.
-

The wiring diagram is valid for I5xAExxxD inverters.



I5xAExxxD inverters do not have an integrated EMC filter in the AC mains supply. In order to comply with the EMC requirements according to EN 61800-3, an external EMC filter according to IEC EN 60939 has to be used.

The user must prove that the EN 61800-3 requirements for conformity are fulfilled.

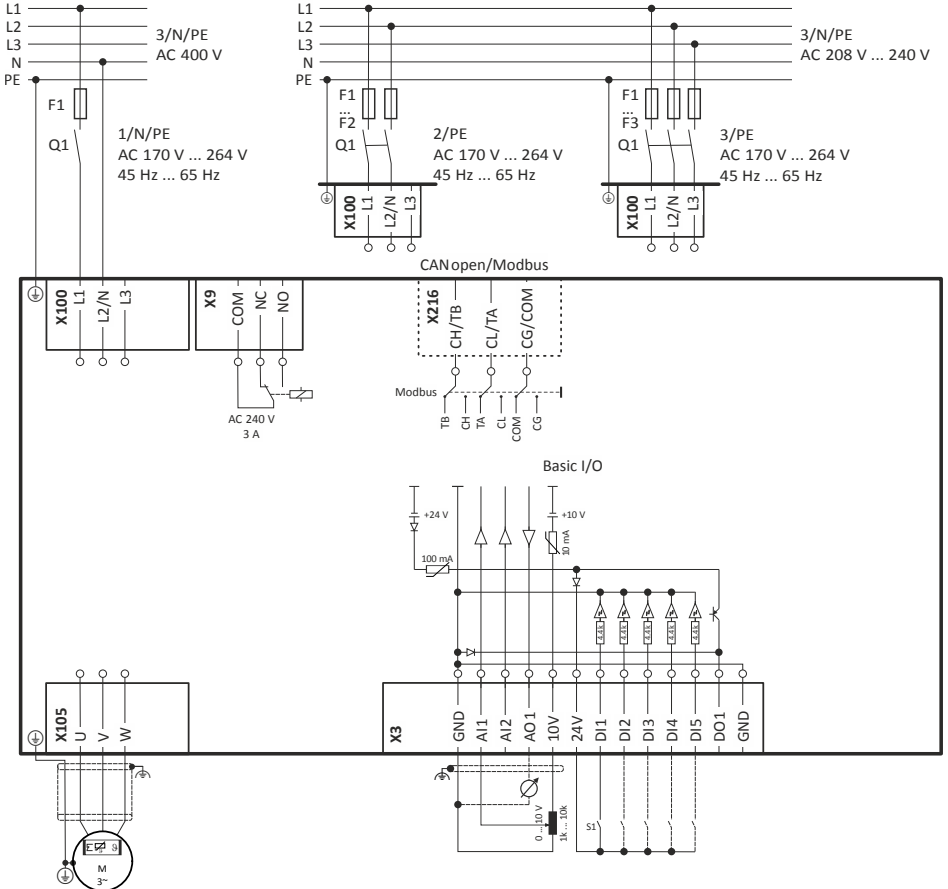


Fig. 2: Wiring example

S1 Run/Stop
Fx Fuses

Q1 Mains contactor
--- Dashed line = options

4 Mounting
 Electrical installation
 1/3-phase mains connection 230/240 V

4.3.3.1 Fusing and terminal data

Inverter		I51AE125D	I51AE137D	I51AE155D	I51AE175D	I51AE211D	I51AE215D	I51AE222D	
Cable installation in compliance with		UL							
Operation		without mains choke							
Fuse		all acc. to UL 248/CC							
Max. rated current	A	15	15	15	15	30	30	30	
Circuit breaker		all acc. to UL 248/CC							
Max. rated current	A	15	15	15	15	30	30	30	
Operation		with mains choke							
Fuse		all acc. to UL 248/CC							
Max. rated current	A	15	15	15	15	30	30	30	
Circuit breaker		all acc. to UL 248/CC							
Max. rated current	A	15	15	15	15	30	30	30	
Earth-leakage circuit breaker		≥ 30 mA, type A or B ≥ 30 mA, type B							
Mains connection		X100							
Connection type		Screw terminal							
Min. cable cross-section	AWG	18							
Max. cable cross-section	AWG	12				10			
Stripping length	inch	0.32							
Tightening torque	lb-in	4.4				6.2			
Required tool		0.5 x 3.0				0.6 x 3.5			
Motor connection		X105							
Connection type		Screw terminal							
Min. cable cross-section	AWG	18							
Max. cable cross-section	AWG	12							
Stripping length	inch	0.32							
Tightening torque	lb-in	4.4							
Required tool		0.5 x 3.0							
PE connection		PE							
Connection type		PE screw							
Min. cable cross-section	AWG	18							
Max. cable cross-section	AWG	10							
Stripping length	inch	0.39							
Tightening torque	lb-in	11							
Required tool		0.8 x 5.5							

4.3.4 3-phase mains connection 480 V

 **WARNING!**

- ▶ Suitable for use on a circuit capable of delivering not more than 5,000 rms symmetrical amperes, 480/277 V maximum.
 - ▶ When protected by fuses rated as given in tables below.
 - ▶ -----
 - ▶ Convenient aux circuits non susceptibles de délivrer plus de 5.000 ampères symétriques eff., maximum 480/277 V.
 - ▶ Avec une protection par des fusibles du calibre indiqué dans les tableaux ci-dessous.
-

4 Mounting

Electrical installation

3-phase mains connection 480 V

The wiring diagram is valid for I5xAExxxF inverters.

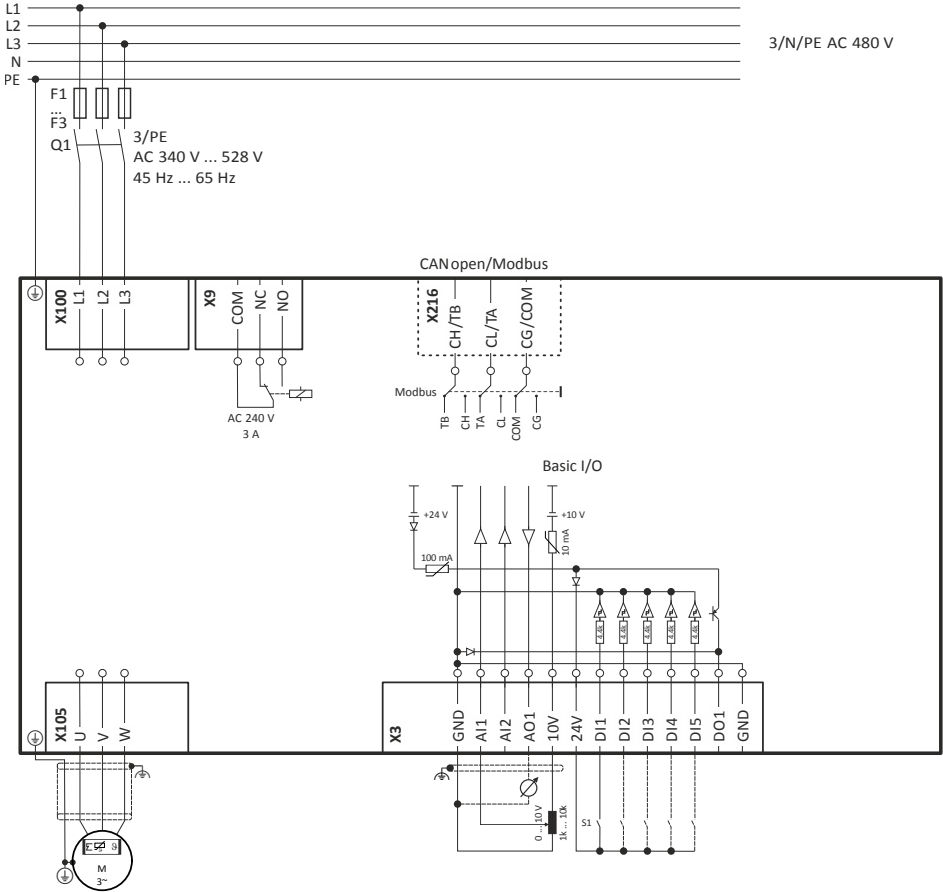


Fig. 3: Wiring example

- S1 Run/Stop
- Fx Fuses

- Q1 Mains contactor
- Dashed line = options

4.3.4.1 Fusing and terminal data

Inverter		I51AE137F	I51AE155F	I51AE175F	I51AE211F	I51AE215F	I51AE222F
Cable installation in compliance with		UL					
Operation		without mains choke					
Fuse							
Characteristic		all acc. to UL 248/CC					
Max. rated current	A	15	15	15	15	15	15
Operation		with mains choke					
Fuse							
Characteristic		all acc. to UL 248/CC					
Max. rated current	A	15	15	15	15	15	15
Earth-leakage circuit breaker		≥ 30 mA, type B					
Mains connection							
Connection		X100					
Connection type		Screw terminal					
Min. cable cross-section	AWG	18					
Max. cable cross-section	AWG	12					
Stripping length	inch	0.32					
Tightening torque	lb-in	4.4					
Required tool		0.5 x 3.0					
Motor connection							
Connection		X105					
Connection type		Screw terminal					
Min. cable cross-section	AWG	18					
Max. cable cross-section	AWG	12					
Stripping length	inch	0.32					
Tightening torque	lb-in	4.4					
Required tool		0.5 x 3.0					
PE connection							
Connection		PE					
Connection type		PE screw					
Min. cable cross-section	AWG	18					
Max. cable cross-section	AWG	10					
Stripping length	inch	0.39					
Tightening torque	lb-in	11					
Required tool		0.8 x 5.5					

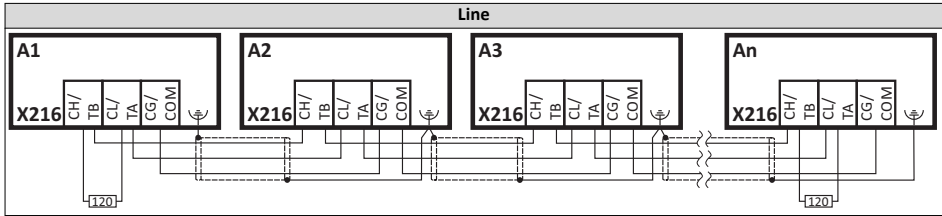
4 Mounting

Electrical installation

CANopen/Modbus

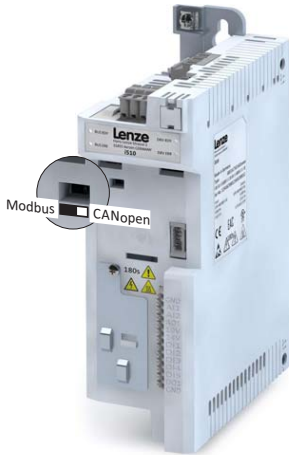
4.3.5 CANopen/Modbus

Typical topologies



Basic network settings

1. Use toggle switch on front of the inverter to select CANopen or Modbus network.



2. Set node address and baud rate via corresponding parameters.

Terminal description	CANopen/Modbus	
Connection		X216
Connection type		Spring terminal
Min. cable cross-section	AWG	22
Max. cable cross-section	AWG	12
Stripping length	inch	0.39
Tightening torque	lb-in	-
Required tool		0.4 x 2.5



The network must be terminated with a 120 Ω resistor at the physically first and last node.
Connect resistor to terminals CH/TB and CL/TA.

5 Commissioning

5.1 Important notes

WARNING!

Incorrect settings during commissioning may cause unexpected and dangerous motor and system movements.

Possible consequence: death, severe injuries or damage to property

- ▶ Clear hazardous area.
 - ▶ Observe safety instructions and safety clearances.
-

5.2 Before initial switch-on

Prevent injury to persons and damage to property. Check the following before switching on the mains voltage:

- Is the wiring complete and correct?
- Are there no short circuits and earth faults?
- Is the motor circuit configuration (star/delta) adapted to the output voltage of the inverter?
- Is the motor connected in-phase (direction of rotation)?
- Does the "emergency stop" function of the entire plant operate correctly?

5 Commissioning

Initial switch-on / functional test with terminal control

5.3 Initial switch-on / functional test with terminal control

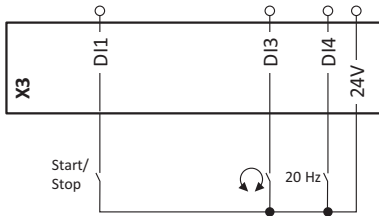
Target: achieve rotation of the motor connected to the inverter as quickly as possible.

Requirements:

- The connected motor matches the inverter in terms of power.
- The parameter settings comply with the delivery status (Lenze setting).

1. Preparation:

1. Wiring of power terminals. (Chapter 4.3 *Electrical installation*)
2. Wire digital inputs X3/DI1 (start/stop), X3/DI3 (reversal of rotation direction), and X3/DI4 (preset frequency setpoint 20 Hz).
3. Do not connect terminal X3/AI1 (analog setpoint selection) or connect it to GND.



2. Switch on mains and check readiness for operation:

1. Switch on mains voltage.
2. Observe LED status displays "RDY" and "ERR" on the front of the inverter:
 - a) If the blue "RDY" LED is blinking and the red "ERR" LED is off, the inverter is ready for operation. The controller is inhibited.
You can now start the drive.
 - b) If the red "ERR" LED is lit permanently, a fault is pending.
Eliminate the fault before you carry on with the functional test.

LED status displays

"RDY" LED (blue)	"ERR" LED (red)	Status/meaning
off	off	No supply voltage.
blinking (2 Hz)	off	Inverter inhibited.
	lit every 1.5 s for a short time	Inverter inhibited, no DC-bus voltage.
	blinking fast (4 Hz)	Inverter inhibited, warning active.
	on	Inverter inhibited, fault active.
on	off	Inverter enabled.
	blinking fast (4 Hz)	Inverter enabled, warning active.
	blinking (1 Hz)	Inverter enabled, quick stop as response to a fault active.

Carrying out the functional test

1. Start drive:

1. Start inverter: X3/DI1 = HIGH.
2. Activate preset frequency setpoint 1 (20 Hz) as speed setpoint: X3/DI4 = HIGH.

The drive rotates with 20 Hz.

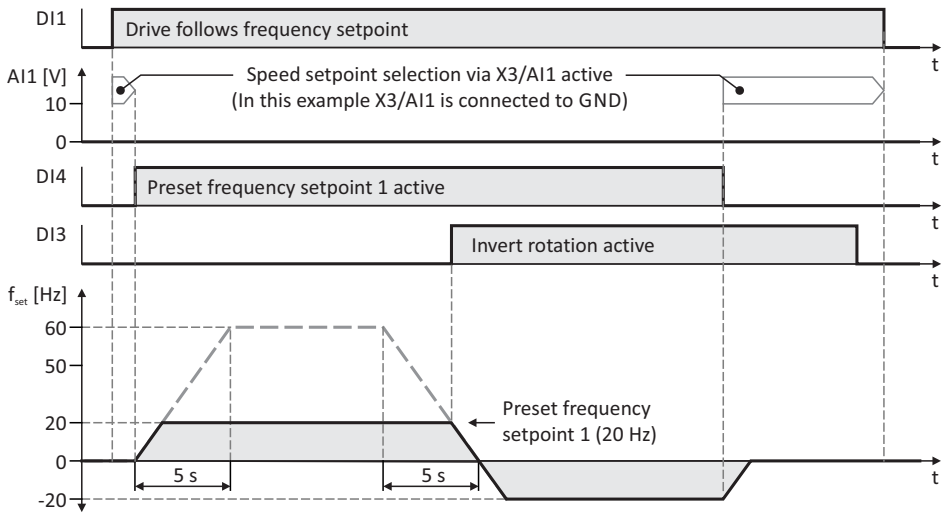
3. Optional: activate the function for the reversal of rotation direction.

a) X3/DI3 = HIGH.

The drive rotates with 20 Hz in the opposite direction.

b) Deactivate the function for the reversal of rotation direction again: X3/DI3 = LOW.

Speed characteristic (example)



2. Stop drive:

1. Deactivate preset frequency setpoint 1 again: X3/DI4 = LOW.
2. Stop inverter again: X3/DI1 = LOW.

The functional test is completed.



The commissioning process of the drive solution is described in a separate commissioning instruction which can be found on the Internet in our download area:

<http://www.lenze.com> → Download

6 Technical data
Standards and operating conditions

6 Technical data

6.1 Standards and operating conditions

Conformities		
CE	2014/35/EU	Low-Voltage Directive
	2014/30/EU	EMC Directive (reference: CE-typical drive system)
EAC	TR TC 004/2011	Eurasian conformity: safety of low voltage equipment
	TP TC 020/2011	Eurasian conformity: electromagnetic compatibility of technical means
RoHS 2	2011/65/EU	Restrictions for the use of specific hazardous materials in electric and electronic devices
Approvals		
UL	UL 61800-5-1	for USA and Canada (requirements of the CSA 22.2 No. 274)
Energy efficiency		
Class IE2	EN 50598-2	Reference: Lenze setting (switching frequency 8 kHz variable)
Degree of protection		
IP20	EN 60529	
Type 1	NEMA 250	Protection against contact
Open type		only in UL-approved systems
Insulation resistance		
Overvoltage category III	EN 61800-5-1	0 ... 2000 m a.m.s.l.
Overvoltage category II		above 2000 m a.m.s.l.
Control circuit isolation		
Safe mains isolation by double/reinforced insulation	EN 61800-5-1	
Protective measures against		
Short circuit		
Earth fault		Earth fault strength depends on the operating status
Overvoltage		
Motor stalling		
Motor overtemperature		I ² xt monitoring
Leakage current		
> 3.5 mA AC, > 10 mA DC	EN 61800-5-1	Observe regulations and safety instructions!
Mains switching		
3-time mains switching in 1 min		Cyclic, without any restrictions
Starting current		
≤ 3 x rated mains current		
Mains systems		
TT		Voltage to earth/ground: max. 300 V
TN		
IT		Apply the measures described for IT systems!
		IT systems are not relevant for UL-approved systems
Operation on public supply systems		
Implement measures to limit the radio interference to be expected:		The machine or plant manufacturer is responsible for compliance with the requirements for the machine/plant!
< 1 kW: with mains choke	EN 61000-3-2	
> 1 kW at mains current ≤ 16 A: without additional measures		
Mains current > 16 A: with mains choke or mains filter, with	EN 61000-3-12	RSCE: short-circuit power ratio at the connection point of the machine/plant to the public network.

dimensioning for rated power. $R_{sc} \geq 120$ is to be met.		
Requirements to the shielded motor cable		
Capacitance per unit length		
C-core-core/C-core-shield < 75/150 pF/m		$\leq 2.5 \text{ mm}^2$ / AWG 14
C-core-core/C-core-shield < 150/300 pF/m		$\geq 4 \text{ mm}^2$ / AWG 12
Electric strength		
$U_0/U = 0.6/1.0 \text{ kV}$		U = r.m.s. value external conductor/external conductor
		U_0 = r.m.s. value external conductor to PE
$U \geq 600 \text{ V}$	UL	U = r.m.s. value external conductor/external conductor
Climate		
1K3 (-25 ... +60 °C)	EN 60721-3-1	Storage
2K3 (-25 ... +70 °C)	EN 60721-3-2	Transport
3K3 (-10 ... +55 °C)	EN 60721-3-3	Operation
		Operation at a switching frequency of 8 or 16 kHz: above +40°C, reduce rated output current by 2.5 %/°C
Site altitude		
0 ... 1000 m a.m.s.l.		
1000 ... 4000 m a.m.s.l.		Reduce rated output current by 5 %/1000 m
Pollution		
Degree of pollution 2	EN 61800-5-1	
Vibration resistance		
Transport		
2M2 (sine, shock)	EN 60721-3-2	
Operation		
Amplitude 1 mm	Germanischer Lloyd	5 ... 13.2 Hz
Acceleration resistant up to 0.7 g		13.2 ... 100 Hz
Amplitude 0.075 mm	EN 61800-5-1	10 ... 57 Hz
Acceleration resistant up to 1 g		57 ... 150 Hz
Noise emission		
Category C2	EN 61800-3	Type-dependent, for motor cable lengths see rated data
Noise immunity		
Meets requirement in compliance with	EN 61800-3	

6 Technical data

1-phase mains connection 230/240 V
Rated data

6.2 1-phase mains connection 230/240 V

6.2.1 Rated data

The output currents apply to these operating conditions:

- At a switching frequency of 2 kHz or 4 kHz: Max. ambient temperature 113 °F.
- At a switching frequency of 8 kHz or 16 kHz: Max. ambient temperature 104 °F.

Inverter		I51AE125B	I51AE137B	I51AE155B	I51AE175B	I51AE211B	I51AE215B	I51AE222B
Rated power	hp	0.33	0.5	0.75	1	1.5	2	3
Mains voltage range		1/N/PE AC 170 V ... 264 V, 45 Hz ... 65 Hz						
Rated mains current								
without mains choke	A	4	5.7	7.6	10	14.3	16.7	22.5
with mains choke	A	3.6	4.8	7.1	8.8	11.9	13.9	16.9
Output current								
2 kHz	A	-	-	3.2	4.2	6	7	9.6
4 kHz	A	1.7	2.4	3.2	4.2	6	7	9.6
8 kHz	A	1.7	2.4	3.2	4.2	6	7	9.6
16 kHz	A	1.1	1.6	2.1	2.8	4	4.7	6.4
Power loss	W	15	20	25	33	42	50	70
Overcurrent cycle 180 s								
Max. output current	A	2.55	3.6	4.8	6.3	9	10.5	14.4
Overload time	s	60	60	60	60	60	60	60
Recovery time	s	120	120	120	120	120	120	120
Max. output current during the recovery time	A	1.28	1.8	2.4	3.15	4.5	5.25	7.2
Overcurrent cycle 15 s								
Max. output current	A	3.4	4.8	6.4	8.4	12	14	19.2
Overload time	s	3	3	3	3	3	3	3
Recovery time	s	12	12	12	12	12	12	12
Max. output current during the recovery time	A	1.28	1.8	2.4	3.15	4.5	5.25	7.2
Motor cable length								
shielded, without EMC	ft	164						
C2 residential area / industrial premises	ft	49			65			
Weight	lb	1.7		2.1		3		

6.3 1/3-phase mains connection 230/240 V



I5xAExxD inverters do not have an integrated EMC filter in the AC mains supply.

In order to comply with the EMC requirements according to EN 61800–3, an external EMC filter according to IEC EN 60939 has to be used.

The user must prove that the EN 61800–3 requirements for conformity are fulfilled.

6.3.1 Rated data

The output currents apply to these operating conditions:

- At a switching frequency of 2 kHz or 4 kHz: Max. ambient temperature 113 °F.
- At a switching frequency of 8 kHz or 16 kHz: Max. ambient temperature 104 °F.

Inverter		I51AE125D	I51AE137D	I51AE155D	I51AE175D	I51AE211D	I51AE215D	I51AE222D
Rated power	hp	0.33	0.5	0.75	1	1.5	2	3
Mains voltage range		1/N/PE AC 170 V ... 264 V, 45 Hz ... 65 Hz						
Rated mains current								
without mains choke	A	4	5.7	7.6	10	14.3	16.7	22.5
with mains choke	A	3.6	4.8	7.1	8.8	11.9	13.9	16.9
Mains voltage range		3/PE AC 170 V ... 264 V, 45 Hz ... 65 Hz						
Rated mains current								
without mains choke	A	2.6	3.9	4.8	6.4	7.8	9.5	13.6
with mains choke	A	2	3	3.8	5.1	5.6	6.8	9.8
Output current								
2 kHz	A	-	-	3.2	4.2	6	7	9.6
4 kHz	A	1.7	2.4	3.2	4.2	6	7	9.6
8 kHz	A	1.7	2.4	3.2	4.2	6	7	9.6
16 kHz	A	1.1	1.6	2.1	2.8	4	4.7	6.4
Power loss	W	17	22	28	36	46	55	77
Overcurrent cycle 180 s								
Max. output current	A	2.55	3.6	4.8	6.3	9	10.5	14.4
Overload time	s	60	60	60	60	60	60	60
Recovery time	s	120	120	120	120	120	120	120
Max. output current during the recovery time	A	1.28	1.8	2.4	3.15	4.5	5.25	7.2
Overcurrent cycle 15 s								
Max. output current	A	3.4	4.8	6.4	8.4	12	14	19.2
Overload time	s	3	3	3	3	3	3	3
Recovery time	s	12	12	12	12	12	12	12
Max. output current during the recovery time	A	1.28	1.8	2.4	3.15	4.5	5.25	7.2
Motor cable length								
shielded, without EMC	ft	164						
Weight	lb	1.7		2.1		3		

6 Technical data

3-phase mains connection 480 V
Rated data

6.4 3-phase mains connection 480 V





6.4.1 Rated data

The output currents apply to these operating conditions:

- At a switching frequency of 2 kHz or 4 kHz: Max. ambient temperature 113 °F.
- At a switching frequency of 8 kHz or 16 kHz: Max. ambient temperature 104 °F.

Inverter		I51AE137F	I51AE155F	I51AE175F	I51AE211F	I51AE215F	I51AE222F
Rated power	hp	0.5	0.75	1	1.5	2	3
Mains voltage range		3/PE AC 340 V ... 528 V, 45 Hz ... 65 Hz					
Rated mains current							
without mains choke	A	1.5	2.1	2.8	3.7	4.5	6.5
with mains choke	A	1.2	1.7	2.2	2.5	3.1	4.4
Output current							
2 kHz	A	-	1.6	2.1	3	3.5	4.8
4 kHz	A	1.1	1.6	2.1	3	3.5	4.8
8 kHz	A	1.1	1.6	2.1	3	3.5	4.8
16 kHz	A	0.7	1.1	1.4	2	2.3	3.2
Power loss	W	24	31	40	51	61	85
Overcurrent cycle 180 s							
Max. output current	A	1.65	2.4	3.15	4.5	5.25	7.2
Overload time	s	60	60	60	60	60	60
Recovery time	s	120	120	120	120	120	120
Max. output current during the recovery time	A	0.825	1.2	1.58	2.25	2.63	3.6
Overcurrent cycle 15 s							
Max. output current	A	2.2	3.2	4.2	6	7	9.6
Overload time	s	3	3	3	3	3	3
Recovery time	s	12	12	12	12	12	12
Max. output current during the recovery time	A	0.825	1.2	1.58	2.25	2.63	3.6
Motor cable length							
shielded, without EMC	ft	49	164				
C2 residential area / industrial premises	ft	49			65		
Weight	lb	1.7	2.1		3		

 Lenze Drives GmbH
Postfach 10 13 52, D-31763 Hameln
Breslauer Straße 3, D-32699 Extertal
Germany
HR Lemgo B 6478
 +49 5154 82-0
 +49 5154 82-2800
 lenze@lenze.com
 www.lenze.com

 Lenze Service GmbH
Breslauer Straße 3, D-32699 Extertal
Germany
 0080002446877 (24 h helpline)
 +49 5154 82-1112
 service.de@lenze.com

TD 20151204

