

BALDOR® • RELIANCE

Product Information Packet

L1410TM

5HP, 1725RPM, 1PH, 60HZ, 184T, 3640LC, OPEN, F1

Copyright © All product information within this document is subject to Baldor Electric Company copyright © protection, unless otherwise noted.

Part Detail							
Revision:	AP	Status:	PRD/A	Change #:		Proprietary:	No
Type:	AC	Prod. Type:	3640LC	Elec. Spec:	36WGW903	CD Diagram:	
Enclosure:	OPEN	Mfg Plant:		Mech. Spec:	36F009	Layout:	
Frame:	184T	Mounting:	F1	Poles:	04	Created Date:	
Base:	RG	Rotation:	R	Insulation:	F	Eff. Date:	05-24-2012
Leads:	2#10 A PH,3#16 B&J	Literature:		Elec. Diagram:		Replaced By:	

Nameplate NP1257L

CAT.NO.	L1410TM						
SPEC.	36F09W903						
HP	5						
VOLTS	230						
AMP	23						
RPM	1725						
FRAME	184T	HZ	60	PH	1		
SER.F.	1.15	CODE	G	DES	L	CL	F
NEMA-NOM-EFF	82.5	PF	87				
RATING	40C AMB-CONT						
CC	USABLE AT 208V			25			
DE	6206	ODE	6205				
ENCL	OPEN	SN					

Parts List		
Part Number	Description	Quantity
SA034811	SA 36F09W903	1.000 EA
RA030839	RA 36F09W903	1.000 EA
TPBRT00DB	THERMAL 1PH 1.25 MAN 120CWELDED	1.000 EA
TP5059	GENERIC THERMAL KIT	1.000 EA
36CB3004A02	36 CB 1.09 @ 6, 1.25 MTO @ 3	1.000 EA
HA6015A09	THERMAL RETAINER	1.000 EA
51XB1214A10	12-14 X 5/8HX WS SL SR TYBX	2.000 EA
51XB1016A08	10-16X 1/2HXWSSLD SERTYB	2.000 EA
11XW1032G06	10-32 X .38, TAPTITE II, HEX WSHR SLTD U	1.000 EA
36EP3200A01SP	FR ENDPLATE, MACH	1.000 EA
HW4500A01	1641B(ALEMITE)400 UNIV, GREASE FITT	1.000 EA
SP1008A01	BAFFLE, MODEL 36 & 37	1.000 EA
13XF0832A08	8-32 X.50 PAN HD,SLTD, TYPE F SCREW, ZIN	2.000 EA
10XN2520A12	O1/4-20X 3/4 HEX HEAD CAP	2.000 EA
HW5100A05	WVY WSHR F/205 & 304 BRGS	1.000 EA
36EP3201A01	PU ENDPLATE, MACH 182-4T	1.000 EA
HW4500A01	1641B(ALEMITE)400 UNIV, GREASE FITT	1.000 EA
XY2520A12	1/4-20 HEX NUT, DIRECTIONAL SERRATIONS	4.000 EA
36CB4516	36 LIPPED CB LID	1.000 EA
51XN0832A07	08-32 #10 & SMALLER HEX. WASHER HEAD, SL	4.000 EA
HW2501E16	3KEY, 1/4 SQ X 1.750	1.000 EA
HA7000A02	KEY RETAINER RING, 1 1/8 DIA, 1 3/8 DIA	1.000 EA
85XU0407S04	4X1/4 U DRIVE PIN STAINLESS	2.000 EA
MJ1000A75	GREASE, POLYREX EM EXXON	0.050 LB

Parts List (continued)		
Part Number	Description	Quantity
MG1000G27	PAINT- S9282E CHARCOAL GREY	0.022 GA
LB1115	LABEL,LIFTING DEVICE	1.000 EA
HA3101A40	THRUBOLT 1/4-20 X 12.687	4.000 EA
36CB5005A03	CAPACITOR BOX KIT, 36CB3800, OC3040F09,	1.000 EA
SP5064A01	MODEL 36 TYPE LC STATIONARY SWITCH LEAD	1.000 EA
LB1119	WARNING LABEL	1.000 EA
LB1125C01	STD (STOCK) CARTON LABEL BALDOR WITH FLA	1.000 EA
LC0002	CONNECTION LABEL	1.000 EA
LB1087	LABEL,MANUAL RESET (ROLL LABEL)	1.000 EA
HA6362ZP	LIFTING LUG FOR 36 FRAME MOTORS.	2.000 EA
NP1257L	ALUM UL CSA CC THERMAL REV MTG	1.000 EA
G7PA1000	PACKAGING GROUP / BALDOR	1.000 EA

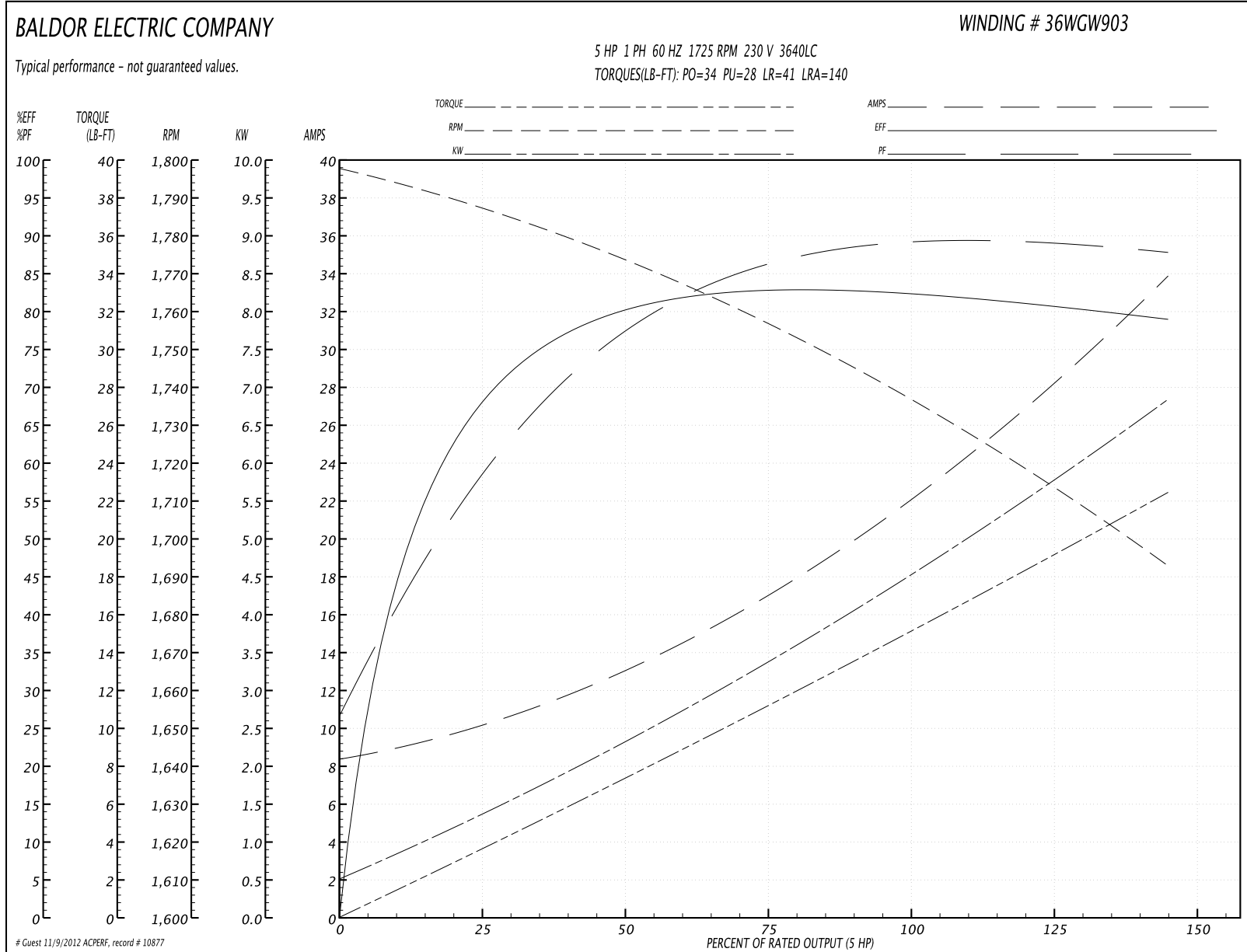
Accessories		
Part Number	Description	Multiplier
36-3403	C FACE KIT	A8
36EP1405A09SP	D-FLANGE KIT	A8

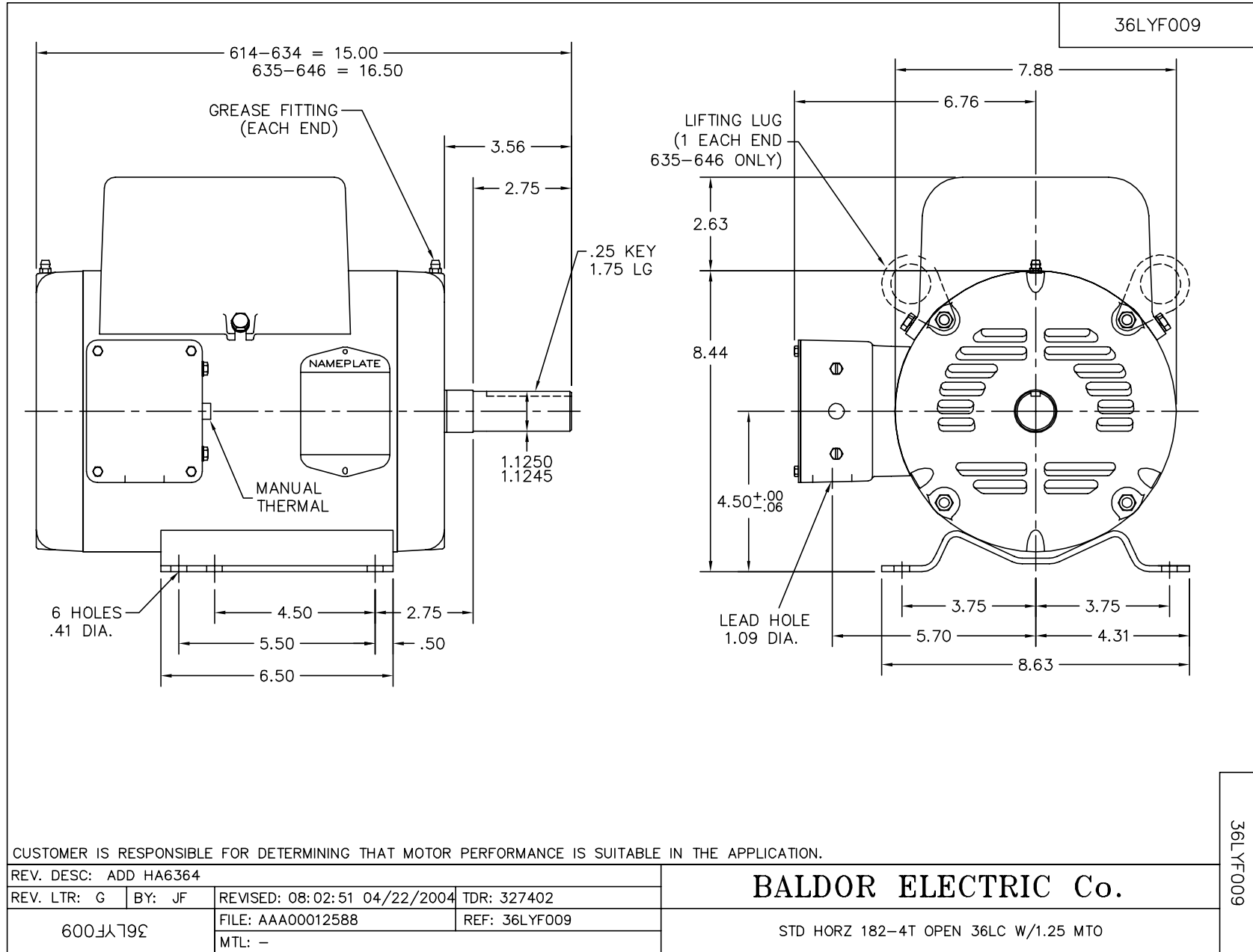
Performance Data at 230V, 60Hz, 5.0HP (Typical performance - Not guaranteed values)

General Characteristics			
Full Load Torque:	15.0 LB-FT	Start Configuration:	DOL
No-Load Current:	8.4 Amps	Break-Down Torque:	34.0 LB-FT
Line-line Res. @ 25°C.:	0.45 Ohms A Ph / 1.56 Ohms B Ph	Pull-Up Torque:	28.0 LB-FT
Temp. Rise @ Rated Load:	90 C	Locked-Rotor Torque:	41.0 LB-FT
Temp. Rise @ S.F. Load:	110 C	Starting Current:	140.0 Amps

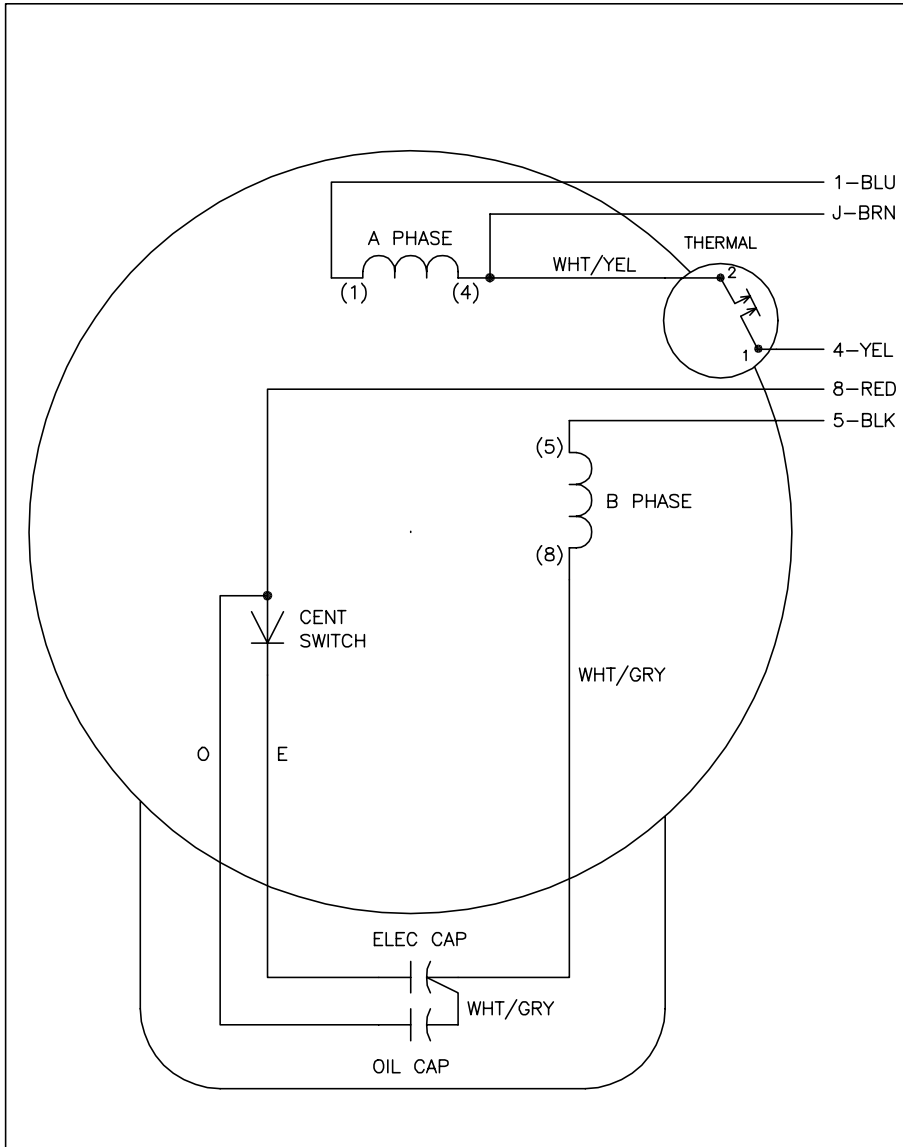
Load Characteristics							
% of Rated Load	25	50	75	100	125	150	S.F.
Power Factor:	60.0	78.0	86.0	89.0	91.0	91.0	0.0
Efficiency:	67.2	79.2	82.7	83.0	81.5	78.5	0.0
Speed:	1786.0	1772.0	1756.0	1739.0	1718.0	1691.0	0.0
Line Amperes:	10.1	13.2	17.2	21.9	27.4	34.0	25.2

Performance Graph at 230V, 60Hz, 5.0HP Typical performance - Not guaranteed values





CD0002A04

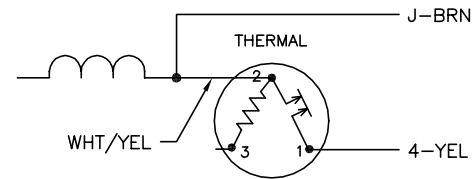


	LINE A	LINE B	JOIN
STD	1,8	4	J,5
OPP	1,5	4	J,8

NOTES:

1. STANDARD ROTATION IS CCW FACING END OPPOSITE SHAFT EXTENSION.
2. MULTIPLE CAPACITORS ARE CONNECTED IN PARALLEL UNLESS OTHERWISE SPECIFIED.
3. LEAD COLORS ARE OPTIONAL. LEADS MUST ALWAYS BE NUMBERED AS SHOWN.

BYPASSING THE HEATER OF A THREE-TERMINAL THERMAL



REV. DESC: NEW	VERSION: 00	TDR: 000000360649
REV. LTR: -	FILE: \AAA\00126\009	REVISED: 17:08:44 04/15/2005
CD0002A04	MTL: -	BY: ENJOEPO

BALDOR ELECTRIC Co.

TYPE LC, SV, REV, 2-TERMINAL THERMAL, 5 LEADS

CD0002A04