

LE550



## Laser Measurement Sensor

LE550 Laser Sensor: Ready to measure from **100 to 1000 mm** right out of the box.

- **Easy adjustment** with a two-line, eight-character intuitive display
- Repeatability and accuracy for challenging targets, from **metal to black rubber**
- Ideal for:
  - Loop control
  - Roll diameter
  - Thickness measurement
  - Positioning





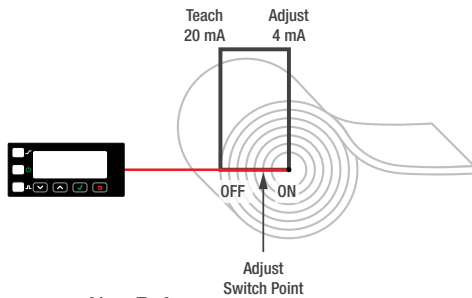
## LE550 Laser Measurement Sensor

Simple Adjustment No Matter the Application



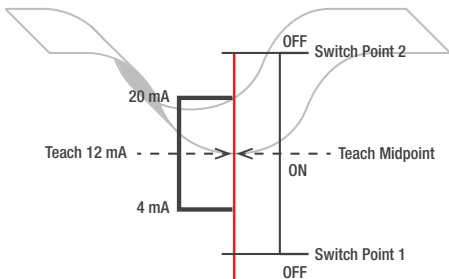
### Control Speed

Analog Output [A\_OUT]



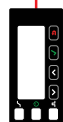
### Alert Before Roll is Complete

Discrete Output [D\_OUT]



### Tension Control

Analog Output [A\_OUT]



### Detect Faulty or Broken Loop

Discrete Output [D\_OUT]



Operating Conditions:  
Temperature:  $-20^{\circ}$  to  $+55^{\circ}$  C  
( $-4^{\circ}$  to  $+131^{\circ}$  F)  
Humidity: 90% at  $+55^{\circ}$  C

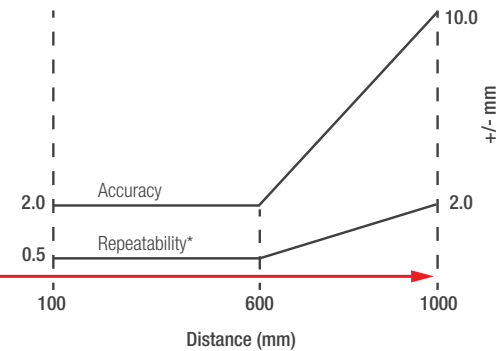
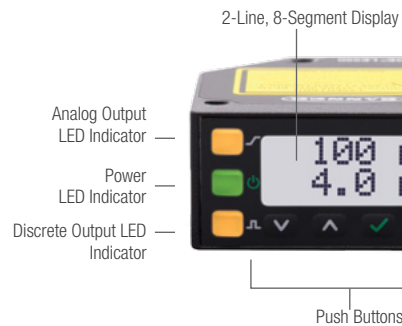
Supply Voltage:  
12 to 30 V dc



Housing:  
Die-cast zinc  
Rated IP67; NEMA 6

Lens Cover:  
Polycarbonate

Visible Red  
Class 2 Laser  
650 nm



\* Repeatability displayed for standard response speed (5 ms)  
For exact performance see manual.



## Family

**LE**

## Range

**550**

550 = 100-1000 mm

## Output

**I**

I = 4 to 20 mA analog  
U = 0 to 10 V analog  
NOTE: Discrete NPN/PNP  
is user configurable

## Connector

**Q**

Blank = 2 m Integral Cable  
Q = Rotatable M12 Euro QD  
QP = PVC M12 Euro Pigtail QD  
W/30 = 9 m Integral Cable

QD models require mating cordset

Talk with an app engineer. Get product specs. Order now.

[bannerengineering.com](http://bannerengineering.com)

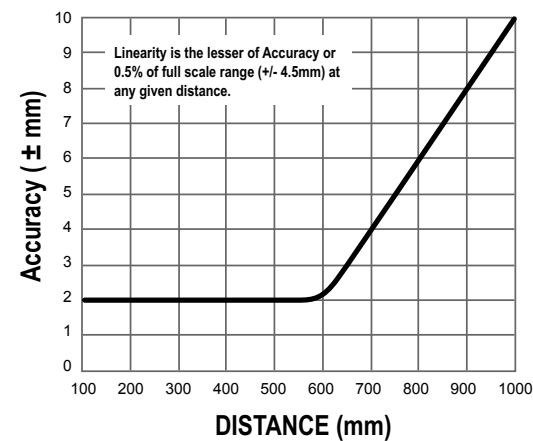
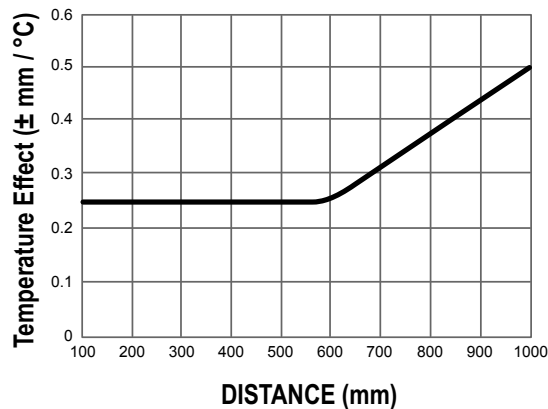
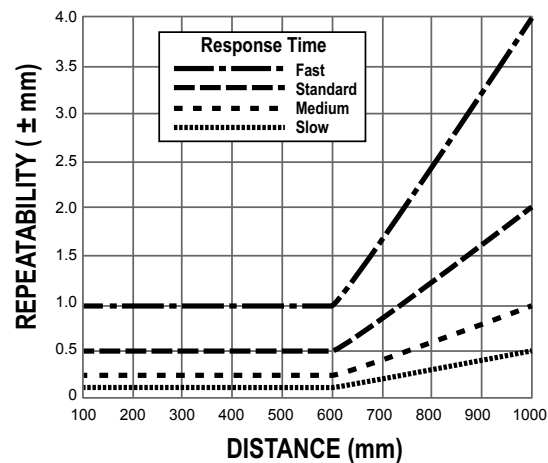
1-888-373-6767

**BANNER**  
more sensors, more solutions



## LE550 Laser Measurement Sensor

Sensing Beam	Visible Red Class 2 Laser, 650 nm
Supply Voltage	12 to 30 V dc
Sensing Range	100 mm to 1000 mm
Output Configuration	Analog: 4 to 20 mA or 0 to 10 V, depending on model Discrete: NPN/PNP is user configurable
Analog Resolution	100 to 600 mm: <0.5 mm 600 to 1000 mm: <1 mm
Analog Linearity	Linearity is the lesser of Accuracy or 0.5% of full scale range (+/- 4.5 mm) at any given distance
Output Response Time	Fast: 2 ms      Standard: 5 ms Medium: 15 ms      Slow: 50 ms
Spot Size	@100 mm: 4.4 mm x 1.3 mm @1000 mm: 6.3 mm x 2.4 mm
Ambient Light Immunity	10,000 lux
Construction	Housing: Die-cast zinc Lens Cover: Polycarbonate
Environmental Rating	Housing: IP67, NEMA 6
Operating Conditions	Temperature: -20° to +55 °C (-4° to +131 °F) Humidity: 90% @ 55 °C (non-condensing)
Cerifications	CE UL pending



Talk with an app engineer. Get product specs. Order now.

[bannerengineering.com](http://bannerengineering.com)

1-888-373-6767

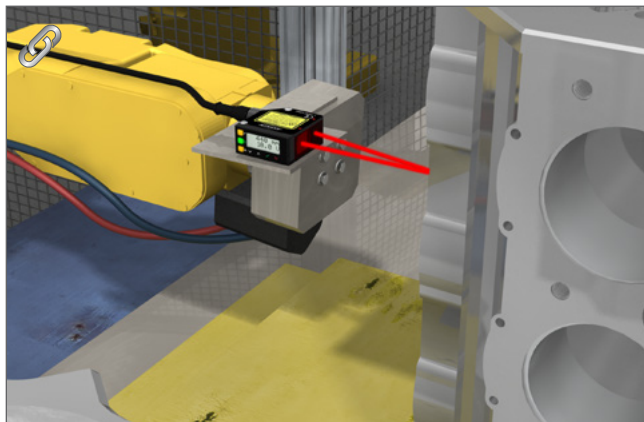






LE550 Laser  
Measurement Sensor

### Automotive



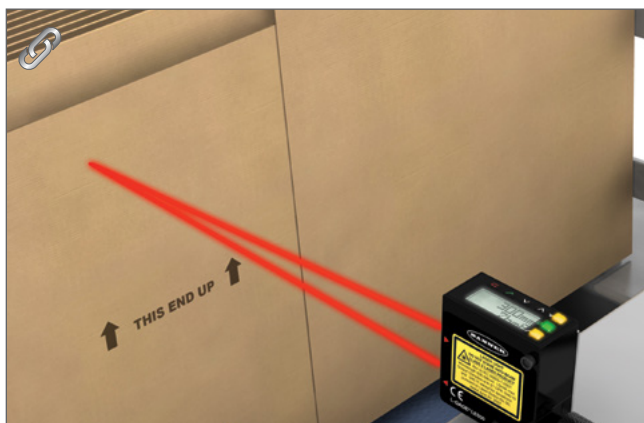
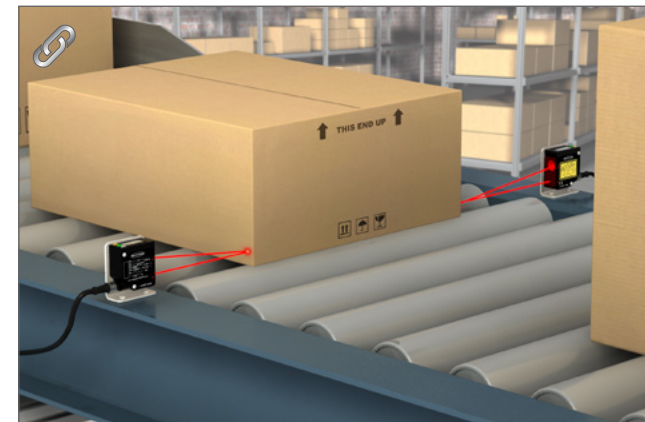
### Quality Control

- Detect objects to verify part-in-place and/or proper assembly
- Measure part size and/or flatness
- Detect overlapping or excess material

### Process Control

- Speed control for wind/unwind operations
- Web tension control
- Part or end-effector positioning
- Fill control
- Product identification and sorting

### Material Handling



### Packaging



### Textile

Talk with an app engineer. Get product specs. Order now.

[bannerengineering.com](http://bannerengineering.com)

1-888-373-6767

**BANNER**  
more sensors, more solutions



LE550 Laser  
Measurement Sensor



RUN Mode

Enter Menu

\$MENU  
A\_OUT✓

Analog Output Settings

\$MENU  
D\_OUT✓

Discrete Output Settings

\$MENU  
INPUT✓

Input Settings (Remote TEACH, Trigger Mode, etc.)

\$MENU  
MEASURE✓

Speed Settings trigger measurements

\$MENU  
DISPLAY✓

Display Units, Orientation, Sleep

\$MENU  
INFO✓

Sensor Info

\$MENU  
RESET✓

Restore Factory Defaults

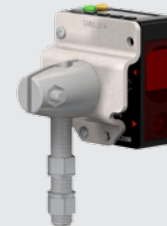
## Accessories



[SMBLEL](#)



[SMBLEU](#)



[SMBLEFA](#)



5-Pin M12/Euro-Style  
Cordsets with Shield  
Straight connector  
models listed

[MQDEC2-506](#)

2 m (6.5')

[MQDEC2-515](#)

5 m (15')

[MQDEC2-530](#)

9 m (30')

[MQDEC2-550](#)

15 m (50')

Talk with an app engineer. Get product specs. Order now.

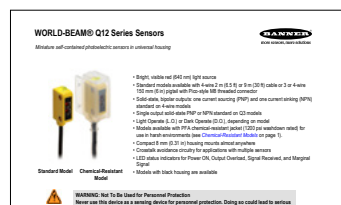
[bannerengineering.com](http://bannerengineering.com)

1-888-373-6767

**BANNER**  
more sensors, more solutions

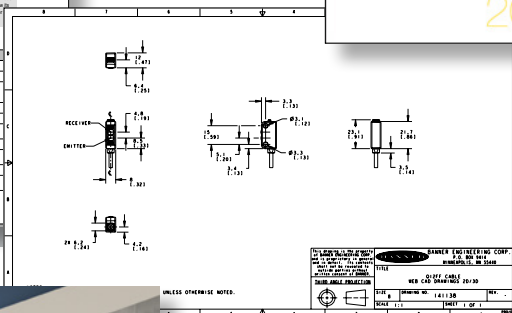
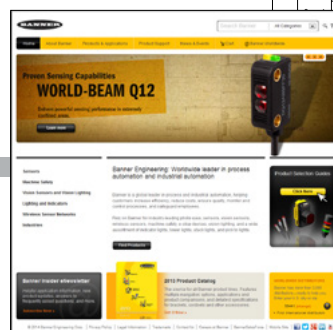
## LE550 Laser Measurement Sensor

**Link to data sheets**

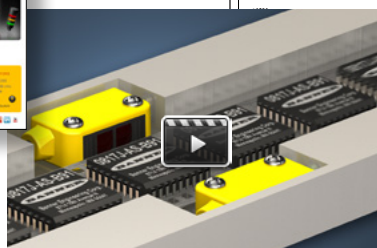


**Link to  
catalog**

**Link to the Banner website**



**Link to  
CAD files**



### Link to videos



Talk with an app engineer. Get product specs. Order now.

bannerengineering.com

**1-888-373-6767**

