



Versatile, Rugged, Laser Distance Sensor

Superior Performance: Reliably detects distance changes as small as 1 mm.

Versatile

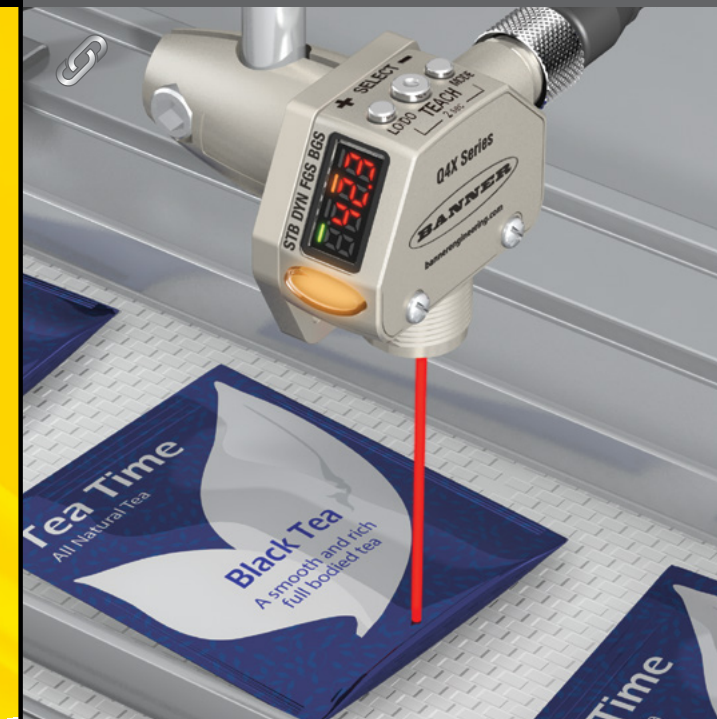
Reliable **sensing range of 25 to 300 mm** across a variety of target colors, materials and surfaces with multiple sensing modes in one device.

Durable

Robust housing rated to IP69K with **FDA-grade stainless steel** resists mechanical impact, over tightening and extreme vibration.

Easy to Use

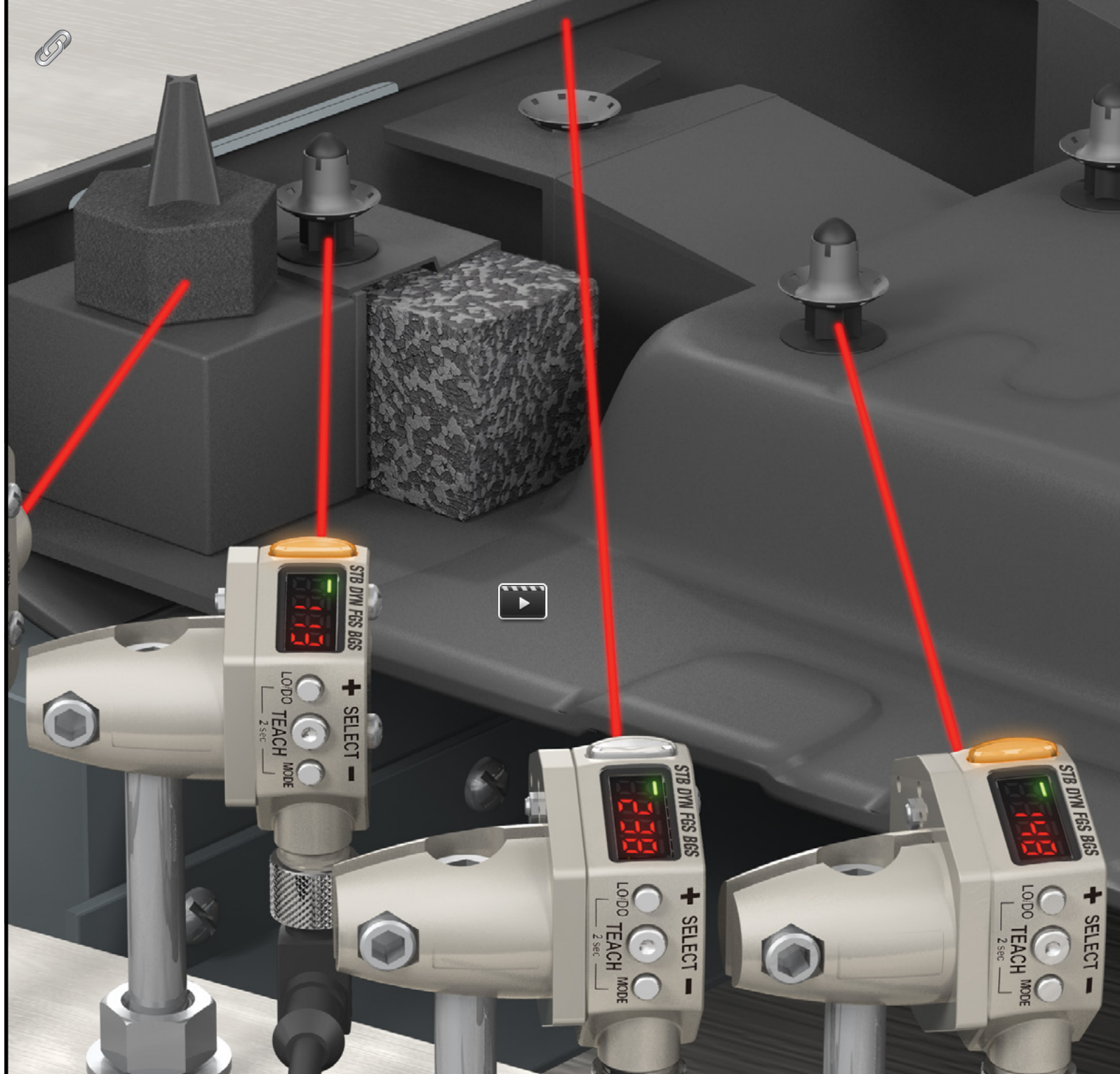
Simplified user experience with a **clear distance readout** from the angled four-digit display and easy setup with responsive buttons.



Q4X

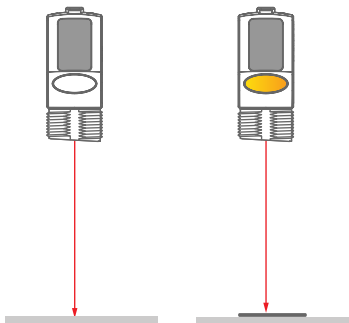


Q4X Laser
Distance Sensor

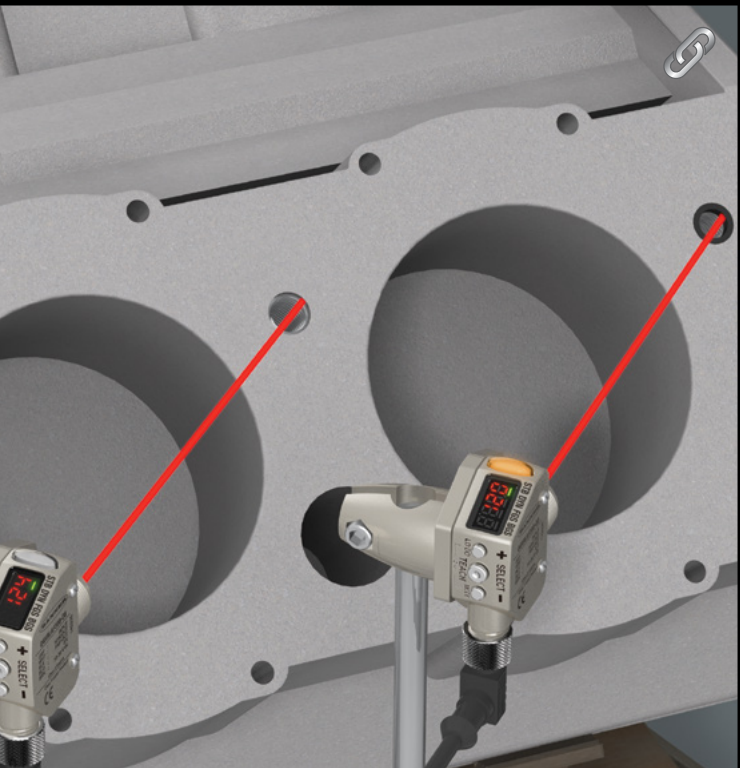
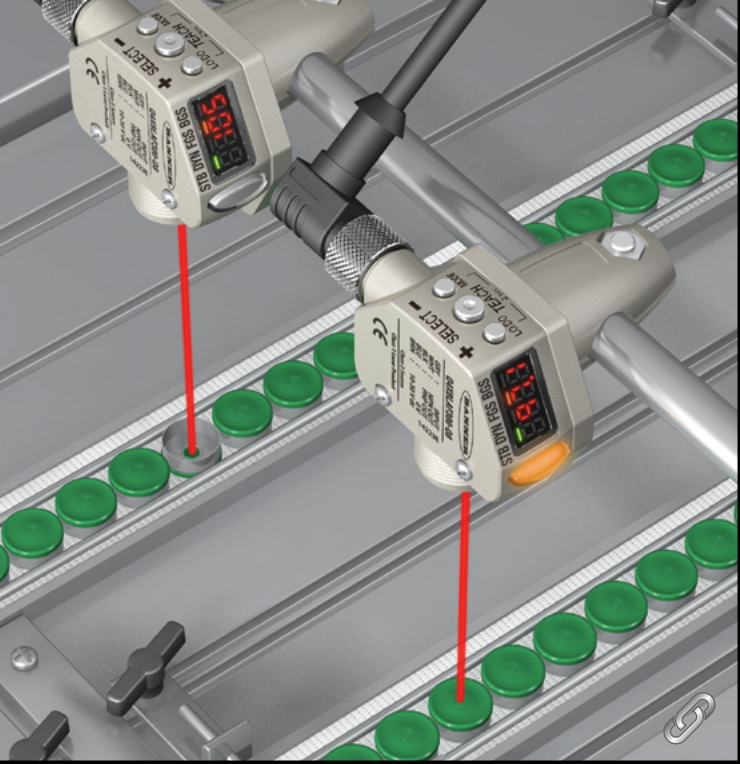


Performance

- Solves difficult distance-based applications including black foam on black plastic, black rubber in front of metal, multicolor packaging and targets of all colors
- Used for presence/absence or orientation detection



Can detect a 1 mm target at a range of 25 to 50 mm



Angled Four-Digit Display

- Shows distance from sensor to target for clear measurement display
- Easy to read at all angles
- Display can be inverted for easy mounting, which allows readability from a variety of angles



LED Output Indicator

Three tactile buttons for easy setup



316L Stainless Steel Housing

Stability and Active Teach

- STB = Stability: Signal strength indication
- DYN = Dynamic background suppression
- FGS = One-point window (foreground suppression)
- BGS = One-point background suppression

Visible decimal point for clear measurement readout under 100 mm



Q4X Laser
Distance Sensor



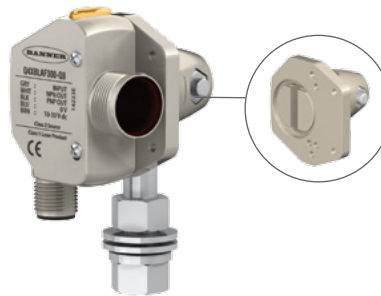
- Best in class excess gain: Detection of 1% black targets out to 300 mm
- User selectable output response time from 1.5 to 50 milliseconds
- Rated to IP67, IP68 and IP69K
- CE and UL approved
- Patent pending



Family	Housing Style	Output	Mode	Range	Connector
Q4X	T	B	LAF	300	Q8
	T = 18 mm Threaded Barrel	B = Bipolar	LAF = Laser Adjustable-Field	300 = 25-300 mm	Q8 = 5-pin Integral QD <i>QD models require mating cordset</i>

Order Now

Accessories



SMBQ4XFA
includes 3/8" bolt for mounting

SMBQ4XFAM10
includes 10 mm bolt for mounting

SMBQ4XFAM12
clamps directly onto industry standard bracket systems of 1/2" or 12 mm rods

5-Pin M12/ Euro-Style Cordsets
Straight connector models listed; for right-angle, add RA to the end of the model number (example, **MQDC1-506RA**)



MQDC1-506
2 m (6.5')
MQDC1-515
5 m (15')
MQDC1-530
9 m (30')

5-Pin M12/ Euro-Style Washdown Cordset
Straight connector models only



MQDC-WDSS-0506
2 m (6.5')
MQDC-WDSS-0515
5 m (15')
MQDC-WDSS-0530
9 m (30')



Q4X Laser Distance Sensor

Link to data sheets

WORLD-BEAM® Q12 Series Sensors

Mixable self-contained photoelectric sensors in universal housing

- Bright, visible red (640 nm) light source
- Standard models available with 4, 6, 8, 10, 12, 15, 18, 24, 30, 36, 45, 60, 75, 90, 108, 126, 144, 162, 180, 216, 252, 270, 306, 324, 360, 378, 405, 432, 450, 468, 486, 504, 540, 576, 603, 630, 648, 666, 684, 702, 720, 738, 756, 774, 792, 810, 828, 846, 864, 882, 900, 918, 936, 954, 972, 990, 1008, 1026, 1044, 1062, 1080, 1098, 1116, 1134, 1152, 1170, 1188, 1206, 1224, 1242, 1260, 1278, 1296, 1314, 1332, 1350, 1368, 1386, 1404, 1422, 1440, 1458, 1476, 1494, 1512, 1530, 1548, 1566, 1584, 1602, 1620, 1638, 1656, 1674, 1692, 1710, 1728, 1746, 1764, 1782, 1800, 1818, 1836, 1854, 1872, 1890, 1908, 1926, 1944, 1962, 1980, 1998, 2016, 2034, 2052, 2070, 2088, 2106, 2124, 2142, 2160, 2178, 2196, 2214, 2232, 2250, 2268, 2286, 2304, 2322, 2340, 2358, 2376, 2394, 2412, 2430, 2448, 2466, 2484, 2502, 2520, 2538, 2556, 2574, 2592, 2610, 2628, 2646, 2664, 2682, 2700, 2718, 2736, 2754, 2772, 2790, 2808, 2826, 2844, 2862, 2880, 2898, 2916, 2934, 2952, 2970, 2988, 3006, 3024, 3042, 3060, 3078, 3096, 3114, 3132, 3150, 3168, 3186, 3204, 3222, 3240, 3258, 3276, 3294, 3312, 3330, 3348, 3366, 3384, 3402, 3420, 3438, 3456, 3474, 3492, 3510, 3528, 3546, 3564, 3582, 3600, 3618, 3636, 3654, 3672, 3690, 3708, 3726, 3744, 3762, 3780, 3798, 3816, 3834, 3852, 3870, 3888, 3906, 3924, 3942, 3960, 3978, 3996, 4014, 4032, 4050, 4068, 4086, 4104, 4122, 4140, 4158, 4176, 4194, 4212, 4230, 4248, 4266, 4284, 4302, 4320, 4338, 4356, 4374, 4392, 4410, 4428, 4446, 4464, 4482, 4500, 4518, 4536, 4554, 4572, 4590, 4608, 4626, 4644, 4662, 4680, 4698, 4716, 4734, 4752, 4770, 4788, 4806, 4824, 4842, 4860, 4878, 4896, 4914, 4932, 4950, 4968, 4986, 5004, 5022, 5040, 5058, 5076, 5094, 5112, 5130, 5148, 5166, 5184, 5202, 5220, 5238, 5256, 5274, 5292, 5310, 5328, 5346, 5364, 5382, 5400, 5418, 5436, 5454, 5472, 5490, 5508, 5526, 5544, 5562, 5580, 5598, 5616, 5634, 5652, 5670, 5688, 5706, 5724, 5742, 5760, 5778, 5796, 5814, 5832, 5850, 5868, 5886, 5904, 5922, 5940, 5958, 5976, 5994, 6012, 6030, 6048, 6066, 6084, 6102, 6120, 6138, 6156, 6174, 6192, 6210, 6228, 6246, 6264, 6282, 6300, 6318, 6336, 6354, 6372, 6390, 6408, 6426, 6444, 6462, 6480, 6498, 6516, 6534, 6552, 6570, 6588, 6606, 6624, 6642, 6660, 6678, 6696, 6714, 6732, 6750, 6768, 6786, 6804, 6822, 6840, 6858, 6876, 6894, 6912, 6930, 6948, 6966, 6984, 7002, 7020, 7038, 7056, 7074, 7092, 7110, 7128, 7146, 7164, 7182, 7200, 7218, 7236, 7254, 7272, 7290, 7308, 7326, 7344, 7362, 7380, 7398, 7416, 7434, 7452, 7470, 7488, 7506, 7524, 7542, 7560, 7578, 7596, 7614, 7632, 7650, 7668, 7686, 7704, 7722, 7740, 7758, 7776, 7794, 7812, 7830, 7848, 7866, 7884, 7902, 7920, 7938, 7956, 7974, 7992, 8010, 8028, 8046, 8064, 8082, 8100, 8118, 8136, 8154, 8172, 8190, 8208, 8226, 8244, 8262, 8280, 8298, 8316, 8334, 8352, 8370, 8388, 8406, 8424, 8442, 8460, 8478, 8496, 8514, 8532, 8550, 8568, 8586, 8604, 8622, 8640, 8658, 8676, 8694, 8712, 8730, 8748, 8766, 8784, 8802, 8820, 8838, 8856, 8874, 8892, 8910, 8928, 8946, 8964, 8982, 9000, 9018, 9036, 9054, 9072, 9090, 9108, 9126, 9144, 9162, 9180, 9198, 9216, 9234, 9252, 9270, 9288, 9306, 9324, 9342, 9360, 9378, 9396, 9414, 9432, 9450, 9468, 9486, 9504, 9522, 9540, 9558, 9576, 9594, 9612, 9630, 9648, 9666, 9684, 9702, 9720, 9738, 9756, 9774, 9792, 9810, 9828, 9846, 9864, 9882, 9900, 9918, 9936, 9954, 9972, 9990, 10008, 10026, 10044, 10062, 10080, 10098, 10116, 10134, 10152, 10170, 10188, 10206, 10224, 10242, 10260, 10278, 10296, 10314, 10332, 10350, 10368, 10386, 10404, 10422, 10440, 10458, 10476, 10494, 10512, 10530, 10548, 10566, 10584, 10602, 10620, 10638, 10656, 10674, 10692, 10710, 10728, 10746, 10764, 10782, 10800, 10818, 10836, 10854, 10872, 10890, 10908, 10926, 10944, 10962, 10980, 11000, 11020, 11040, 11060, 11080, 11100, 11120, 11140, 11160, 11180, 11200, 11220, 11240, 11260, 11280, 11300, 11320, 11340, 11360, 11380, 11400, 11420, 11440, 11460, 11480, 11500, 11520, 11540, 11560, 11580, 11600, 11620, 11640, 11660, 11680, 11700, 11720, 11740, 11760, 11780, 11800, 11820, 11840, 11860, 11880, 11900, 11920, 11940, 11960, 11980, 12000
- Single output ratio relay PNP or NPN standard on Q12 models
- Light Output: 500 or 1000 mW (0.5 or 1.0 W), depending on model
- Housing available with PFA chemical-resistant jacket (200 psi maximum rated) for use in harsh environments (see Chemical-Resistant Models on page 1)
- Compact 5 mm (0.18 in) housing mounts almost anywhere
- Available explosion-proof for applications with multiple sensors
- LED status indicators for Power On, Output Overload, Signal Received, and Marginal Signal
- Models with black housing are available

WARNING: Not To Be Used for Personnel Protection
Never use this device as a sensing device for personnel protection. Doing so could lead to injury or death. This device does not include the self-checking redundant circuitry necessary for use in personnel safety applications. A sensor failure or malfunction can cause either an energized sensor output condition.



Link to catalog

Link to the Banner website

World-Beam Q12

Banner Engineering, Worldwide leader in process automation and industrial automation

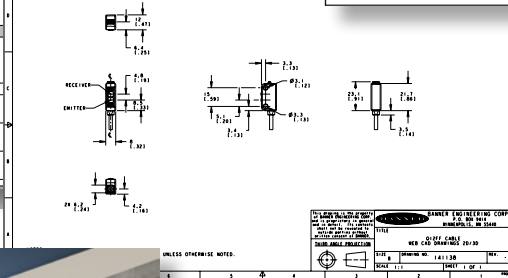
Product Capabilities

World-Beam Q12

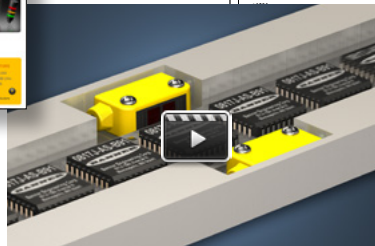
Banner Engineering, Worldwide leader in process automation and industrial automation

Product Capabilities

World-Beam Q12



Link to CAD files



Link to videos



Talk with an app engineer. Get product specs. Order now.

1-888-373-6767 • bannerengineering.com

minneapolis, mn

