



Versatile, Rugged Laser Measurement Sensor

Q4X Analog

Superior Performance: Reliably detects sub-millimeter distance changes.

Versatile

Continuous measurement of **challenging targets** from dark to reflective, out to 300 mm.

Durable

Robust housing rated to IP69K with **FDA-grade stainless steel** resists mechanical impact, over tightening and extreme vibration.

Easy to Use

Simplified user experience with a clear **analog (V or mA) or distance (mm)** readout from the angled four-digit display and easy setup with responsive buttons.



analog

BANNER[®]
more sensors, more solutions

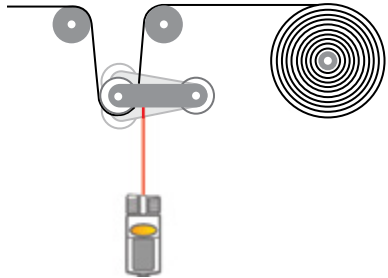




Q4X Laser
Measurement Sensor

Performance

- Solves difficult measurement applications with difficult targets, including black rubber, foam, metal or plastics of any color



Detects sub-millimeter changes in size or position

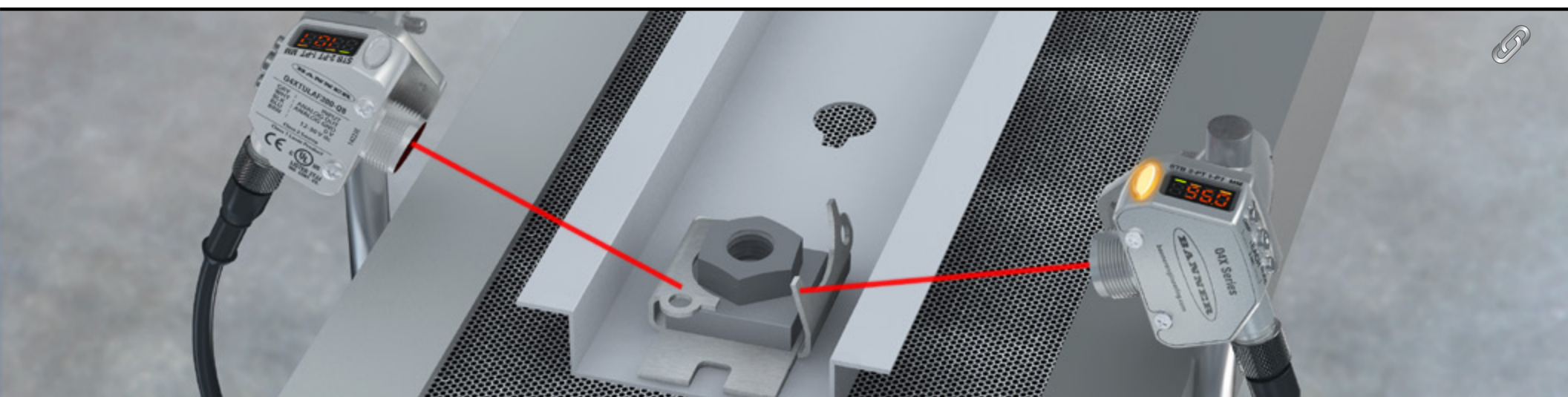
Applications

- Fill level indication (this page)
- Part positioning (opposite page)
- Roll diameter
- Loop control
- Thickness/height verification
- Many other challenging applications





- Angled Four-Digit Display
- Shows distance from sensor to target or analog output
 - Easy to read at all angles
 - Display can be inverted for easy mounting, which allows readability from a variety of angles





Q4X Laser
Measurement Sensor



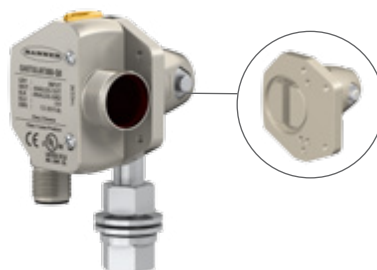
Patent pending

Family	Housing Style	Output*	Mode	Range	Connector
Q4X	T	U	LAF	300	Q8
	T = 18 mm Threaded Barrel	U = 0-10 V I = 4-20 mA	LAF = Laser Adjustable-Field	300 = 25-300 mm 100 = 25-100 mm	Q8 = 5-pin Integral QD <small>QD models require mating cordset</small>

* Some models may not be available at time of printing. Call or check website for the latest model information.

Order Now

Accessories



SMBQ4XFA
includes 3/8" bolt for mounting

SMBQ4XFAM10
includes 10 mm bolt for mounting

SMBQ4XFAM12
clamps directly onto industry standard bracket systems of 1/2" or 12 mm rods



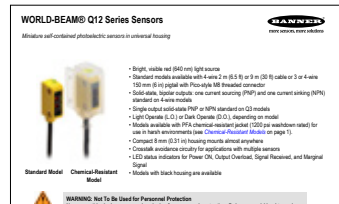
**5-Pin M12/
Euro-Style Cordsets**
Straight connector models listed; for right-angle, add **RA** to the end of the model number (example, **MQDC1-506RA**)

MQDC1-506
2 m (6.5')
MQDC1-515
5 m (15')
MQDC1-530
9 m (30')



Q4X Laser Measurement Sensor

Link to
data sheets



Chemical-Resistant Models

Sensing Mode	Model	Range
4-Way Visible Red	Q12BSCR	1.5 m (4.9 ft)
	Q12ABSCR	
	Q12BBSCR	
Performance based on use of 90% reflective white test card:		
Q12ABPFSR	Q12ABPFSR	13 mm (0.5 in) conf.
Q12BBPFSR	Q12BBPFSR	8 mm (0.3 in)
Q12ABPFSR	Q12ABPFSR	20 mm (0.8 in) conf.
Q12BBPFSR	Q12BBPFSR	14 mm (0.5 in) conf.
Q12ABPFSR	Q12ABPFSR	40 mm (1.6 in) conf.
Q12BBPFSR	Q12BBPFSR	14 mm (0.5 in) conf.

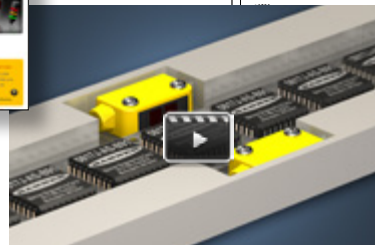
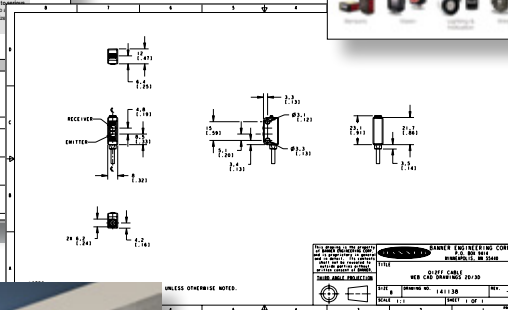


Link to
catalog

Link to the
Banner website



Link to
CAD files



Link to videos

