

**Dalton Gear Company**

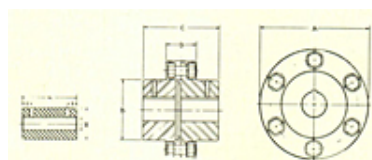
212 Colfax Ave. N.

Minneapolis, MN 55405 US

**Phone:** 612-374-2150 • **Fax:** 612-374-2467**E-Mail:** daltongear@worldnet.att.net**Dalton Model DRC Steel Rigid Couplings**

The Dalton "DRC" RIGID COUPLING is designed for speeds up to 3600 RPM. The shaft size determines the coupling to be used. Extreme care for perfect alignment must be exercised.

Please call for discounts on list prices.



Item #	Min. Bore	Max. Bore	A - Outside Diameter	C - Length	Bolt Size	No. Bolts
DRC25	1/2 Inch	1 Inch	2 1/2 Inch	4 1/2 Inch	None	None
DRC35	1/2 Inch	1 1/4 Inch	3 1/2 Inch	3 Inch	5/16-18 1 Inch Long	4
DRC45	3/4 Inch	1 5/8 Inch	4 1/2 Inch	3 Inch	5/16-18 1 Inch Long	4
DRC60	1 Inch	2 1/4 Inch	6 Inch	3 1/2 Inch	3/8-16 1 Inch Long	5
DRC67	1 1/4 Inch	2 3/4 Inch	6 3/4 Inch	3 3/4 Inch	3/8-16 1-1/4 Inch Long	5
DRC75	1 1/2 Inch	3 1/2 Inch	7 1/2 Inch	4 Inch	3/8-16 1-1/4 Inch Long	6
DRC85	1 3/4 Inch	4 Inch	8 1/2 Inch	4 1/2 Inch	1/2"-13 1-1/2 Inch Long	6
DRC100	2 Inch	5 Inch	10 Inch	5 Inch	1/2"-13 1-1/2 Inch Long	8