

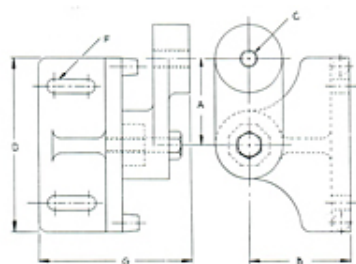
**Dalton Gear Company**

212 Colfax Ave. N.

Minneapolis, MN 55405 US

**Phone:** 612-374-2150 • **Fax:** 612-374-2467**E-Mail:** daltongear@worldnet.att.net**Secondary Adjusting Arm With Angular Base**

- The secondary arm provides for greater tensioning capabilities in that its position on the Angle base is adjustable.
- The secondary arm increases the distance from the mounting surface. This permits the use of idlers with an outside diameter greater than 4-1/2 inches.
- This unit is also made of high strength Ductile iron and is painted with Dalton's special paint to prevent rust.
- Please call for discounts on list prices.



Results 1 - 7 of 7

Item #	A - Pitch	B - Width	C - Thread	D - Height	E - Pitch	F - Slot Width	List Price
1SA-3	1-3/8 Inch	1-5/8 Inch	3/8 Inch	2-1/4 Inch	1-1/2 Inch	1/4 Inch	\$57.00
2SA-4	2-1/4 Inch	2-1/2 Inch	1/2 Inch	4 Inch	2-5/8 Inch	3/8 Inch	\$61.00
2SA-5	2-1/4 Inch	2-1/2 Inch	5/8 Inch	4 Inch	2-5/8 Inch	3/8 Inch	\$61.80
2SA-6	2-1/4 Inch	2-1/2 Inch	3/4 Inch	4 Inch	2-5/8 Inch	3/8 Inch	\$64.60
D2SA-4	2-1/4 Inch	2-1/2 Inch	1/2 Inch	4 Inch	2-5/8 Inch	3/8 Inch	\$61.80
D2SA-5	2-1/4 Inch	2-1/2 Inch	5/8 Inch	4 Inch	2-5/8 Inch	3/8 Inch	\$63.20
D2SA-6	2-1/4 Inch	2-1/2 Inch	3/4 Inch	4 Inch	2-5/8 Inch	3/8 Inch	\$66.60

Results 1 - 7 of 7