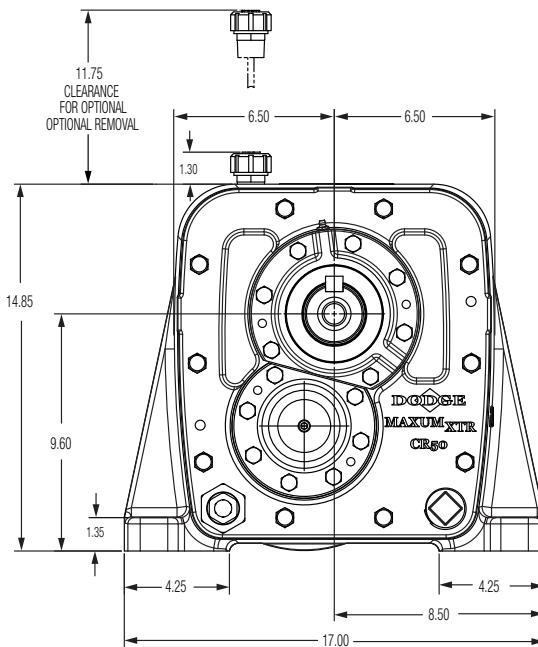
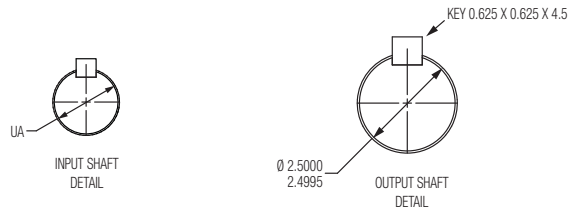
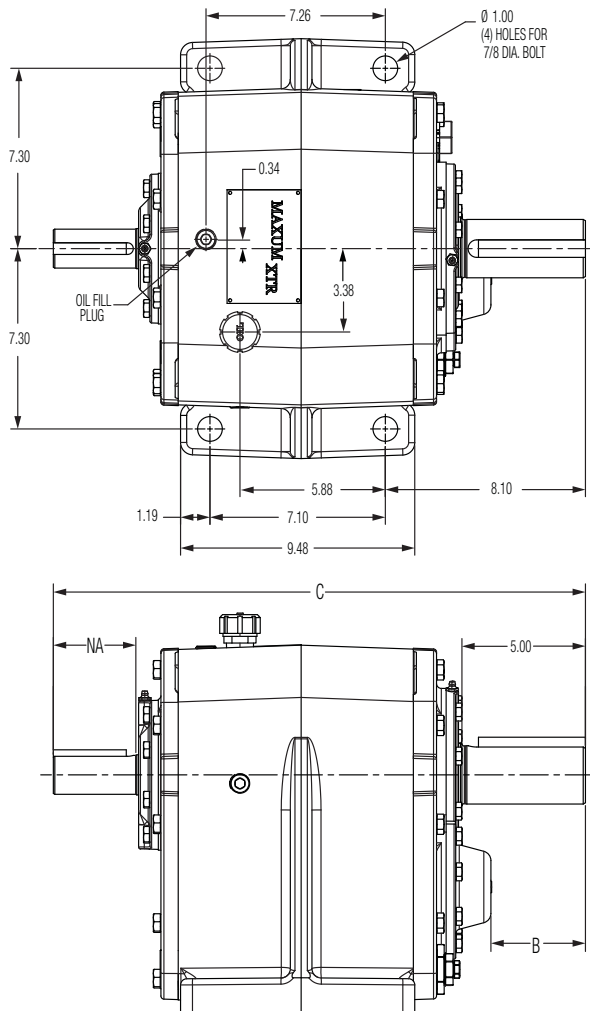




MAXUM XTR Concentric Reducers Reducers Size 50



NOTE: Verify application compatibility and fit of accessories and components.



MAXUM XTR Concentric Reducers Reducers Size 50

Size 50	C	NA		UA	Input Shaft Key			B		Weight (lbs.)
		Without Fan	With Fan		W	H	L	Without Backstop	With Backstop*	
Double Reduction	21.54	3.34	1.65	1.6250 1.6245	0.375	0.375	3.00	3.83	3.65	415
Triple Reduction	21.54	3.25	—	1.2500 1.2495	0.25	0.25	3.00	3.83	3.65	415

* Refer to page 61 for internal backstop dimensions.

Size 50 Part Numbers

	Nominal Ratio	Basic Reducer †
D O U B L E	DCR50 - 2.25	268700
	DCR50 - 2.75	268701
	DCR50 - 3.37	268702
	DCR50 - 4.13	268703
	DCR50 - 5.06	268704
	DCR50 - 6.20	268705
	DCR50 - 7.59	268706
	DCR50 - 9.30	268707
	DCR50 - 11.39	268708
	DCR50 - 13.95	268709
	DCR50 - 17.09	268710
	DCR50 - 20.93	268711
	DCR50 - 25.63	268712
DCR50 - 31.39	268713	
T R I P L E	TCR50 - 38.44	268714
	TCR50 - 47.08	268715
	TCR50 - 57.67	268716
	TCR50 - 70.62	268717
	TCR50 - 86.50	268718
	TCR50 - 105.9	268719
	TCR50 - 129.7	268720
	TCR50 - 158.9	268721
TCR50 - 194.6	268722	

† Ratios 5.06-194.6 are suitable for backstop mounting

Size 50 Accessories ♦ +

Description	Part Number	Weight (lbs)
BACKSTOP (5.06-194.6)+	270002	13
SHAFT DRIVEN FAN (2.25-31.39)	271945	10
SHAFT DRIVEN FAN (2.25-31.39) FOR SCOOPS	271946	11
ELECTRIC FAN 230/460V	273961	39
ELECTRIC FAN 575V	273962	39
HEAT EXCHANGER	273933	55
PITOT TUBE OIL SAMPLING PORT	270893	8
TOP MOTOR MOUNT	270007	110
SLIDE BASE	270008	87

♦ Refer to page 42 for compatibility of accessory combinations

+ For backstops installed at factory, provide direction of output shaft rotation (CW or CCW) as viewed looking toward the output end of the reducer. Consult Baldor for backstops on ratios not listed.

Size 50 Scoop Part Numbers • ♦

	NEMA AC-Motor Frame	Scoop Package PARA-FLEX Cplg.	Scoop Package GRID-LIGN Cplg.	Scoop Package Weights PARA/GRID (lbs)
DOUBLE	182T, 184T	269150	269165	138/132
	213T, 215T	269151	269166	138/132
	254T, 256T	269152	269167	147/137
	284T, 286T	269153	269168	167/158
	324T, 326T	269154	269169	174/170
DOUBLE WITH SHAFT FAN	182T, 184T	269155	269170	148/142
	213T, 215T	269156	269171	148/142
	254T, 256T	269157	269172	157/147
	284T, 286T	269158	269173	177/168
	324T, 326T	269159	269174	184/180
TRIPLE	143T, 145T	269160	269175	134/132
	182T, 184T	269161	269176	138/132
	213T, 215T	269162	269177	138/132
	254T, 256T	269163	269178	143/137
	284T, 286T	269164	269179	167/156

• Scoop package includes scoop, coupling, coupling guard, shaft fan (where indicated) and mounting hardware