

200 Class 18mm Stacklight™

The 200 Class 18mm Stacklight™ is a versatile signaling device that may contain up to five light modules in a single, integrated stack. The lens modules are available with an LED light source, and in red, amber, green, blue, yellow and white. The 18mm is available as a Steady Burn LED device. The lenses are made from a self-extinguishing polycarbonate material and are scratch and impact resistant. There is no sound module available on the 18mm Stacklight™.

The 200 Class 18mm Stacklight™ features an interlocking system for quick assembly without any tools. It is available in industrial gray or basic black and provides solutions for most industrial applications while also meeting machine builder and OEM requirements.

200 Class 18mm Stacklight™ Features

- cULus Listed
- CE approved
- IP54
- Six lens colors
- LED light source
- Steady Burn
- Available in Industrial Gray or Basic Black
- Stackable in any combination up to five total modules
- Quick and simple assembly with NO tools required
- Available in 24VAC/DC
- Operating Temperature -22°F to 122°F (-30°C to 50°C)



200 Class 18mm Stacklight™

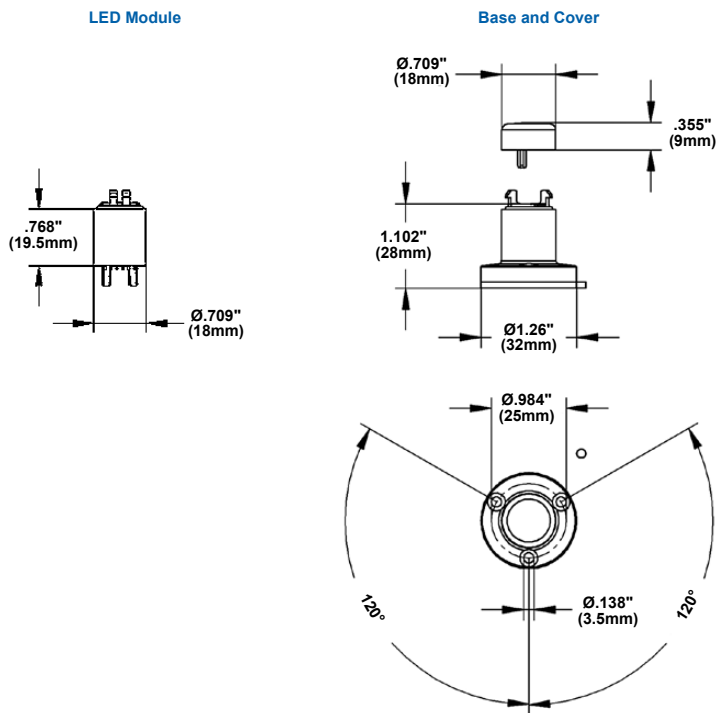
Description	Cat. No.*
Base and Cover - Gray	218BC

Module Type	Cat. No.*	LED Color	Operating Voltage**	Current
200 Class 18mm Modules - Gray	218LEDSB24AD	Blue	24V AC/DC	0.015A
	218LEDSA24AD	Amber	24V AC/DC	0.015A
	218LEDSR24AD	Red	24V AC/DC	0.015A
	218LEDSG24AD	Green	24V AC/DC	0.015A
	218LEDSY24AD	Yellow	24V AC/DC	0.015A
	218LEDSW24AD	White	24V AC/DC	0.015A

*NOTE: Add "B" to end of the catalog number for Basic Black unit.

**AC voltage frequency is 50/60 Hz

Dimensional Drawings



Agency Approvals



9 Farm Springs Road
 Farmington, CT 06032
 1.800.336.4206
 www.edwardssignaling.com

© Copyright 2011 Edwards Signaling

Data Sheet ES001-0119 Issue 1
 Not to be used for installation purposes.
 Page 2 of 2