

The Edwards 105 Series are heavy duty beacons designed for use in industrial applications where a corrosion resistant Type 4X enclosure is required. The housing is manufactured from glass-reinforced thermoplastic polyester resin and incorporates brass hardware. The double fresnel lens is made of polycarbonate.

All light sources are supplied as UL listed component assemblies – ready to be attached to the selected mounting base.

The Edwards 105DHISTC-FJ high intensity strobe is designed for use in compatible fire alarm systems and other applications requiring electrical supervision of signaling circuit field wiring.

All units can be mounted on 3/4" (19mm) NPT conduit using the 105PM attachment. The units can also be surface or wall mounted using the 105BX and 105BM attachments respectively. For indoor applications, may be vertically mounted with lenses facing up or down. For weatherproof installation, it is recommended that the unit be mounted with the lens facing up or with the lens horizontal.

Agency Approvals

- > UL 1638 and UL 1604 Listed
- > UL Listed NEMA Type 4X enclosure
- > UL Listed Class I, Division 2, Groups A, B, C & D; Class II, Division 2, Groups F & G and Class III locations
- > cUL Listed C22.2 No. 205
- > Marine UL Listed
- > UL 1971 Listed Model

105 Series Features

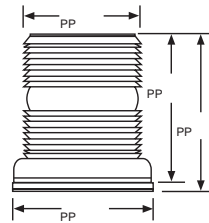
- > Corrosion resistant
- > Six available light sources: Steady-on incandescent, Steady-on LED cluster, Flashing incandescent, Flashing LED cluster, 300,000 peak candlepower 3 joule strobe, 800,000 peak candlepower 8 joule high intensity strobe
- > Three mounting bases: 3/4" (19mm) pipe mount attachment, Outlet box attachment, Wall mounting bracket

AdaptaBeacon® - 105 Series

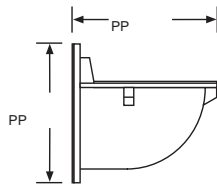
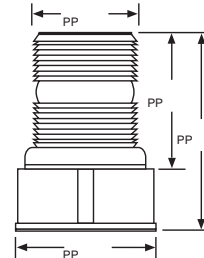


AdaptaBeacon® Adverse Location 105 Series

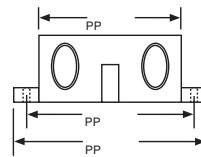
Cat. No's.
105SLED
105FLED
105SINH
105FINH
105ST



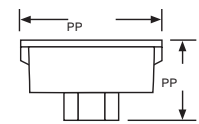
Cat. No's.
105HIST
105DHIST



Cat. No. 105BM Mounting Bracket
(use with 105BX)



Cat. No. 105BX
Outlet Box Attachment



Cat. No. 105PM
Pipe Mount Attachment

| Cat. No. | Module Type | Lamp Ratings | Peak Candlepower | Voltage | Current | Replacement Lamp |
|----------------|--|----------------------------------|--|-----------|---------------|--|
| 105SLED*-G1 | Steady-On LED | 120,000 hours ^{1,2} | Color Dependent | 24V DC | 0.062A | — |
| 105SLED*-N5 | Steady-On LED | 120,000 hours ^{1,2} | Color Dependent | 120V AC | 0.022A | — |
| 105FLED*-G1 | Flashing LED | 100,000 hours ^{1,2} | Color Dependent | 24V DC | 0.062A | — |
| 105FLED*-N5 | Flashing LED | 100,000 hours ^{1,2} | Color Dependent | 120V AC | 0.022A | — |
| 105SINH**-G1 | Steady-On Halogen | 20W, 20,000 hours ^{1,2} | 2839 | 24V DC | 0.8A | 50LMP-20WH or Ind. Trade No. 1692 (Incandescent) |
| 105SINH**-G5 | Steady-On Halogen | 20W, 20,000 hours ^{1,2} | 2839 | 24V AC | 0.8A | 50LMP-20WH or Ind. Trade No. 1692 (Incandescent) |
| 105SINH**-N5 | Steady-On Halogen | 25W, 20,000 hours ^{1,2} | 2198 | 120V AC | 0.2A | 50LMP-25WH or Ind. Trade No. 25T8DC (Incandescent) |
| 105FINH**-G1 | Flashing Halogen | 20W, 20,000 hours ^{1,2} | 2839 | 24V DC | 0.8A | 50LMP-20WH or Ind. Trade No. 1692 (Incandescent) |
| 105FINH**-G5 | Flashing Halogen | 20W, 20,000 hours ^{1,2} | 2839 | 24V AC | 0.8A | 50LMP-20WH or Ind. Trade No. 1692 (Incandescent) |
| 105FINH**-N5 | Flashing Halogen | 25W, 20,000 hours ^{1,2} | 2198 | 120V AC | 0.2A | 50LMP-25WH or Ind. Trade No. 25T8DC (Incandescent) |
| 105ST**-G1 | 3 Joule Strobe | 3,000 hours ³ | 300,000 | 24V DC | 0.3A | 91B-ST |
| 105ST**-N5 | 3 Joule Strobe | 3,000 hours ³ | 300,000 | 120V AC | 0.1A | 92-ST |
| 105ST**-R5 | 3 Joule Strobe | 3,000 hours ³ | 300,000 | 240V AC | 0.02A | 92-ST |
| 105DHISTC-FJ | Fire Alarm (UL 1971) 8 Joule Strobe | 3,000 hours ³ | 26 cd wall (dome out) 24 cd wall (dome down) 26 cd ceiling | 20-30V DC | 1.08 - 0.83 A | 92-ST |
| 105DHIST***-FJ | High Intensity 8 Joule Strobe | 3,000 hours ³ | 800,000 | 20-30V DC | 1.08 - 0.83 A | 92-ST |
| 105HIST**-N5 | High Intensity 8 Joule Strobe | 3,000 hours ³ | 800,000 | 120V AC | 0.1A | 92-ST |
| 105HIST**-R5 | High Intensity 8 Joule Strobe | 3,000 hours ³ | 800,000 | 240V AC | 0.05A | 92-ST |
| 105HIST**-EK | High Intensity 8 Joule Strobe | 3,000 hours ³ | 800,000 | 12-48V DC | 0.05A | 92-ST |

*Lens and light source (LED) color: A - amber, B - blue, G - green, R - red.
**Lens color: A - amber, B - blue, C - clear, G - green, M - magenta, R - red.
***Lens color: A - amber, B - blue, G - green, M - magenta, R - red

¹At nominal operating voltage.

²Projected lamp life based on manufacturer's calculated lamp life @ 65 fpm and 50% duty cycle.

³Strobe tube life @ operating power to 75% efficiency.