



Recessed Roller Plunger With Wire Leads 3008 Series

Applications

Model 3008 "Shorty"

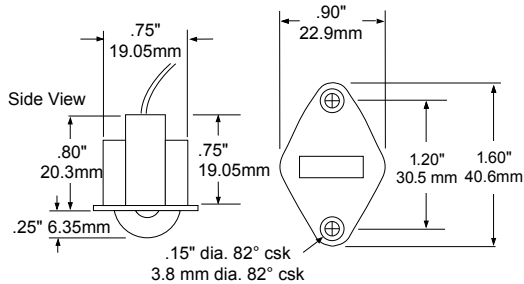
- Short housing (3/4") fits in tight quarters
- Ideal for replacing short mechanical switches
- Flow-through design to ensure operation in dirty environment

- Model 3007
- Versatile; three different mounting configurations
 - Ideal for doors
 - Works as plunger or ball switch
 - Flanges for reliable, positive retention
 - Spacers, mounting screws included

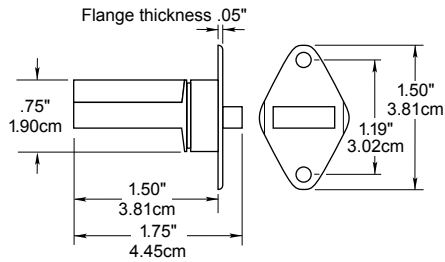
General Specifications

Enclosure	ABS plastic
Temperature Range	-40°F to 150°F (-40°C to 65°C)
Environmental	Contact Housing is made of flame-retardant ABS plastic. Reed switch is protected and held in place by a polyurethane potting material
NEMA Rating	1
Protection Class	IP 62
Response Time	1 msec max.
Life Cycles	100,000 Under Full Load, 10,000,000 Under Dry Circuit
Lead Types/O.D.	#22 wire / 0.05" (0.15cm)
Color Choices	Natural(N), Mahogany(M)
UL Listed	All Models

Model 3008



Model 3007



Order Information

Electrical Specifications

Part Number	Contact ¹ Configuration	Load Rating (AC/DC)	Switching Voltage (AC/DC)	Switching Current (AC/DC)	Contact Resistance	Load Length
3008-M	N.O.	7.5W/VA	100V	0.5A	0.2 Ohms	1'
3007-M	SPDT	3W/VA	30V	0.25A	0.2 Ohms	1'

Warning— Each electrical rating is an individual maximum and cannot be exceeded!

¹ Configuration with plunger out.