



Heavy Duty Power Transformers

88 Series



Cat. No. 88-50



Cat. No. 88-250

Edwards 88 Series Transformers provide low voltage source from 50 to 250 volt amps for all large signaling installations.

Holes provided in transformer housing for surface mounting.

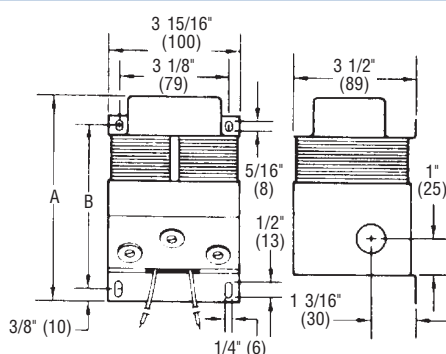
The Edwards 88 Series heavy duty transformers are for heavy duty industrial and commercial applications.

FEATURES

- > Enclosed connections
- > Primary Pigtails
- > Screw terminal connections on secondary

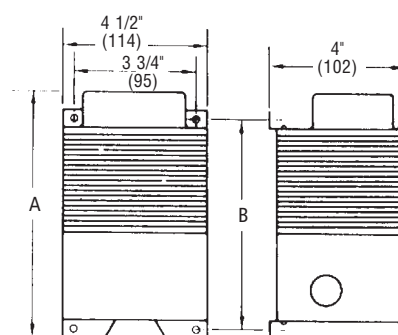
AGENCY APPROVALS

- > UL Listed



88-50, 88-Y50

88-100, 88-Y100



88-250

| Cat. No. | Primary Volts 50/60 Hz | Secondary | | Dimensions | |
|----------|---------------------------|-----------|-----------|------------------|------------------|
| | | Volts | V A | A | B |
| 88-50 | 120V AC | 24 12 | 50 25 | 5 1/2" (140mm) | 4 3/8" (111mm) |
| 88-Y50 | 240V AC | 24 12 | 50 25 | 5 1/2" (140mm) | 4 3/8" (111mm) |
| 88-100 | 120V AC | 24 12 | 100 50 | 5 15/16" (151mm) | 4 11/16" (119mm) |
| 88-Y100 | 240V AC | 24 12 | 100 50 | 5 15/16" (151mm) | 4 11/16" (119mm) |
| 88-250 | 120V AC | 24 | 250 | 7 3/4" (197mm) | 6 5/8" (168mm) |
| | | 20 | 200 | | |
| | | 16 | 160 | | |
| | | 12 | 125 | | |
| | | 8 | 80 | | |
| | | 4 | 40 | | |