



### ELECTRIC CHARACTERISTICS

Nominal voltage	0/500 V <sub>Ac</sub> - 50/60 Hz
Phase to phase test voltage	2300 V <sub>Dc</sub> (2 s)
Phase to ground test voltage	3100 V <sub>Dc</sub> (2 s)
Climatic class	- 40 / +85 °C

RoHS

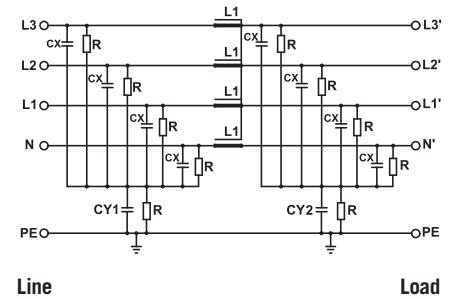
UL1283  
CSA C22.2  
E215863

FIN1740ESM	Rated Current 40°C (50°C)	$\Sigma Cx$ ( $\mu F$ ) $\pm 5\%$	Cy1 (nF) $\pm 5\%$	Cy2 (nF) $\pm 5\%$	L1 (mH) $\pm 10\%$	Power Loss (W)
.010.M	10 (9)	9.6	100	100	1.8	5
.018.M	18 (16)	9.6	100	100	1.2	5
.036.M	36 (32)	9.6	100	100	1.1	18
.072.M	72 (64)	9.6	100	100	1	40
.100.M	100 (90)	9.6	100	100	0.7	102
.135.M	135 (120)	9.6	100	100	0.7	96
.180.M	180 (160)	9.6	100	100	0.6	98

Nominal <3mA  
Worst condition <15mA

Total leakage current at 230 V phase to ground 50 Hz / 40°C

### ELECTRIC DIAGRAM



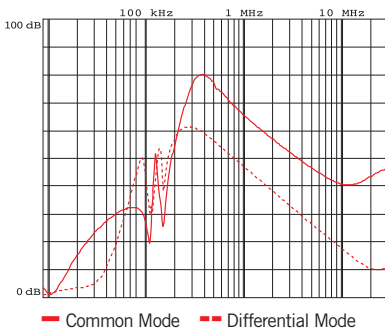
### MECHANICAL DIMENSIONS (mm)

FIN1740ESM	A	B	V	V1	F	H	I	L	N	d	Weight Kg	Case
.010.M	100	130	22.5	16	6.5	153	125	8.5	90	M6	1	1
.018.M	100	130	22.5	16	6.5	153	125	8.5	90	M6	1	1
.036.M	100	130	22.5	16	6.5	153	125	8.5	90	M6	1.1	1
.072.M	125	118	22.5	32.5	6.5	153	128	8.5	50	M6	1.6	2
.100.M	140	180	30	39	6.5	170	140	8.5	65	M10	3.4	3
.135.M	140	180	30	43	6.5	170	140	8.5	65	M10	4.5	3
.180.M	160	200	30	51.5	6.5	170	140	8.5	75	M10	4.8	4

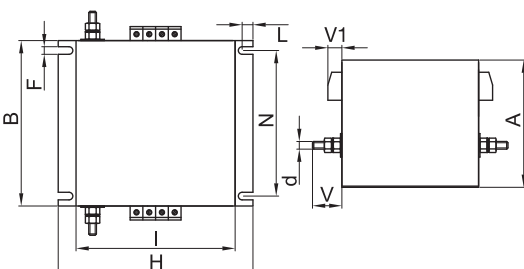
### CONNECTION

Rigid Cable (mm <sup>2</sup> )	Flexible Cable (mm <sup>2</sup> )	Torque (Nm)
0.2 - 10	0.2 - 6	1.2
0.2 - 10	0.2 - 6	1.2
0.2 - 10	0.2 - 6	1.2
0.5 - 16	0.5 - 10	1.8
4 - 25	6 - 35	4.5
10 - 50	10 - 50	4
35 - 95	35 - 95	20

### TYPICAL ATTENUATION



### CASE 1



### CASE 2/3/4

