



ELECTRIC CHARACTERISTICS

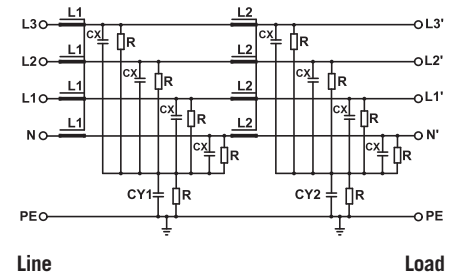
| | |
|------------------------------|----------------------------------|
| Nominal voltage | 0/600 V _{Ac} - 50/60 Hz |
| Phase to phase test voltage | 2400 V _{Dc} (2 s) |
| Phase to ground test voltage | 3200 V _{Dc} (2 s) |
| Climatic class | - 40 / +85 °C |

RoHS

UL1283
CSA C22.2
E215863

| FIN1940 | Rated Current 40°C (50°C) | ΣCx (µF) ± 5% | Cy1 (nF) ± 5% | Cy2 (nF) ± 5% | L1 (mH) ± 10% | L2 (mH) ± 10% | Power Loss (W) |
|---------|------------------------------|------------------|------------------|------------------|------------------|------------------|-------------------|
| .006.M | 8 (6) | 24 | 1000 | 100 | 1.5 | 1.5 | 8 |
| .012.M | 14 (12) | 24 | 1000 | 100 | 1.5 | 1.5 | 10 |
| .016.M | 18 (16) | 80 | 1000 | 100 | 1.4 | 1.4 | 12 |
| .025.M | 28 (25) | 80 | 1000 | 100 | 1.3 | 1.3 | 15 |
| .032.M | 35 (32) | 80 | 1000 | 100 | 1.2 | 1.2 | 23 |
| .042.M | 50 (42) | 80 | 1000 | 100 | 1.1 | 1.1 | 32 |
| .055.M | 63 (55) | 80 | 1000 | 100 | 1.1 | 1.1 | 37 |
| .070.M | 80 (70) | 80 | 1000 | 100 | 1 | 1 | 52 |
| .080.M | 90 (80) | 80 | 1000 | 100 | 1 | 1 | 60 |
| .100.M | 110 (100) | 80 | 1000 | 100 | 0.9 | 0.9 | 92 |
| .115.M | 130 (115) | 80 | 1000 | 100 | 0.8 | 0.8 | 101 |
| .150.M | 175 (150) | 80 | 1000 | 100 | 0.7 | 0.7 | 115 |
| .200.M | 230 (200) | 80 | 1000 | 100 | 0.6 | 0.6 | 120 |

ELECTRIC DIAGRAM



Total leakage current at 230 V phase to ground 50 Hz / 40°C

Nominal <3mA
Worst condition <15mA

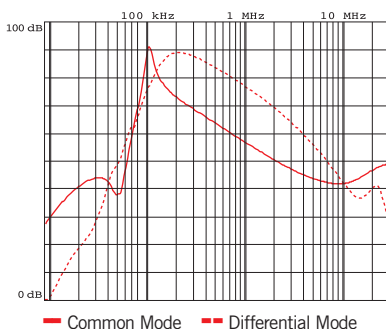
MECHANICAL DIMENSIONS (mm)

| FIN1940 | A | B | V | V1 | F | H | I | L | N | d | Weight Kg |
|---------|-----|-----|------|----|---|-----|-----|----|-----|-----|-----------|
| .006.M | 140 | 60 | 19 | 16 | 6 | 226 | 200 | 7 | 38 | M6 | 1.9 |
| .012.M | 140 | 60 | 19 | 16 | 6 | 226 | 200 | 7 | 38 | M6 | 1.9 |
| .016.M | 177 | 70 | 19 | 16 | 6 | 267 | 237 | 8 | 44 | M6 | 1.9 |
| .025.M | 177 | 70 | 19 | 16 | 6 | 267 | 237 | 8 | 44 | M6 | 2.5 |
| .032.M | 177 | 70 | 19 | 16 | 6 | 267 | 237 | 8 | 44 | M6 | 2.5 |
| .042.M | 177 | 80 | 19 | 34 | 6 | 295 | 265 | 8 | 54 | M6 | 3.7 |
| .055.M | 177 | 80 | 19 | 33 | 6 | 295 | 265 | 8 | 54 | M6 | 3.9 |
| .070.M | 205 | 100 | 28.5 | 38 | 8 | 390 | 340 | 12 | 73 | M10 | 6.2 |
| .080.M | 205 | 100 | 28.5 | 38 | 8 | 390 | 340 | 12 | 73 | M10 | 6.2 |
| .100.M | 205 | 100 | 28.5 | 43 | 8 | 390 | 340 | 12 | 73 | M10 | 7.5 |
| .115.M | 205 | 100 | 28.5 | 43 | 8 | 390 | 340 | 12 | 73 | M10 | 7.5 |
| .150.M | 220 | 130 | 28.5 | 50 | 8 | 420 | 370 | 12 | 103 | M10 | 9.4 |
| .200.M | 220 | 130 | 28.5 | 50 | 8 | 420 | 370 | 12 | 103 | M10 | 9.4 |

CONNECTION

| Rigid Cable (mm ²) | Flexible Cable (mm ²) | Torque (Nm) |
|--------------------------------|-----------------------------------|-------------|
| 0.2 - 10 | 0.2 - 6 | 1.2 |
| 0.2 - 10 | 0.2 - 6 | 1.2 |
| 0.2 - 10 | 0.2 - 6 | 1.2 |
| 0.2 - 10 | 0.2 - 6 | 1.2 |
| 0.2 - 10 | 0.2 - 6 | 1.2 |
| 0.5 - 16 | 0.5 - 10 | 1.8 |
| 0.5 - 16 | 0.5 - 10 | 1.8 |
| 4 - 25 | 6 - 35 | 4.5 |
| 4 - 25 | 6 - 35 | 4.5 |
| 10 - 50 | 10 - 50 | 4 |
| 10 - 50 | 10 - 50 | 4 |
| 35 - 95 | 35 - 95 | 20 |
| 35 - 95 | 35 - 95 | 20 |

TYPICAL ATTENUATION



CASE

