



### ELECTRIC CHARACTERISTICS

Nominal voltage	0/250 V <sub>Ac</sub> - 50/60 Hz
Phase to phase test voltage	1750 V <sub>Dc</sub> (2 s)
Phase to ground test voltage	2150 V <sub>Dc</sub> (2 s)
Climatic class	- 40 / +85 °C

RoHS



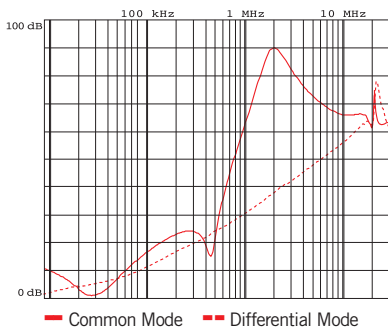
FIN33	Rated Current 40°C	ΣCx (μF) ± 5%	Cy (nF) ± 5%	L1 (mH) ± 10%	Power Loss (W)
.003.F	3	0.082	1.7	4.7	1.5
.006.F	6	0.082	1.7	4.7	2.1
.010.F	10	0.082	1.7	4.7	2.8
.020.F	20	0.2	0.8	3.5	3.8
.040.V	40	0.2	0.7	2.5	4.5
.050.V	50	0.2	0.6	2	5.5
.075.V	75	0.2	0.6	2.1	7

Leakage current at 230 V phase to ground- 50 Hz / 40°C < 1mA

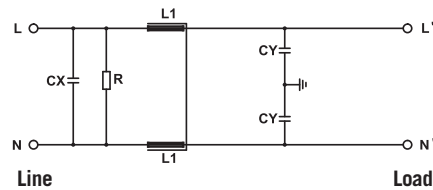
### MECHANICAL DIMENSIONS (mm)

FIN33	A	B	H	N	F	L	I	V	d	Weight Kg	Case
.003.F	20.5	33	66	—	5	56	45	14	6.5	0.13	1
.006.F	20.5	33	66	—	5	56	45	14	6.5	0.13	1
.010.F	20.5	33	66	—	5	56	45	14	6.5	0.2	1
.020.F	39	51.8	84	—	5	74	65	15	6.5	0.18	2
.040.V	40	86.6	107	96	6x4	50/55	100	20	M5	0.18	3
.050.V	50	100	125	115	6x4	120	180	50	M6	0.30	4
.075.V	72	120	152	135	8x4	120	182	30	M8	0.40	5

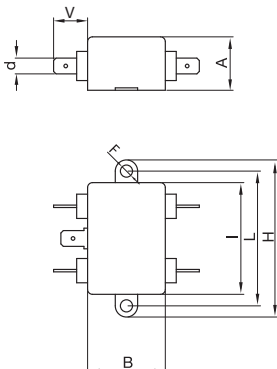
### TYPICAL ATTENUATION



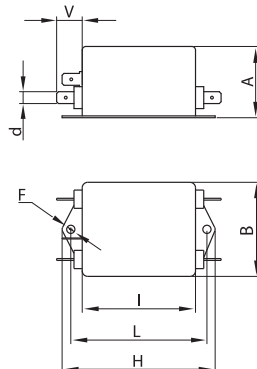
### ELECTRIC DIAGRAM



### CASE 1



### CASE 2



### CASE 3/4/5

