



ELECTRIC CHARACTERISTICS

Nominal voltage	0/250 V _{Ac} - 50/60 Hz
Phase to phase test voltage	1450 V _{Dc} (2 s)
Phase to ground test voltage	2150 V _{Dc} (2 s)
Climatic class	- 40 / +85 °C



FIN70	Rated Current 40°C	C _x (μF)	L ₁ (mH)	C _y (nF)	Power Loss (W)
.001.VF	1	0.047	1	2.2	1
.003.VF	3	0.047	1	2.2	2
.006.VF	6	0.047	1	2.2	3

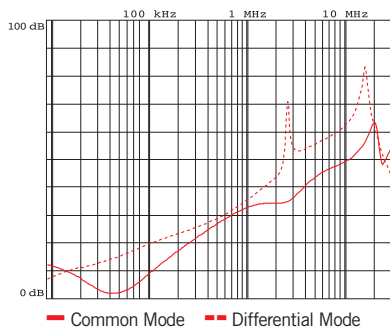
Leakage current at 230 V phase to ground- 50 Hz / 40°C < 1mA

Available on request for medical devices

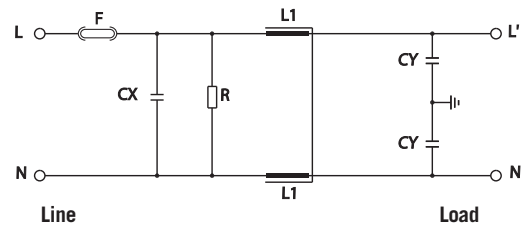
MECHANICAL DIMENSIONS (mm)

FIN70	A	B	C	d	E	F	G	H	I	L	V	Weight Kg	Case
.001.VF	40	33	7	6.5	36	3.5	45	36	29.5	33.5	14	0.12	1
.003.VF	40	33	7	6.5	36	3.5	45	36	29.5	33.5	14	0.12	1
.006.VF	40	33	7	6.5	36	3.5	45	36	29.5	33.5	14	0.12	1

TYPICAL ATTENUATION



ELECTRIC DIAGRAM



MECHANICAL DIMENSIONS (mm)

