



ELECTRIC CHARACTERISTICS

Nominal voltage	0/250 V _{Ac} - 50/60 Hz
Phase to phase test voltage	1450 V _{Dc} (2 s)
Phase to ground test voltage	2150 V _{Dc} (2 s)
Climatic class	- 40 / +85 °C



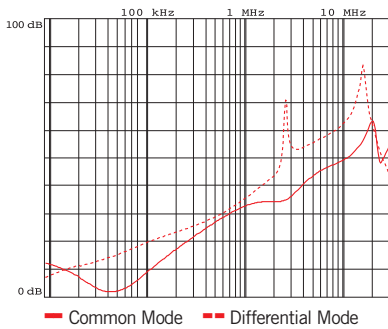
FIN80	Rated Current 40°C	C _x (μF)	L ₁ (mH)	C _y (nF)	Power Loss (W)
.001.VFI	1	0.1	10	2.2	1
.003.VFI	3	0.1	3	2.2	2
.006.VFI	6	0.1	1	2.2	3
.010.VFI	10	0.22	0.5	2.2	5

Leakage current at 230 V phase to ground- 50 Hz / 40°C < 1mA

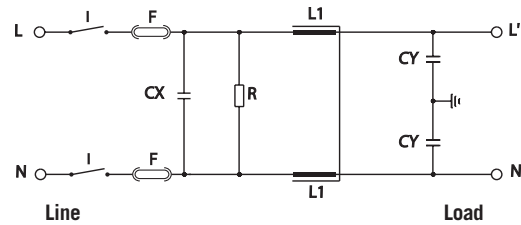
MECHANICAL DIMENSIONS (mm)

FIN80	A	B	C	d	E	F	G	H	I	L	V	Weight Kg	Case
.001.VF	39	61	6	6.5	50	3.5	65	40	30	62	14	0.2	1
.003.VF	39	61	6	6.5	50	3.5	65	40	30	62	14	0.2	1
.006.VF	39	61	6	6.5	50	3.5	65	40	30	62	14	0.2	1
.010.VF	39	61	6	6.5	50	3.5	65	40	30	62	14	0.2	1

TYPICAL ATTENUATION



ELECTRIC DIAGRAM



MECHANICAL DIMENSIONS (mm)

