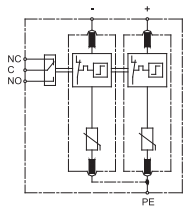
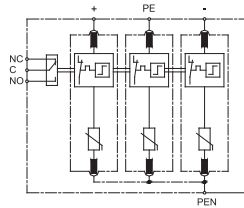
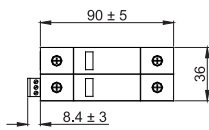
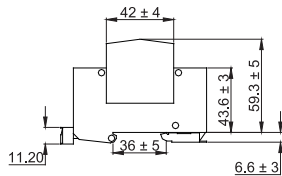


The Enerdoor surge arrester FINPRS series provides advanced surge protection for common mode and common mode + differential mode DC surge. This device is designed for maximum discharge of 50 kA, meets the UL 1449 3<sup>rd</sup> edition and IEC61643-11:2011 Standards, and includes a visual and remote contact indicator.

**GENERAL CHARACTERISTICS**


Class category IEC/VDE	II / C
Operating temperature range	-40°C + 80°C
Operating humidity range	0~90%
Response time	L-N ≤25 ns
Backup fuse (only required if not in the main)	125Amps gR/gPV
Enclosure material	Thermoplastic, UL94 V-0
Mounting	35mm DIN rail according to the EN50022/DIN46277-3 Standard
Max size of connecting wire	Single-strand 35mm <sup>2</sup> (or # 2AWG) Multi-strand 25mm <sup>2</sup> (or # 4AWG)
Remote alarm contact type	Isolated form C
Switching capability Un/In	AC: 250V/0.5A DC: 250V/0.1A
Max size of connecting wire	Max 1.5mm <sup>2</sup> (or #16AWG)

FINPRS	Nominal Voltage Vdc	Max Continuous Operating Vdc	Nominal Discharge (In, KA) 8/20		Voltage Protection Rated (kV)			Case	
			L-N	L-N	@In	@VPR	L-N@MLV	Electrical	Mechanical
.500-M-CS	500	550	20	50	<2.0	<1.5	<2.4	1	1
.600-M-CS	600	745	20	50	<2.5	<1.8	<2.8	1	1
.600-M-CDS	600	700	20	50	<2.8	<1.8	<4.2	2	2
.750-M-CDS	750	840	20	50	<3.0	<2.0	<4.4	2	2
.1000-M-CDS	1000	1120	20	50	<4.0	<3.0	<4.8	2	2
.1200-M-CDS	1200	1490	20	50	<5.0	<3.6	<5.6	2	2

**ELECTRICAL DIAGRAM**
**SCHEMATIC 1**

**SCHEMATIC 2**

**MECHANICAL DIMENSIONS (mm)**
**CASE 1**

**CASE 2**
