

### LF1B-N Series

Control Panels • Industrial Machines • Commercial Display Cases

#### Key features

The LF1B-N series LED light strips are slim and perfect for applications where space is a concern. They come in six different lengths and six distinct colors, making them a very flexible lighting solution.

- Compact design: 27.5mm wide, 16mm high, and 134 to 1,080mm long
- 6 Colors: cool white, warm white, yellow, red, blue, green
- All units come standard with 3 meter connection cables
- 2 Cover options: clear, white
- IP65 degree of protection (waterproof, dustproof), suitable for use in wet locations



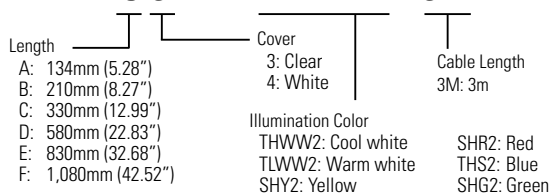
#### Part Numbers

Illumination Color	Cool White	Warm White	Yellow	Red	Blue	Green
Appearance						
LF1B-NA (134mm)	LF1B-NAⓄP-2THWW2-3M	LF1B-NAⓄP-2TLWW2-3M	LF1B-NAⓄP-2SHY2-3M	LF1B-NAⓄP-2SHR2-3M	LF1B-NAⓄP-2THS2-3M	LF1B-NAⓄP-2SHG2-3M
LF1B-NB (210mm)	LF1B-NBⓄP-2THWW2-3M	LF1B-NBⓄP-2TLWW2-3M	LF1B-NBⓄP-2SHY2-3M	LF1B-NBⓄP-2SHR2-3M	LF1B-NBⓄP-2THS2-3M	LF1B-NBⓄP-2SHG2-3M
LF1B-NC (330mm)	LF1B-NCⓄP-2THWW2-3M	LF1B-NCⓄP-2TLWW2-3M	LF1B-NCⓄP-2SHY2-3M	LF1B-NCⓄP-2SHR2-3M	LF1B-NCⓄP-2THS2-3M	LF1B-NCⓄP-2SHG2-3M
LF1B-ND (580mm)	LF1B-NDⓄP-2THWW2-3M	LF1B-NDⓄP-2TLWW2-3M	LF1B-NDⓄP-2SHY2-3M	LF1B-NDⓄP-2SHR2-3M	LF1B-NDⓄP-2THS2-3M	LF1B-NDⓄP-2SHG2-3M
LF1B-NE (830mm)	LF1B-NEⓄP-2THWW2-3M	LF1B-NEⓄP-2TLWW2-3M	LF1B-NEⓄP-2SHY2-3M	LF1B-NEⓄP-2SHR2-3M	LF1B-NEⓄP-2THS2-3M	LF1B-NEⓄP-2SHG2-3M
LF1B-NF (1,080mm)	LF1B-NFⓄP-2THWW2-3M	LF1B-NFⓄP-2TLWW2-3M	LF1B-NFⓄP-2SHY2-3M	LF1B-NFⓄP-2SHR2-3M	LF1B-NFⓄP-2THS2-3M	LF1B-NFⓄP-2SHG2-3M

In place of Ⓞ insert 3 for clear cover and 4 for white cover.

#### Part Number Structure (use for interpreting part numbers only)

### LF1B - NC 3 P - 2 THWW2 - 3M



#### Accessory



Item	Mounting Bracket- Adjustable Angle
Part No.	LF9Z-1MB1
Material	Stainless Steel

1. 1 pair, Left and Right.
2. Not applicable to LF1B-ND.

Specifications

LED Optical Specifications

Illumination Color	Cool White		Warm White		Yellow		Red		Green		Blue		
Cover	Clear	White	Clear	White	Clear	White	Clear	White	Clear	White	Clear	White	
Color Temperature/ Dominant Wavelength (typ.)	5,500K		2,900K		590nm		620nm		525nm		455nm		
Reference Brightness (typ.) at 0.5m	LF1B-NA	90lx	80lx	60lx	55lx	20lx	18lx	20lx	18lx	30lx	27lx	10lx	9lx
	LF1B-NB	220lx	200lx	145lx	130lx	40lx	36lx	40lx	36lx	60lx	55lx	20lx	18lx
	LF1B-NC	400lx	360lx	250lx	225lx	75lx	65lx	75lx	65lx	110lx	100lx	30lx	27lx
	LF1B-ND	660lx	600lx	455lx	410lx	125lx	110lx	125lx	110lx	190lx	170lx	50lx	45lx
	LF1B-NE	820lx	740lx	560lx	500lx	160lx	145lx	160lx	145lx	260lx	235lx	60lx	55lx
	LF1B-NF	935lx	850lx	620lx	555lx	180lx	160lx	180lx	160lx	300lx	270lx	80lx	70lx

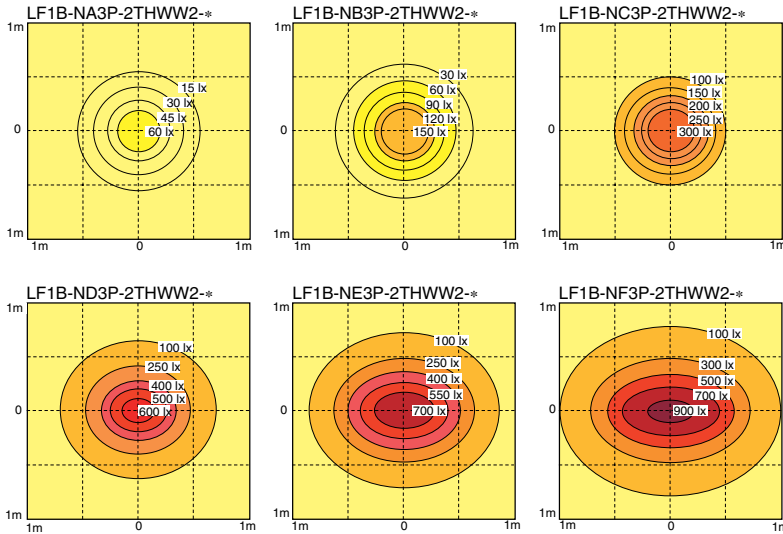
LED modules and illumination units may vary in illumination colors and brightness.

General Specifications

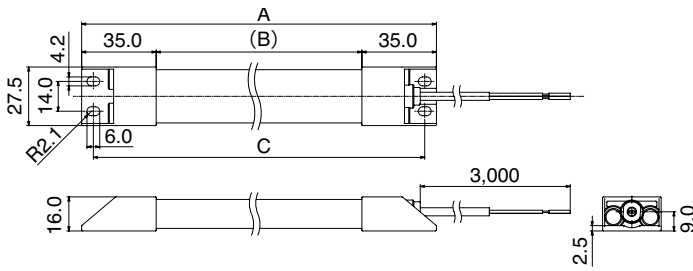
Model		LF1B-NA (134mm)	LF1B-NB (210mm)	LF1B-NC (330mm)	LF1B-ND (580mm)	LF1B-NE (830mm)	LF1B-NF (1,080mm)
Rated Voltage		24V DC (operating voltage range: 21.6 to 26.4V)					
Input Current (typ.) (at the rated current)	cool white/warm white/blue	60mA	120mA	180mA	360mA	540mA	720mA
	red/yellow/green	40mA	80mA	120mA	240mA	360mA	480mA
Power Consumption (typ.) (at the rated voltage)	cool white/warm white/blue	1.5W	2.9W	4.4W	8.7W	13.0W	17.3W
	red/yellow/green	1.0W	2.0W	2.9W	5.8W	8.7W	11.6W
Insulation Resistance		100MΩ minimum (500V DC megger)					
Dielectric Strength		1,000V AC, 1 minute (between live and dead parts)					
Vibration Resistance (damage limits)		Frequency: 5 to 55Hz, Amplitude 0.5mm Acceleration 60m/s <sup>2</sup> (6G), 2 hours each in 3 axes			Frequency: 5 to 55Hz, Amplitude 0.17mm Acceleration 20m/s <sup>2</sup> (2G), 2 hours each in 3 axes		
Shock Resistance (damage limits)		1,000m/s <sup>2</sup> (100G), 5 shocks each in 6 axes			300m/s <sup>2</sup> (30G), 5 shocks each in 6 axes		
Operating Temperature		-30 to +55°C (no freezing)					
Operating Humidity		45 to 85% RH (no condensation)					
Storage Temperature		-35 to +70°C (no freezing)					
Operating Atmosphere		No corrosive gases					
Life (Note)		40,000 hours (Ta = 25°C) (The total illumination life in which the brightness maintains a minimum of 70% of the initial value.)					
Degree of Protection		IP65 (IEC 60529)					
Material		Cover: polycarbonate, End cover/cable gland: polyamide, Wire: PVC (24AWG)					
Weight (approx.)		95g	125g	165g	255g	430g	740g

1. LED life depends on the operating environment.

**Brilliance Distribution at 0.5m (reference value)**



**Dimensions (mm)**



**Dimension Table**

Model	A		B		C	
	mm	inch	mm	inch	mm	inch
LF1B-NA	134	5.28	64	2.52	123	4.84
LF1B-NB	210	8.27	140	5.51	199	7.83
LF1B-NC	330	12.99	260	10.24	319	12.56
LF1B-ND	580	22.83	510	20.08	569	22.40
LF1B-NE	830	32.68	760	29.92	819	32.24
LF1B-NF	1080	42.52	1010	39.76	1069	42.09