

LF2B Series

Control Panels • Industrial Equipment • Commercial Products

Key features

Wide range of input voltages (100 - 240V AC) for commercial applications, and 12/24V DC are available for battery or industrial usage. Slim units can be used in many applications and installations where space is limited. Rated IP65 (protection from water and dust), LF2B is great for environments where there is water spray.

- Slim units: 40mm wide x 29mm high
- One-step installation in a narrow space is possible when using mounting brackets
- Five Lengths (210/330/580/830/1,080mm) are offered to meet length requirements and illumination coverages
- Bright and clear white LED illuminates the shapes and colors of target objects
- Two covers: clear or white



*UL applies for DC units only.

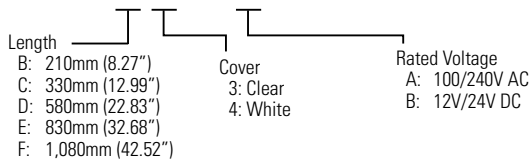
Part Numbers

Illumination Color	White			
	Clear Cover		White Cover	
Rated Voltage	100 - 240V AC	12V/24V DC	100-240V AC	12V/24V DC
LF2B-B (210mm)	LF2B-B3P-ATHWW2-1M	LF2B-B3P-BTHWW2-1M	LF2B-B4P-ATHWW2-1M	LF2B-B4P-BTHWW2-1M
LF2B-C (330mm)	LF2B-C3P-ATHWW2-1M	LF2B-C3P-BTHWW2-1M	LF2B-C4P-ATHWW2-1M	LF2B-C4P-BTHWW2-1M
LF2B-D (580mm)	LF2B-D3P-ATHWW2-1M	LF2B-D3P-BTHWW2-1M	LF2B-D4P-ATHWW2-1M	LF2B-D4P-BTHWW2-1M
LF2B-E (830mm)	LF2B-E3P-ATHWW2-1M		LF2B-E4P-ATHWW2-1M	
LF2B-F (1,080mm)	LF2B-F3P-ATHWW2-1M		LF2B-F4P-ATHWW2-1M	

DC12V/24V Length: B (210mm), C (330mm), D (580mm) only

Part Number Structure (use for interpreting part numbers only)

LF2B - C 3 P - ATHWW2 - 1M



DC12V/24V Length: B (210mm), C (330mm), D (580mm) only

Accessories

Item	Part Number	Remarks
Mounting Bracket (U-shape)	LF9Z-1SB21	Comes with the product (see Note below)
Mounting Bracket (L-shape)	LF9Z-1SB22	Order separately

LF2B-B and -C includes 2 brackets each; LF2B-E 3 brackets, and LF2B-F 4 brackets.

Specifications

LED Optical Specifications

Model	LF2B-B (210mm)		LF2B-C (330mm)		LF2B-D (580mm)		LF2B-E (830mm)		LF2B-F (1,080mm)	
Illumination Color	White									
Color Temperature	5,500K									
Luminous Flux (typ.)	180lm		360lm		720lm		1,080lm		1,440lm	
Cover	Clear	White	Clear	White	Clear	White	Clear	White	Clear	White
Reference Illuminance (typ.) at 0.5m directly below	230lx	215lx	425lx	390lx	710lx	645lx	930lx	835lx	1,160lx	1,040lx

LED modules and illumination units may vary in illumination colors and illuminance.

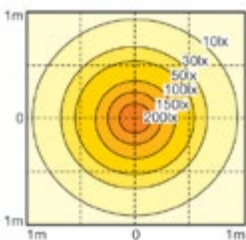
General Specifications

Model	LF2B-B (210mm)	LF2B-C (330mm)	LF2B-D (580mm)	LF2B-E (830mm)	LF2B-F (1,080mm)	
Rated Voltage	100-240V AC 50/60Hz (Voltage range: 90-264V AC) 12V/24V DC (Voltage range: 10.8-30V DC)					
Input Current (typical) (at the rated voltage) ¹	AC100-240V AC	33mA	67mA	96mA	149mA	226mA
	12V/24V DC	215mA	409mA	880mA	-	-
Rated Power (at the rated voltage)	100-240V AC	3.8W	7.5W	9.2W	14.3W	21.8W
	12V/24V DC	2.6W	4.9W	10.6W	-	-
Insulation Resistance	100MΩ minimum (500V DC megger)					
Dielectric Strength	100-240V AC	2,000V AC			-	-
	12V/24V DC	1,000V AC			-	-
Vibration Resistance	Frequency 5 - 55Hz, Amplitude 0.17mm, speed acceleration 20m/s ² , 3 directions, 2 hours each					
Shock Resistance	300m/s ² , 6 directions, 5 times each					
Operating Temperature	-30 to +55°C (no freezing)					
Operating Humidity	45 to 85% RH (no condensation)					
Storage Temperature	-35 to +70°C (no freezing)					
Operating Atmosphere	No corrosive gases					
Life ²	40,000 hours (Ta = 25°C) (The total illumination life in which the brightness maintains a minimum of 70% of the initial value.)					
Degree of Protection	IP65 (IEC 60529)					
Material	Front Cover: Polycarbonate Resin; End Cover/Cable Gland: Polyamide Resin; Cable: PVC sheathing (24AWG)					
Weight (approx.)	100-240V AC	200g	255g	400g	520g	645g
	12V/24V DC	175g	235g	370g	-	-

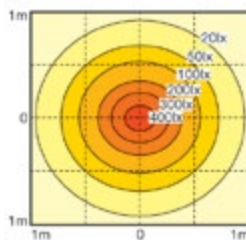
1. 100V AC input for 100 - 240V AC; 12V DC input for 12V/24V DC. 2. LED life is dependent on the operating environment and conditions.

Illuminance Charts (Clear light at 0.5m)

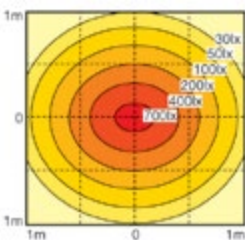
LF2B-B (210mm)



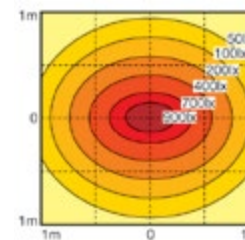
LF2B-C (330mm)



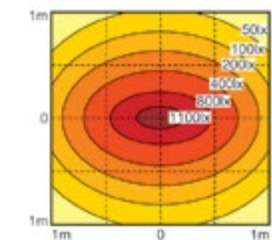
LF2B-D (580mm)



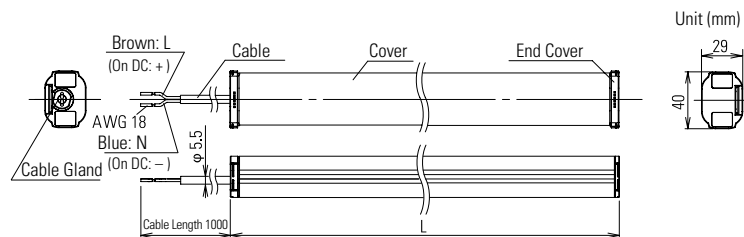
LF2B-E (830mm)



LF2B-F (1,080mm)



Dimensions (mm)



Dimension Table

Part Number	L (mm)	Inch
LF2B-B□P-◇THWW2-1M	210	8.27
LF2B-C□P-◇THWW2-1M	330	12.99
LF2B-D□P-◇THWW2-1M	580	22.83
LF2B-E□P-◇THWW2-1M	830	32.68
LF2B-F□P-◇THWW2-1M	1,080	42.52