

FEN20 Start-up Guide

Date: 12.15.2014
Version: 1.4



Table of Contents

Table of Contents	1
About This Guide	2
Required Parts	3
Hardware	3
Software	3
FEN20 Modules	4
Introduction.....	4
Connection Diagrams.....	4
LED Diagnostics.....	5
IO and Configuration Data Map.....	6
Setting up the IP Address.....	7
<i>Default IP Address</i>	7
<i>Address Switches</i>	7
<i>BOOTP/DHCP Mode (300/400)</i>	8
<i>PGM-DHCP Mode (600)</i>	9
<i>PGM Mode (500)</i>	9
<i>RESTORE Mode (0)</i>	13
<i>RECOVERY Mode (900)</i>	13
EtherNet/IP Configuration	14
FEN20 Configuration using EDS Files	14
<i>Configure User Interface</i>	15
<i>Create RSLogix5000 Project</i>	16
<i>Install EDS Files</i>	17
<i>Configure FEN20-16DXP</i>	19
<i>Module Definition Data Format</i>	23
<i>Communication RPI, Multicast / Unicast</i>	24
<i>Input, Output and Configuration Data Tags</i>	25
<i>FEN20 Profile Info</i>	27
FEN20 Configured as Ethernet Generic Device	28
<i>Create a New RSLogix5000 Project</i>	28
<i>Add New Device</i>	29
<i>Configuration Assembly Data</i>	31
<i>Input Only Connection Configuration</i>	32
<i>Listen Only Connection Configuration</i>	33
<i>FEN20 and DLR Network</i>	34
<i>FEN20 DLR features</i>	34
<i>FEN20 and QC startup</i>	35
<i>The Quick Connect Sequence</i>	35
<i>Ethernet port setup</i>	35
<i>Enable QC</i>	36
<i>Disable QC</i>	36
<i>Reset to factory default</i>	36
<i>QC startup time</i>	36
PROFINET Configuration	37
Setup	37
<i>GE Proficy Machine Edition Setup</i>	37
<i>IP Addressing</i>	40
<i>Installing GSD / GSDML Files in the Hardware Configuration</i>	42
Adding a Profinet Device onto the Network	44
Modbus TCP Configuration	48
Setup	48
Setting Up the VT250	49

About This Guide

This guide will show the how to set the IP address on an FEN20 device. It will also show the user how to configure the FEN20 devices using EtherNet/IP, Profinet, and Modbus TCP configurations.

Required Parts

Hardware

FEN20-4DIP-4DXP - Multiprotocol 4 DI, 4 DI/DO slave
FEN20-16DXP - Multiprotocol 16 DI/DO slave
VT250-57x-L7-IPM – Turck programmable HMI. (Note: Any VT250 model can be used following the same steps)
RJ45-RJ45-1M, Ethernet cables
SE-44X-E924 – 9 Port Unmanaged Ethernet Switch
24V Power supply
Any Digital Input
Any Digital Output

Software

Windows 7 or Windows XP
Pactware / IO Assistant 3+
CoDeSys V3.5 SP1
Turck IP address tool
RS Logix 5000
RS Linx
GE Proficy Machine Edition [Turck GSD\(ML\) Files](#)

EDS and GSD Files

Some network stations require "driver" files. These files are used in the master configuration software to tell the master what stations and parameters to use on the network. For DeviceNet the files have an EDS extension. For Profibus they are GSD. Please enter a part number to search for the EDS or GSD file.

[Download all EDS Files \(Zip\)](#)

[Download all GSD Files \(Zip\)](#)

You may also search for individual files through our general [Part and ID number search](#).

FEN20 Modules

Introduction

FEN20-16DXP is a multiprotocol communication adapter which supports following networking standards:

- EtherNet/IP
- PROFINET
- Modbus TCP/IP

The factory default “out of the box” setting is that all communication protocols are enabled. After power-up, a multiprotocol device is listening on all necessary ports to detect on which kind of network it is used.

The “Active Fieldbus Protocol” is defined as the first protocol to do one of the following actions:

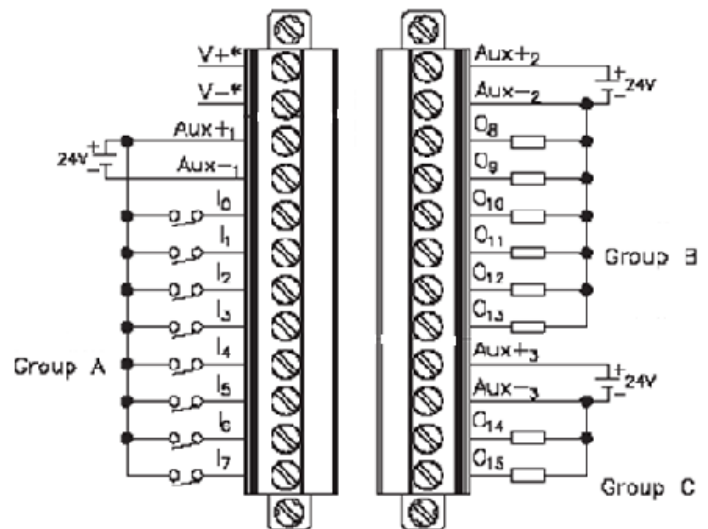
- EtherNet/IP: Establish a Class 1 Exclusive Owner connection to device.
- PROFINET RT: Connect request.
- Modbus TCP: Write to Output Register Range.

The Configuration Guide describes device features and configuration procedure in the EtherNet/IP environment.

Connection Diagrams

FEN20-16DXP connection diagrams

- FEN20-16DXP wiring



- V1+ will have the following functions
 - Station power and Group A of IOs
 - Provide 700mA to Vaux1+
 - It is galvanically isolated from groups B and C
- V2+ will have the following functions
 - Power for Group B
 - It is galvanically isolated from groups A and C
- V3+ will have the following functions
 - Power for Group C
 - It is galvanically isolated from groups A and B

LED Diagnostics

- LED Status
 - I/O
 - IO0 – IO15
 - Solid Green: Input Responded, Output on
 - Off: Input not asserted, output off
 - BUS
 - Solid Green: Active connection to master
 - Flashing Green: Ready
 - Solid Red: ACD or bit set in Status word
 - Flashing Red: Blink/Wink command active
 - Off: No power supplied
 - ETH1/ETH2
 - Solid Green: Ethernet Link (100 Mbps)
 - Flashing Green: Ethernet communication (100 Mbps)
 - Solid Yellow: Ethernet Link (10Mbps)
 - Flashing Yellow: Ethernet communication (10 Mbps)
 - Off: No Ethernet Link

IO and Configuration Data Map

EtherNet/IP IO data map consists of:

- Produced (input) data: 5 x UINT (16-bit)
- Consumed (output) data: 2 x UINT (16-bit)
- Configuration data: 16 x USINT (8-bit)

FEN20-16DXP																
Input Map	Bit 15	Bit 14	Bit 13	Bit 12	Bit 11	Bit 10	Bit 9	Bit 8	Bit 7	Bit 6	Bit 5	Bit 4	Bit 3	Bit 2	Bit 1	Bit 0
Word 0							UB low		UL low							Diag Warn
Word 1	I-16	I-15	I-14	I-13	I-12	I-11	I-10	I-9	I-8	I-7	I-6	I-5	I-4	I-3	I-2	I-1
Word 2			EC 5	Reserved												EM 0
Word 3	OSC 8	OSC 7	OSC 6	OSC 5	OSC 4	OSC 3	OSC 2	OSC 1								IGS
Word 4	Reserved								OSC 16	OSC 15	OSC 14	OSC 13	OSC 12	OSC 11	OSC 10	OSC 9
Output Map	Bit 15	Bit 14	Bit 13	Bit 12	Bit 11	Bit 10	Bit 9	Bit 8	Bit 7	Bit 6	Bit 5	Bit 4	Bit 3	Bit 2	Bit 1	Bit 0
Word 0	Reserved															
Word 1	O-16	O-15	O-14	O-13	O-12	O-11	O-10	O-9	O-8	O-7	O-6	O-5	O-4	O-3	O-2	O-1

Abbreviations:

- I1...I16: Input state
- O1...O16: Output state
- DiagWarn: Summarized diagnostic warning
- UI: UI voltage too low error
- Ub: Ub voltage too low error
- EM0: Summarized diagnostics mod 0
- IGS: Input group status error
- OSC1...16: Output status O1 – O16 short-circuit
- QC QuickConnect

FEN20-16DXP Configuration Assembly Data								
	Bit 7	Bit 6	Bit 5	Bit 4	Bit 3	Bit 2	Bit 1	Bit 0
Byte 0	Reserved							
Byte 1								
Byte 2								
Byte 3								
Byte 4								
Byte 5								
Byte 6								
Byte 7								
Byte 8								
Byte 9	Reserved							QC
Byte10-15	Reserved							

Setting up the IP Address

The general procedure for IP address setup is:

- Set rotary switches to desired position
- Cycle (reset) power to the station
- Run IP address server to assign IP address
- Set address switches to rotary mode or PGM mode
- Cycle power to the station

When address switches are in rotary mode, the last octet may be dialed in 1-254 range.

Default IP Address

The default IP address is:

- IP-address 192.168.1.254
- Subnet mask 255.255.255.0
- Default gateway 192.168.1.1

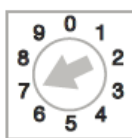
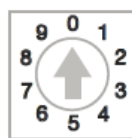
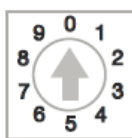
To reset IP address to default, set address switches to 0 and reset device power.

Address Switches

FEN20 devices have three rotary switches marked as follows:

- x100 sets the last digit of IP address to a 100's value
- x10 sets the last digit of IP address to a 10's value
- x1 sets the last digit of IP address to a 1's value

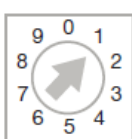
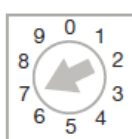
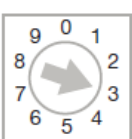
Switch position determines either address or device mode of operation as follows:

			000: 192.168.1.254 1 - 254: static rotary 300: BootP 400: DHCP 500: PGM 600: PGM-DHCP 700: PROFINET
x 100	x 10	x 1	

When using the static rotary mode, the last octet of the module's IP address can be set via the rotary coding-switches on the module.

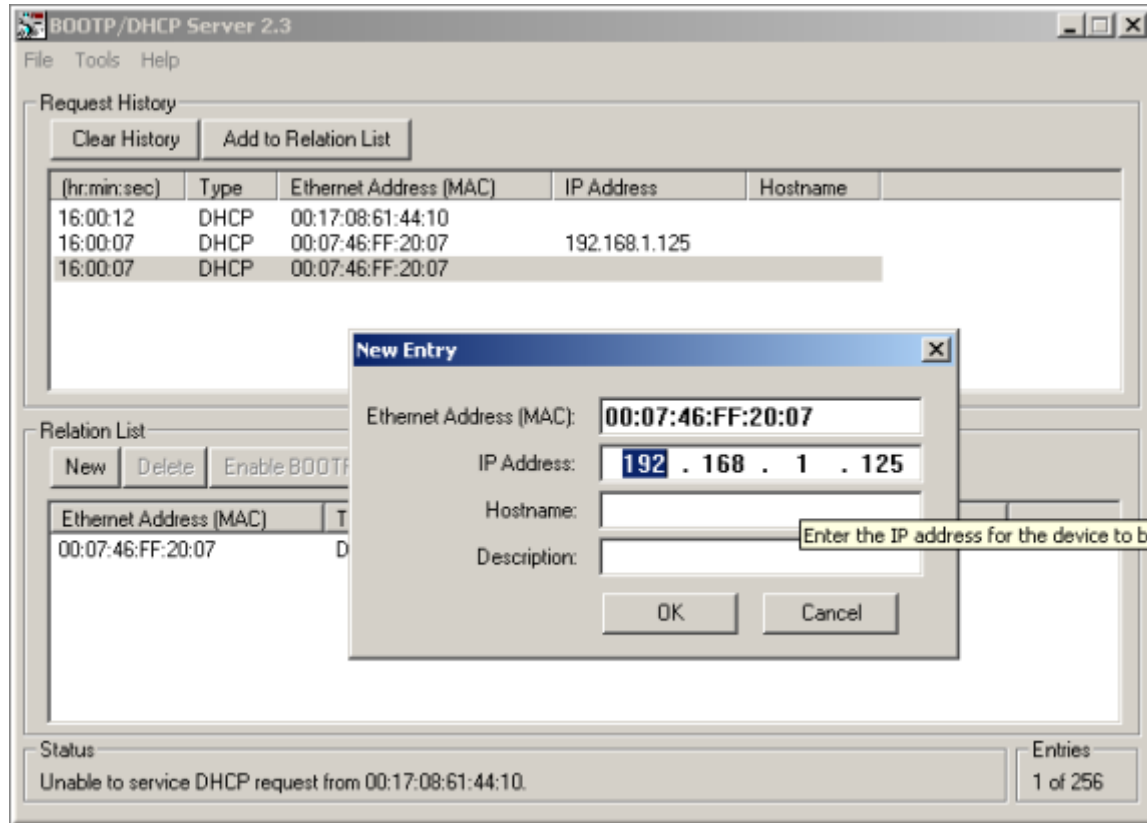
Address range is 1 to 254. Addresses 0 and 255 are reserved and cannot be used.

Following example shows the last octet set to of address xx.xxx.xxx.**173**

			000: 192.168.1.254 1 - 254: static rotary 300: BootP 400: DHCP 500: PGM 600: PGM-DHCP 700: PROFINET
x 100	x 10	x 1	

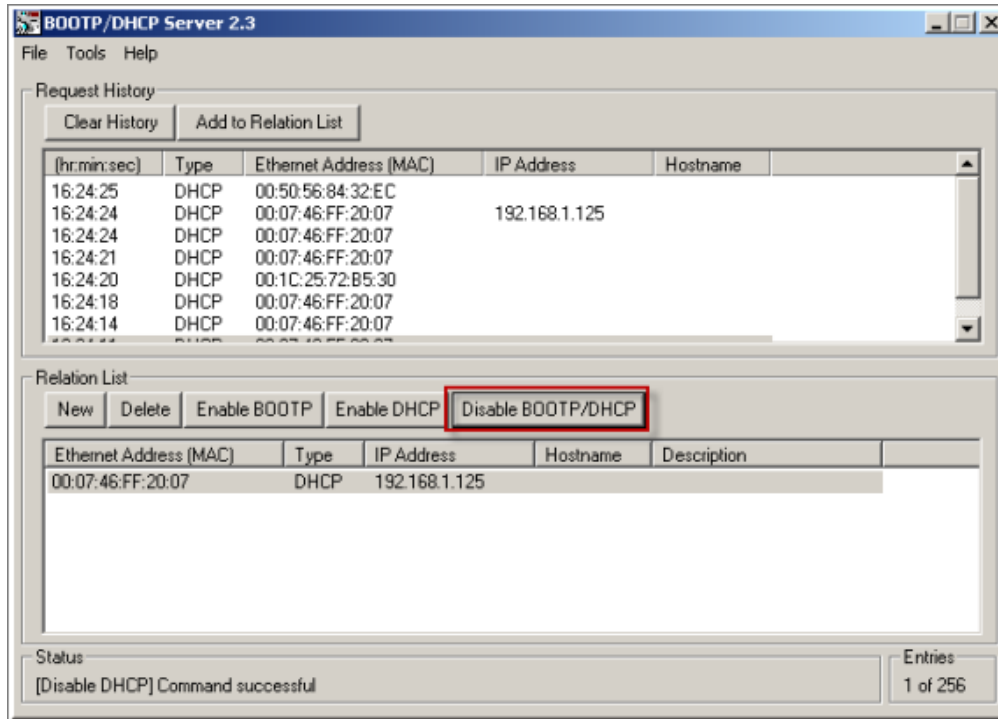
BOOTP/DHCP Mode (300/400)

An Ethernet station (client) may obtain IP address from the BOOTP / DHCP server when address switches are set to 300 (BOOTP) or 400 (DHCP). The IP address, as well as the subnet mask assigned to the station, is stored in the device's EEPROM. When the station is subsequently switched to rotary or PGM-mode and power rest, the IP address is read from the EEPROM.



PGM-DHCP Mode (600)

When the rotary switches are set to 600 it enables PGM–DHCP mode of operation. This mode is the Out-of-the-Box mode and provides the customer with powerful and convenient IP address setup. Procedure is the identical as for DHCP mode. When finished, click on “**Disable BOOTP/DHCP**”. The device switches into PGM mode and keeps assigned IP address in the EEPROM memory.



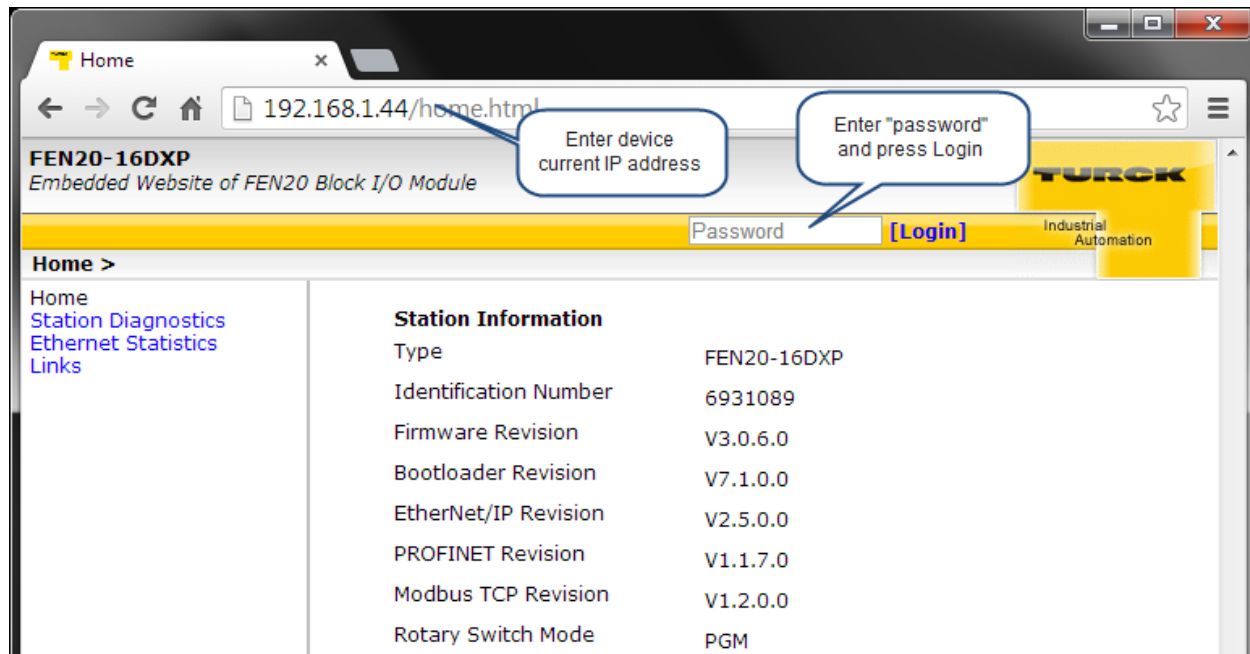
PGM Mode (500)

When the rotary switches are set to 500 (PGM mode), the device will use either the factory default IP address on the first power-up or maintain current IP address whatever it is. Device IP address may be also changed, when in PGM mode, with software tools like:

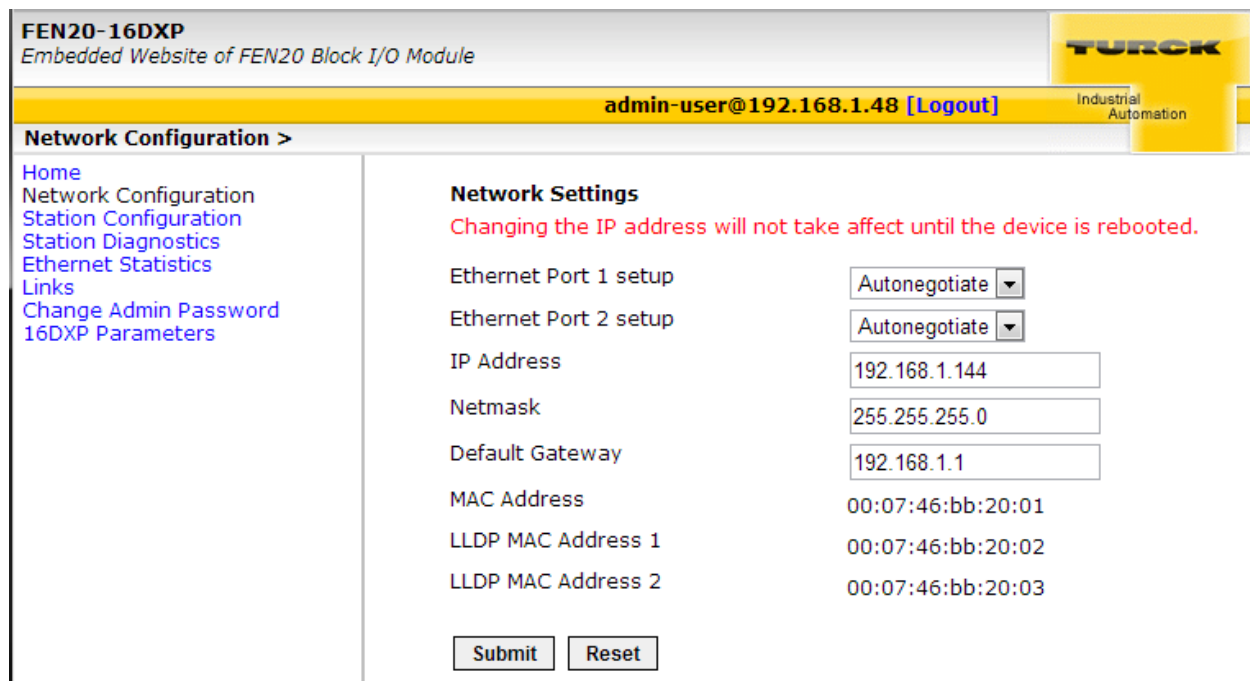
- Device WEB server
- TURCK IP address tool
- IOAssistant configuration tool

FEN20 Start-up Guide
 PGM and Web Server (500)

Use any web browser and enter current IP address of the device. When device web server starts, enter “password” into “Login” field:

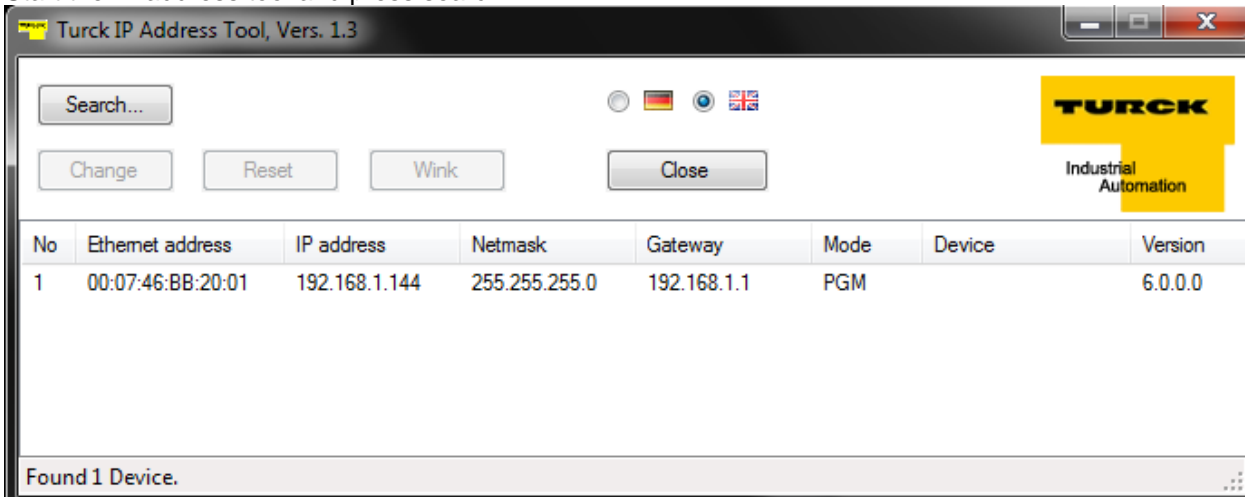


Enter device new IP address, press “**Submit**” and then “**Reset**”. Restart web page.

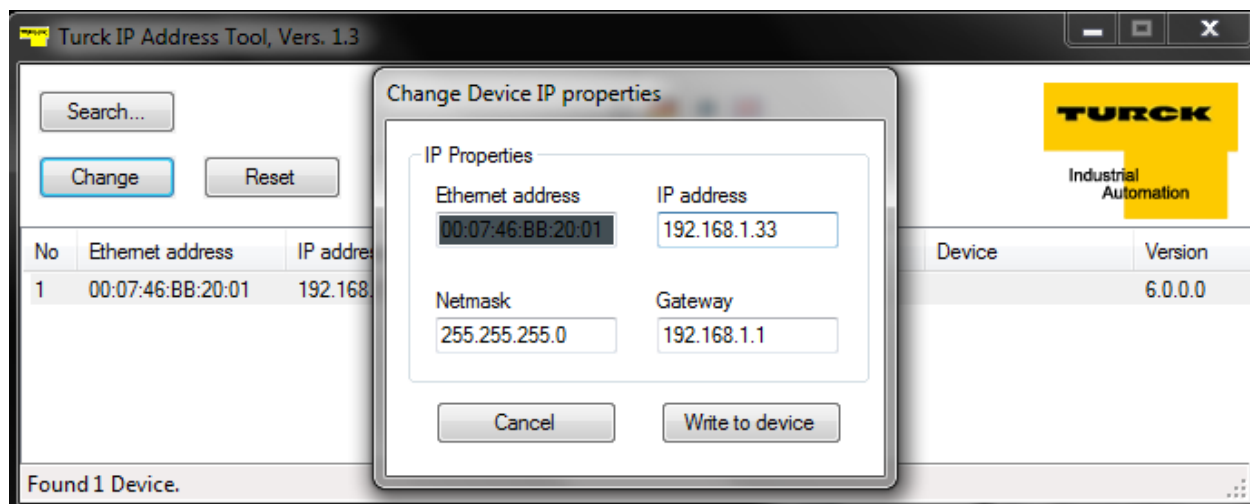


FEN20 Start-up Guide
 PGM and TURCK IP address tool (500)

Start the IP address tool and press search:



Highlight device, press **“Change”** button and enter new IP address; press **“Write to device”**.



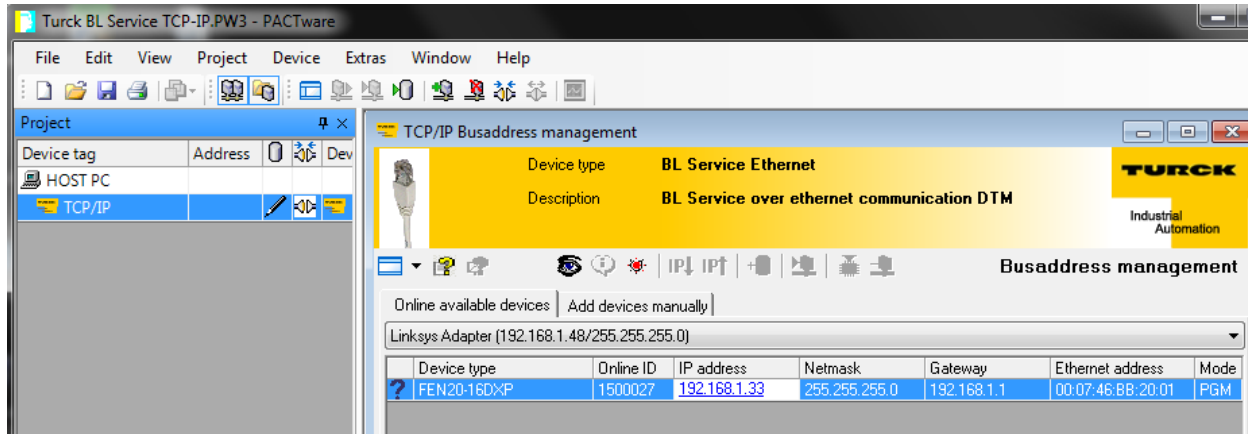
Press search and verify address:



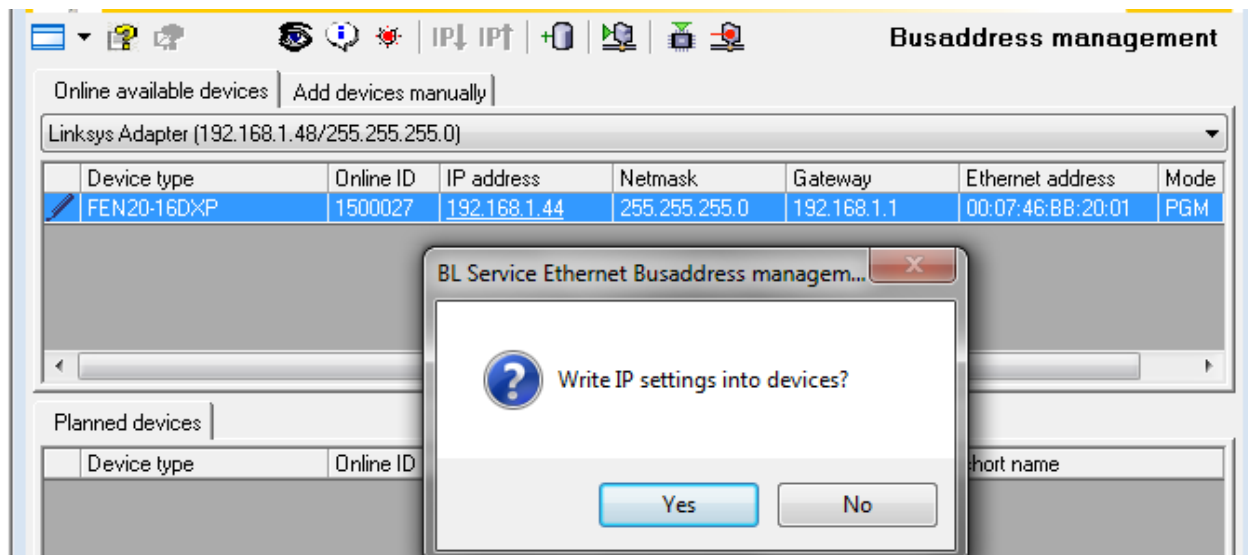
FEN20 Start-up Guide

PGM and IOAssistant

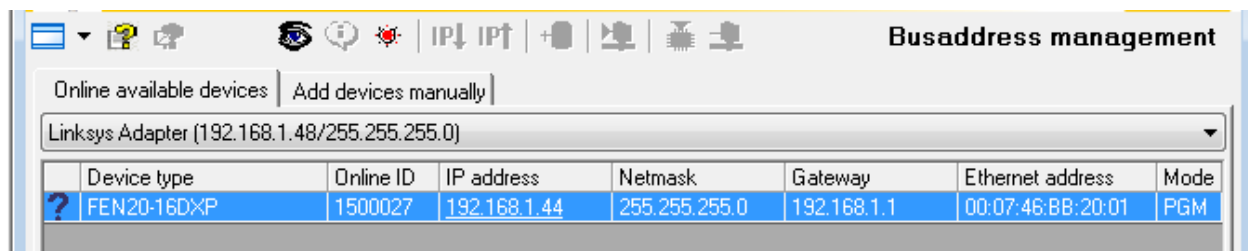
Highlight currently displayed IP address and write new one. DO the same with Netmask and Gateway.



Press Apply and follow dialog:



New IP address is accepted:



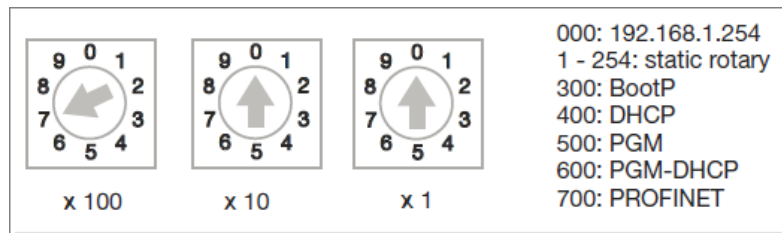
RESTORE Mode (0)

The RESTORE mode is a special mode which restores the IP address to the factory default values. Station responds to PING command, but it does not operate when switches are set to 0.

Set all three rotary switches to 0 and cycle the power to the station. It instantaneously restores IP address, Mask and Gateway as follows:

- IP address: 192.168.1.254
- Mask: 255.255.255.0
- Gateway: 192.168.1.1

Set rotary switches to any position as following diagram and cycle device power:



RECOVERY Mode (900)

The RECOVERY mode (900) is a special mode which resets all device resources to factory default values. It will clear all previously assigned parameter values to the device. Set rotary switches to 900 and cycle the power to the device. Wait for a moment, set rotary switches as previously described and cycle device power again.

EtherNet/IP Configuration

Following section provides information how to configure FEN20 product line with Rockwell Automation Logix controllers (mainly ControlLogix, GuardLogix, CompactLogix controllers). Third party devices may be configured using two different configuration methods which depend on a controller revision:

- Device configuration using EDS file (Electronic Data Sheet):
All Logix controllers, revision 20.00.00 and above, support device configuration using EDS files (EDS profiles) and configuration assembly data
- Device configuration using Ethernet Generic Profile:
All Logix controllers, revision 19.01.00 and below, support device configuration using Ethernet Generic Device profile and Catalog files based on CIP bridging device concept

FEN20 Configuration using EDS Files

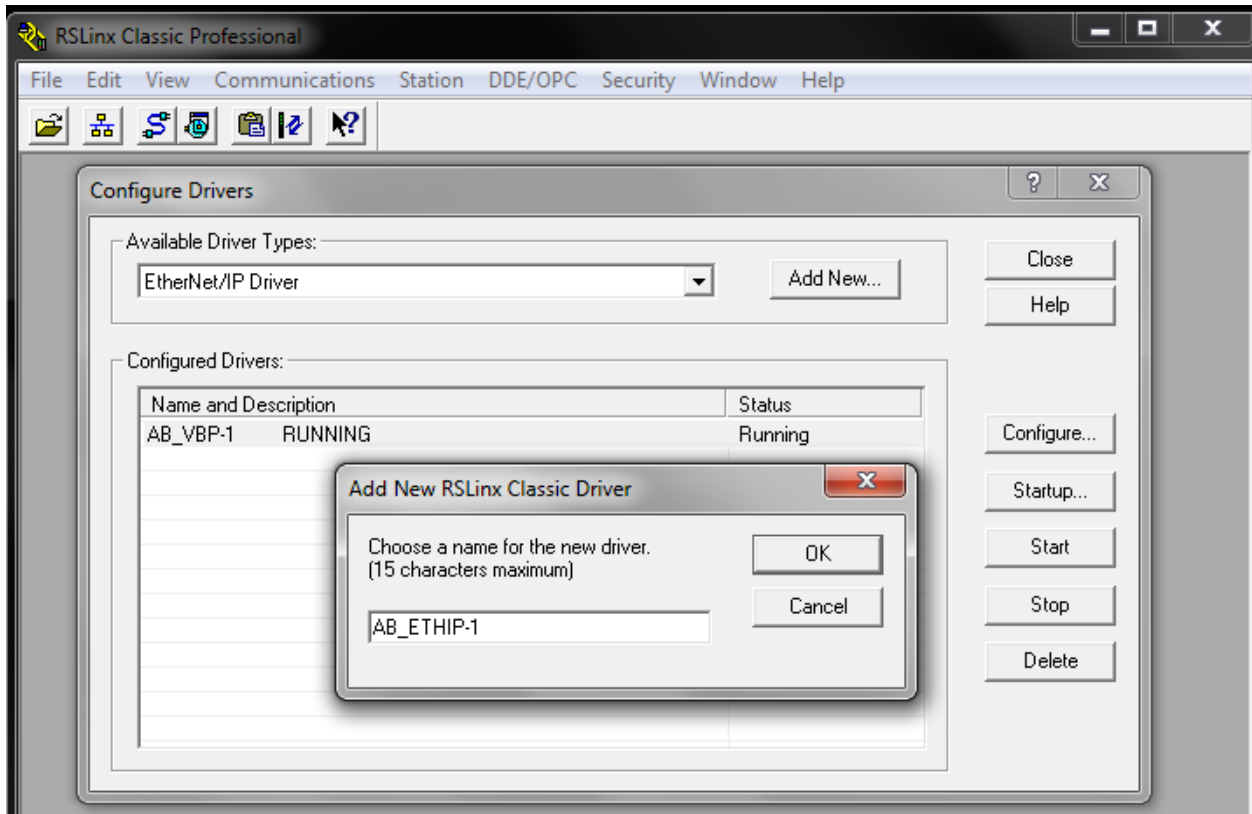
An EDS file which supports configuration assembly data can be imported into RSLogix5000 project as a third party Add-on-Profile device. Once it is imported, Logix Designer creates device configuration tag that contains its configuration data. It is saved in the project and it is pushed to the device whenever connection between the controller and the device is established.

The FEN20 device configuration procedure includes following steps:

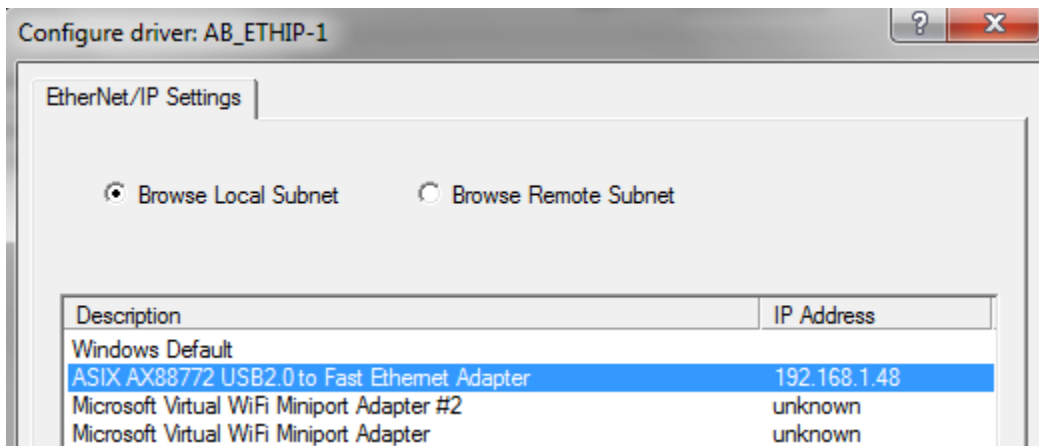
- Configure EtherNet/IP interface
- Create RSLogix5000 project
- Install device EDS file(s)
- FEN20 general configuration
- FEN20 connection configuration
- FEN20 input, output and configuration data tags

Configure User Interface

Configure user interface to the ControlLogix platform using RSLinx communication software and add new EtherNet/IP driver. The assign IP address is actual address of the Ethernet port of the PC:



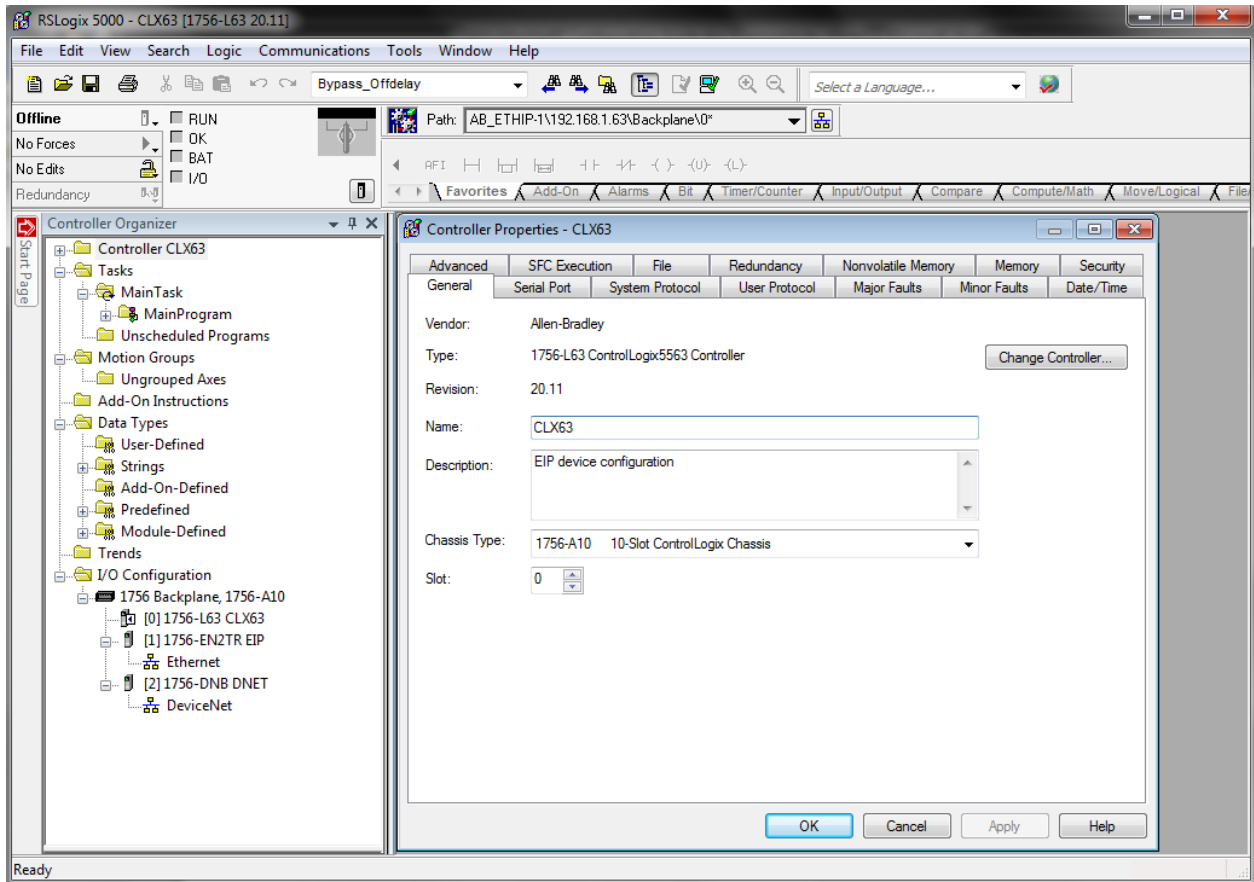
Select designated driver and click apply:



IP address 192.168.1.48 is address of a PC's Ethernet port used for the network configuration.

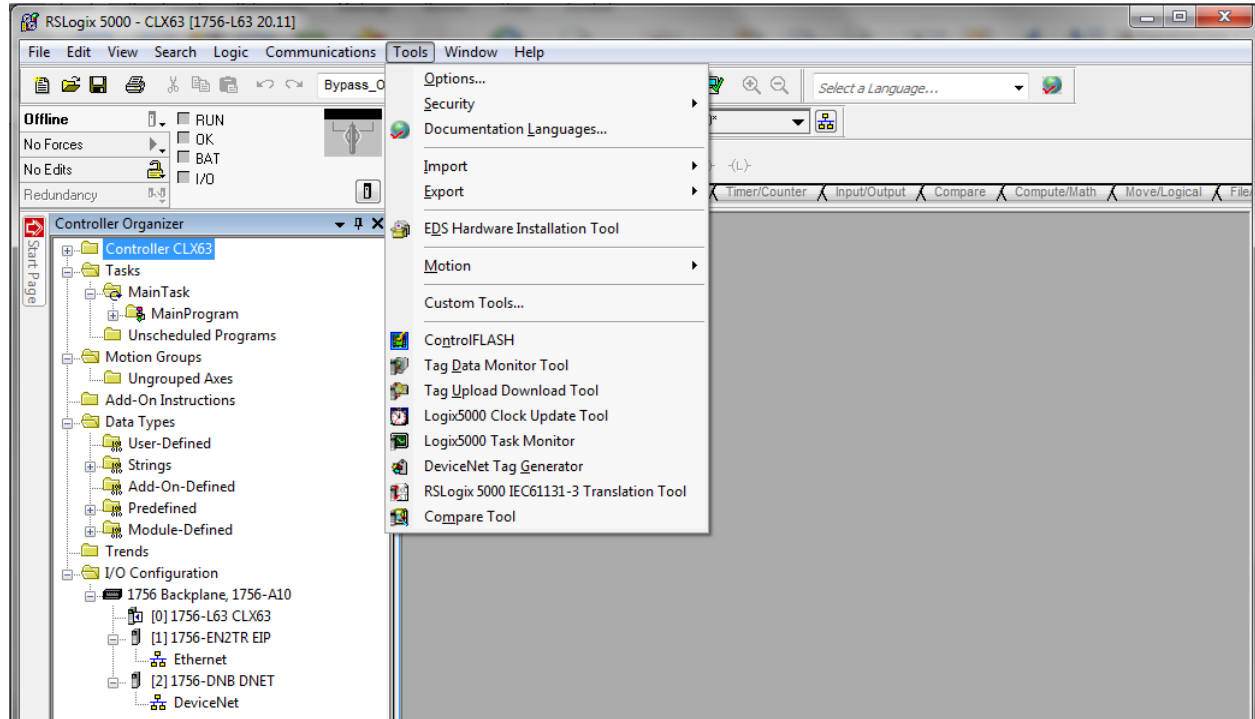
Create RSLogix5000 Project

Open new RSLogix5000 project and configure your PLC



Install EDS Files

Tools > EDS Hardware Installation Tool

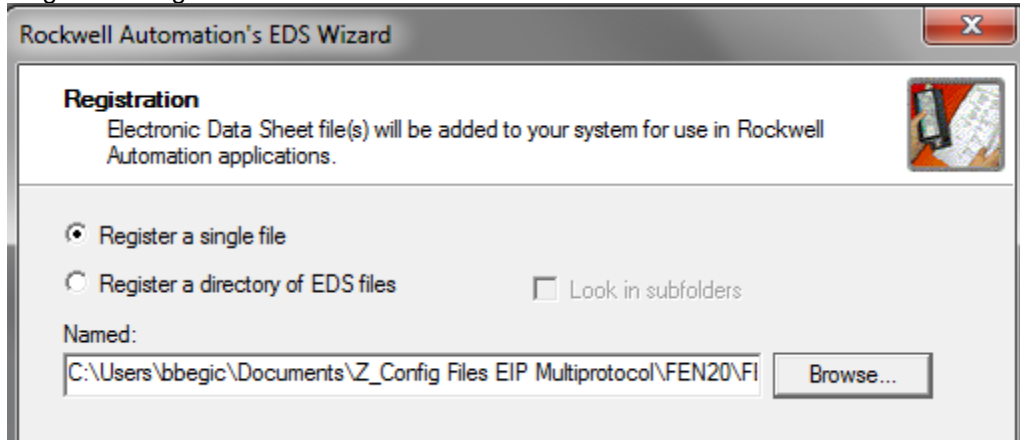


Follow instruction of the wizard

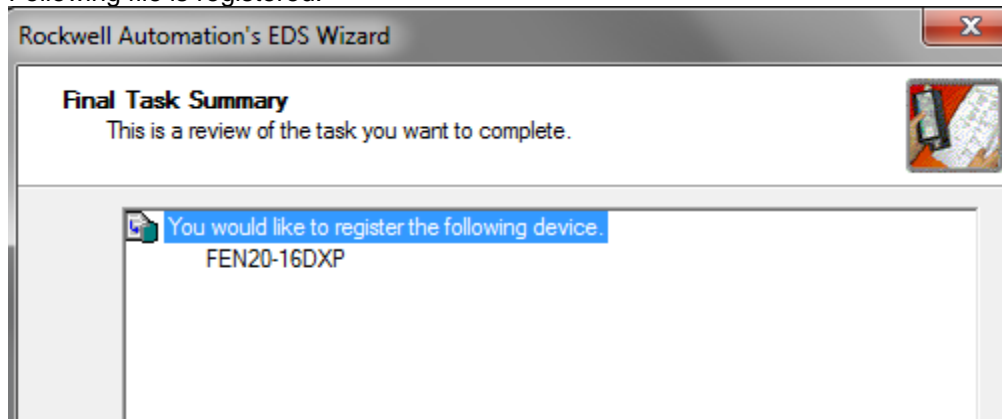


FEN20 Start-up Guide

Register a single EDS file



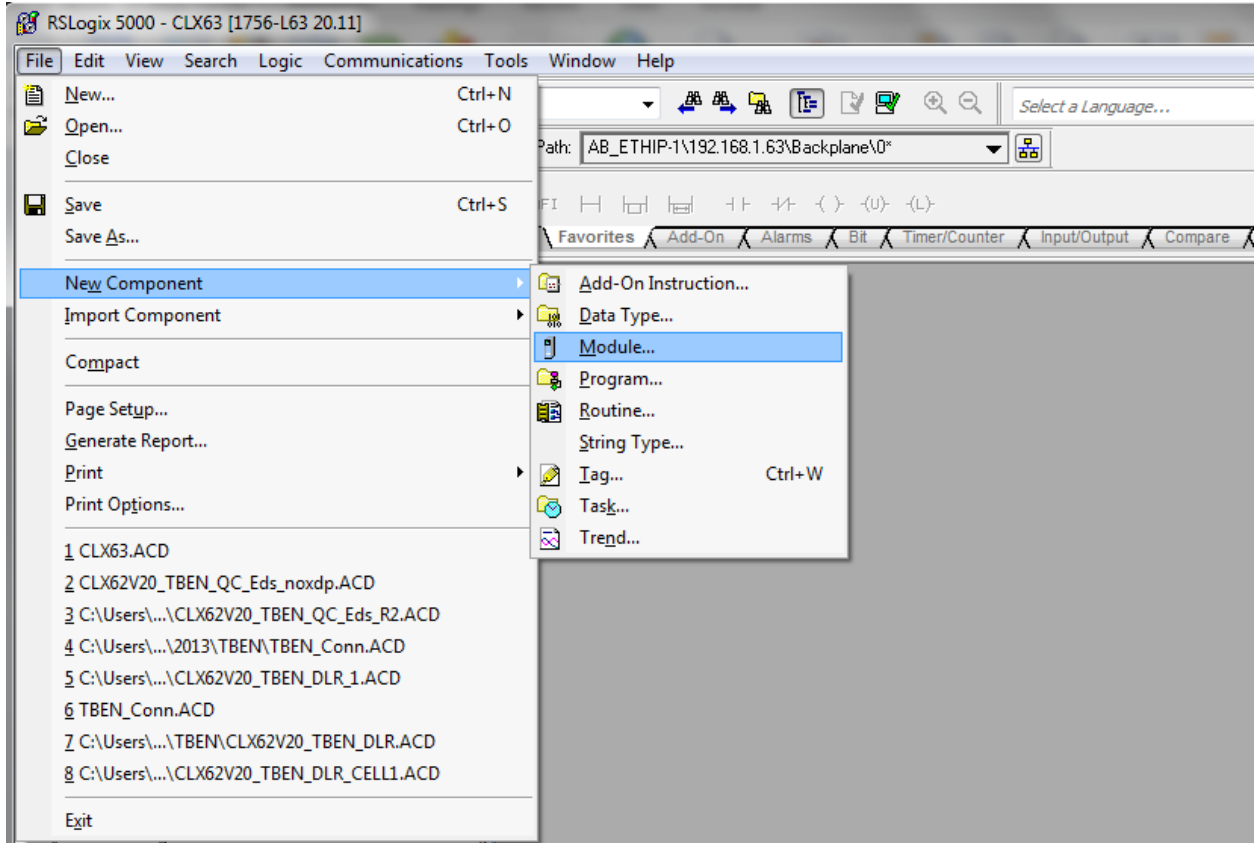
Following file is registered:



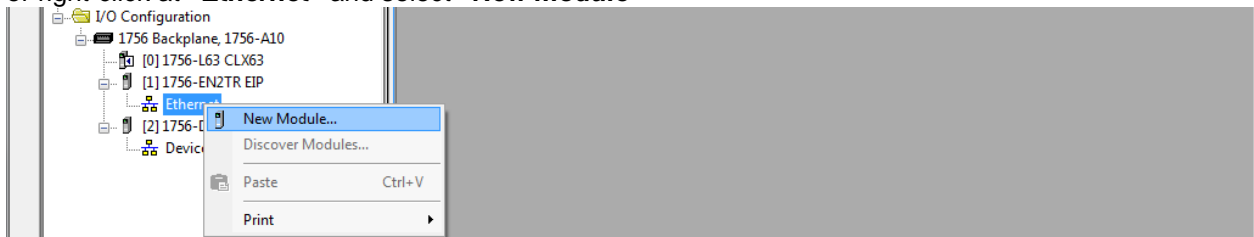
Configure FEN20-16DXP

Following example shows how to add FEN20-16DXP device to the project. The same procedure is used for any other FEN20 Iwjerpq3rptq34ptoi module. To add new device to the EtherNet/IP network use:

- **File > New Component > Module**

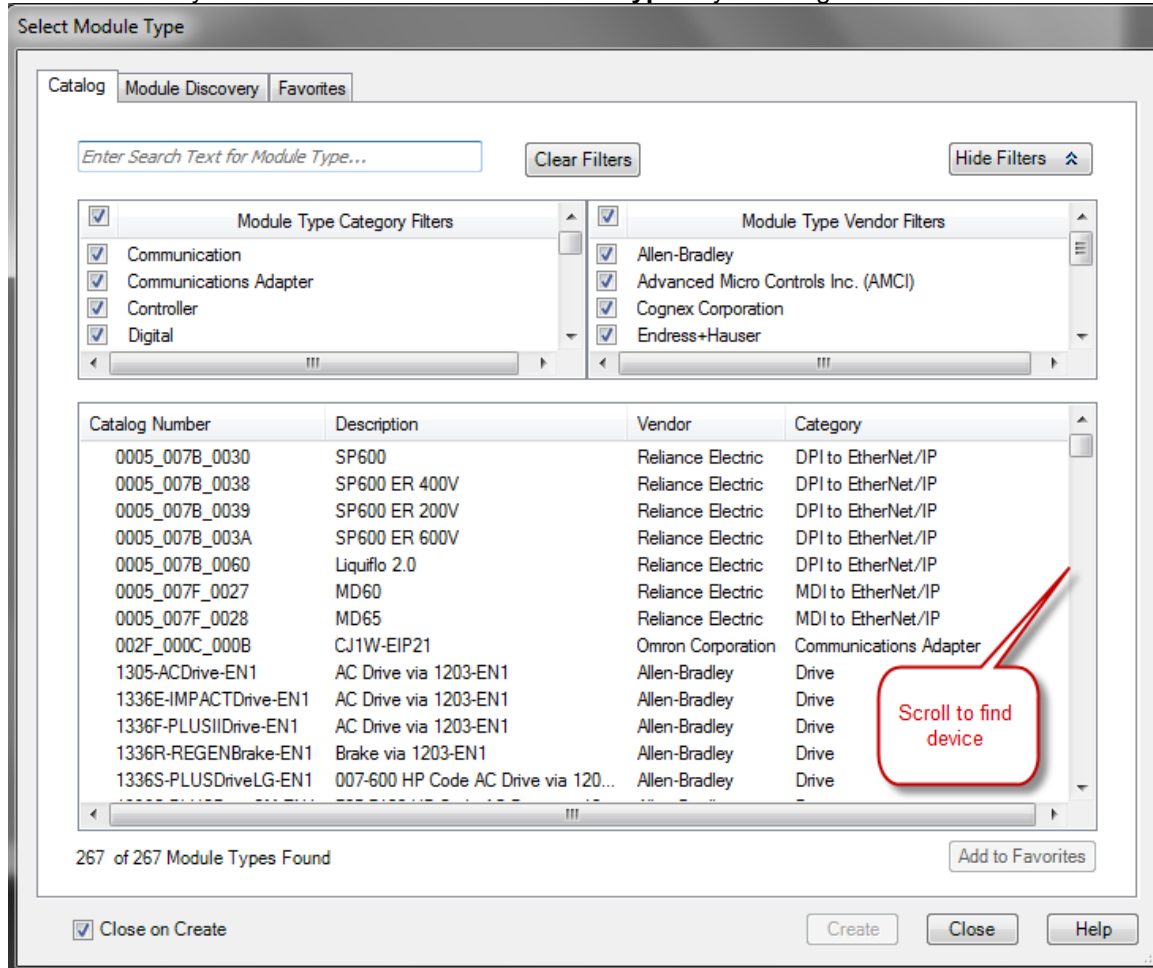


or right-click at **“Ethernet”** and select **“New module”**

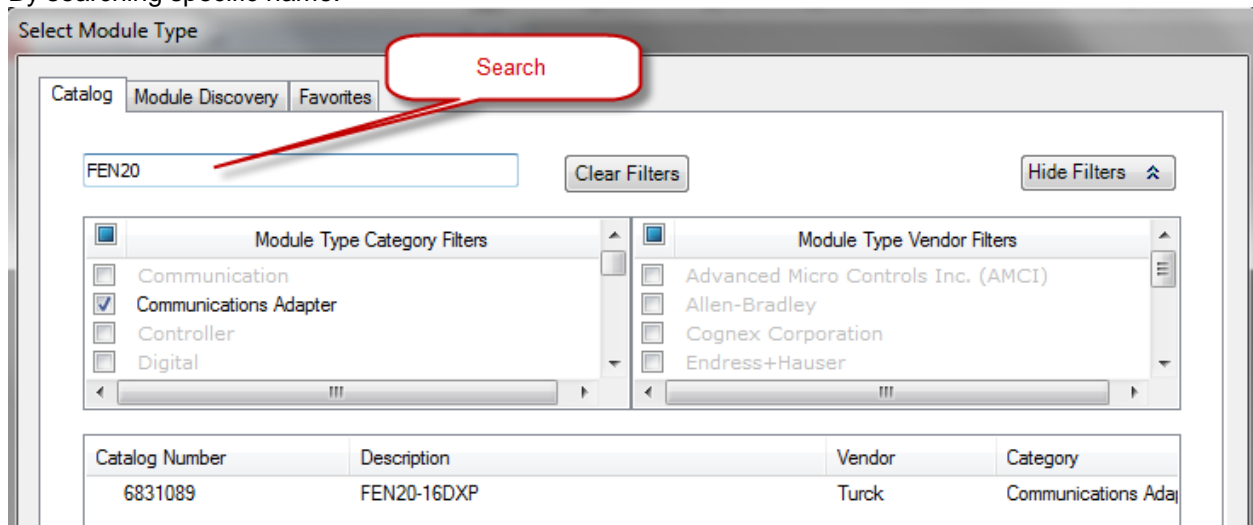


FEN20 Start-up Guide

New device may be located in the “**Select Module Type**” by scrolling:

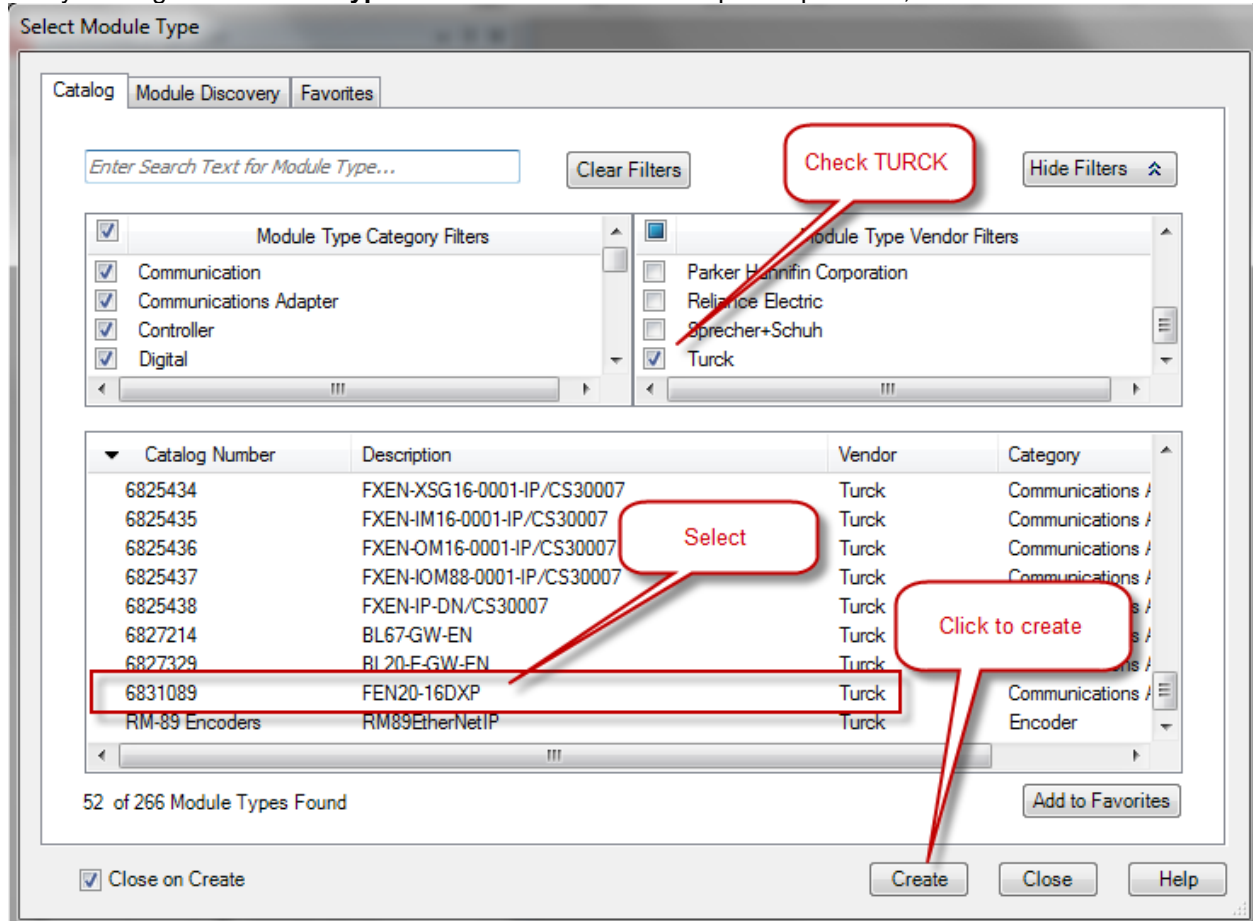


By searching specific name:



FEN20 Start-up Guide

Or by filtering the “**Module Type Vendor Filters**” to search specific products, as follows:

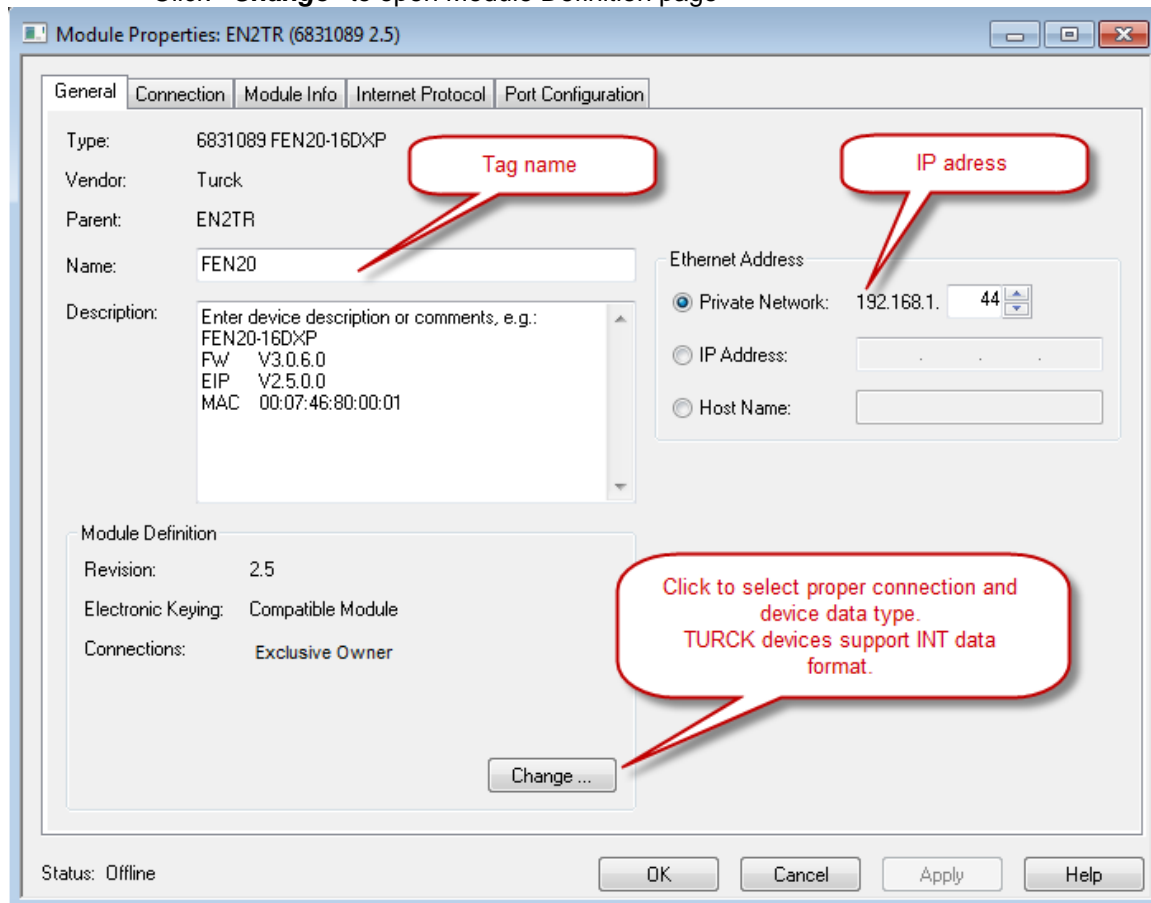


If device name does not appear in the list of registered device, either device EDS file is not installed or installation failed.

FEN20 Start-up Guide

Enter required data into the “**New Module**” general page:

- Name (tag name) and description
- IP address
- Click “**Change**” to open Module Definition page



Module Definition Data Format

FEN20 supports INTEGER data format only. It is important to edit and change data format used by RSLogix5000 to match INTEGER. A failure to do so may cause erroneous IO data or inoperable IO data update. Use "Change" button to:

- Change data format to INTEGER
- Review connection type

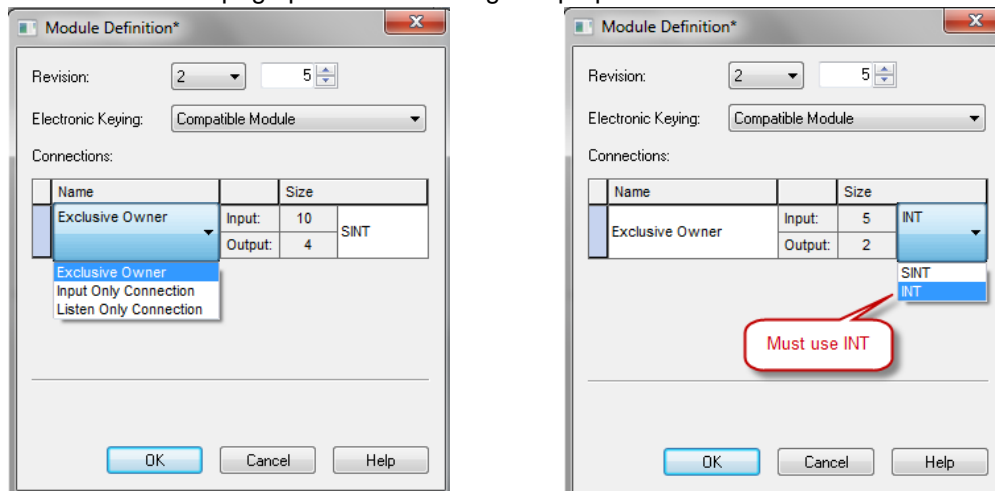
FEN20 supports following connections:

- Exclusive Owner
- Input Only Connection
- Listen Only Connection

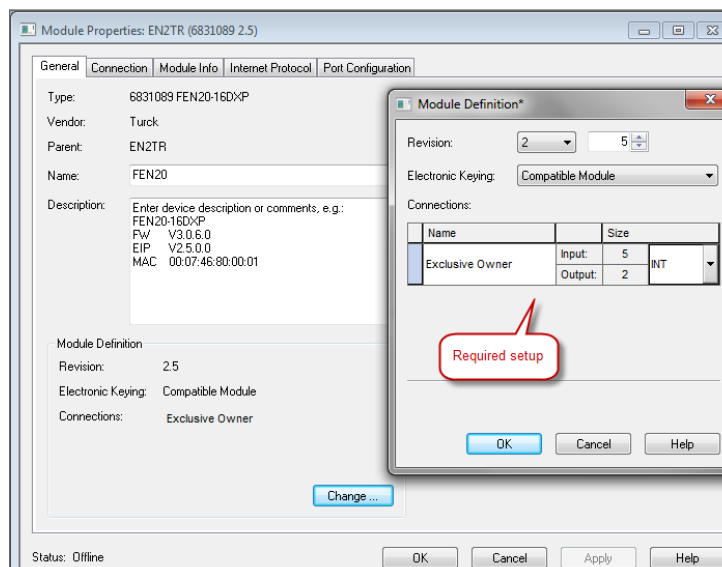
Note:

Exclusive Owner connection is the preferred, default, connection type used by the device. Input Only and Listen Only connections are used to configure the device with multiple PLC's and they do not support configuration assemblies.

The "Module Definition" page provides following setup options:



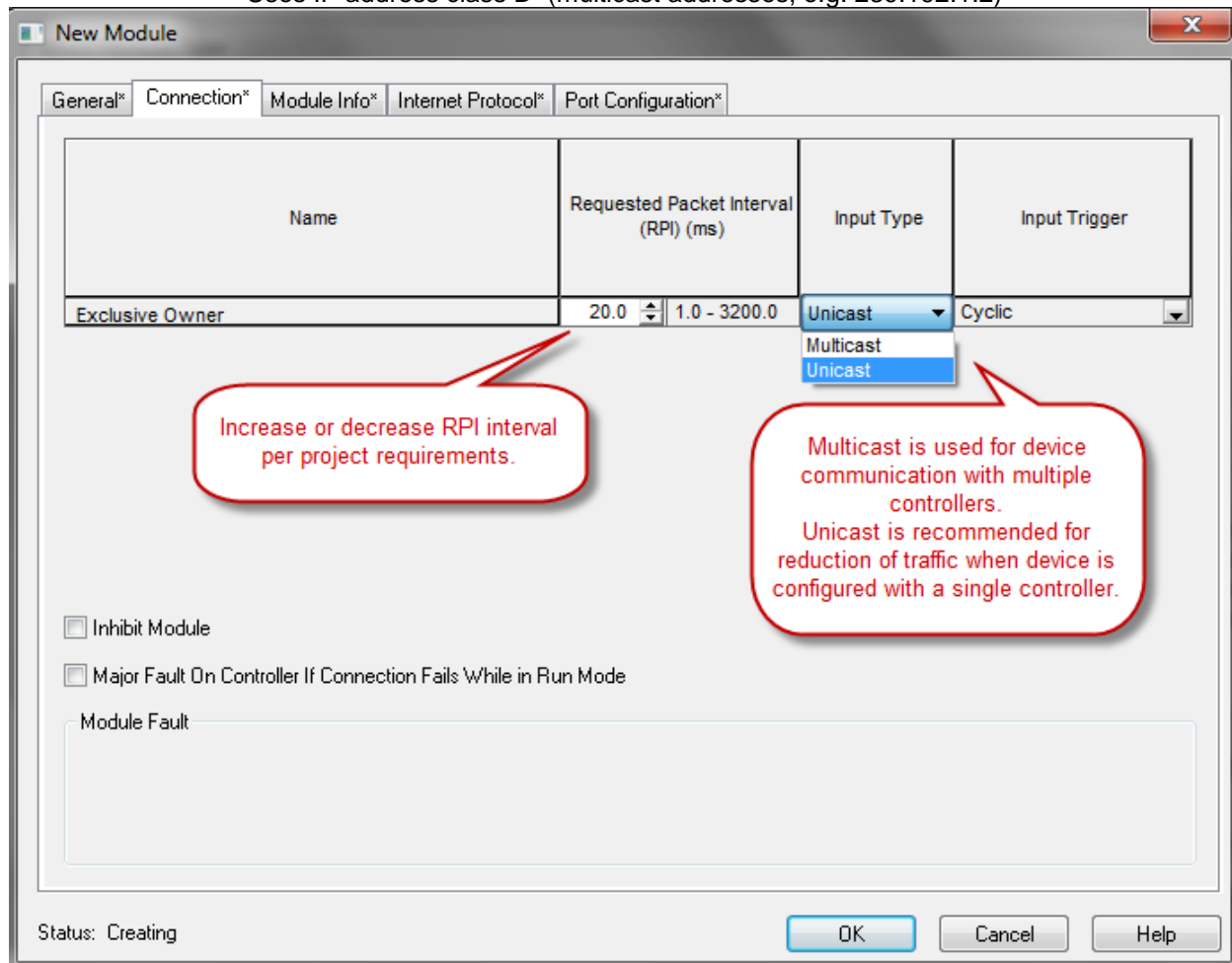
The required setup for the FEN20:



Communication RPI, Multicast / Unicast

The “**Connection**” tab is used for selecting:

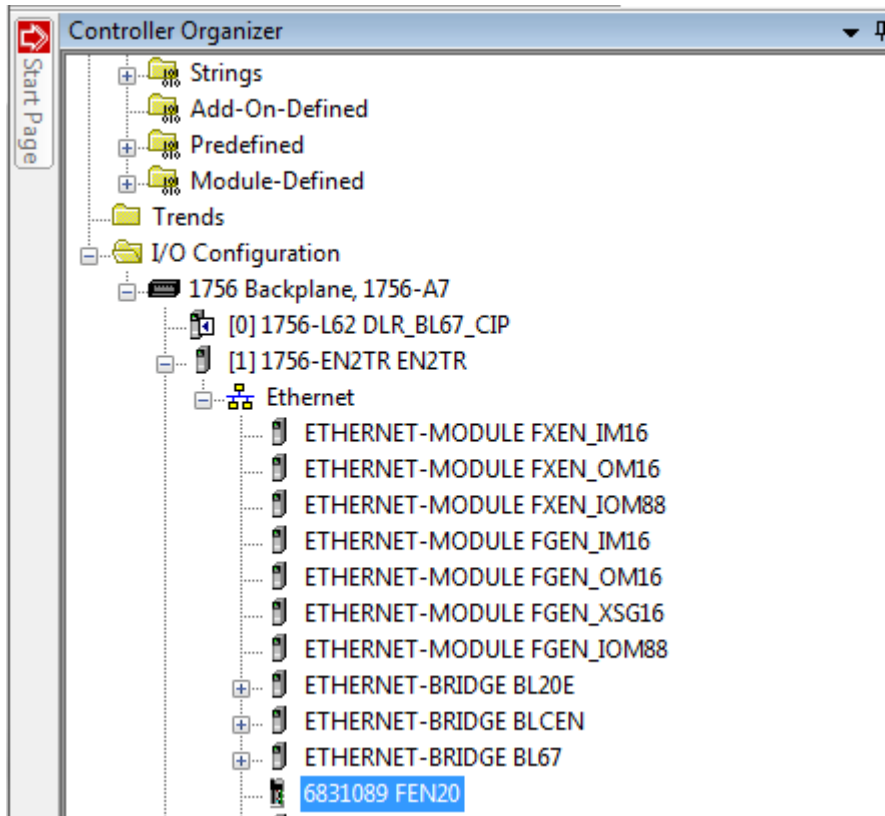
- RPI (Requested Packet Rate) is a scheduled interval when a Target (FEN20) and Origin (controller) transmit data. The connection timeout may occur after 4xRPI time, when either Target or Origin stops sending data.
- Unicast:
 - Used for point-to-point communication (TCP, UDP)
 - Both Producer /Consumer use IP address classes A, B, or C for data exchange
 - No need to process and reject multicast packets
 - Reduces burden on all EIP participants
- Multicast:
 - Used for one-to-many communications (UDP)
 - Multicast allows for multiple consumers. However, a single consumer is supported
 - With multiple consumers, multicast is more timely efficient than unicast
 - Uses IP address class D (multicast addresses, e.g. 239.192.1.2)



Following dialog to complete device configuration.



Input, Output and Configuration Data Tags

The new device, after being configured, is added to the Controller Organizer and associated input, output and configuration tags are created at the Controller Tags level.





Input data tag content:

Note: Device “ConnectionFaulted” flag is attached to the input data by the controller.



Scope:  DLR_BL67_CIP		Show: All Tags		 Enter
Name	Data Type	Description		
[-] FEN20:I	_0030:68310...	Input (Produced) data		
[-] FEN20:I.ConnectionFaulted	BOOL	Controller provided connection status		
[-] FEN20:I.Data	INT[5]	Input (Produced) data		
[+] FEN20:I.Data[0]	INT	FEN20 status word		
[+] FEN20:I.Data[1]	INT	__Input data		
[+] FEN20:I.Data[2]	INT	__Scheduled diagnostics		
[+] FEN20:I.Data[3]	INT	__Scheduled diagnostics		
[+] FEN20:I.Data[4]	INT	__Scheduled diagnostics		

FEN20 Start-up Guide

Output data tag content:

Scope:  DLR_BL67_CIP		Show: All Tags		
	Name	Data Type	Description	
	+ FEN20:I	_0030:68310...	Input (Produced) data	
	- FEN20:O	_0030:68310...	Output (Consumed) data	
	- FEN20:O.Data	INT[2]	Output (Consumed) data	
	+ FEN20:O.Data[0]	INT	FEN20 control word	
	+ FEN20:O.Data[1]	INT	__Output data	

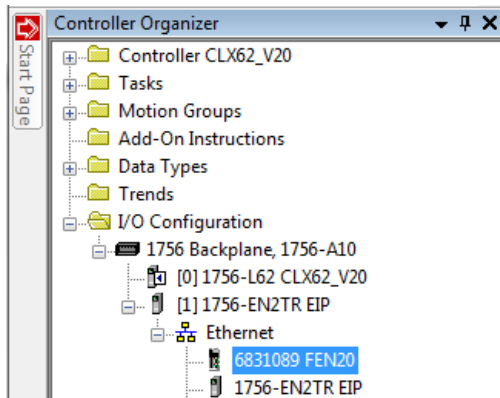
Configuration data tag content:

Scope:  DLR_BL67_CIP		Show: All Tags		
	Name	Data Type	Description	
	- FEN20:C	_0030:68310...	Configuration assembly	
	- FEN20:C.Quick_Connect_0	BOOL	1 = Enable QuickConnect	
	+ FEN20:I	_0030:68310...	Input (Produced) data	
	+ FEN20:O	_0030:68310...	Output (Consumed) data	

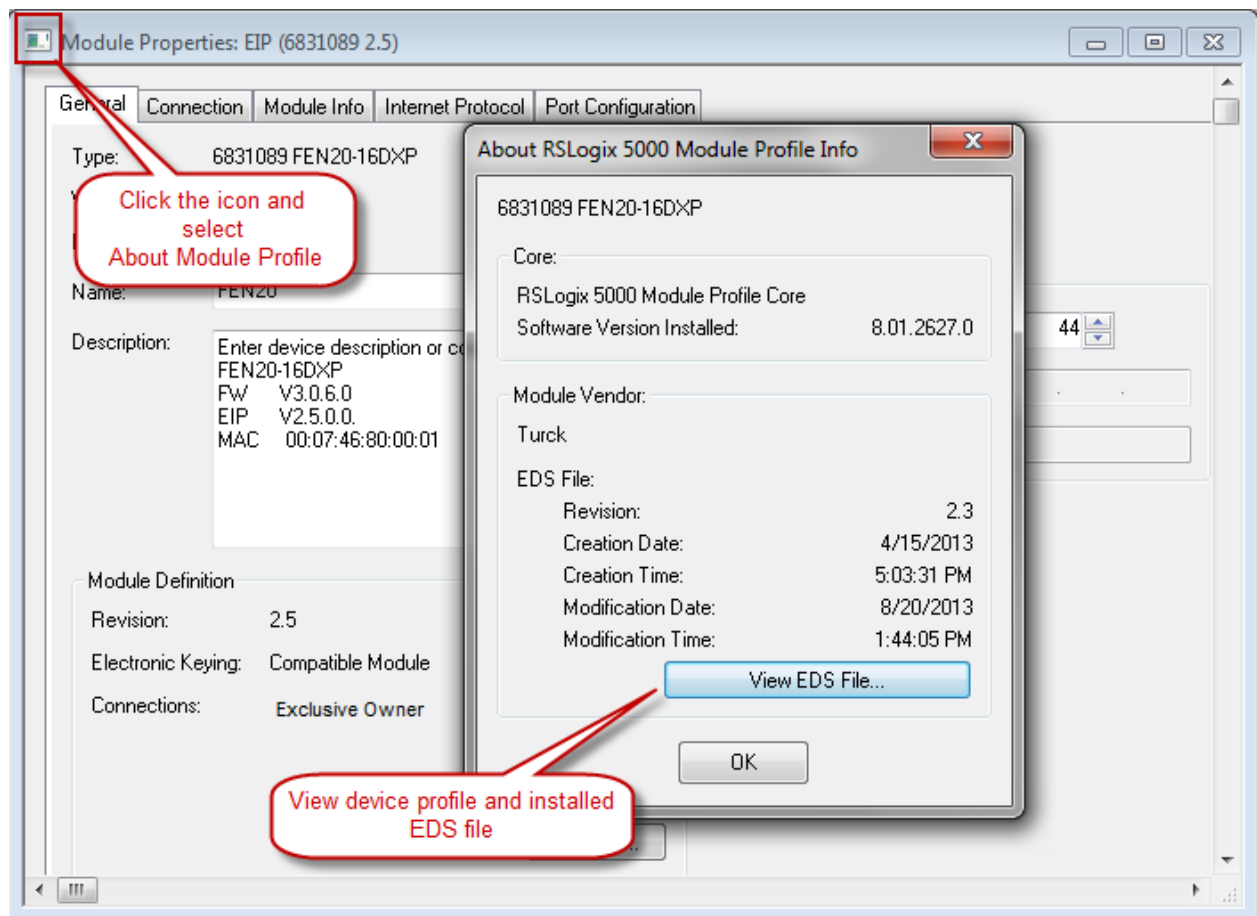
Note: The “Quick_Connect” parameter may be used only in conjunction with QC infrastructure and program control. When enabled, it causes ethernet ports to be set as described in the FEN20 and QC section of the document.

FEN20 Profile Info

The device property is a subject to change. It also provides path to check installed EDS file: right-click on the device and select **“Properties”**:



Click on marked icon and follow instructions:



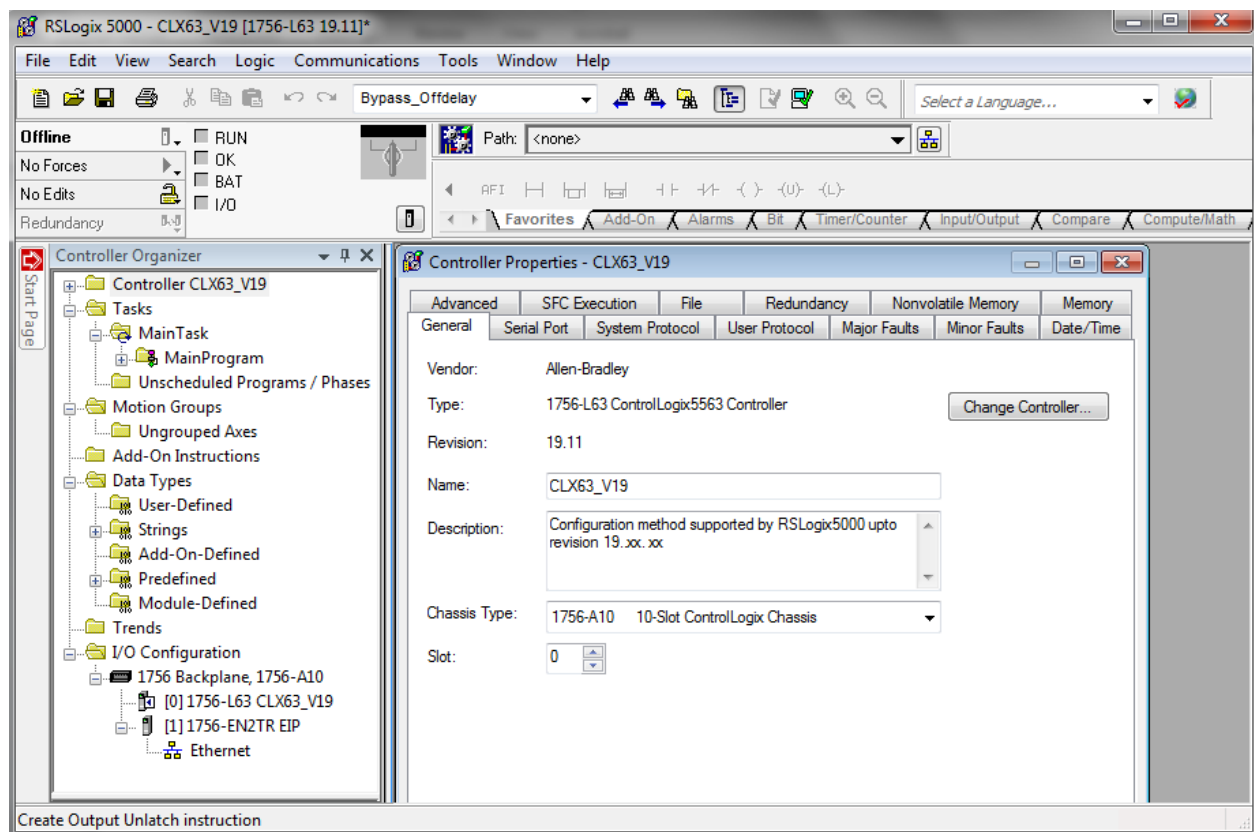
FEN20 Configured as Ethernet Generic Device

Earlier versions of RSLogix5000 Programming Software and Logix controllers, revision 19 or less do not support EDS files. Third party devices are configured using Ethernet Generic profile. It generally creates input, output and configuration tags as array of data. Configuration data is manually entered. A device is implicitly configured using one of the following connections: Exclusive Owner (default), Input Only or Listen Only connection.

The FEN20-16DXP device configuration procedure includes following steps:

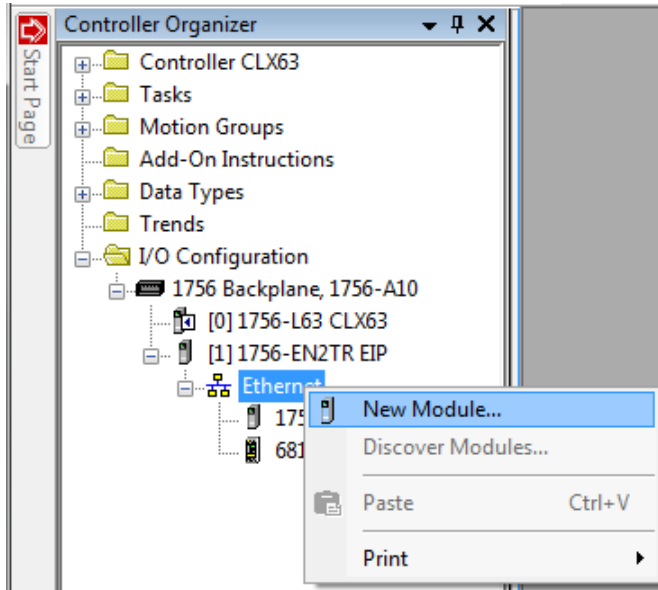
- Create RSLogix5000 project
- Add new device
- Configure connection data
- Review input, output and configuration data tags

Create a New RSLogix5000 Project

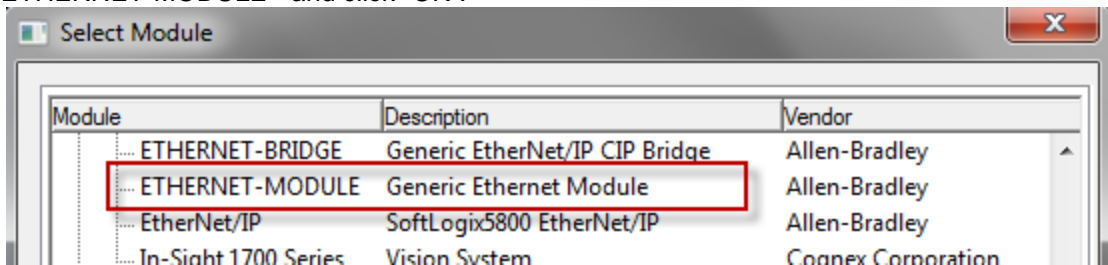


Add New Device

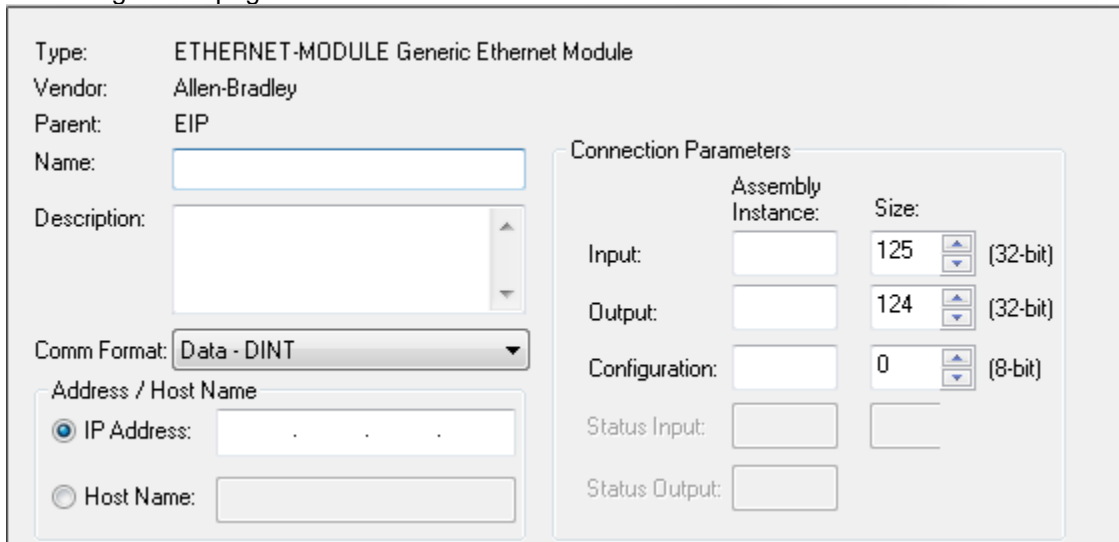
Right click to add new module:



Select "ETHERNET-MODULE" and click "OK":



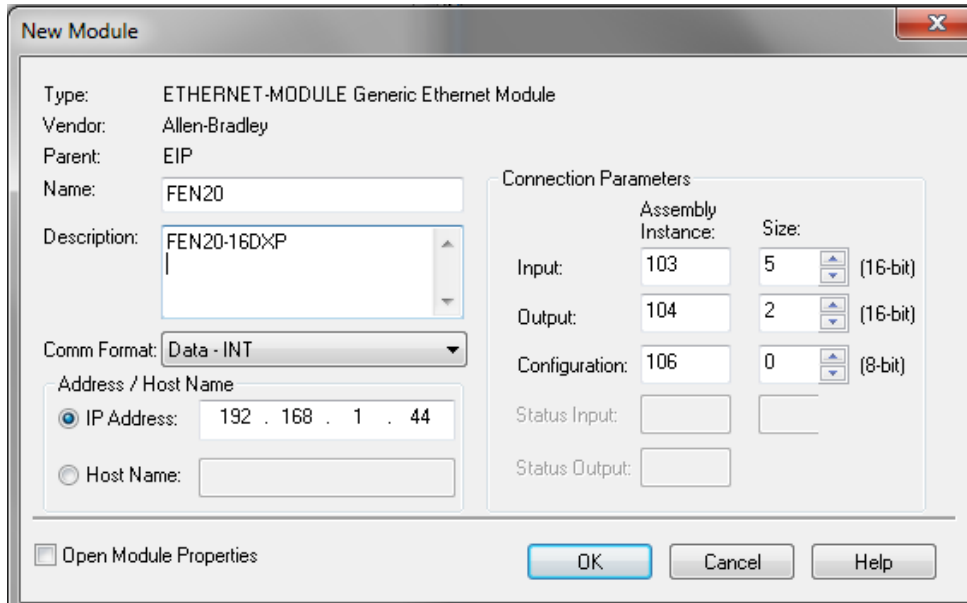
New device configuration page looks as follows:



FEN20 Start-up Guide

Enter following data and click OK:

- Name
- CommFormat field : **Data – INT**
- IP address
- Assembly instances and size per Table 2.1:



The device is implicitly configured with the controller using “Exclusive Owner” connection. It is default connection and only one that supports configuration assembly data.

Table 2.1 contains assembly instance and data size information for the FEN20 product family. The configuration assembly data is pushed to the device during the communication startup (a Forward Open request).

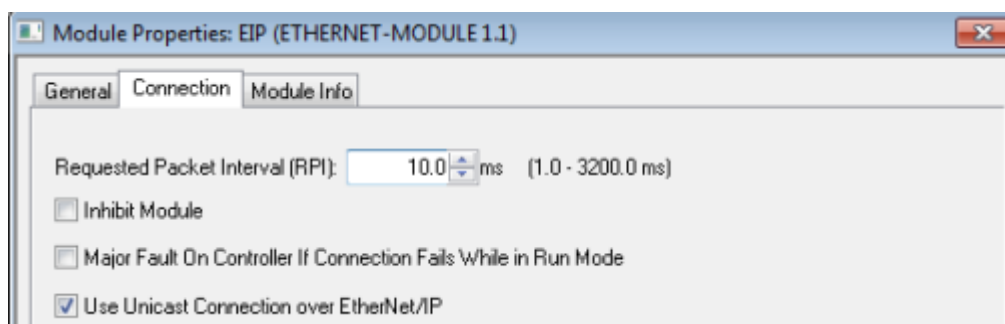
Exclusive Owner connection	Input assembly instance	Input size	Output assembly instance	Output size	Configuration assembly instance	Configuration size
FEN20-16DXP	103	5	104	2	106	0

Table 2.1

–

Exclusive Owner configuration data

Configure connection data according to the project requirements:



Configuration Assembly Data

The device Configuration data is an array of data saves in a PLC. It pushes configuration to the device during the Forward Open request. That occurs every time when device is connected, or power reset or replaced with the same model.

Following table shows the structure of the FEN20-16DXP configuration data:

FEN20-16DXP								
	Bit7	Bit6	Bit5	Bit4	Bit3	Bit2	Bit1	Bit0
Byte0	Reserved							
Byte1								
Byte2								
Byte3								
Byte4								
Byte5								
Byte6								
Byte7								
Byte8								
Byte9	Reserved							QC
Byte10-15	Reserved							

Table 2.4 – FEN20-16DXP configuration data

Abbreviations:

QC - Quick Connect

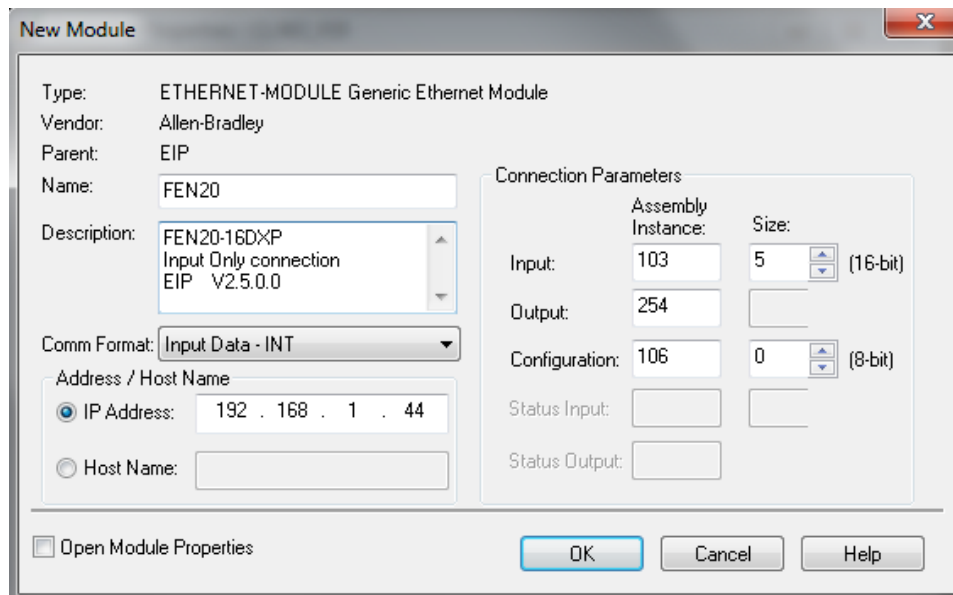
Input Only Connection Configuration

Input Only connection is used to configure a device when:

- It is configured with multiple PLCs (max three) where only one is Exclusive Owner
- Other PLCs get input data only. They maintain connection if exclusive owner is closed
- PLCs have to be set to the same RPI and must use MULTICAST messaging. PLCs may reside on different subnets, VLANs, when infrastructure is available.

Enter following data and click OK:

- Name
- CommFormat field : **Input Data – INT**
- IP address
- Assembly instances and size per Table 2.2:



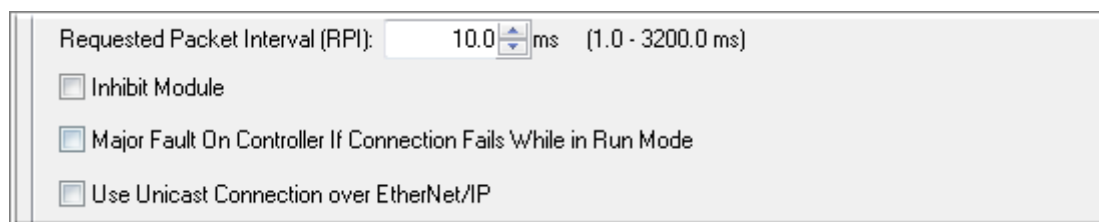
The device is implicitly configured with the controller using “Input Only” connection. Table 2.2 contains assembly instance and data size information for the FEN20-L1 product family.

Input Only connection	Input assembly instance	Input size	Output assembly instance	Output size	Configuration assembly instance	Configuration size
FEN20-16DXP	103	5	254	n/a	106	0

**Table 2.2
– Input
Only**

configuration data

Note: If multiple connections to the device are used, then use casme RPI and Multicast



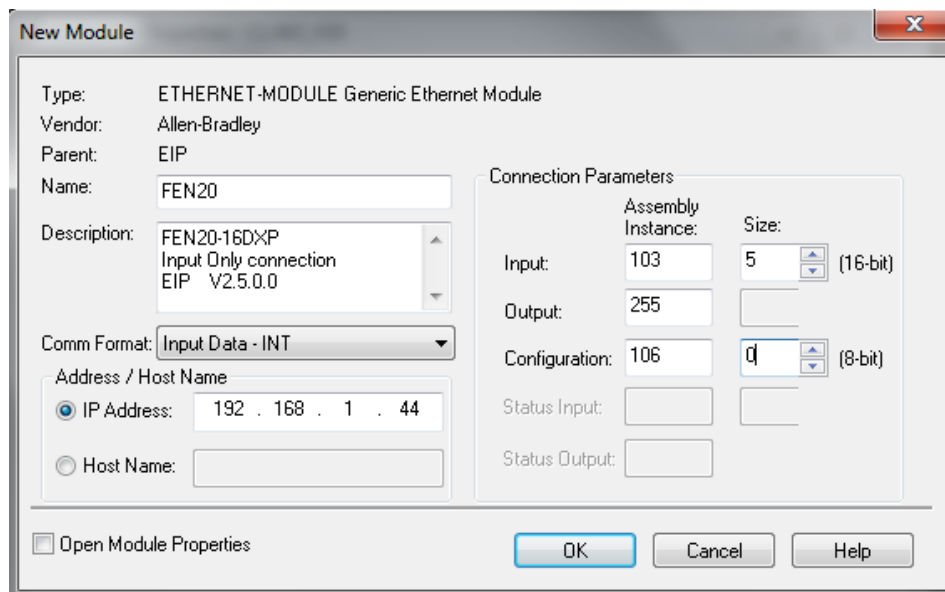
Listen Only Connection Configuration

Listen Only connection is used to configure a device when:

- It is configured with multiple PLCs (max three) where only one is Exclusive Owner
- Other PLCs get input data only. They drop connection if exclusive owner is closed
- PLCs have to be set to the same RPI and must use MULTICAST messaging. PLCs may reside on different subnets, VLANs, when infrastructure is available.

Enter following data and click OK:

- Name
- CommFormat field : **Input Data – INT**
- IP address
- Assembly instances and size per Table 2.3:



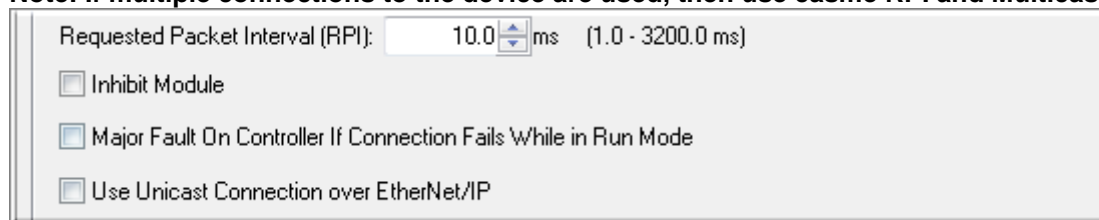
The device is implicitly configured with the controller using “Input Only” connection. Table 2.3 contains assembly instance and data size information for the FEN20-L1 product family

Listen Only connection	Input assembly instance	Input size	Output assembly instance	Output size	Configuration assembly instance	Configuration size
FEN20-16DXP	103	5	255	n/a	106	0

Table 2.3 – Listen Only

configuration data

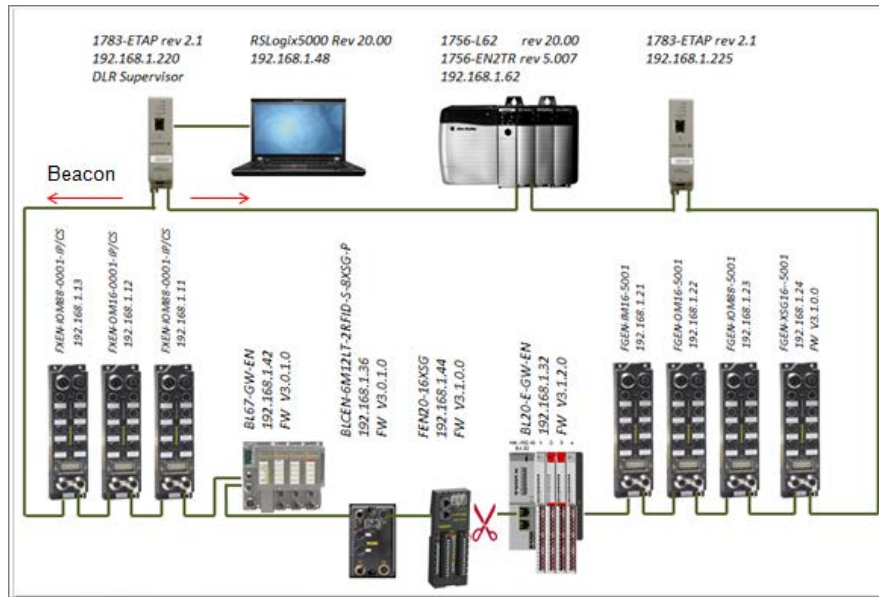
Note: If multiple connections to the device are used, then use casme RPI and Multicast



FEN20 and DLR Network

A Device Level Ring (DLR) network is the EtherNet/IP network capable of fast recovery and uninterrupted service in case of a single break point in network topology. It consists of a ring supervisor and ring nodes connected in closed loop, ring topology. The ring supervisor maintains DLR protocol, performs fast fault detection and reconfiguration of the network architecture into a linear in less than 3msec for 50 node network.

Nodes do not require any DLR related configuration and no external switches are necessary. Following image illustrates a simple ring network:



FEN20 DLR features

FEN20 series is designed to meet DLR network requirements including:

- Compliance with the DLR and QoS Object Specification, *Volume 2: EtherNet/IP Adaptation of CIP, Chapter 5: Object library, Edition 1.15*
- Integrated embedded switching technology that supports two external and an internal Ethernet ports with following features:
 - Auto-negotiation, with 10/100Mbps, full/half duplex
 - Forced setting of speed/duplex
 - Turn off flow control on ring ports;
 - Auto MDIX (medium dependent interface crossover), in both auto-negotiate and forced speed/duplex modes.
- Fault detection in the ring topology on either Ethernet port to the left or right of the breaking point and error reporting to the supervisor

FEN20 and QC startup

The Quick Connect (QC) provides high device availability during startup of EtherNet/IP network. Typical application where it is implemented is a frequent robot tool exchange along assembly lines in the automotive industry, Figure 1.

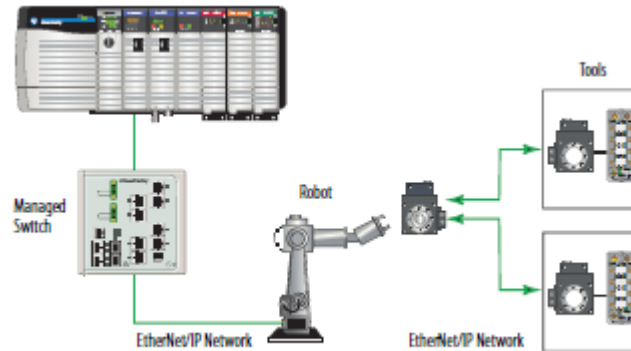


Figure 1: Tool exchange

When new tool is engaged and locked into the robot arm, it generates a high lock signal to the Logix controller which starts the QC allocation sequence. The QC sequence has to be complete in less than 350msec. The QC is supported by Logix controller’s revision 20.00.00 and above.

The Quick Connect Sequence

Following sequence of events describe Quick Connect application:

- The Logix controller inhibits current QC modules and turns power OFF
- The robot arm physically disengages a tool
- The robot arm physically attaches a new tool that has one or more QC modules mounted on the tool
- The robot acknowledges successful attachment of a tool with appropriate lock signal
- The Logix controller turns power ON to the QC modules when lock signal is received
- The Logix controller waits for QC modules to complete initialization before it un-inhibits device
- The robot is ready for operation when connections with device are established

Ethernet port setup

FEN20 Ethernet ports are marked as:

- “P1”, Ethernet port 1
- “P2”, Ethernet port 2

Note that it is essential to connect incoming Ethernet cable to P1. When QC is enabled, Ethernet ports are set as follows:

Ports	Auto-negotiate	Port Mode	Forced speed / duplex	Speed	Duplex
P1	Disabled	MDI	Enabled	100	Full
P2	Disabled	MDIX	Enabled	100	Full

Enable QC

- If FEN20 is configured using EDS file, set QC parameter to 1:

Scope: CLX62_V20		Show: All Tags				
Name	Value	S	Δ	Data Type	Alias	Description
[-] FEN20:C	{...}			_0030:683...		
[-] FEN20:C.Quick_Connect_0	0	Decimal		BOOL		1 = QC Enabled
[+] FEN20:I	{...}			_0030:683...		
[+] FEN20:O	{...}			_0030:683...		

- If FEN20 is configured as Ethernet Generic module, set "... C:Data[9]= 1"

Scope: CLX63_V19		Show: All Tags				
Name	Value	S	Δ	Data Type	Alias For	Description
[-] FEN20:C	{...}			AB:ETHER...		Configuration data
[-] FEN20:C.Data	{...}	Decimal		SINT[400]		Configuration data
[+] FEN20:C.Data[0]	0	Decimal		SINT		Configuration data
[+] FEN20:C.Data[1]	0	Decimal		SINT		Configuration data
[+] FEN20:C.Data[2]	0	Decimal		SINT		Configuration data
[+] FEN20:C.Data[3]	0	Decimal		SINT		Configuration data
[+] FEN20:C.Data[4]	0	Decimal		SINT		Configuration data
[+] FEN20:C.Data[5]	0	Decimal		SINT		Configuration data
[+] FEN20:C.Data[6]	0	Decimal		SINT		Configuration data
[+] FEN20:C.Data[7]	0	Decimal		SINT		Configuration data
[+] FEN20:C.Data[8]	0	Decimal		SINT		Configuration data
[+] FEN20:C.Data[9]	1	Decimal		SINT		1 = QC Enabled
[+] FEN20:C.Data[10]	0	Decimal		SINT		Configuration data

- Download configuration to the PLC and connect the gateway
- QC mode will be executed during the next gateway power-up and subsequent power cycles

Disable QC

- Clear QC attribute of the configuration assembly instance 106, byte 10
- Download configuration to the PLC and connect the gateway
- Standard mode is executed on the next and subsequent power cycles of the gateway

Reset to factory default

- Set the rotary switches to 900 and cycle power to the module
- Set the rotary switches to 100 and cycle power to the module
- The module is reset to factory default settings and
 - IP address 192.168.1.100
 - Mask 255.255.255.0
 - Gateway 192.168.1.1

QC startup time

The startup time is 200msec.

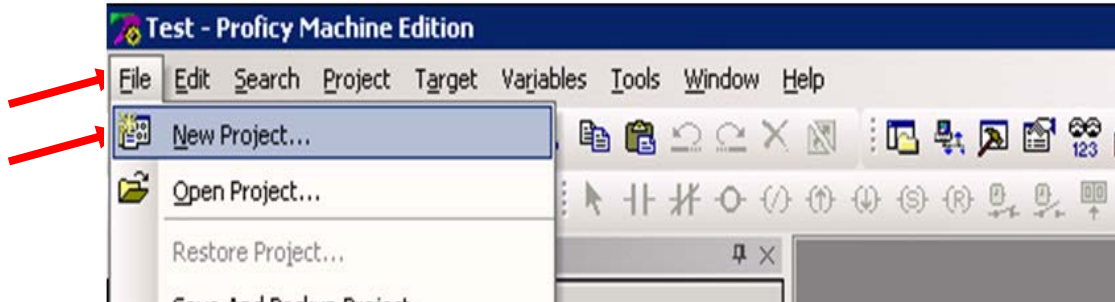
PROFINET Configuration

Setup

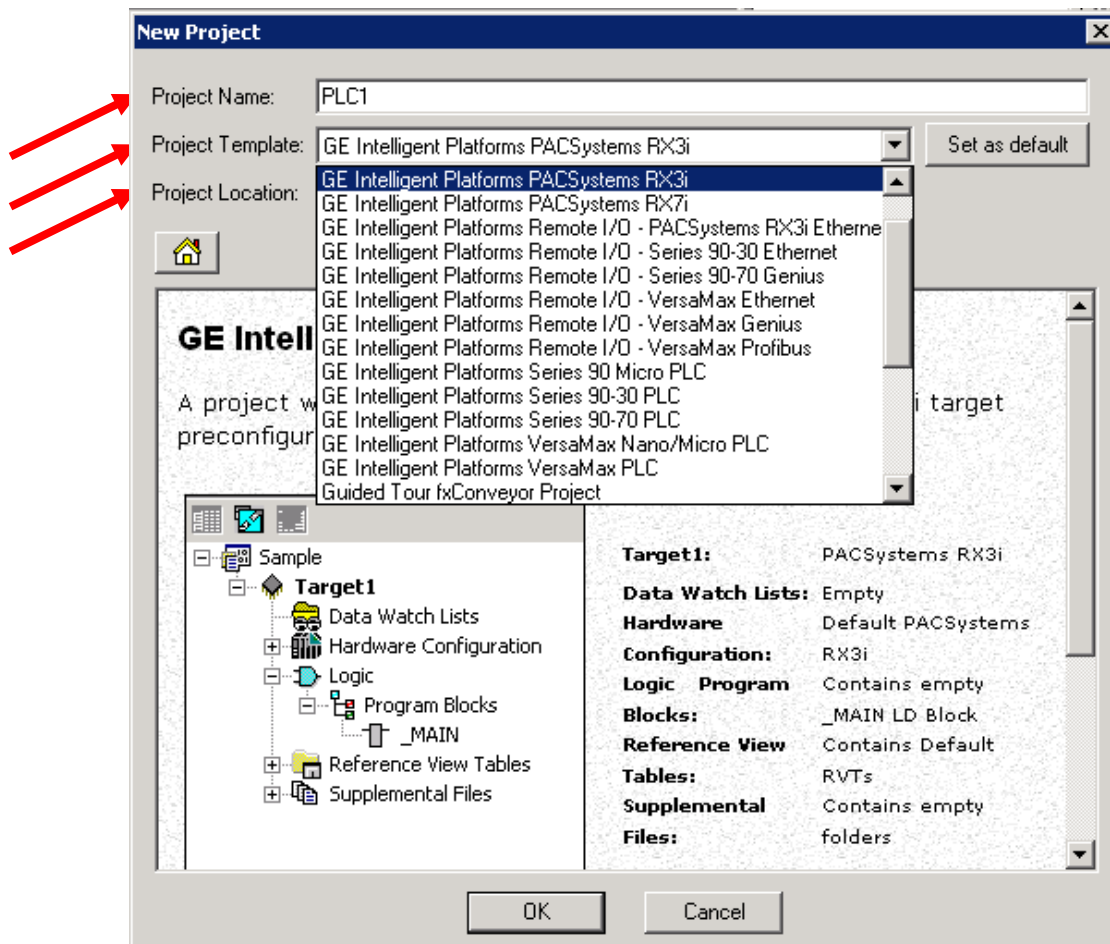
GE Proficy Machine Edition Setup

It is assumed that there is working knowledge of GE Proficy Machine Edition. If not, please refer to the [GE Proficy Machine Edition Manual](#).

Create a New project in Proficy using New Project Wizard or Open Project
File -> New Project

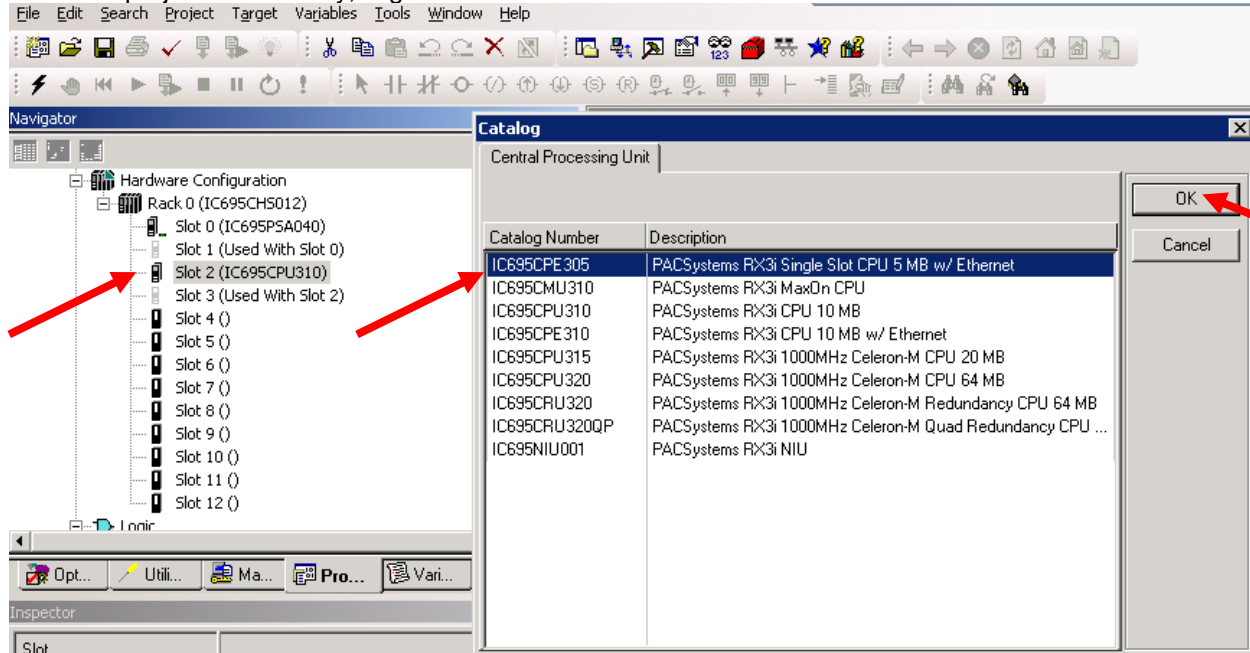


For a new project, insert the Project Name, Project Template, and Project location. When done click "OK".

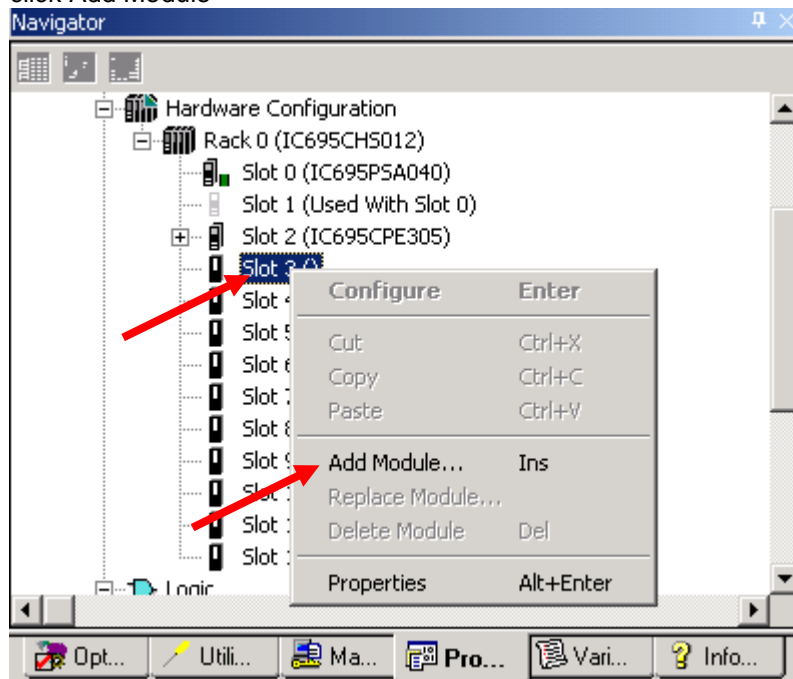


FEN20 Start-up Guide

Once the project is in Proficy, Right click on the Processor and select the CPU . Click “OK”

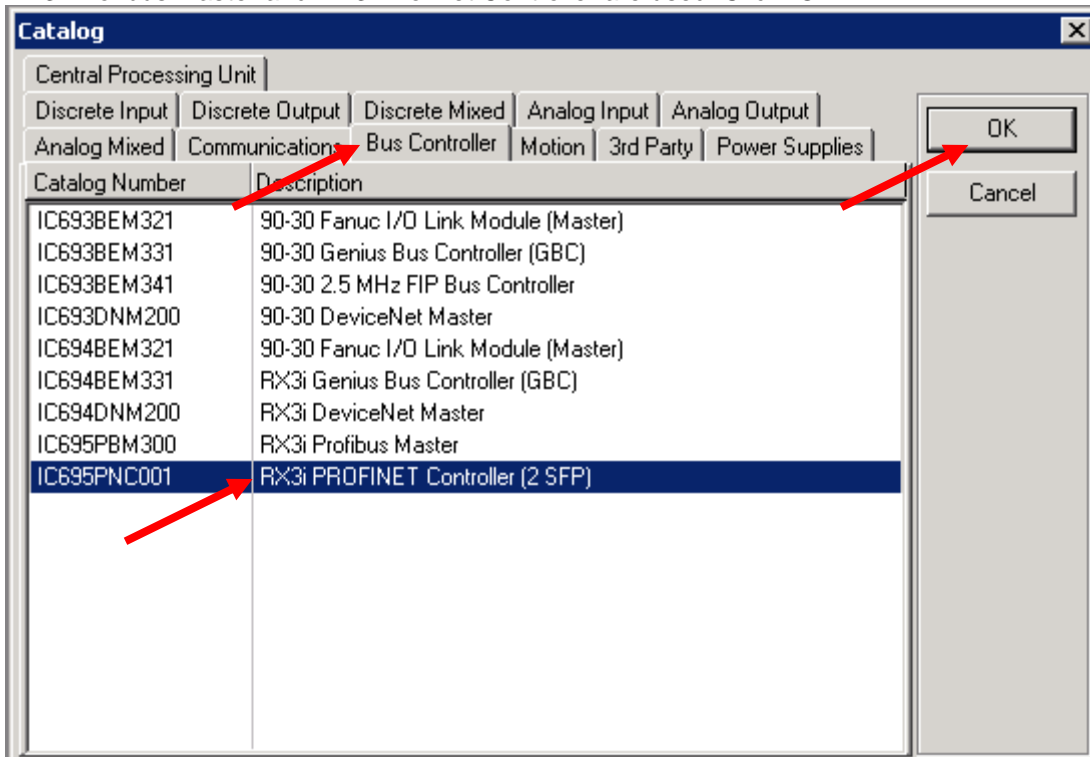


To add the Profinet Controller, right click on the slot the Profinet card is in the chassis and in the pop up window click Add Module



FEN20 Start-up Guide

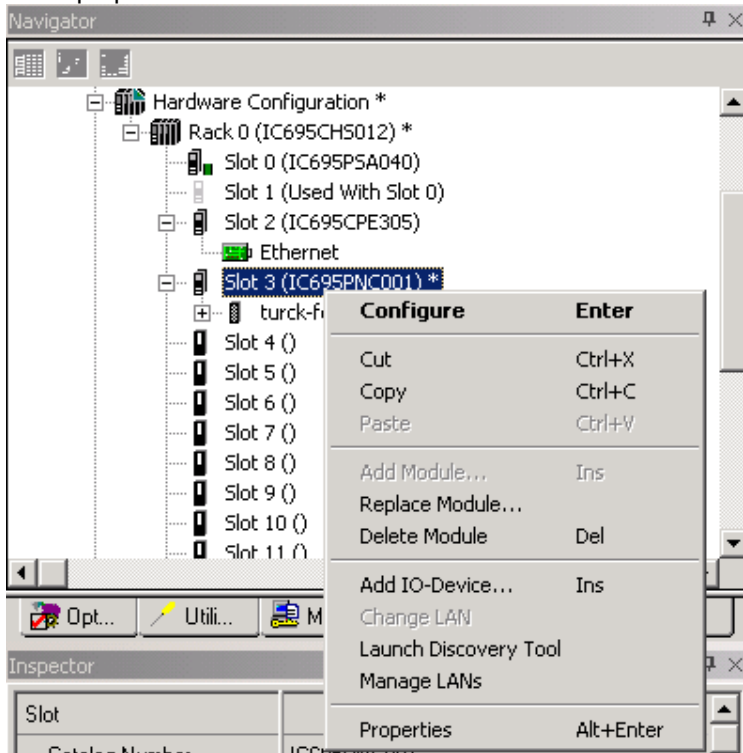
In the Catalog Window, click on the Bus Controller Tab and select communication master. In our example, the RX3i Profibus Master and RX3i Profinet Controller are used. Click "OK".



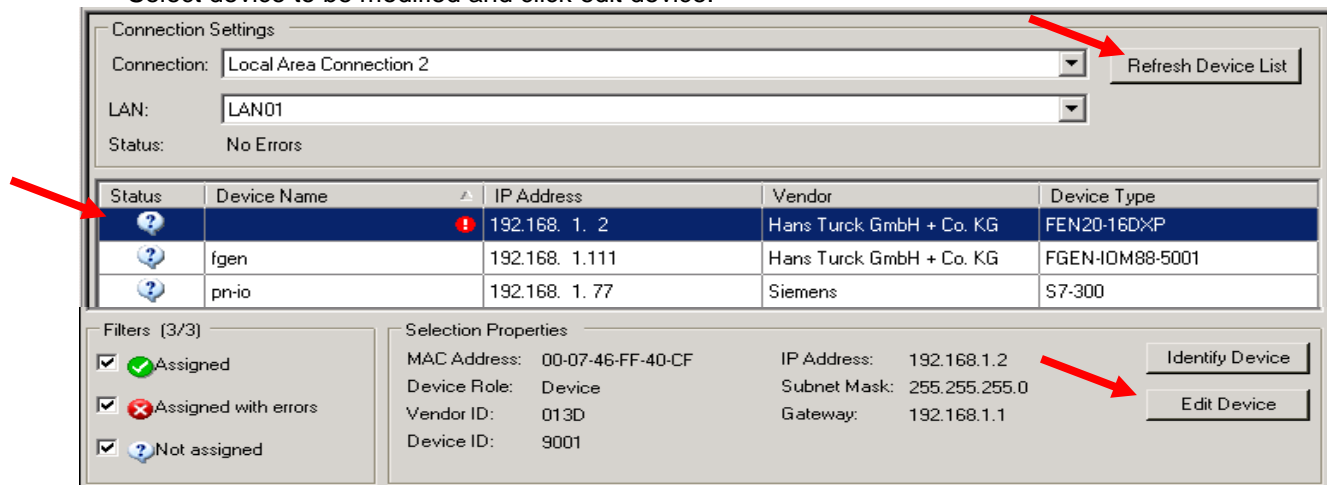
IP Addressing

In Turck products, the IP addressing can be set by either connecting to the Turck Gateway through Pactware, the IP address tool, or through Internet Explorer or modifying the first three octets of the IP Address. The last octet will be set by the rotary dials or dip switches.

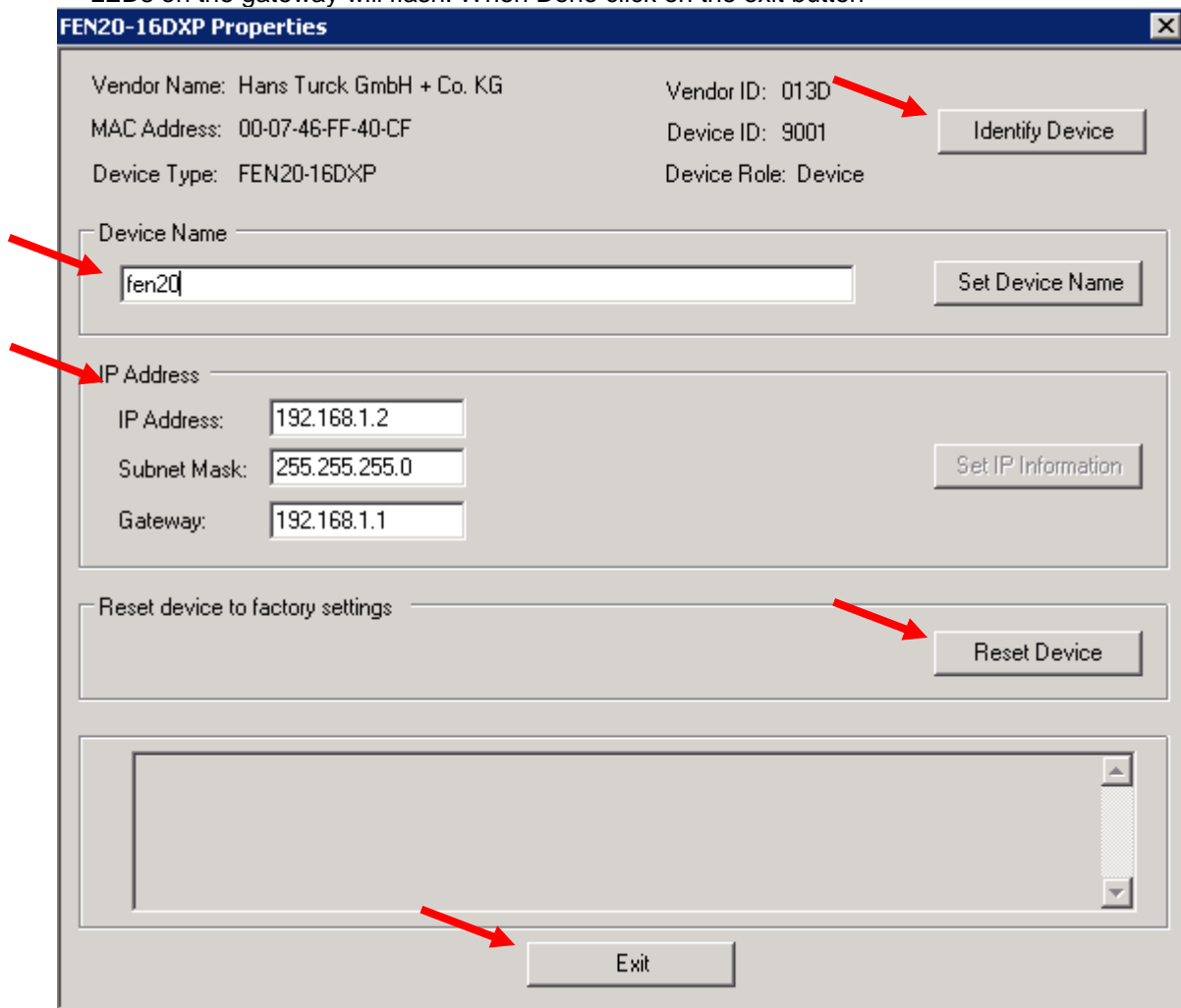
- Right click on the Profinet Controller in the Navigator Window. Select Launch Discovery Tool in the Pop up Window



- Click on Refresh Device List to bring list of devices on the network.
- Select device to be modified and click edit device.

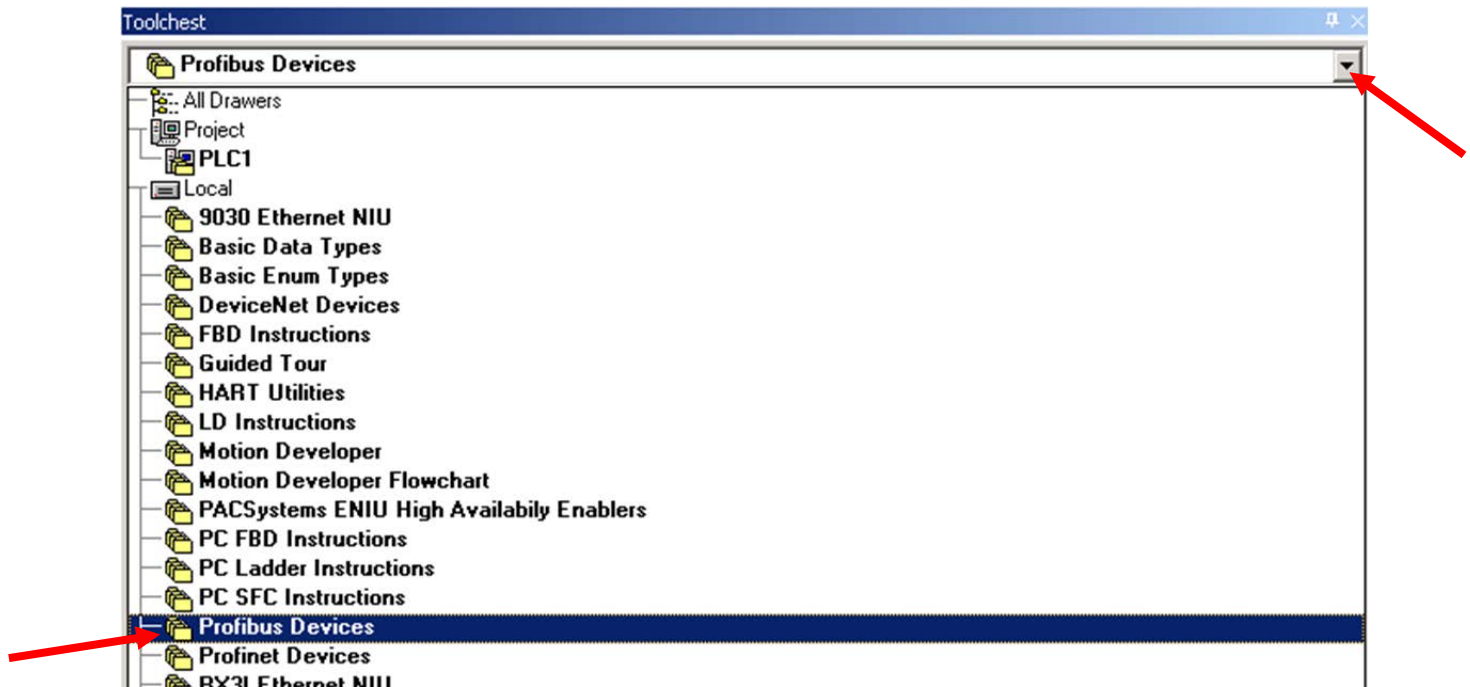


- In the properties window, the Device Name and IP address can be changed. You can also reset the device to factory defaults and identify the device on the network. When identifying the device, the LEDs on the gateway will flash. When Done click on the exit button

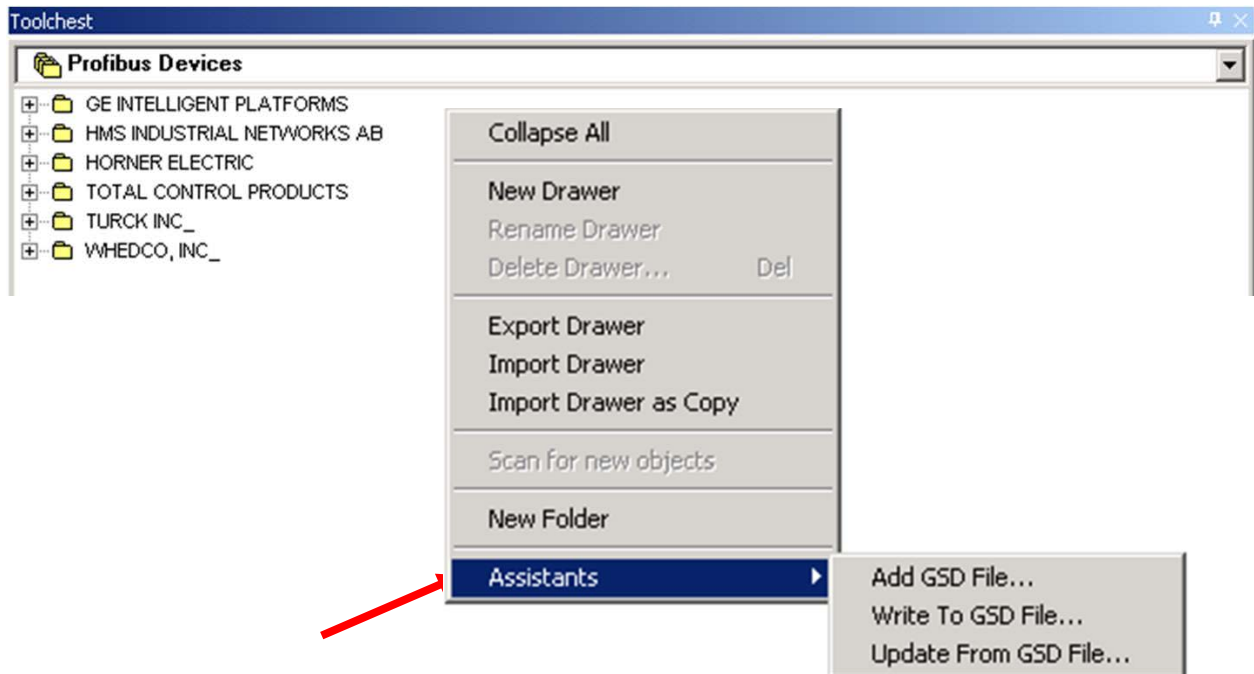


Installing GSD / GSDML Files in the Hardware Configuration

In the Toolchest window click on the dropdown arrow and select a Profibus /Profinet Device.

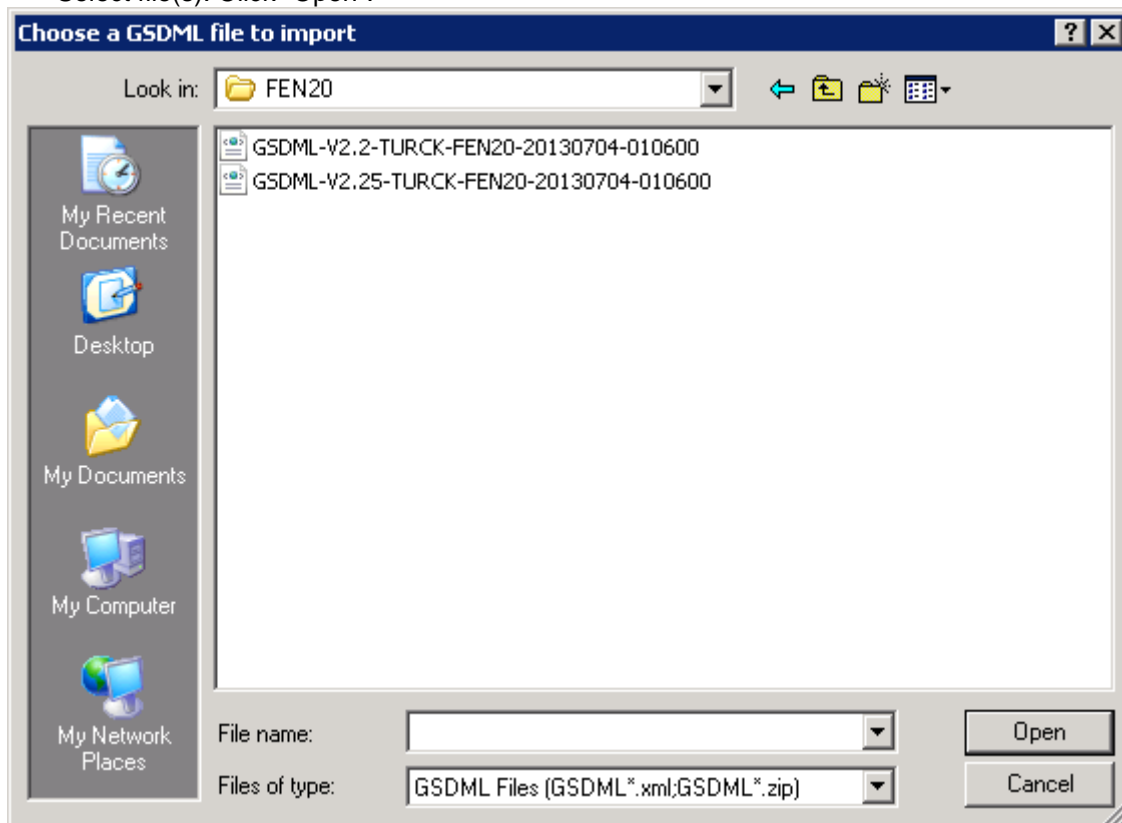


Right mouse click on the Toolchest window, click Assistants -> Add GSD File...



FEN20 Start-up Guide

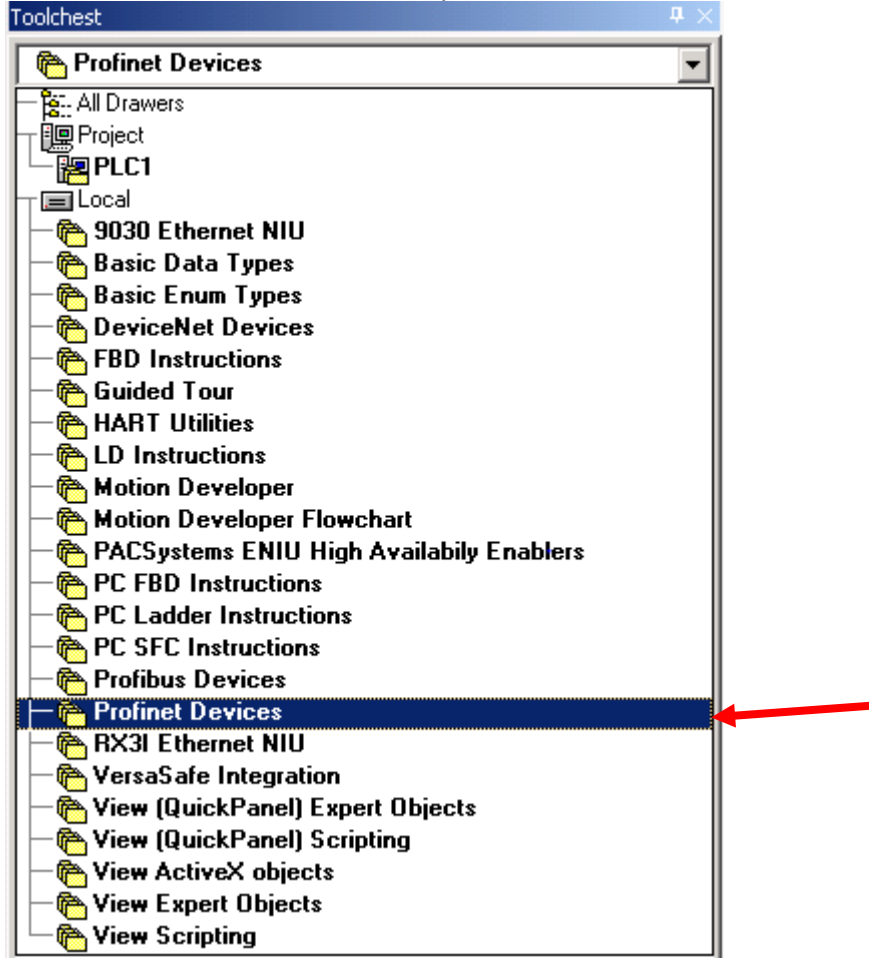
- Browse to the folder where the GSD file is located.
- Select file(s). Click “Open”.



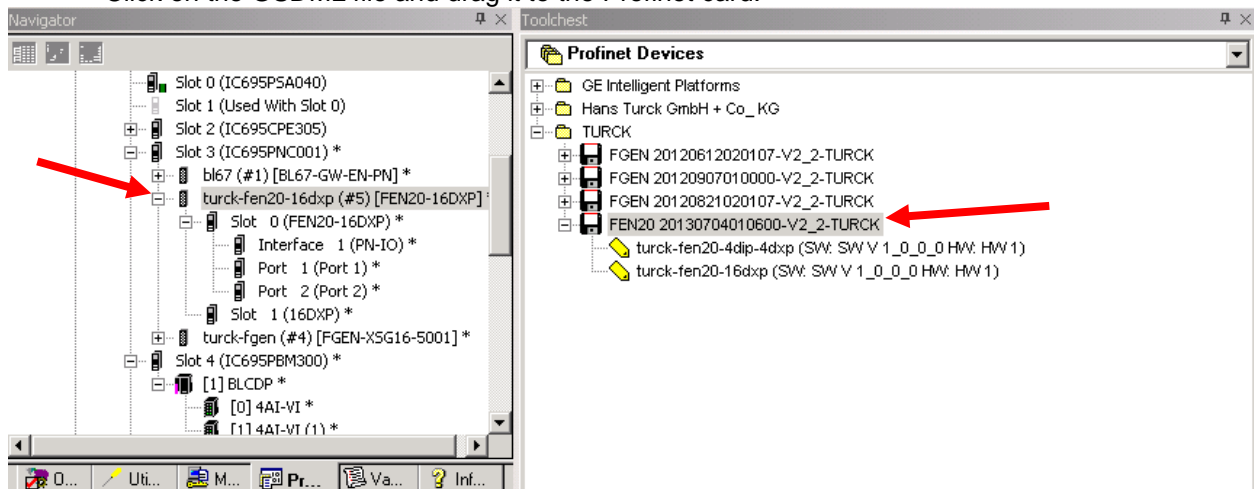
- Note: All files with .GSD are the default GSD files in the English language. Other versions may include GSE (English), GSF (French), and GSG (German) languages.
- All Profinet files are .XML files.

Adding a Profinet Device onto the Network.

- Click on the Profinet Devices drop down in the Toolchest

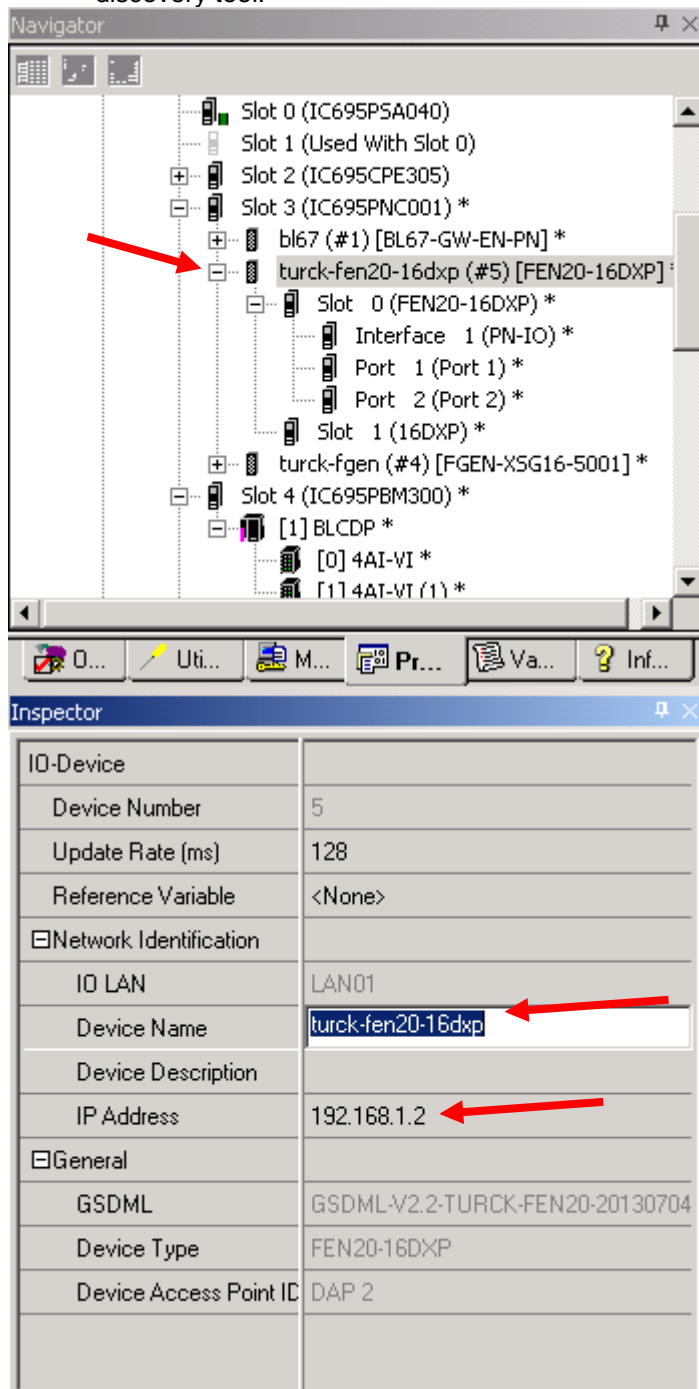


- Click on the folder to open the folder
- Click on the GSDML file and drag it to the Profinet card.



FEN20 Start-up Guide

- Once it is under the Profinet, click on the gateway and the device name and IP Address will be in the Inspector. This must match the configuration downloaded to the gateway when using the network discovery tool.

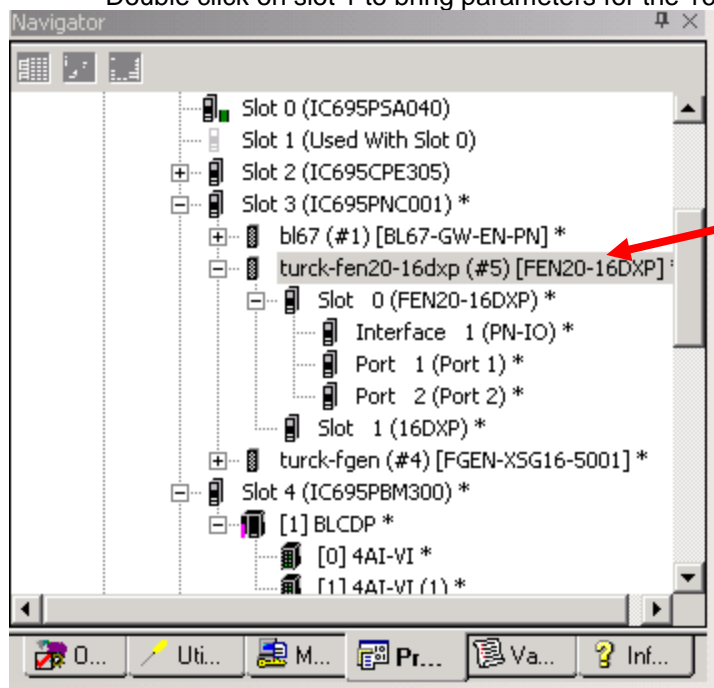


The Navigator window displays a hierarchical tree of hardware components. A red arrow points to the entry 'turck-fen20-16d xp (#5) [FEN20-16DXP]'. Below this, the Inspector window shows the configuration for the selected device:

IO-Device	
Device Number	5
Update Rate (ms)	128
Reference Variable	<None>
<input type="checkbox"/> Network Identification	
IO LAN	LAN01
Device Name	turck-fen20-16d xp
Device Description	
IP Address	192.168.1.2
<input type="checkbox"/> General	
GSDML	GSDML-V2.2-TURCK-FEN20-20130704
Device Type	FEN20-16DXP
Device Access Point ID	DAP 2

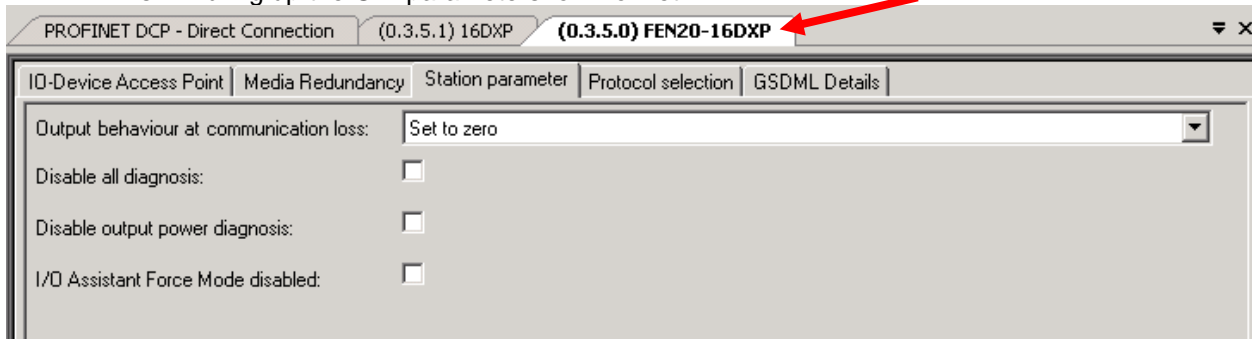
FEN20 Start-up Guide

- Double click on turck-fen20=16dpx to bring up the properties / station parameters of the gateway.
Double click on slot 1 to bring parameters for the 16 DXP points

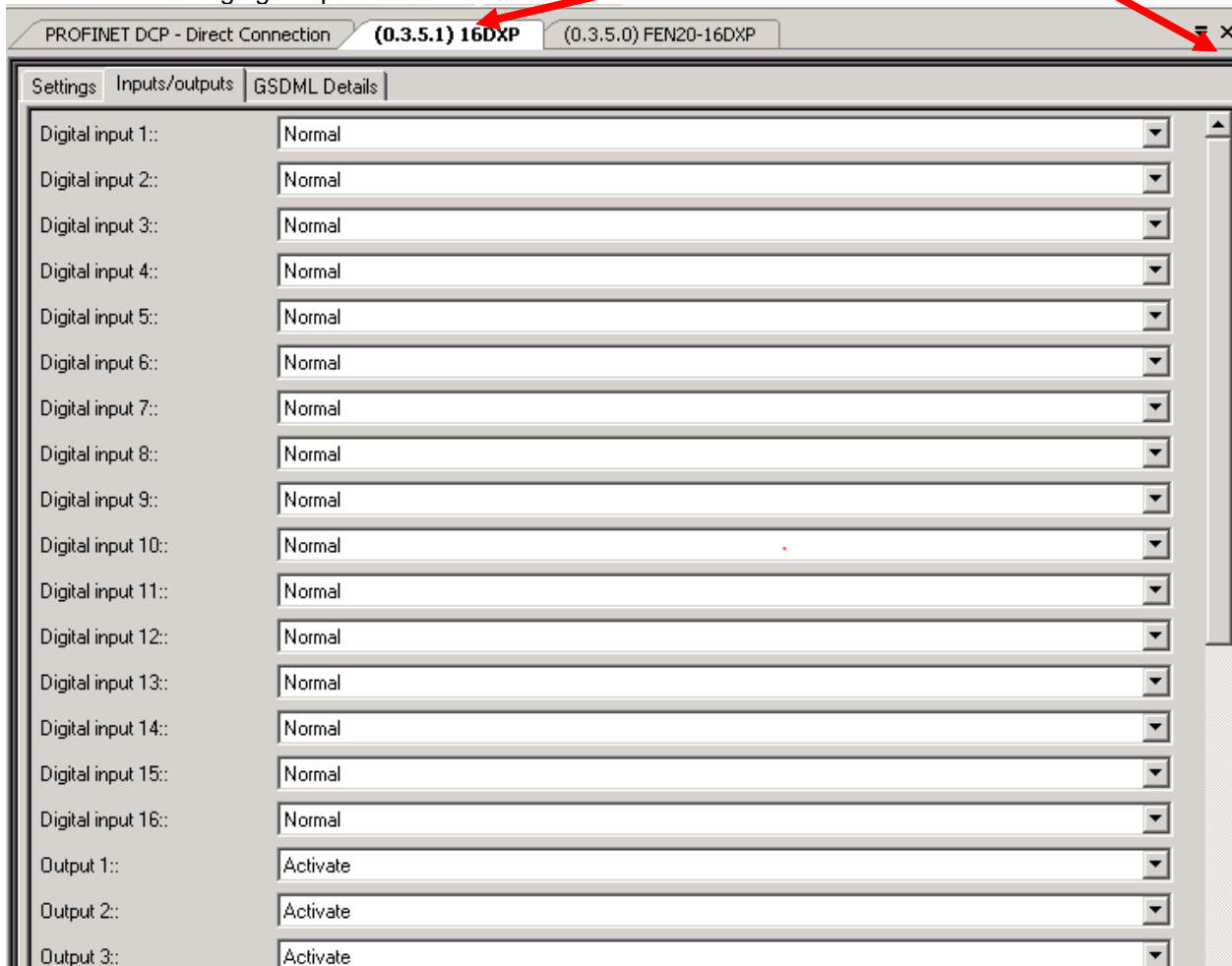


FEN20 Start-up Guide

- This will bring up the GW parameters for Profinet.



- After changing the parameters click the X to close the window.



Modbus TCP Configuration

The following pages contain step by step instructions to set up communication between a Turck FEN20-16DXP multiprotocol slave to a Turck VT250-57x-L7-IPM HMI display. This example will use Modbus TCP communication between the devices.

Hardware

The following hardware was used to create this startup guide.

- VT250-57x-L7-IPM – Turck programmable HMI. (note: any VT250 model can be used following the same steps)
- FEN20-16DXP – Multiprotocol 16 DI/DO slave
- SE-44X-E924 – 9 Port Unmanaged Ethernet Switch
- Ethernet cables
- 24 VDC Power supply

Software

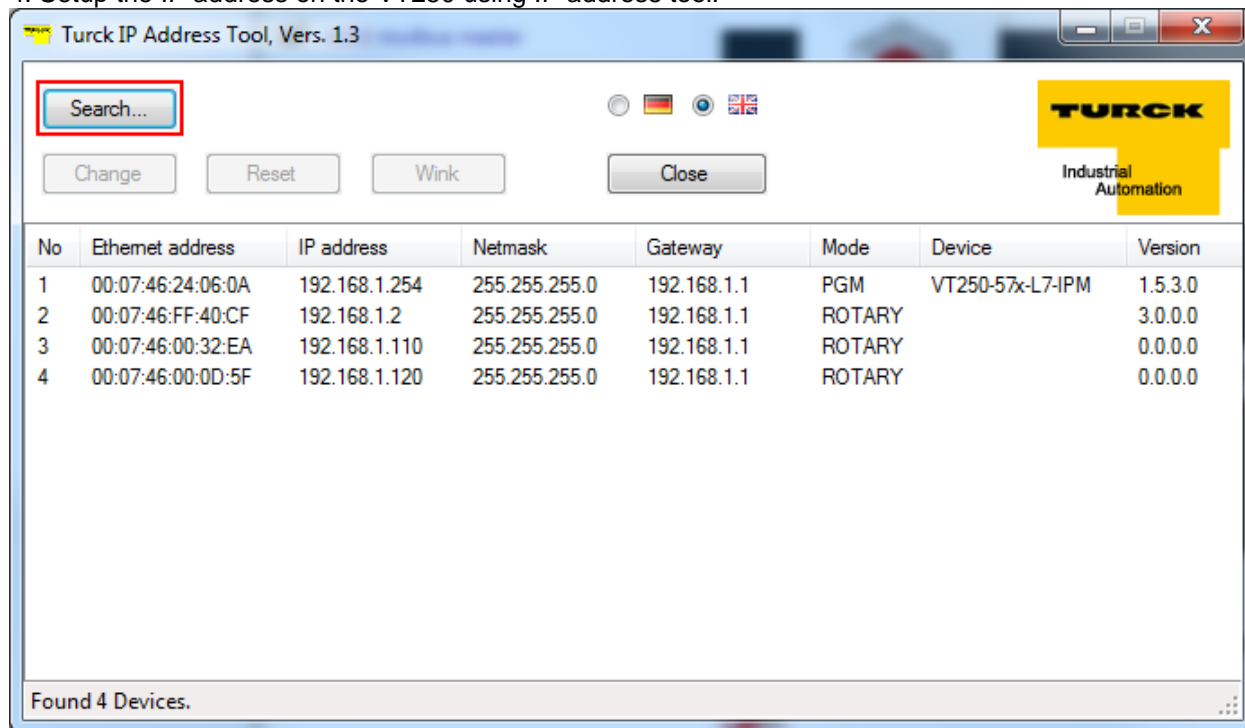
The following software will be required to setup this system:

- CoDeSys V3.5 SP1 Hotfix 1 (can be downloaded from http://pdb.turck.de/media/_en/Anlagen/SW_CoDeSys_v3510.zip)
- Turck IP address tool (can be downloaded from [www.turck-usa.com/Support/Downloads ~ Software/](http://www.turck-usa.com/Support/Downloads/~Software/))

Setup

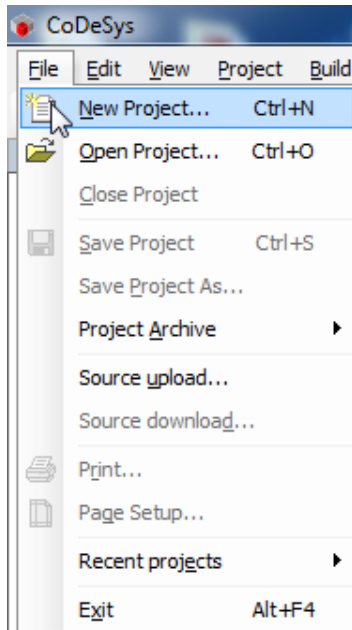
Hardware setup

1. Change the rotary switches on the FEN20 to 0,1,3 to have an IP address of 192.168.1.13
2. Connect VT250 and FEN20 to the Ethernet switch
3. Power up both devices
4. Setup the IP address on the VT250 using IP address tool:

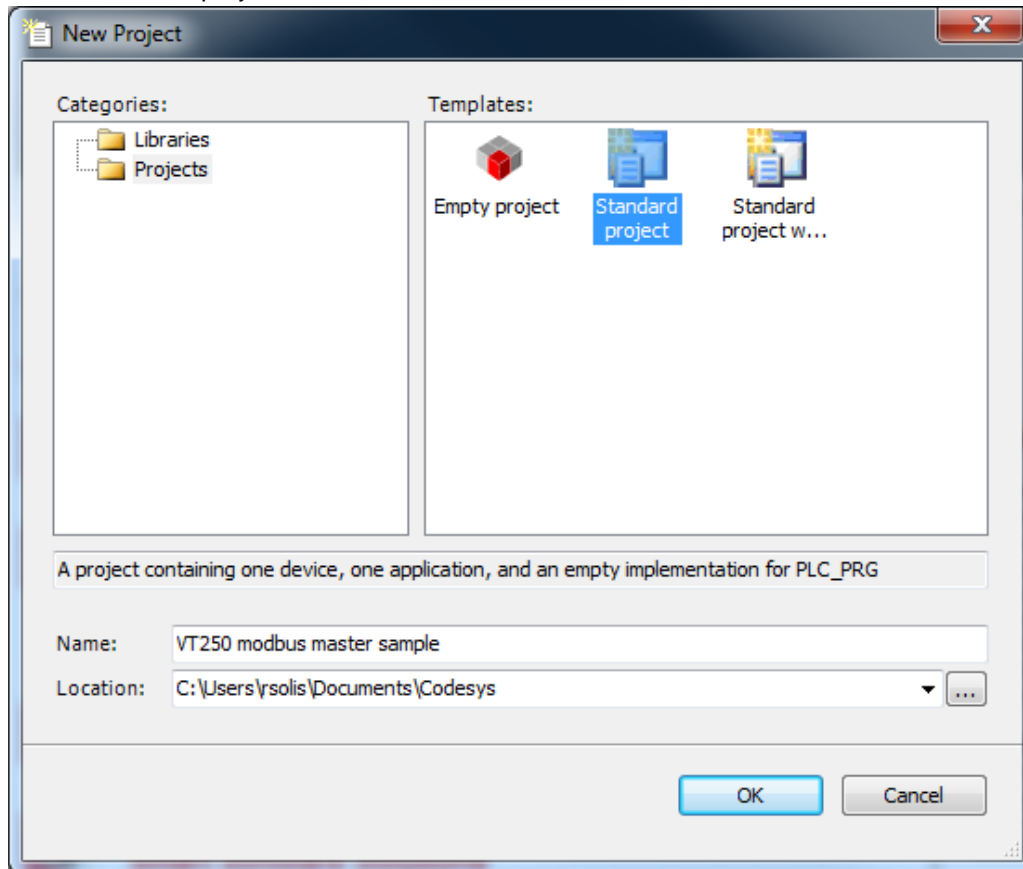


Setting Up the VT250

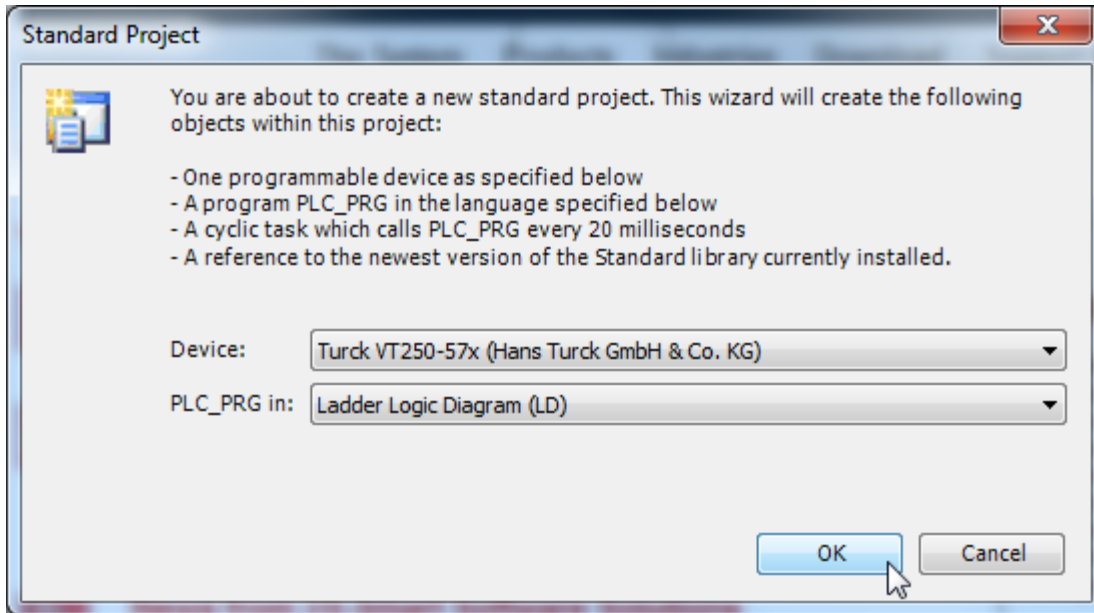
- 1) File, new project



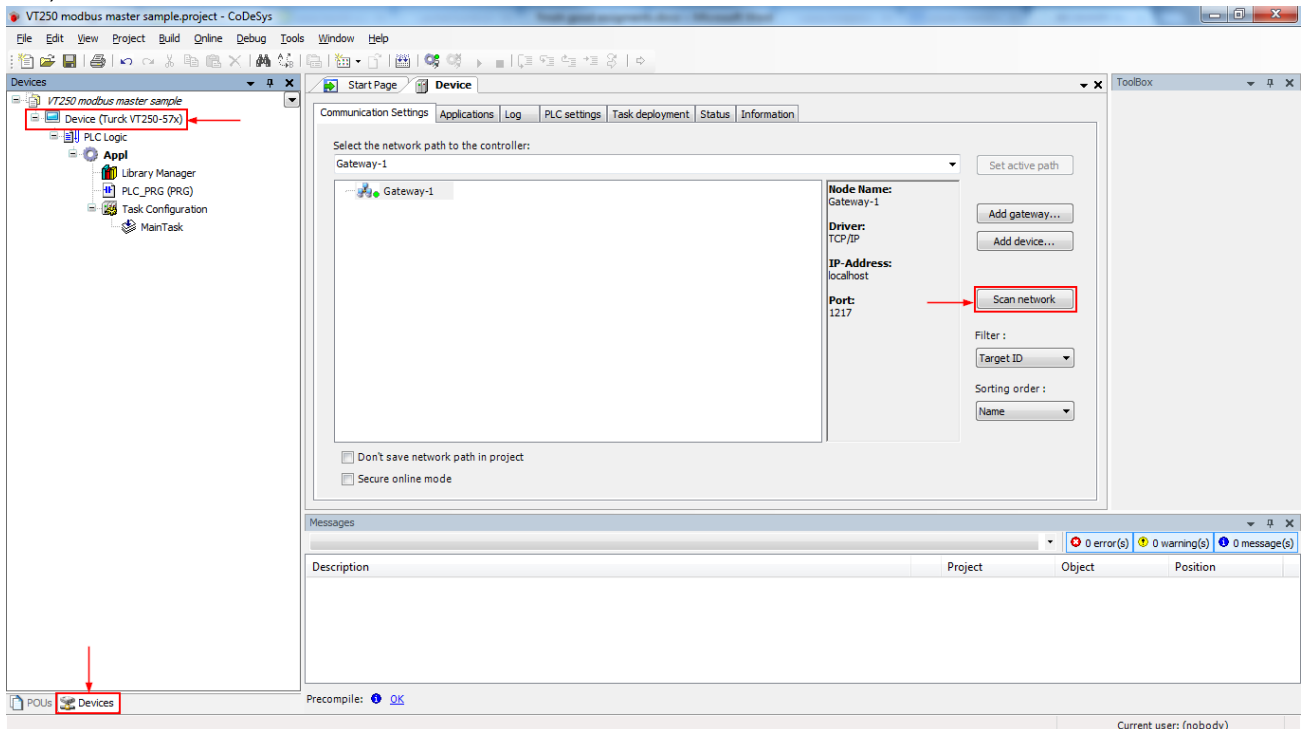
- 2) Select standard project and name it



- 3) Select Turck VT250-57x and click OK

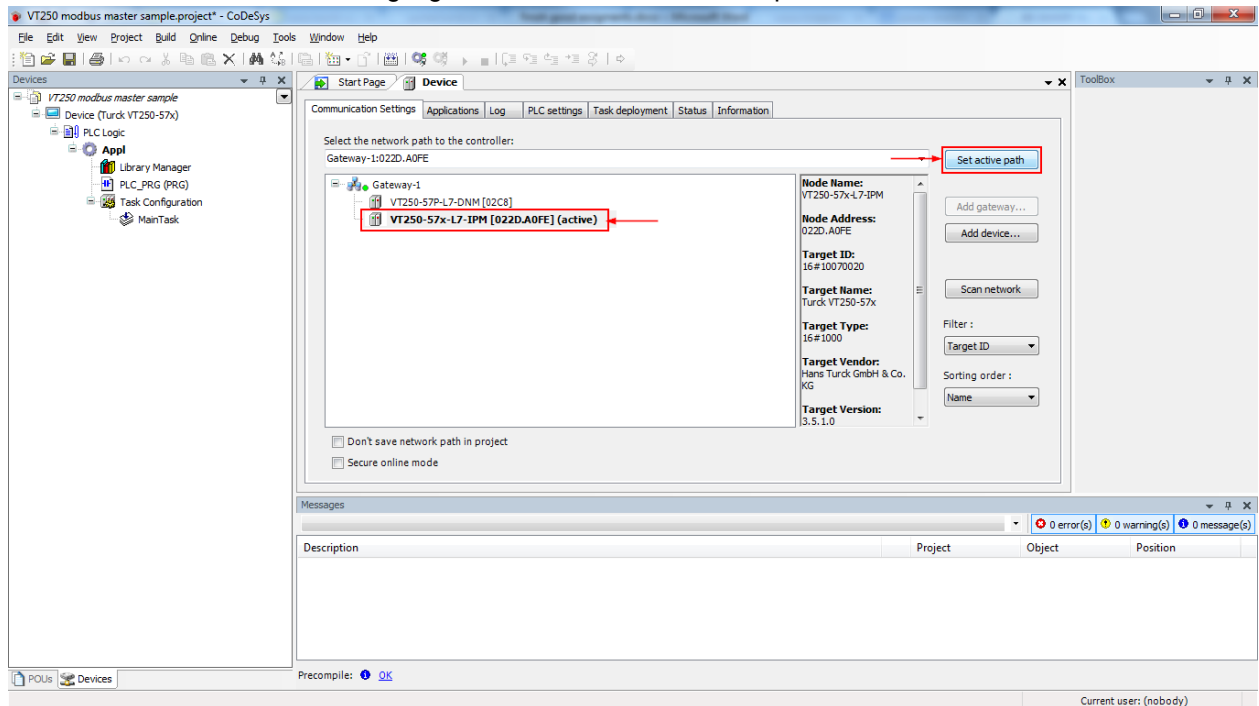


- 4) Configure the communication with VT250 in Codesys. Go to Devices, double click on Device (VT250-57x). Click on scan network to find the connected VT250

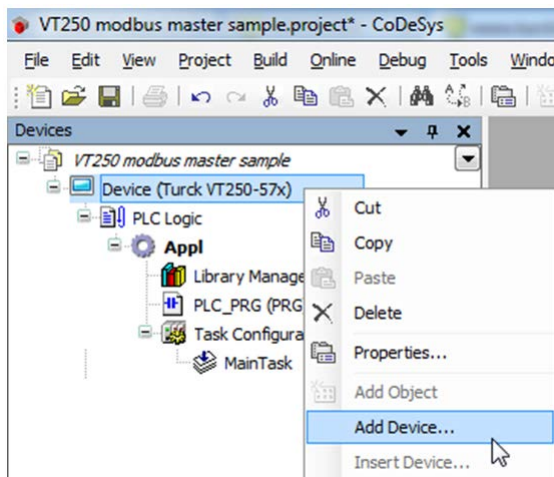


FEN20 Start-up Guide

- 5) Click on the desired VT250 to highlight it and click on “Set active path”. The selection becomes **bold**

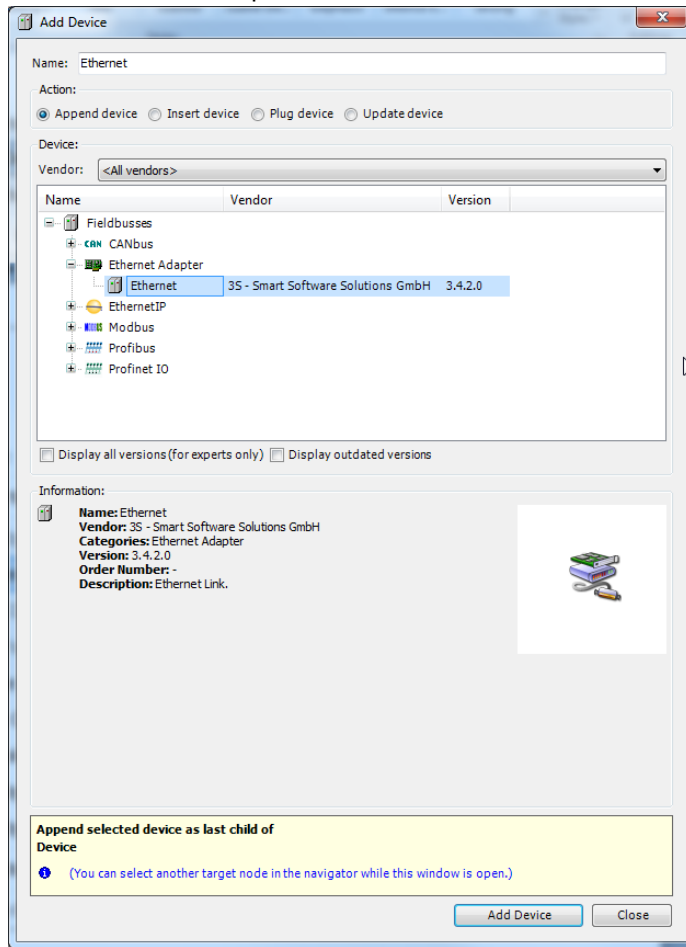


- 6) Right click on “Device (Turck VT250-57x)” and click on “Add device”

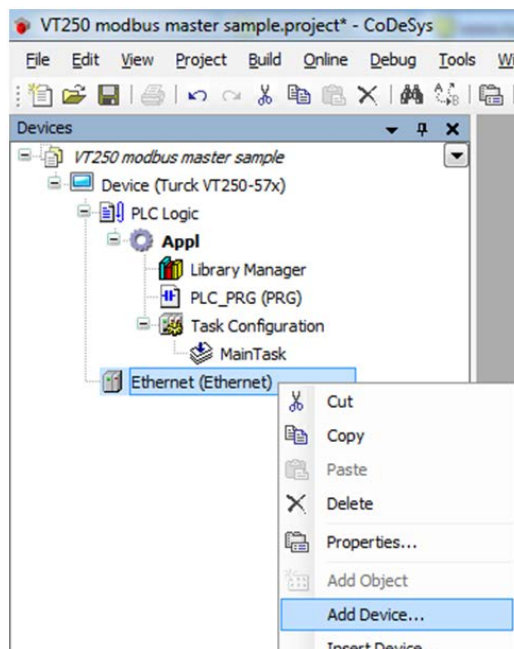


FEN20 Start-up Guide

7) Select “Ethernet adapter” and click “Add device”

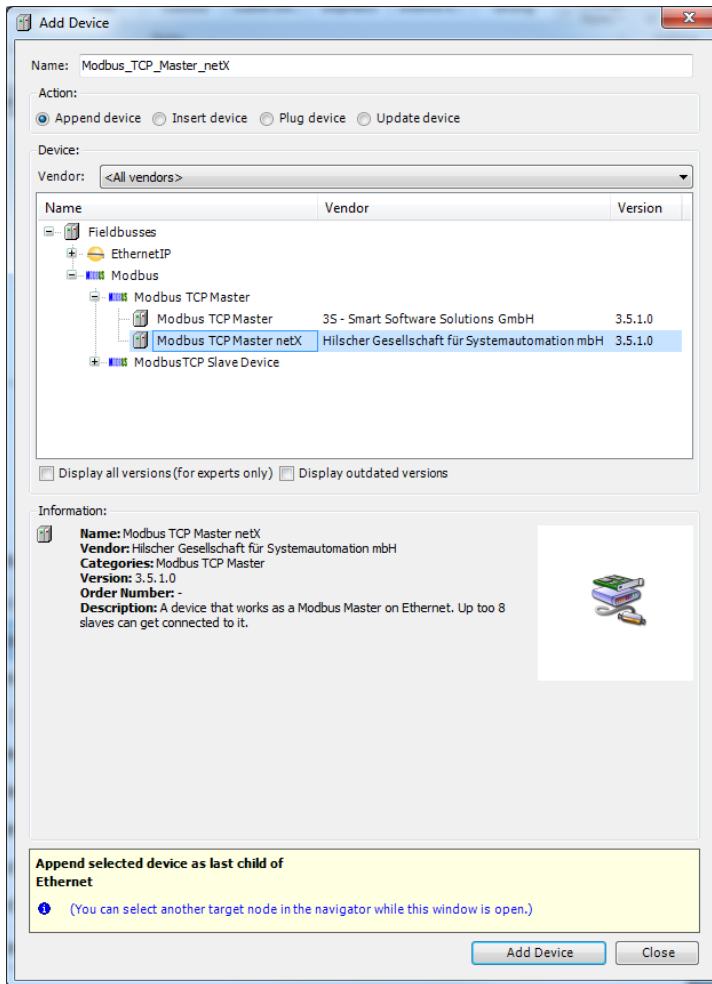


8) Right click on the recently added Ethernet adapter and click “Add device”

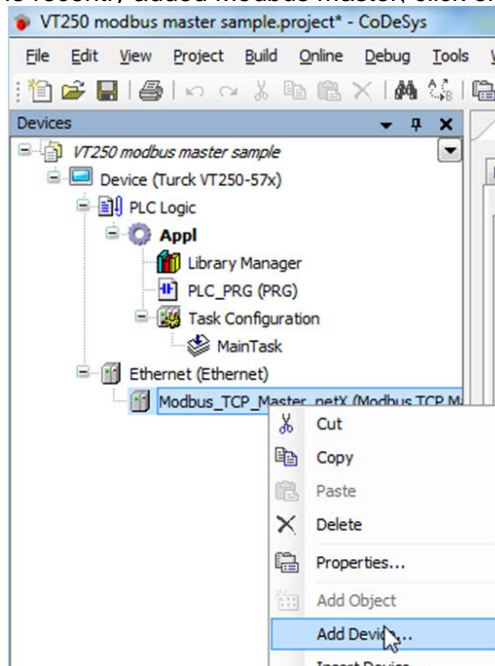


FEN20 Start-up Guide

- 9) Select “Modbus TCP master netX” from the list and click “add device”

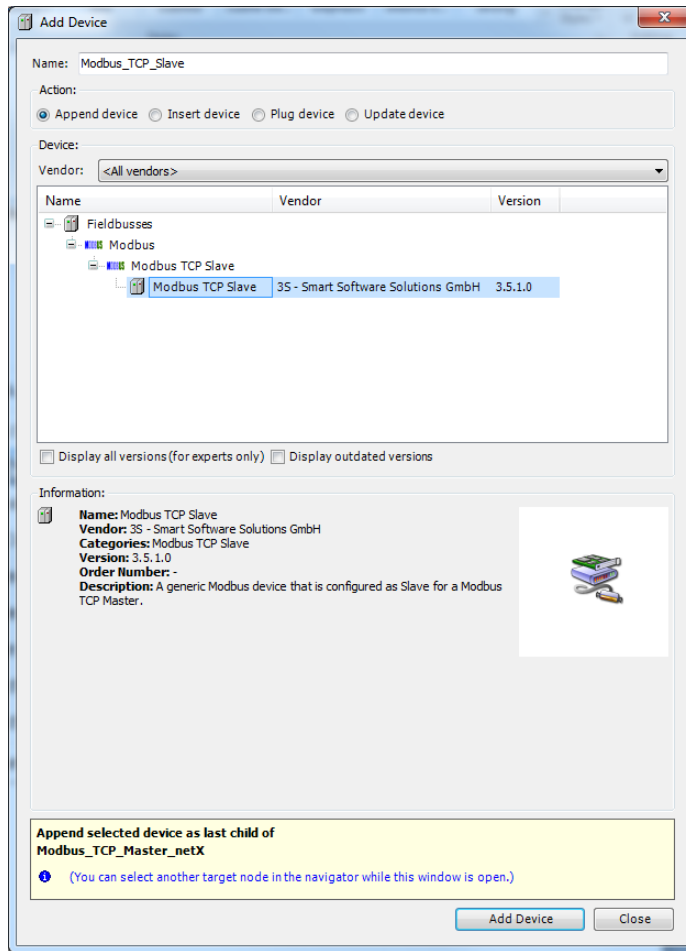


- 10) Right click on the recently added Modbus master, click on “Add device”

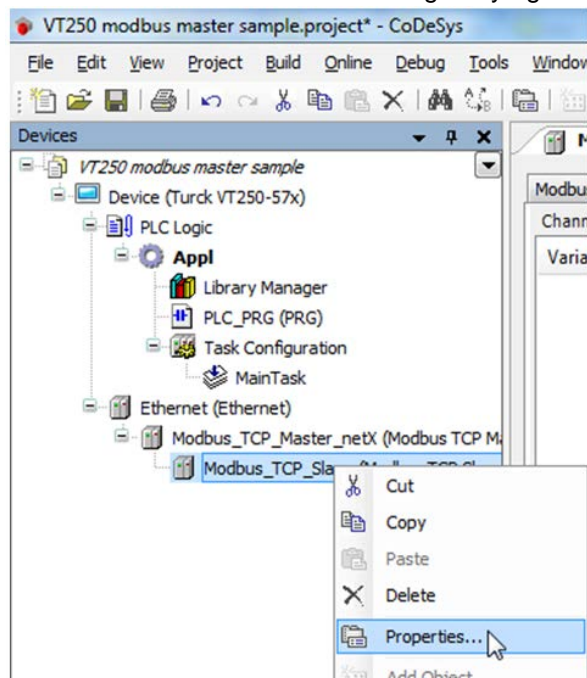


FEN20 Start-up Guide

11) Select Modbus TCP slave

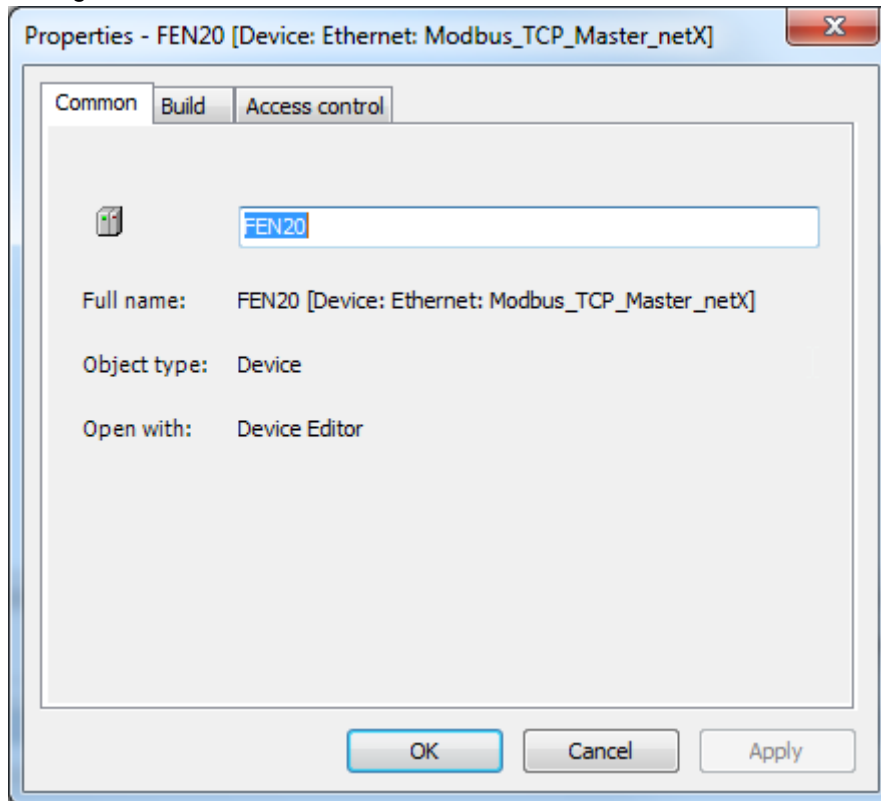


12) This will be the FEN20. Name can be changed by right clicking on it, and click properties

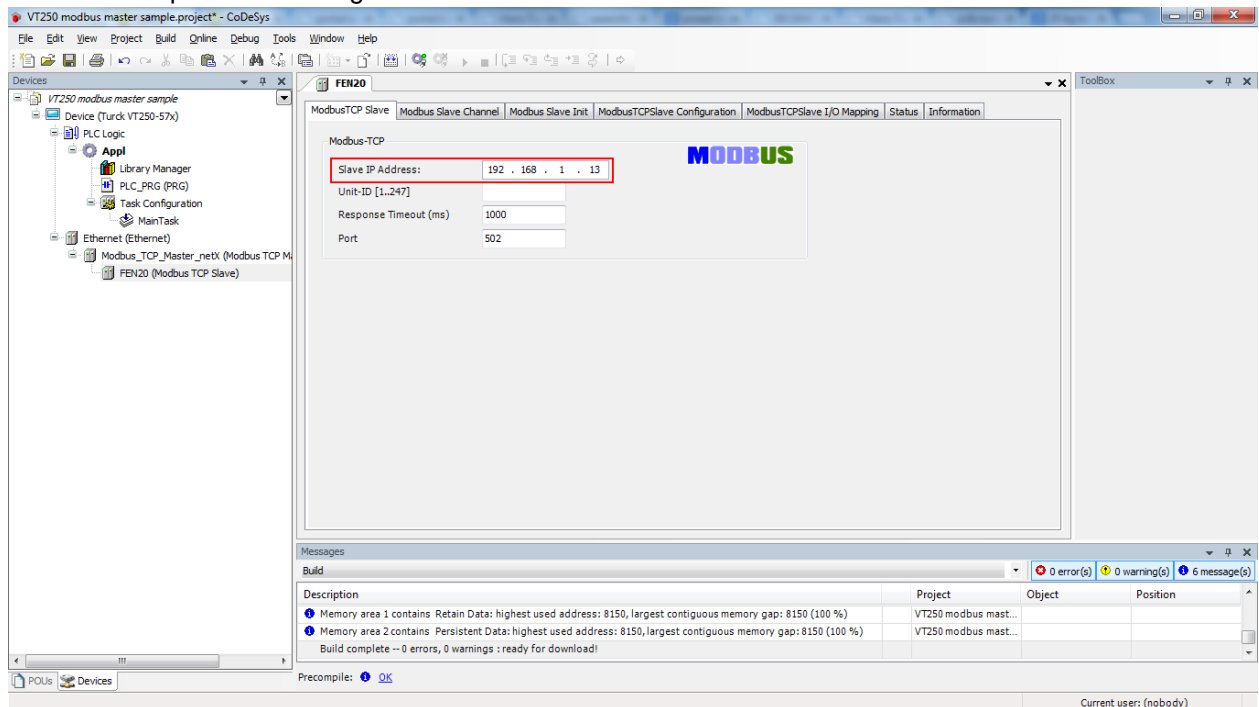


FEN20 Start-up Guide

13) Change name



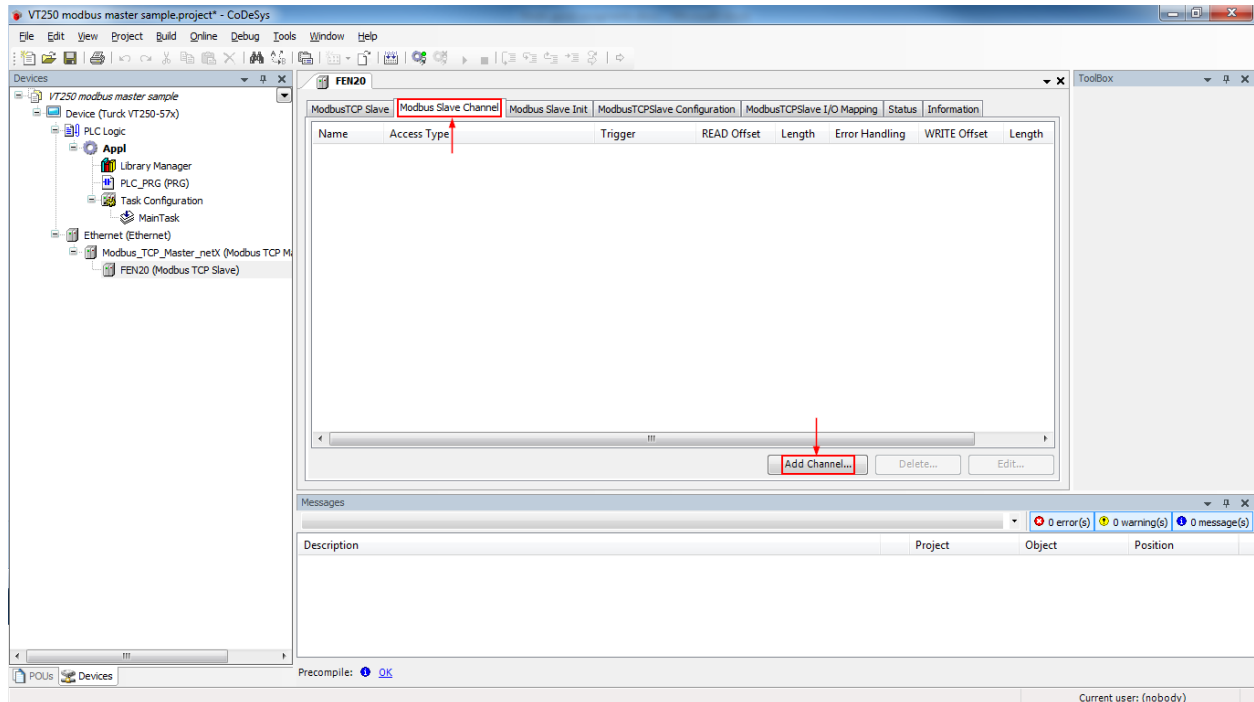
- 14) Double click on the Modbus slave to change its configuration. First we need to assign the IP address. For this example we are using 192.168.1.13



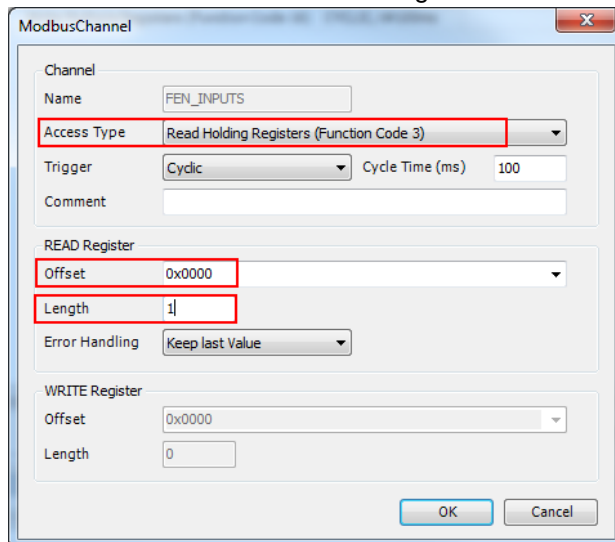
FEN20 Start-up Guide

- 15) The communication between Modbus TCP master and Modbus Slaves is realized via Modbus channels. To configure them click on Modbus Slave Channel tab. The information for this channels is taken from the Modbus TCP data map included on the datasheet
[Insert datasheet datamap]

- 16) Click on Modbus Slave Channel tab then add channel

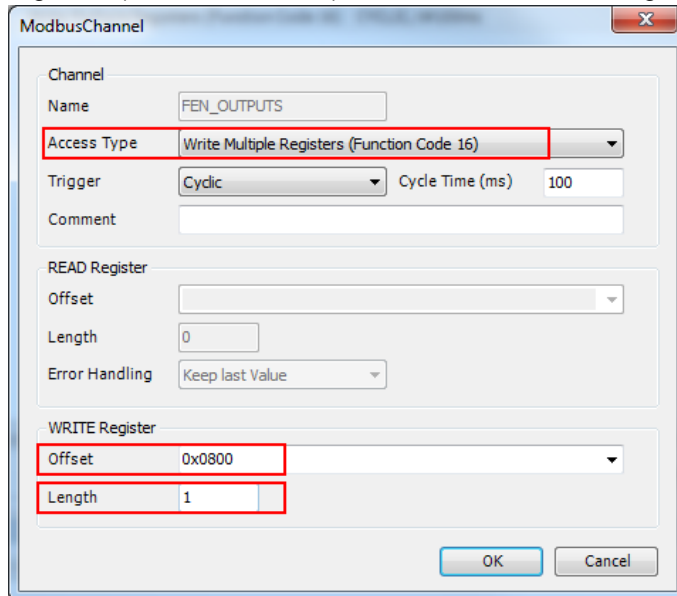


- 17) First we will add the input data. This is using Read Holding Registers (Function Code 3). The offset is the Modbus register indicated on the datamap. Length is the amount of registers (in WORD format). In this case is offset is 0x000 and length 1

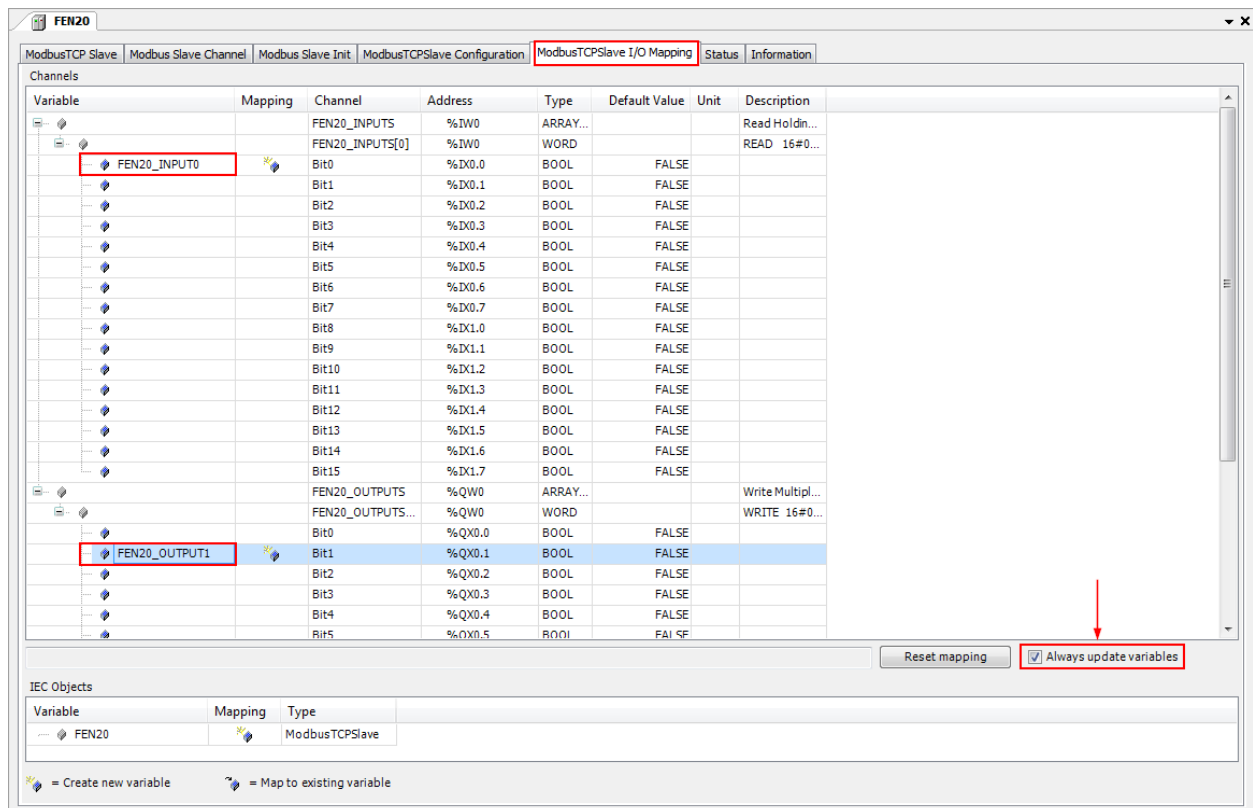


FEN20 Start-up Guide

- 18) Same steps for the outputs. Add channel and use the information from the datamap. Write multiple registers (Function code 16). Offset is 0x0800 and length is 1.

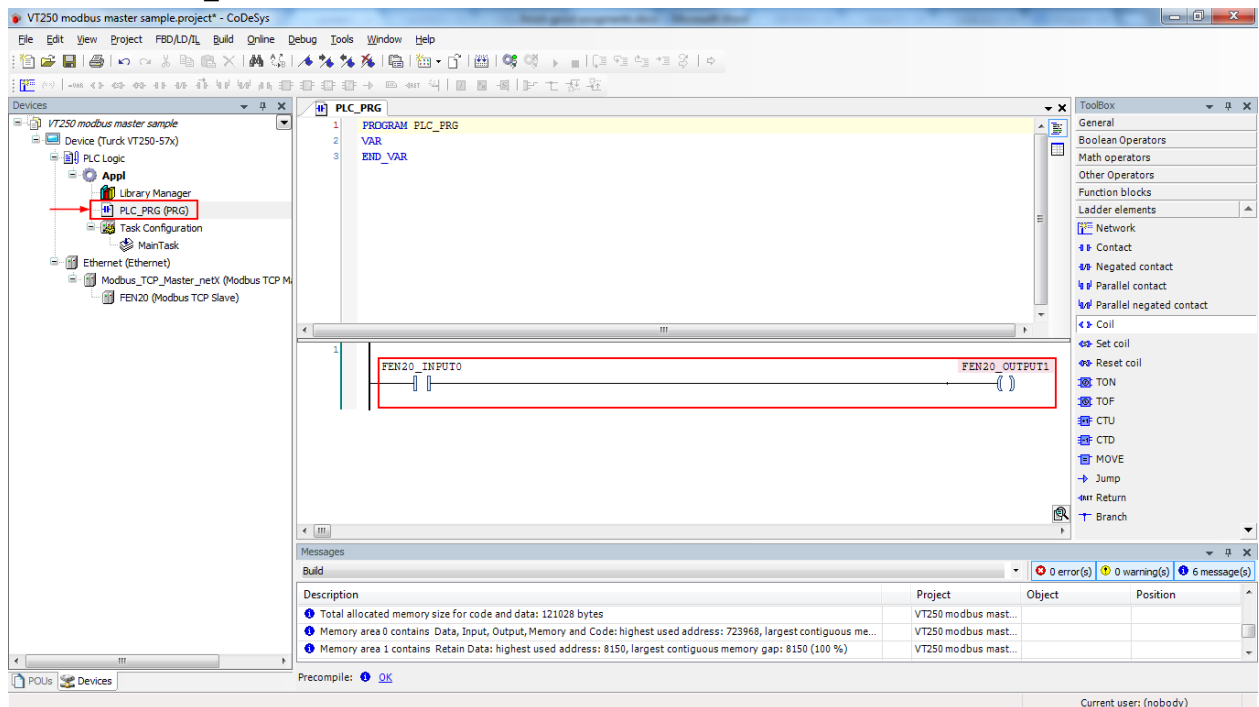


- 19) Once input and output channels are created, go to Modbus TCP Slave I/O mapping tab. We will assign variable names for one input and one output bit (data tags). Make sure that “Always update variables” is enabled

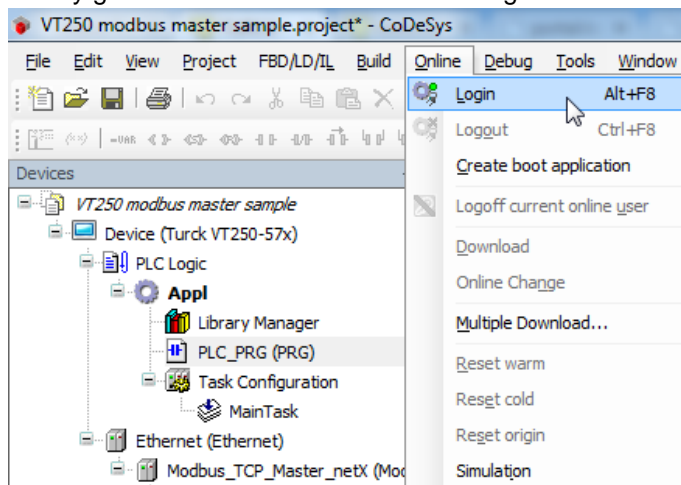


FEN20 Start-up Guide

- 20) Double click on “PLC_PRG” on the devices tree. Create a small logic, when FEN20_INPUT0 is turn ON activates FEN20_OUTPUT1.

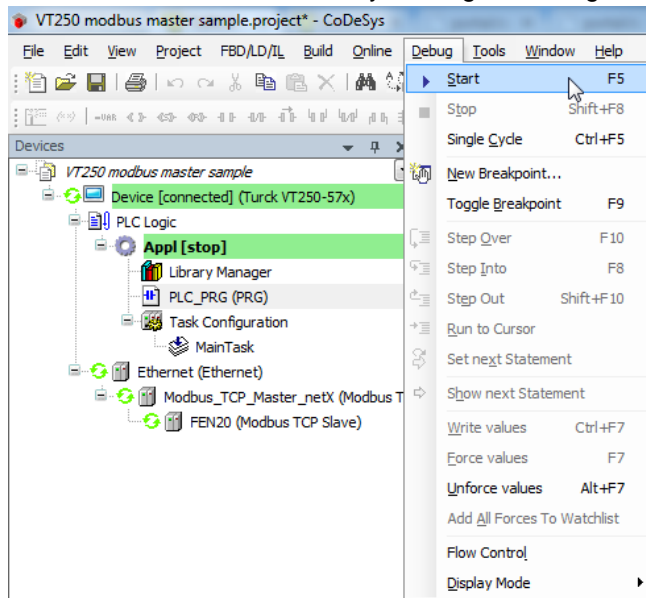


- 21) Finally go to main menu “Online”. Click Login and Yes when prompted.



FEN20 Start-up Guide

22) Put the VT250 on Run mode by clicking on Debug, Start



23) Connect an input to the first input of the FEN20 and turn it on. This will turn the second output on the station.

