

## Datasheet - MSP 452-11/11Y

Rotating spindle limit switch / MSP 452


☒ Preferred typ



- Metal enclosure
- 4 Contacts
- 118 mm x 174 mm x 64 mm
- 2 cable entries

(Minor differences between the printed image and the original product may exist!)

### Ordering details

Product type description	MSP 452-11/11Y
Article number	101160615
EAN code	4030661190815

### Global Properties

Product name	MSP 452
Standards	EN 60947-5-1
Compliance with the Directives (Y/N) 	Yes
Suitable for safety functions (Y/N)	No
Standard housing (Y/N)	No
Materials	
- Material of the housings	cast iron, galvanized
Contact material	Silver
Housing coating	painted
Weight	1735 g
Slide form	Curvature

### Mechanical data

Design of electrical connection	Screw connection
Cable section	

- Min. Cable section	1.5 mm <sup>2</sup>
- Max. Cable section	2.5 mm <sup>2</sup>
AWG-Number	12
Active principle	mechanical
Mechanical life	3.000.000 operations
Design of actuating element	Plunger
actuating torque	20 Ncm
Bounce duration	≤ 1.5 ms
Switchover time	≤ 10 ms
Contact opening	2 x 0,5 mm
Load on spindle	max. 500 N
Max. turning speed of the spindle	max. 200 rpm min. 0,5 rpm
notice	All indications about the cable section are including the conductor ferrules.

## Ambient conditions

---

Ambient temperature	
- Min. environmental temperature	-30 °C
- Max. environmental temperature	+90 °C
Protection class	IP65 to IEC/EN 60529

## Electrical data

---

Design of control element	Normally open contact (NO) / Opener (NC)
Switching principle	Snap switch element
Number of shutters	1 piece / 1 piece
Number of openers	1 piece / 1 piece
Rated impulse withstand voltage U <sub>imp</sub>	4 kV
Rated insulation voltage U <sub>i</sub>	250 V
Thermal test current I <sub>the</sub>	6 A
Utilisation category	AC-15: 230 V / 2,5 A
Max. fuse rating	10 A gG D-fuse

## Dimensions

---

Dimensions of the sensor	
- Width of sensor	118 mm
- Height of sensor	174 mm
- Length of sensor	64 mm
Slide diameter	10 mm

## notice

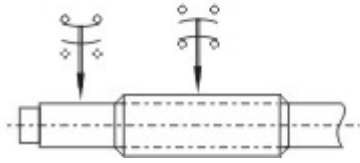
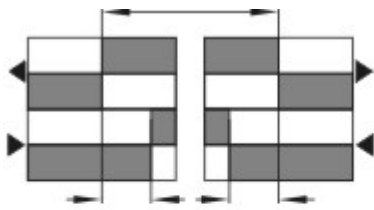
---

This rotating spindle limit switch with snap-action insert is only fit for use in normal to average operating conditions, e.g. for machine tools, cranes and conveyors. Protection class IP 65 to IEC/EN 60529.

By reversing the contacts, the spindle revolutions can be set between 4 and 55 revolutions. The run-out towards each side is at least 5 revolutions.

## Switch travel diagram

---



Notes Switch travel diagram

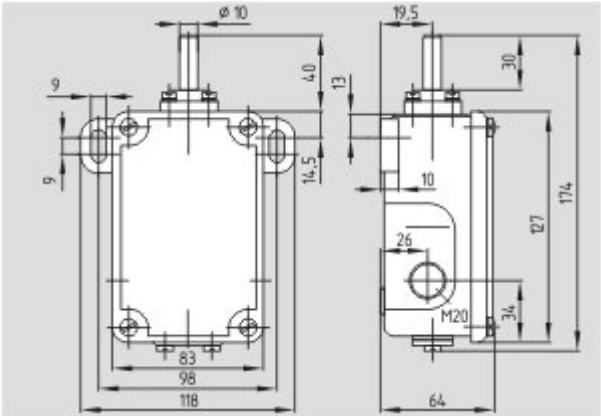
- Contact closed
- Contact open
- Setting range
- Break point
- Positive opening sequence/- angle
- VS** adjustable range of NO contact
- VÖ** adjustable range of NC contact
- N** after travel

### Documents

**Declaration of conformity** (de, en) 83 kB, 03.09.2002

Code: \_\_sonp01

### Images



Dimensional drawing (basic component)

K.A. Schmersal GmbH & Co. KG, Möddinghofe 30, D-42279 Wuppertal  
 The data and values have been checked thoroughly. Technical modifications and errors excepted.  
 Generiert am 13.02.2013 - 20:49:56h Kasbase 2.2.2.F DBI

Image
Image et=sS