



Features & Benefits

- **Tamper-resistant** ... integral actuator arm prevents bypassing by operator.
- **“Positive-break” NC contacts** ... ensure circuit interruption upon only 4.5° of guard displacement.
- **Watertight design** ... meets IP67 washdown and immersion requirements.
- **Rugged, corrosion-resistant housing** ... tolerates the most hostile environments.
- **Meets rigid safety agency standards** ... IEC, BG, UL and CSA.
- **Four 90° actuator head positions** ... provide installation flexibility.

Description

The T.C 235/236 Series are designed for use with hinged movable machine guards which must be closed for operator safety. Their tamper-resistant design and positive-opening NC contacts provide a significantly higher level of safety than conventional, spring-driven limit switches often used to monitor hinged-guard position. Their IP67 rating make them ideal for interlocking safety guards in hostile environments.

Operation

The T.C 235/236 is a single-piece, electromechanical safety interlock switch which is designed to mount to a hinged machine guard. After opening the guard only 4.5°, the unit's positive-break, normally-closed contacts are forced to open by a direct (non-resilient) actuating mechanism. These positive-break contacts ensure circuit interruption (and machine stoppage).

Typical Applications



The T.C 235/236 is intended for use as a safety interlock switch on hinged, movable machine guards which, when open, expose operator/maintenance personnel to machine hazards. Their sealed design (IP67) and oil-tolerant seals make them ideal for use in hostile environments.

AVAILABLE STANDARD MODELS

Part Number	Contacts (Guard Closed)	Description*
T3C235-11Z T3C236-11Z	1 NO & 1 NC	Hinged safety interlock switch with actuating lever to right in rest position
T3C235-02Z T3C236-02Z	2 NC	
T3C235-01Z T3C236-01Z	1 NC	
T4C235-11Z T4C236-11Z	1 NO & 1 NC	Hinged safety interlock switch with actuating lever vertical to switch body in rest position
T4C235-02Z T4C236-02Z	2 NC	
T4C235-01Z T4C236-01Z	1 NC	
T5C235-11Z T5C236-11Z	1 NO & 1 NC	Hinged safety interlock switch with actuating lever to left in rest position
T5C235-02Z T5C236-02Z	2 NC	
T5C235-01Z T5C236-01Z	1 NC	

*The actuator head may be rotated into any one of four 90° positions.

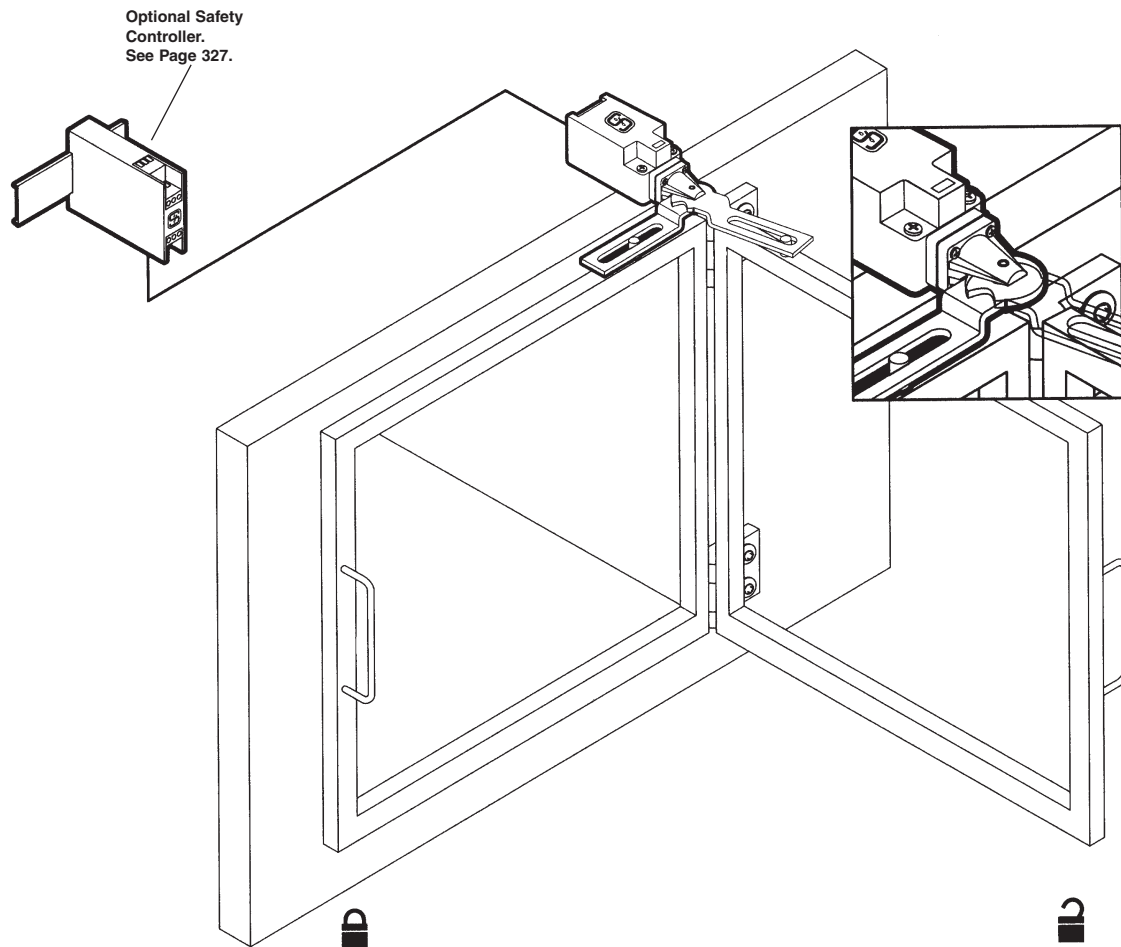
T.C 235/236 TECHNICAL DATA

MECHANICAL SPECIFICATIONS

Housing	(Series 235): Diecast zinc, enamel finish (Series 236): Glass-fiber, reinforced, self-extinguishing thermoplastic
Displacement Angle for Contact Opening	4.5°
Degree of Protection	IP67
Operating Temperature	-22°F to +175°F
Mechanical Life	>106 operations
Operating Rate	5,000 operations/hour (maximum)
Conformity to Standards	IEC 947-5-1 EN 60947-5-1 DIN VDE 0660-200 BG-GS-ET15 DIN-EN50047 UL CSA

ELECTRICAL SPECIFICATIONS

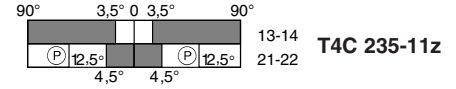
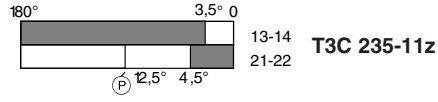
Contacts	Fine silver
Contact Configuration	Double-pole, double-break with electrically-separated contact bridges
Contact Rating	4A (230VAC) 2.5A (400VDC) 1A (500VAC)
Switching Action	Slow-action, positive-break NC contacts
Short Circuit Protection	Fuse 6A (time-delay) as a positive-break switch
Rated Insulation Voltage	500VAC
Rated Impulse Withstand Voltage	6kV
Electrical Connections	Screw terminals with self-lifting clamps for 13AWG (2.5mm ²) maximum wire size



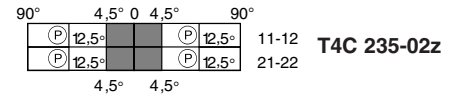
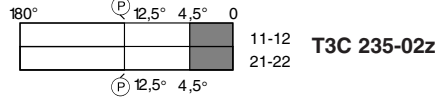
T.C 235 TECHNICAL DATA

Contact function diagrams

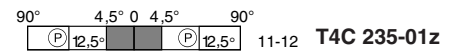
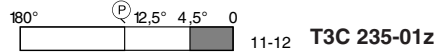
Slow action
1 NO + 1 NC



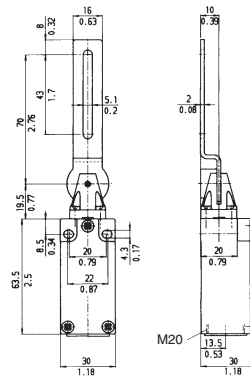
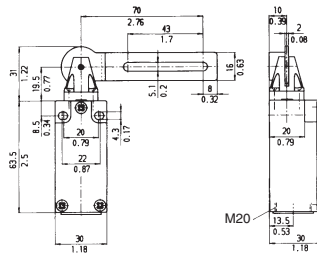
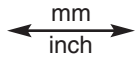
Slow action
2 NC



Slow action
1 NC



Dimensions



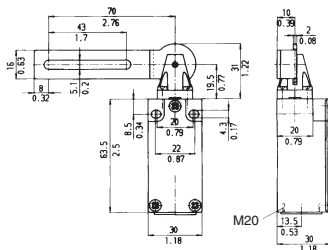
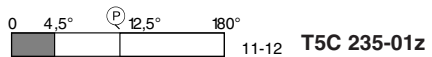
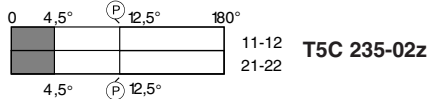
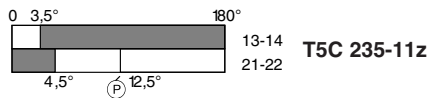
Types of Actuator Levers

Lever 3 C

Lever 4 C

Part No.	Configuration	Slow action	T3C 235-11z	T4C 235-11z
13-14 21-22	1 NO + 1 NC			
11-12 21-22	2 NC			
11-12	1 NC			

T.C 235 TECHNICAL DATA



Lever 5 C

T5C 235-11z

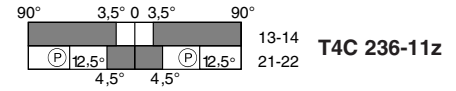
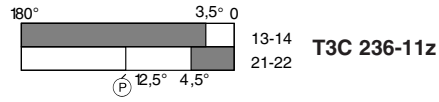
T5C 235-02z

T5C 235-01z

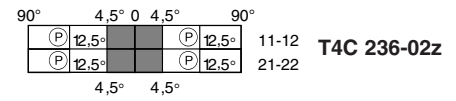
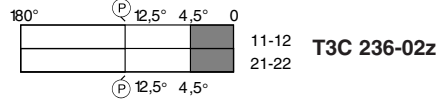
T.C 236 TECHNICAL DATA

Contact function diagrams

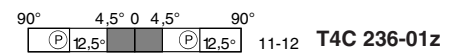
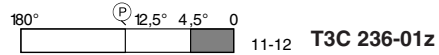
Slow action
1 NO + 1 NC



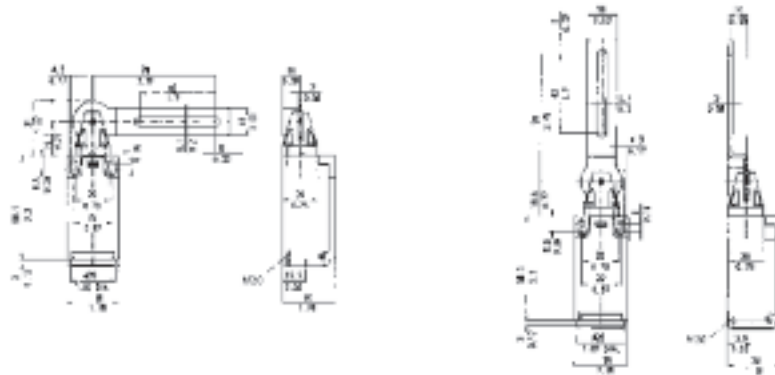
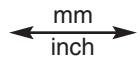
Slow action
2 NC



Slow action
1 NC



Dimensions



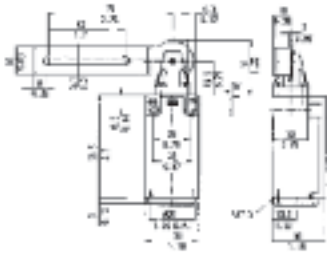
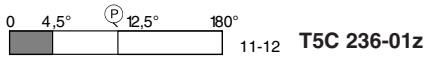
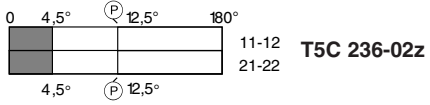
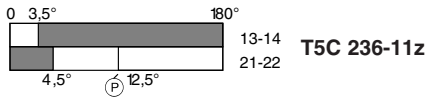
Types of Actuator Levers

Lever 3 C

Lever 4 C

Part No.	13-14 21-22	Slow action	T3C 236-11z	T4C 236-11z
	11-12 21-22	Slow action	T3C 236-02z	T4C 236-02z
	11-12	Slow action	T3C 236-01z	T4C 236-01z

T.C 236 TECHNICAL DATA



Lever 5 C

T5C 236-02z