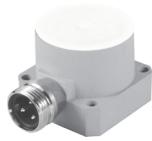


Inductive Rectangular Sensors



Housing Style - Rectangular	Part Number	ID Number	Features	Embeddable	Sensing Range (mm)	Output
Q50 - Nonembeddable, <i>minifast</i>® Connector 	Ni20-Q50-ADZ30X2-B1131/S34	T4265200	<i>Weld-Field Immune</i>		20	2-Wire AC/DC
Q50 - Nonembeddable, <i>microfast</i>® Connector 	Ni20-Q50-ADZ30X2-B3131/S34	T4265290	<i>Weld-Field Immune</i>		20	

For detailed sensor specifications see Section M.
 Normally Closed versions available upon request, consult factory.



Voltage	Switching Freq. (Hz)	Operating Current (mA)	Operating Temp. (°C)	Protection	Housing	Front Cap/Face	Power LED	Output LED	Mating Cord, Cable Length/Jacket	Wiring Diagram #	Wiring Diagrams
10-300 VDC 20-250 VAC	30	≤400/300	-25 to +70	IP 67	AL	Teflon	GN	YE	RKM 30-*M	1	<p>Diagram 1</p> <p>Diagram 2</p>
	30	≤400/300	-25 to +70	IP 67	AL	Teflon	GN	YE	KB 3T-*	2	

Rectangular

For material descriptions see page M36.