

**multibox® eurofast® Terminal Chamber, 2 Signals Per Port**

- 4-Port, Plastic or Metal Housing
- 12 A Total
- Power Supply Isolation Option
- Plug-in Terminal Cover with Spring Clamps or Screw Terminal

**4-port, 10-30 VDC, 2 Signals Per Port, Isolated Power Supply Optional, Plastic Housing Termination Style**

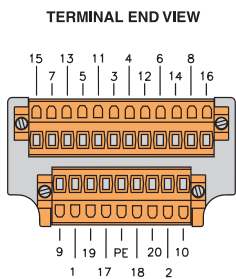
Application	Specifications	Pinout		Spring Clamp	Screw Terminals
4-port J-box 2 signals per port Jumper option for isolation between odd and even ports Terminal chamber connection - spring clamp or screw terminals	3 A/port, 10 A per power supply 12 A total 5-pin <b>euromfast</b> connector 2(green) power LED 2(yellow) signal per port LEDs cable diameter 5-12mm	Function	Terminal Pin	4MB12-5P4-K-FK	4MB12-5P4-K-SK
		Port 1/Signal 1	1		
		2/1	2		
		3/1	3		
		4/1	4		
		Port 1/Signal 2	9		
		2/2	10		
		3/2	11		
		4/2	12		
		+V	17		
		-V	18		
		+V	19		
		-V	20		
Ground	PE				

**4-port, 10-30 VDC, 2 Signals Per Port, Shielded Metal Housing Termination Style**

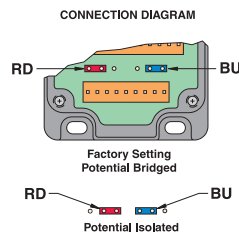
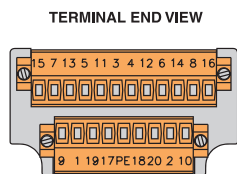
Application	Specifications	Pinout		Spring Clamp	Screw Terminals
4-port J-box 2 signals per port Termination chamber connection - spring clamp or screw terminals	3 A/port, 10 A/power supply 12 A total 5-pin <b>euromfast</b> connector 1(green) power LED cable diameter 19-14mm	Function	Terminal Pin	4MB12-5P1-MS-FK	4MB12-5P1-MS-SK
		Port 1/Signal 1	1		
		2/1	2		
		3/1	3		
		4/1	4		
		Port 1/Signal 2	9		
		2/2	10		
		3/2	11		
		4/2	12		
		+V	17		
		-V	18		
		+V	19		
		-V	20		
Ground	PE				

**Functional Wiring Diagrams**

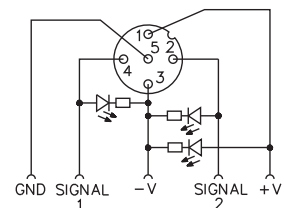
**Spring Clamp**



**Screw Terminal**



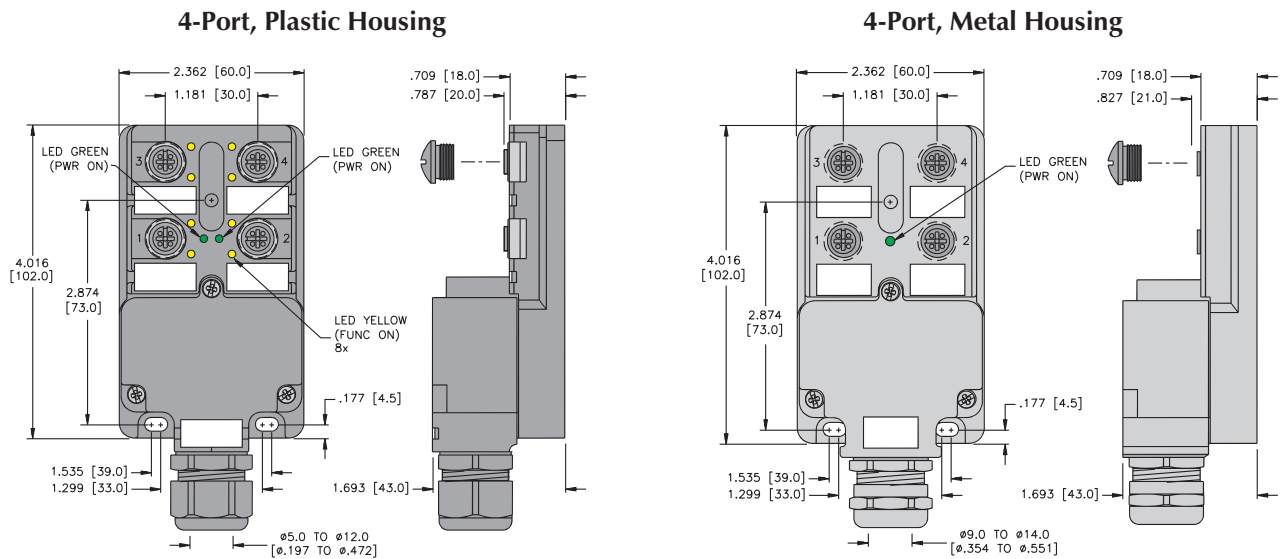
**LED version  
2 Signals Per Port**



## Specifications

- Housing:** PBT Black Plastic.
- Connectors:** **eurofast**<sup>®</sup>: PBT/black, spacings to VDE 0110 Group C.
- Contacts:** Gold plated brass.
- Thread Inserts:** Nickel plated brass.
- Cable Gland & OD:** PG 13.5, accepts cable diameter 5 to 12 mm
- Temperature:** -20°C to +90°C (-4°F to +194°F)
- Protection:** NEMA 1, 3, 4, 6P and IEC IP 68.
- Accessories:** (2) TC-CC closure caps and (labels) included.
- Termination Method:** Field wireable, Spring Clamp or Screw Terminal.
- Recommended Splitter:** YB2-FSM 4.5-2 FKM 4.5.

## Dimensions



Multibox, eurofast

## Pinout

