

multibox® eurofast® Terminal Chamber, 2 Signals Per Port

- 8-Port Plastic or Metal Housing
- 16 A Total
- Power Supply Isolation Option
- Plug in Terminal Cover - Spring Clamps or Screw Terminals

8-port, 10-30 VDC, 2 Signals Per Port, Isolated Power Supply Optional, Plastic

Termination Style

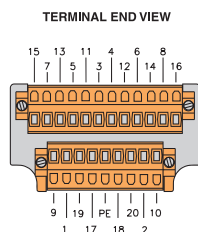
Application	Specifications	Pinout				Spring Clamp	Screw Terminals	
8-port J-box 2 signals per port, Jumper option for isolation between odd and even ports Terminal chamber connection - spring clamp or screw terminals	3 A/port, 10 A per power supply 16 A total 5-pin eurofast connector 2 (green) power LED 2 (yellow) signal per port LEDs cable diameter 5-12mm	Function	Terminal Pin	Function	Terminal Pin	8MB12-5P4-K-FK	8MB12-5P4-K-SK	
		Port 1/Signal 1	1	4/2	12			
			2/1	2	5/2			13
			3/1	3	6/2			14
			4/1	4	7/2			15
			5/1	5	8/2			16
			6/1	6	+V			17
			7/1	7	-V			18
			8/1	8	+V			19
		Port 1/Signal 2	9	-V	20			
			2/2	10	Ground			PE
	3/2	11						

8-port, 10-30 VDC, 2 Signals Per Port, Shielded Metal

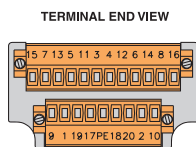
Termination Style

Application	Specifications	Pinout				Spring Clamp	Screw Terminals	
8-port J-box 2 signals per port Termination chamber connection - spring clamp or screw terminal	3 A/port 10 A/power supply 16 A total 5-pin eurofast connector 1 (green) power LED cable diameter 19-14mm	Function	Terminal Pin	Function	Terminal Pin	8MB12-5P1-MS-FK	8MB12-5P1-MS-SK	
		Port 1/Signal 1	1	4/2	12			
			2/1	2	5/2			13
			3/1	3	6/2			14
			4/1	4	7/2			15
			5/1	5	8/2			16
			6/1	6	+V			17
			7/1	7	-V			18
			8/1	8	+V			19
		Port 1/Signal 2	9	-V	20			
			2/2	10	Ground			PE
	3/2	11						

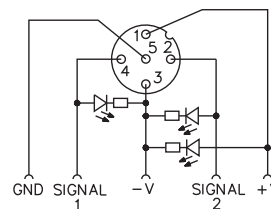
Spring Clamp



Screw Terminal



Functional Wiring Diagram
2 Signals Per Port

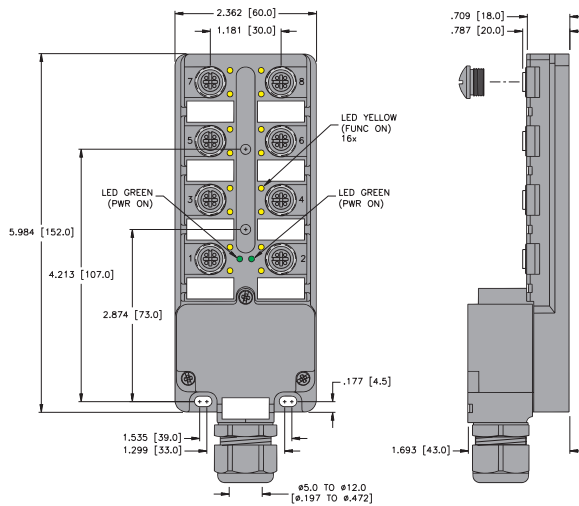


Specifications

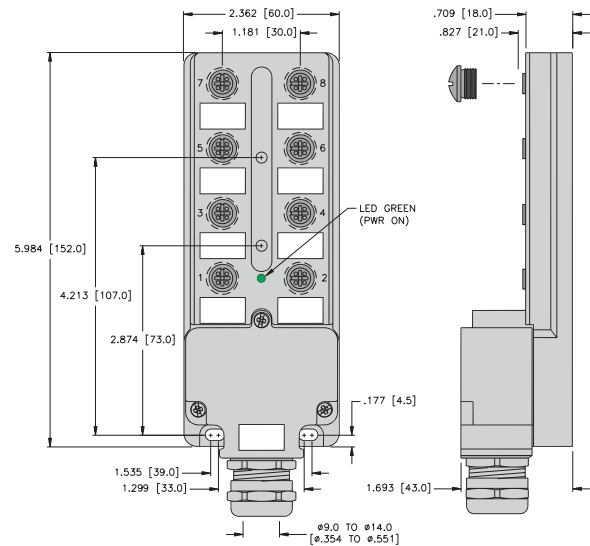
Housing:	Die Cast Zinc, Nickel plated.
Connectors:	eurofast®: PBT/black, spacings to VDE 0110 Group C.
Contacts:	Gold plated brass.
Thread Inserts:	Nickel plated brass.
Cable Gland & OD:	PG 13.5, accepts cable diameter 10-14 mm.
Temperature:	-20°C to +90°C (-4°F to +194°F).
Protection:	NEMA 1, 3, 4, 6P and IEC IP 68.
Accessories:	Includes (2) TC-CC closure caps and labels, stainless steel enclosure caps available, RSV-CC.
Termination	
Method:	Field wireable, spring clamps or screw terminals.
Recommended Splitter:	YB2-FSM 4.5-2 FKM 4.5.

Dimensions

8-Port, Plastic Housing



8-Port, Metal Housing



Pinout

