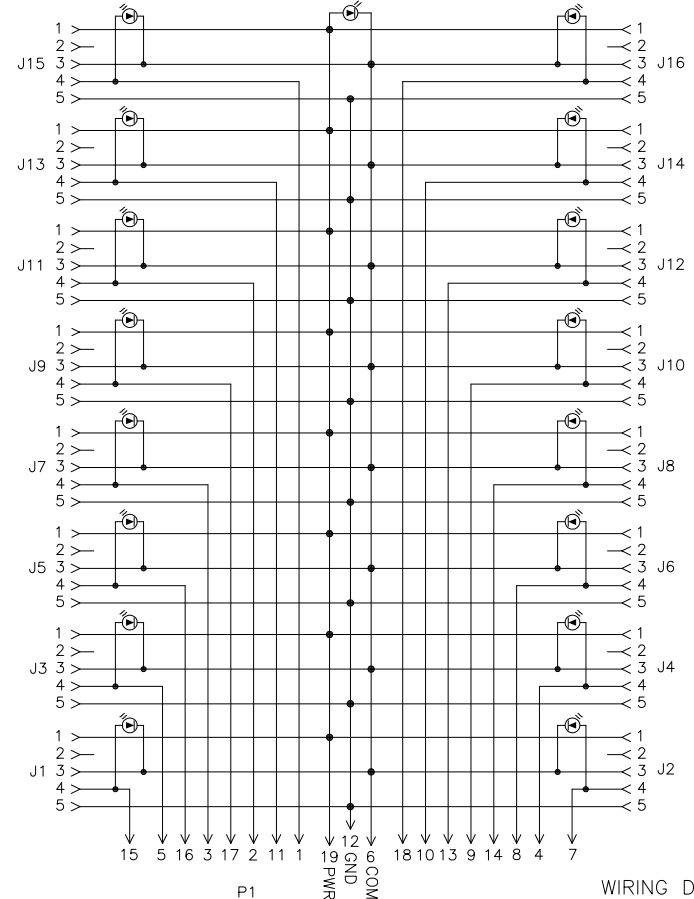
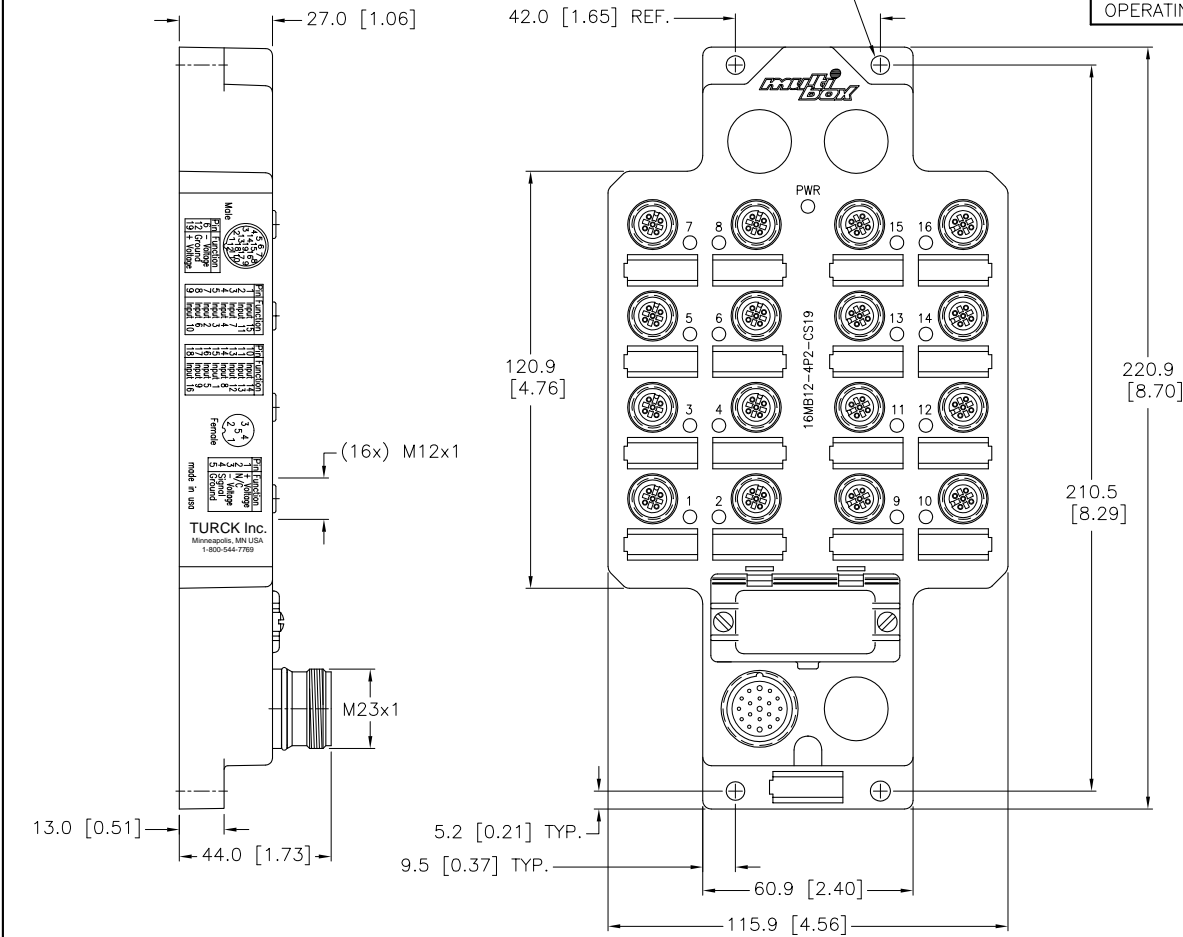


SOURCE DRAWING - FOR REFERENCE ONLY

SPECIFICATIONS	
HOUSING MATERIAL/COLOR	NYLON/BLACK
RECEPTACLE HOUSING MATERIAL/PLATING	BRASS/NICKEL
CONTACT CARRIERS/COLOR	NYLON/BK (J1-J16), PBT/WHITE (P1)
CONTACT MATERIAL/PLATING	BRASS/GOLD
OPERATING VOLTAGE	10-48 VDC
OPERATING CURRENT	8.0 AMPS (PINS 6,12,19), 2 AMPS (ALL OTHER PINS)
LED CURRENT	10mA MAX AT 48VDC SUPPLY VOLTAGE (PER LED)
PROTECTION CLASS to DIN 40050	IP 67 - ONLY WHEN ALL RECEPTACLES ARE COVERED WITH PLUGS OR CONNECTED
OPERATING TEMPERATURE	-30°C to +80°C (-22°F to +176°F)

MOUNTING SCREW
#8 [M5] (4)
NOT INCLUDED



P1 WIRING DIAGRAM

RELATED DOCUMENTS 1. 2. 3. 4.	3RD ANGLE PROJECTION 	THIS DRAWING IS PROPERTY OF TURCK INC. USE OF THIS DOCUMENT WITHOUT WRITTEN PERMISSION IS PROHIBITED.		3000 CAMPUS DRIVE MINNEAPOLIS, MN 55441 1-800-544-7769 (763) 553-7300 (763) 553-0708 fax turck.com		
		DRFT	RDS	DATE	01/20/04	DESCRIPTION 16MB12-4P2-CS19
		DSGN		SCALE	1=2.3	
		MATERIAL	SEE SPECIFICATIONS	UNIT OF MEASUREMENT		IDENTIFICATION NO.
FINISH	SEE SPECIFICATIONS	MILLIMETER [INCH]		U0927-84	D	
CONTACT TURCK FOR MORE INFORMATION		DO NOT SCALE THIS DRAWING		FILE: EURO-B\U0927-84	SHEET 1 OF 1	

D	UPDATE SPECIFICATIONS PER "REDLINE"	RDS	11/16/07	19500
REV	DESCRIPTION	BY	DATE	ECO NO.