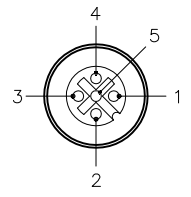
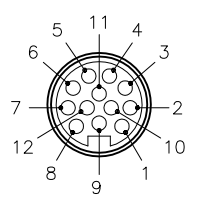
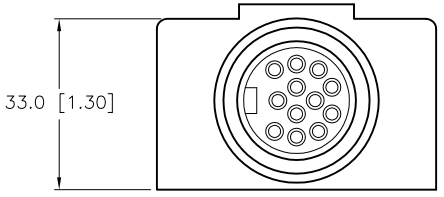
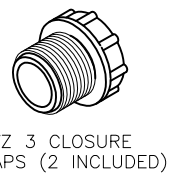
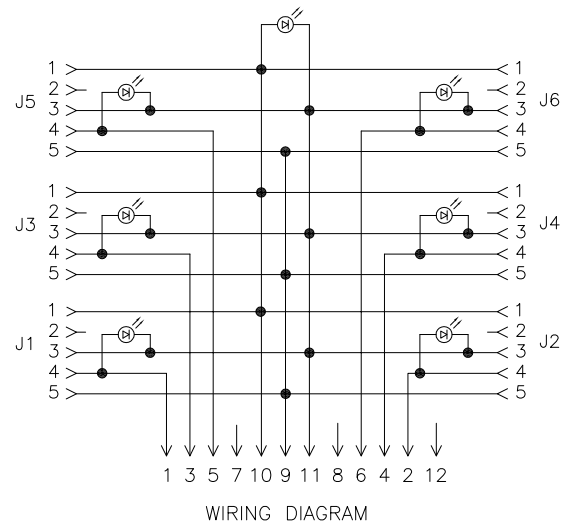
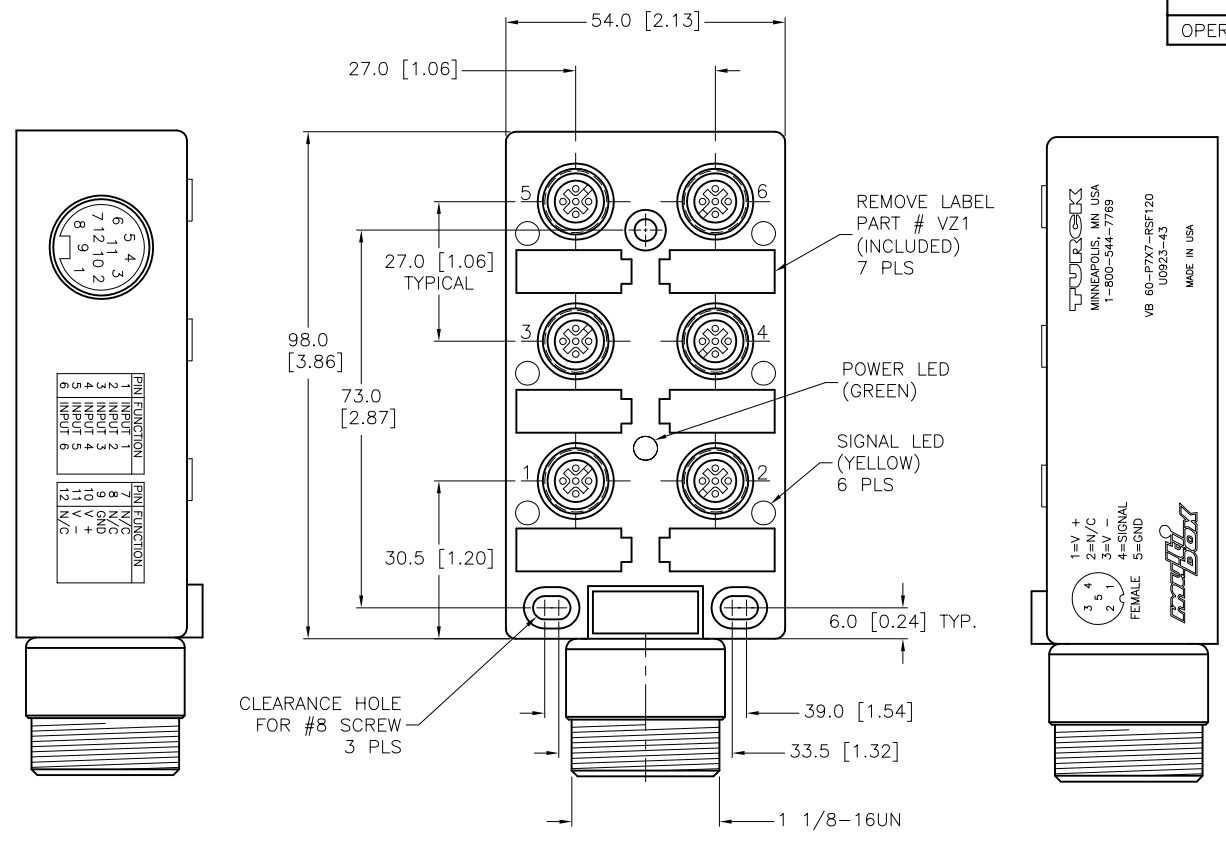


MALE END VIEW (P1) FEMALE END VIEW (J1-J6)



SPECIFICATIONS	
HOUSING/COLOR	NYLON/YELLOW
RECEPTACLE	NICKEL-PLATED BRASS
CONTACT CARRIERS/COLOR	NYLON/BLK (J1-J6), TPU/YEL (P1)
CONTACTS	GOLD-PLATED BRASS
SEALING RING	VITON O-RING
OPERATING VOLTAGE	10-48 VDC
OPERATING CURRENT	4.0 AMPS PER PORT, 5.0 AMPS PER SUPPLY
LED FUNCTION	FOR PNP SENSOR OUTPUT
SPACINGS	to VDE 0110 GROUP C (EUROFAST)
PROTECTION CLASS to DIN 40050	IP 67 - ONLY WHEN ALL RECEPTACLES ARE COVERED WITH PLUGS OR CONNECTED
OPERATING TEMPERATURE	-30°C to +80°C (-25°F to +176°F)



SOURCE DRAWING - FOR REFERENCE ONLY

RELATED DOCUMENTS		3RD ANGLE PROJECTION		THIS DOCUMENT IS PROPERTY OF TURCK INC. USE OF THIS DOCUMENT WITHOUT WRITTEN PERMISSION IS PROHIBITED.		TURCK INC High Technology Sensors and Automation Controls 3000 CAMPUS DRIVE MINNEAPOLIS, MN 55441 1-800-544-7769 (612) 553-7300 (612) 553-0708 fax www.turck.com	
1.			DRFT	PJ	DATE	11/23/04	DESCRIPTION VB 60-P7X7-RSF120
2.			DSGN	PLJ	SCALE	1=1.5	
3.		ALL DIMENSIONS DISPLAYED ON THIS DRAWING ARE FOR REFERENCE ONLY	UNIT OF MEASUREMENT		IDENTIFICATION NO.		REV
4.			MILLIMETER [INCH]		U0923-43		C
MATERIAL		SEE SPECIFICATIONS		CONTACT TURCK FOR MORE INFORMATION		DO NOT SCALE THIS DRAWING	
FINISH		SEE SPECIFICATIONS		FILE: U0923-43		SHEET 1 OF 1	

C	REMOVE TRADEMARKED MATERIAL REFERENCES	CBM	11/16/12	40471
REV	DESCRIPTION	BY	DATE	ECO NO.