

*multibox*° *eurofast*° Terminal Chamber, 2 Signals Per Port

- 4-Port, Plastic or Metal Housing
- Up to 12 A Total
- Power Supply Isolation Option
- Plug-in Terminal Cover with Spring Clamps or Screw Terminal

**4-port, 10-30 VDC, 2 Signals Per Port, Isolated Power Supply Optional, Plastic Housing**

**Termination Style**

Application	Specifications	Pinout		Spring Clamp	Screw Terminals
4-port J-box 2 signals per port Jumper option for isolation between odd and even ports Terminal chamber connection - spring clamp or screw terminals	3 A/port, 10 A per power supply 12 A total 5-pin <i>eurofast</i> connector 2(green) power LED 2(yellow) signal per port LEDs cable diameter 5-12mm	Function	Terminal Pin	4MB12-5P4-K-FK	4MB12-5P4-K-SK
		Port 1/Signal 1	1		
		2/1	2		
		3/1	3		
		4/1	4		
		Port 1/Signal 2	9		
		2/2	10		
		3/2	11		
		4/2	12		
		+V	17		
		-V	18		
		+V	19		
		-V	20		
Ground	PE				

**4-port, 10-30 VDC, 2 Signals Per Port, Shielded Metal Housing**

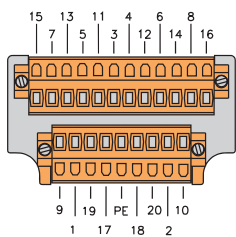
**Termination Style**

Application	Specifications	Pinout		Spring Clamp	Screw Terminals
4-port J-box 2 signals per port Termination chamber connection - spring clamp or screw terminals	3 A/port, 10 A total 5-pin <i>eurofast</i> connector 1(green) power LED cable diameter 9-14mm	Function	Terminal Pin	- - - -	4MB12-5P1-MS-SK
		Port 1/Signal 1	1		
		2/1	2		
		3/1	3		
		4/1	4		
		Port 1/Signal 2	9		
		2/2	10		
		3/2	11		
		4/2	12		
		+V	17		
		-V	18		
		+V	19		
		-V	20		
Ground	PE				

**Functional Wiring Diagrams**

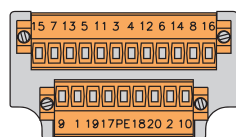
**Spring Clamp**

TERMINAL END VIEW

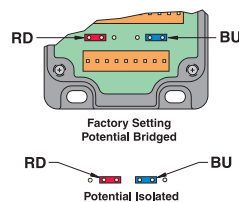


**Screw Terminal**

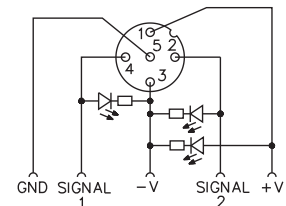
TERMINAL END VIEW



CONNECTION DIAGRAM



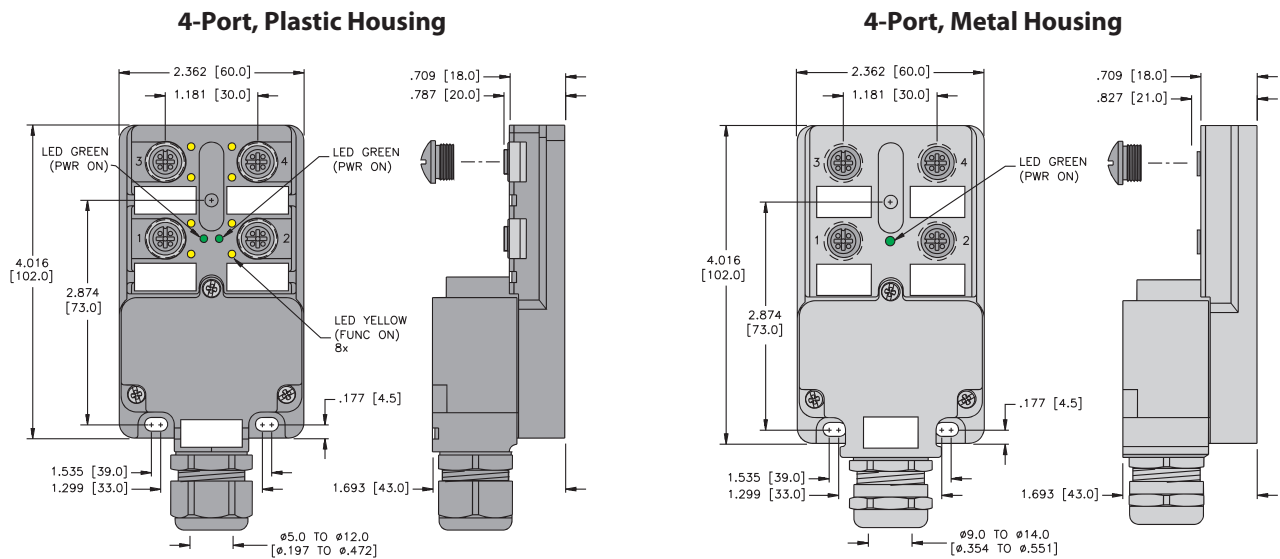
**LED version  
2 Signals Per Port**



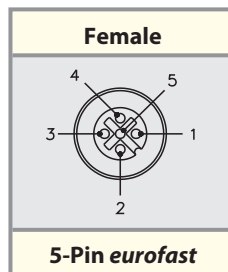
## Specifications

- Housing:** PBT Black Plastic
- Connectors:** **eurofast**: PBT/black
- Contacts:** Gold plated brass
- Thread Inserts:** Nickel plated brass
- Cable Gland & OD:** PG 13.5, accepts cable diameter 5 to 12 mm
- Temperature:** -20°C to +90°C (-4°F to +194°F)
- Protection:** IEC IP68
- Accessories:** (2) TC-CC closure caps and labels included
- Termination Method:** Field wireable, Spring Clamp or Screw Terminal. 16 AWG max.
- Recommended Splitter:** YB2-FSM 4.5-2 FKM 4.5

## Dimensions



## Pinout



Multibox, eurofast