

SPECIFICATIONS:					
NUMBER OF PHASES: 2			ROTOR INERTIA: 123 g-cm ² (0.67 oz-in ²) NOM		
STEPS PER REVOLUTION: 200			INSULATION CLASS: B		
STEP ANGLE: 1.8°			TEMP. RISE: 80 °C MAX.		
STEP TO STEP ACCURACY: ±0.09°			OPERATING TEMP. RANGE: -20 TO +50 °C		
POSITIONAL ACCURACY: ± 5 %			STORAGE TEMP. RANGE: -30 TO+70 °C		
AXIAL MOVEMENT:0.1mm MAX (100N AXIAL FORCE)			RELATIVE HUMIDITY RANGE: 15 TO 85 %		
BEARING SIZE: 19*10*5 mm			WEIGHT: 0.6 kg (1.32 lb)		
SHAFT MATERIAL: SUS303					

		7	8	1		1
SPECIFICATION		RESISTANCE PER PHASE (ohm ±10%)	INDUCTANCE PER PHASE (mH ±20%)	RATED CURRENT (amp)	HOLDING TORQUE (Nm MIN)	HOLDING TORQUE (oz-in Min)
CONNECTION						
BI-POLAR SERIES		1.49	4.4	2	0.74	104.8

NOTES, UNLESS OTHERWISE SPECIFIED:

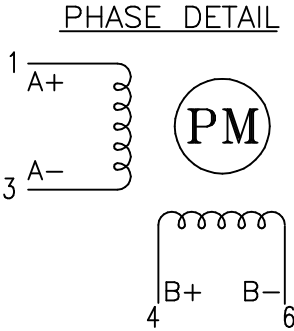
- 1 MEASURMENTS MADE AT RATED CURRENT IN EACH PHASE.
2 BETWEEN ANY TWO ADJACENT FULL STEP POSITIONS.
3 MAXIMUM ERROR IN 360°.
- 4 HIPOT 500 VAC, 60 Hz FOR ONE MINUTE.
5 CONNECTOR: JSTS6B-PH-K(LF)(SN)
6 INSULATION RESISTANCE: 100 MEGOHMS MIN AT 500 VDC.
7 AS MEASURED ACROSS EACH PHASE.
8 AS MEASURED ACROSS EACH PHASE USING AN A.C. INDUCTANCE BRIDGE AT 1 KHz.
9 AS MEASURED BY THE CHANGE IN RESISTANCE METHOD, WITH RATED CURRENT APPLIED TO 2 PHASES; WITH MOTOR AT REST.
10 ROTOR & STATOR LAMINATED CONSTRUCTION.
11 THIS MOTOR TO BE MANUFACTURED IN COMPLIANCE WITH EU DIRECTIVE "ROHS 2002/95/EC".
12 MOTOR LABEL TO INCLUDE "ROHS" COMPLIANT, AMP P/N, "MADE IN (COUNTRY OF ORIGIN)", AND DATE CODE.
13 HIGH TORQUE MOTOR DESIGN.

FULL STEP SWITCHING SEQUENCE
BI-POLAR, FACING MOUNTING END


STEP	A+	A-	B+	B-
0	+	-	+	-
1	-	+	+	-
2	-	+	-	+
3	+	-	-	+
4	+	-	+	-

CW

CCW




REVISIONS				
ECO NO.	REV	DESCRIPTION	DATE	APPROVED
7068	A	PRELIMINARY RELEASE	10/24/14	D.MACLEOD
—	—	—	—	—
—	—	—	—	—
—	—	—	—	—
—	—	—	—	—
—	—	—	—	—
—	—	—	—	—
—	—	—	—	—
—	—	—	—	—
—	—	—	—	—
—	—	—	—	—
—	—	—	—	—
—	—	—	—	—
—	—	—	—	—

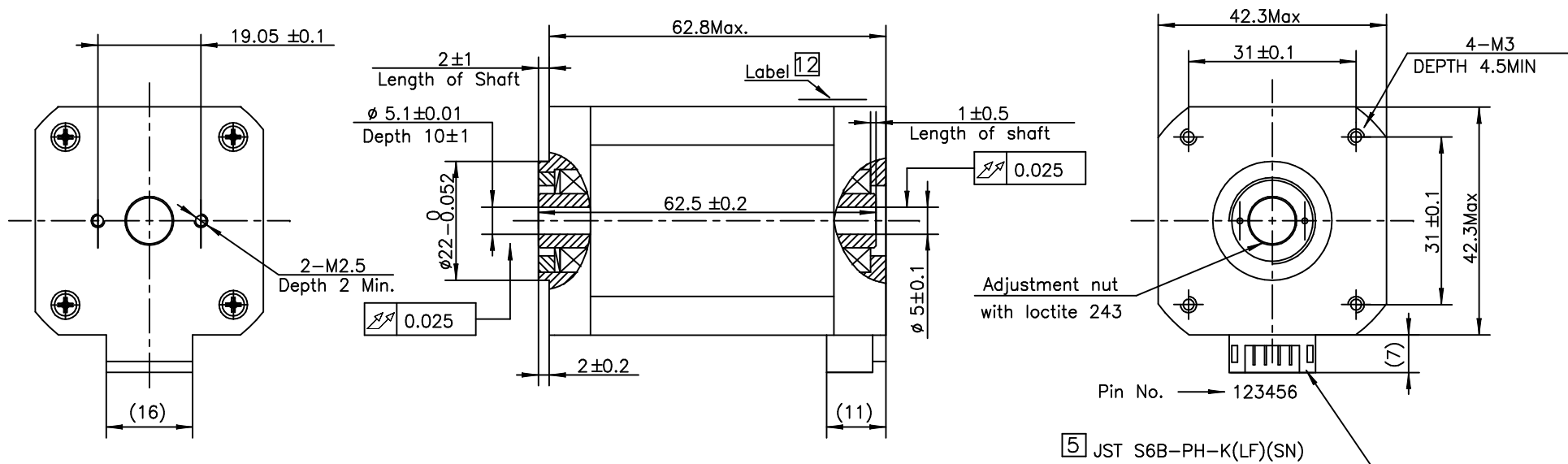


APPLIED
MOTION
PRODUCTS, INC.
www.applied-motion.com


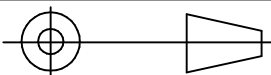
HH17-105
XX-XX-XX
RoHS 2A MADE IN CHINA

12

CONTRACT NO. —		 APPLIED MOTION PRODUCTS, INC.					
APPROVALS		DATE		STEP MOTOR OUTLINE			
DRAWN K.KESLER		10/20/14					
CHECKED R.JONEZ							
APPROVED —		—					
APPROVED —		—		B	COMPUTER DATA BASE DRAWING	DWG NO. HH17-105	REV A
APPROVED —		—		SCALE: NONE		SHEET 1 OF 2	



*ALL DIMENSIONS IN MM

TOLERANCES		FIRST ANGLE PROJECTION		 APPLIED MOTION PRODUCTS, INC.		
DECIMALS: MM X.XX = ±0.13 X.X = ±0.25 X = ±0.5 ANGLES: MACH. = ±0.5° CHAM. = ±5°						
		APPROVALS	DATE	STEP MOTOR OUTLINE		
		DRAWN K.KESLER	10/20/14			
		CHECKED R.JONEZ		B	DWG NO. HH17-105	REV A
COMPUTER DATA BASE DRAWING		APPROVED —	—			
				SCALE: NONE		SHEET 2 OF 2