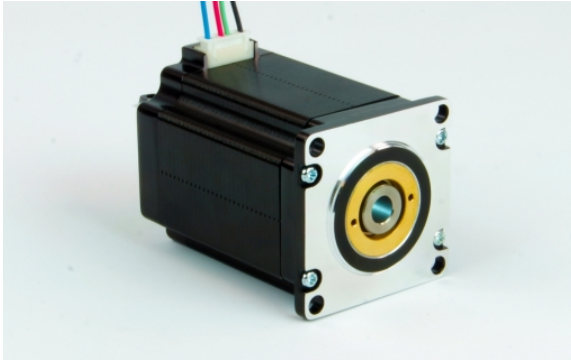


HH23-103

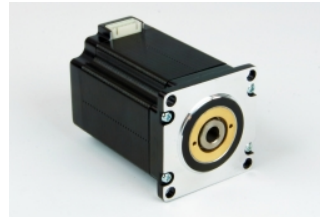
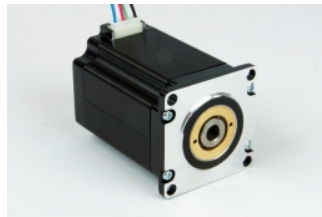
Hollow Shaft, NEMA 23 High Torque Step Motor

1pc. - 95.00
50pc. - 71.25



Product Features

- Hollow shaft for mounting custom shafts or lead screws
- High torque design
- NEMA 23 frame size
- 2-phase hybrid step motor
- 1.8 degree step angle
- Shipped with detachable lead/connector pigtail



Description

Product Description:

The HH23-103 two-phase stepper motor features a hollow shaft with an 8 mm bore. The hollow shaft allows for the attachment of lead screws and customized shafts without disassembling the motor.

This step motor is suitable for a wide range of motion control applications and is recommended for use with our popular [ST5 stepper drives](#).

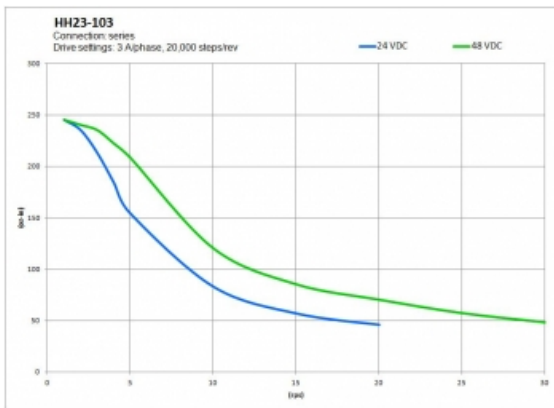
Specifications

Part Number:	HH23-103
Frame Size:	NEMA 23
Motor Type:	High torque
Motor Length:	3.11 inches
Number of Lead Wires:	4
Lead Wire Configuration:	flying leads, no connector
Lead Wire/Cable Length:	11.8 inches
Lead Wire Gauge:	22 AWG
Bipolar Holding Torque:	325.7 oz-in
Step Angle:	1.8 deg
Bipolar Series Current:	3 A/phase
Bipolar Series Resistance:	1.1 Ohms/phase
Bipolar Series Inductance:	4.5 mH/phase
Rotor Inertia:	6.51E-03 oz-in-sec ²
Weight:	2.43 lbs
Storage Temperature:	-30 to 70 °C
Operating Temperature:	-20 to 50 °C
Insulation Class:	B
End Play:	0.004 inch max w/ 22.5 lb load

Downloads

Datasheet:	http://s3.amazonaws.com/applied-motion-pdf/HH23-103.pdf
2D Drawing:	HH23-103_RevA.pdf 3004-321_RevA.pdf
3D Drawing:	HH23-103.igs
Speed-Torque Curves:	HH23-103 Torque Curve.pdf

Torque Curves



Pricing

HH23-103 Part No. w/ Single Shaft	
1pc.	\$95.00
25pc.	\$81.70
50pc.	\$71.25
100pc.	Request a Quote for 100+ piece pricing.