

BALDOR® • RELIANCE

Product Information Packet

1217W

2HP, 1800RPM, 1PH, 60HZ, 3634L, GRND

Copyright © All product information within this document is subject to Baldor Electric Company copyright © protection, unless otherwise noted.

Part Detail							
Revision:	S	Status:	PRD/A	Change #:		Proprietary:	No
Type:	AC	Prod. Type:	3634L	Elec. Spec:	G2WG0002	CD Diagram:	
Enclosure:	TENV	Mfg Plant:		Mech. Spec:	G12-119	Layout:	
Frame:		Mounting:	F1	Poles:	04	Created Date:	
Base:	RG	Rotation:	FOS	Insulation:	B	Eff. Date:	10-08-2012
Leads:	4#16 12" FROM IRON	Literature:	Y	Elec. Diagram:		Replaced By:	
Nameplate NP0234							
CAT.NO.	1217W						
HP	2				VOLTS	115/230	
PHASE	1				AMPS	20/10	
HZ	60				RPM	1800	
SER.NO							
SPEC.	G12-119B-0002						

Parts List		
Part Number	Description	Quantity
SA051566	SA G12-119B-0002	1.000 EA
RA046413	RA G12-119B-0002	1.000 EA
RE5019	115V MARS RELAY PT #16036	1.000 EA
EC1645A06SP	ELEC CAP, 645-774 MFD, 125V, 2.06D X 4.	1.000 EA
G2BA1000A01	BASE, MACH	1.000 EA
10XN4414A20	7/16-14 X 1-1/4 HEX HD CAP SCREW	2.000 EA
HW1001A44	WASHER,7/16 SPLT LK, ZN	2.000 EA
HW1000A45X	7/16 USS FLAT WASHER X	2.000 EA
HA6003A06	CLAMP, CAPACITOR PLATED	1.000 EA
52XN1032A06	SCREW, SER HX SLT HD, ZN X	1.000 EA
52XN0632A06	SCREW, SER HX SLT HD, ZN X	2.000 EA
HW1001A06	WASHER, #6 SPLIT LOCK, ZINC	2.000 EA
LD5000A01	LEAD ASSY, ML1400DF14 W/(2) #10 RING 7"	1.000 EA
52XF1032G04	S0-32 X 1/4, HX HD SR SL	2.000 EA
HA6766A03	BRACKET FOR 'GE' MANUAL STARTERS	1.000 EA
19XB2514A20	1/4-14X1-1/4 HX WS, TY B	2.000 EA
HW1001A25	LOCKWASHER 1/4, ZINC PLT .493 OD, .255 I	2.000 EA
HA2025A01	LEAD BUSHING	1.000 EA
RM1006A01	GROMMET,#2196:.75ID,.9375GROOVE DIA,.062	1.000 EA
52XN1032A04	10-32X1/4 HX HD SLTD SER X	3.000 EA
51XF1032A08	10/32X1/2 HXWSHR HD, SL, TYPE F ,SERATED	1.000 EA
XY1032A02	10-32 HEX NUT DIRECTIONAL SERRATION	2.000 EA
G2CB4500	BASE COVER PLATE, 36L - 12 GRINDER (PLA	1.000 EA
52XF1032A06	10-32X3/8 HX SLTD SER TYFESKAY	4.000 EA

Parts List (continued)		
Part Number	Description	Quantity
36CB4516	36 LIPPED CB LID	1.000 EA
37GS1001SP	GASKET, CONDUIT BOX LID, .06 THICK LEXID	1.000 EA
51XW0832A07	8-32 X .44, TAPTITE II, HEX WSHR SLTD SE	4.000 EA
G2EP1900A01	ENDPLATE, MACH	2.000 EA
HW5100A08	W3118-035 WVY WSHR (WB)	2.000 EA
HA3104A13	THRUBOLT 5/16-18 X 11.750 OHIO ROD	4.000 EA
HW1001A31	LOCKWASHER 5/16, ZINC PLT.591 OD, .319 I	4.000 EA
XY3118A12	5/16-18 HEX NUT DIRECTIONAL SERRATION	4.000 EA
G2FH1805A01	L.H. GRINDER GUARD, MACH	1.000 EA
10XN3816A20	3/8-16X1 1/4 HEX HD CAP	4.000 EA
HW1001A38	LOCKWASHER 3/8, ZINC PLT .688 OD, .382 I	4.000 EA
85XU0407S04	4X1/4 U DRIVE PIN STAINLESS	2.000 EA
G2FH1804A01	R.H. GRINDER GUARD, MACH	1.000 EA
10XN3816A20	3/8-16X1 1/4 HEX HD CAP	4.000 EA
HW1001A38	LOCKWASHER 3/8, ZINC PLT .688 OD, .382 I	4.000 EA
G2AP1002A01SP	TOOL REST, MACH (G) MACHINED 6 ON	1.000 EA
HA6049A01SP	SUPPORT, TOOL REST, MACH	1.000 EA
10XN4420A24	7/16-20X1 1/2 HEX HD SCR	3.000 EA
HW1000A44	WASHER, 7/16 FLAT, ZN	3.000 EA
HW1001A44	WASHER,7/16 SPLT LK, ZN	3.000 EA
G2AP1002A01SP	TOOL REST, MACH (G) MACHINED 6 ON	1.000 EA
HA6049A01SP	SUPPORT, TOOL REST, MACH	1.000 EA
10XN4420A24	7/16-20X1 1/2 HEX HD SCR	3.000 EA
HW1000A44	WASHER, 7/16 FLAT, ZN	3.000 EA

Parts List (continued)		
Part Number	Description	Quantity
HW1001A44	WASHER,7/16 SPLT LK, ZN	3.000 EA
G2FH1807A01	L.H. GRINDER GUARD COVER, MACH	1.000 EA
10XN3816A20	3/8-16X1 1/4 HEX HD CAP	4.000 EA
HW1001A38	LOCKWASHER 3/8, ZINC PLT .688 OD, .382 I	4.000 EA
G2FH1806A01	R.H. GRINDER GUARD COVER, MACH	1.000 EA
10XN3816A20	3/8-16X1 1/4 HEX HD CAP	4.000 EA
HW1001A38	LOCKWASHER 3/8, ZINC PLT .688 OD, .382 I	4.000 EA
HA6051SP	FLANGE, WHEEL, CAST	4.000 EA
HW3022J06	1/4X.625 ROLLED SPR PIN	2.000 EA
XZ2007A62SP	1 1/4-7 NUT LH HEX (NC)	1.000 EA
XZ2007A12SP	1 1/4-7 NUT RH HX(NC)(F/S)	1.000 EA
G2AP1001ZP	SPARK BREAKER FOR 12" GRINDER GUARD	1.000 EA
10XN3816A16	3/8-16 X 1 HEX HD CAP SCREW	2.000 EA
HW1000A38	WASHER, 3/8" FLAT, SAE Z/P	2.000 EA
HW1001A38	LOCKWASHER 3/8, ZINC PLT .688 OD, .382 I	2.000 EA
G2AP1001ZP	SPARK BREAKER FOR 12" GRINDER GUARD	1.000 EA
10XN3816A16	3/8-16 X 1 HEX HD CAP SCREW	2.000 EA
HW1000A38	WASHER, 3/8" FLAT, SAE Z/P	2.000 EA
HW1001A38	LOCKWASHER 3/8, ZINC PLT .688 OD, .382 I	2.000 EA
G4GS5000	G14-23 GASKET X	1.000 EA
MJ1000A75	GREASE, POLYREX EM EXXON	0.050 LB
HA1000A45	DR11501.020 BRG GRD,B-N	1.000 EA
GA9	EYESHIELD ASSY	1.000 EA
MG1000G01	400-0116 BATTLESHIP GRAY LACQUER (55G)	0.017 GA

Parts List (continued)		
Part Number	Description	Quantity
LB1389A03	CONSOLIDATED GRINDER LABEL - 9",10",12"	1.000 EA
LB1112	LABEL GRDR STARTER BOX GR	1.000 EA
LB5024	TAG, CAUTION PRINT SHOP	1.000 EA
MN909	EYESHIELD MTG INSTR. FOR GA9, GA10 & GA1	1.000 EA
WD1000A15	3-520132-2 AMP FLAG (4M/RL NON-CANC/NON-	3.000 EA
CN1900A02	MAN. STARTER 'GE' NO. CR1062S3AAP2000, 3	1.000 EA
CN2006125B	HEATER, 'GE' NO. CR123C125B (FOR 'GE' ST	3.000 EA
LB1119	WARNING LABEL	1.000 EA
LB1125C01	STD (STOCK) CARTON LABEL BALDOR WITH FLA	1.000 EA
NP0234	NP- 8" GR, BLANK UL W/O CSA	1.000 EA
G4PA1000	PACKAGING GROUP	1.000 EA
MN903	INSTR MANUAL FOR GRINDERS 9/03	1.000 EA

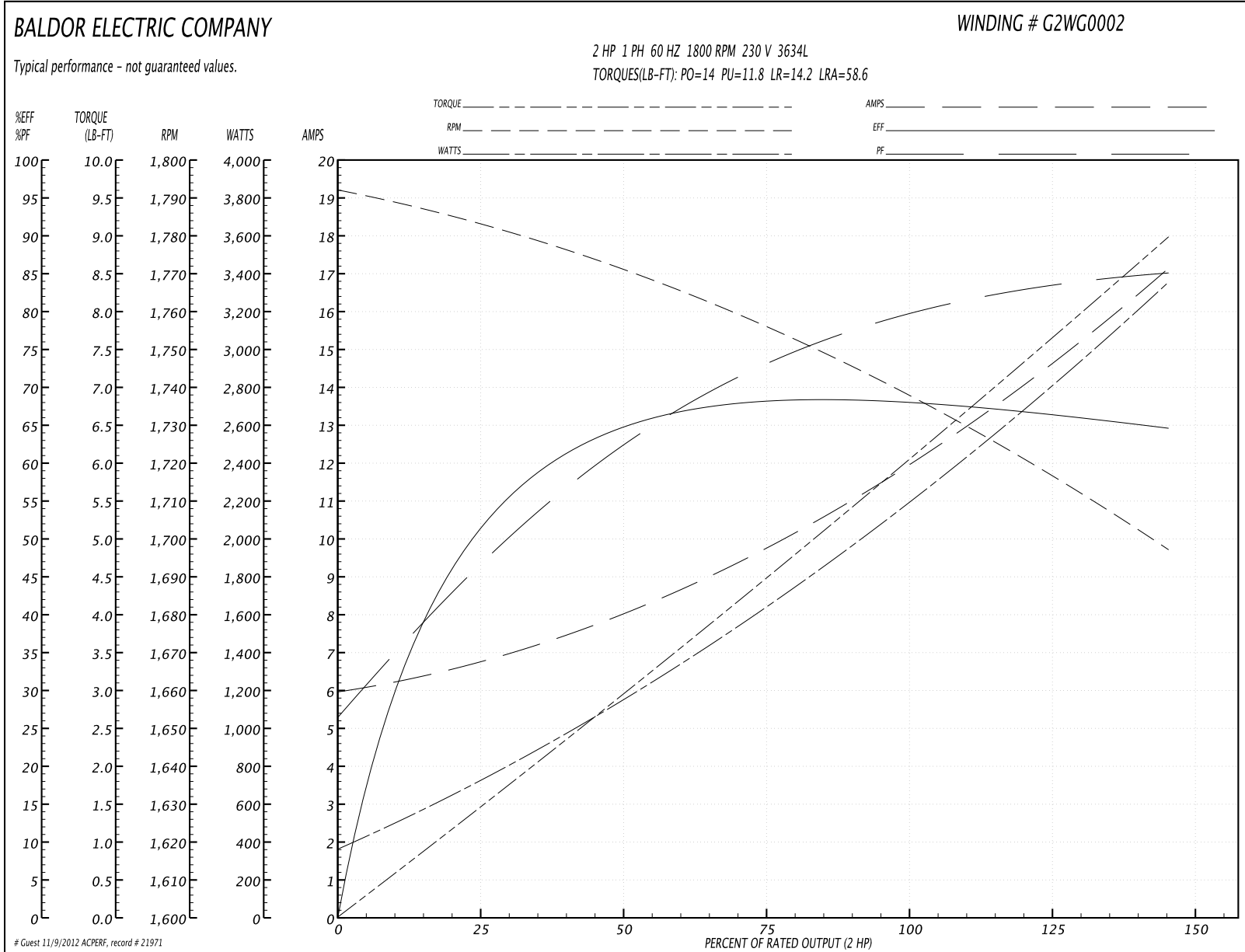
Accessories		
Part Number	Description	Multiplier
GA20	PEDESTAL INDUSTRIAL, CAST IRON 8"-14"	A8
GA9	PAIR LIGHTED EYESHIELDS	A8
GA9-1	SINGLE LIGHTED EYESHIELD	A8
GA9S	PAIR EYESHIELDS W/ ON-OFF SWITCH	A8
GA11	PAIR EYESHIELDS	A8
B125	12" 30 GRIT GRINDING WHEEL	A8
B126	12" 46 GRIT GRINDING WHEEL	A8
BQ1-015-CC	1PH Bake, NEMA 1,110-125 VAC, 50/60Hz	E7
BQ1-015-CP	1PH Brake, Panel 110-125 VAC, 50/60 Hz	E7
BQ2-015-CC	1PH Brake,NEMA 1 208-230 VAC,50/60Hz	E7
BQ2-015-CP	1PH Brake, Panel 208-230 VAC, 50/60 Hz	E7
DC12	DUST CONTROL UNIT	A8

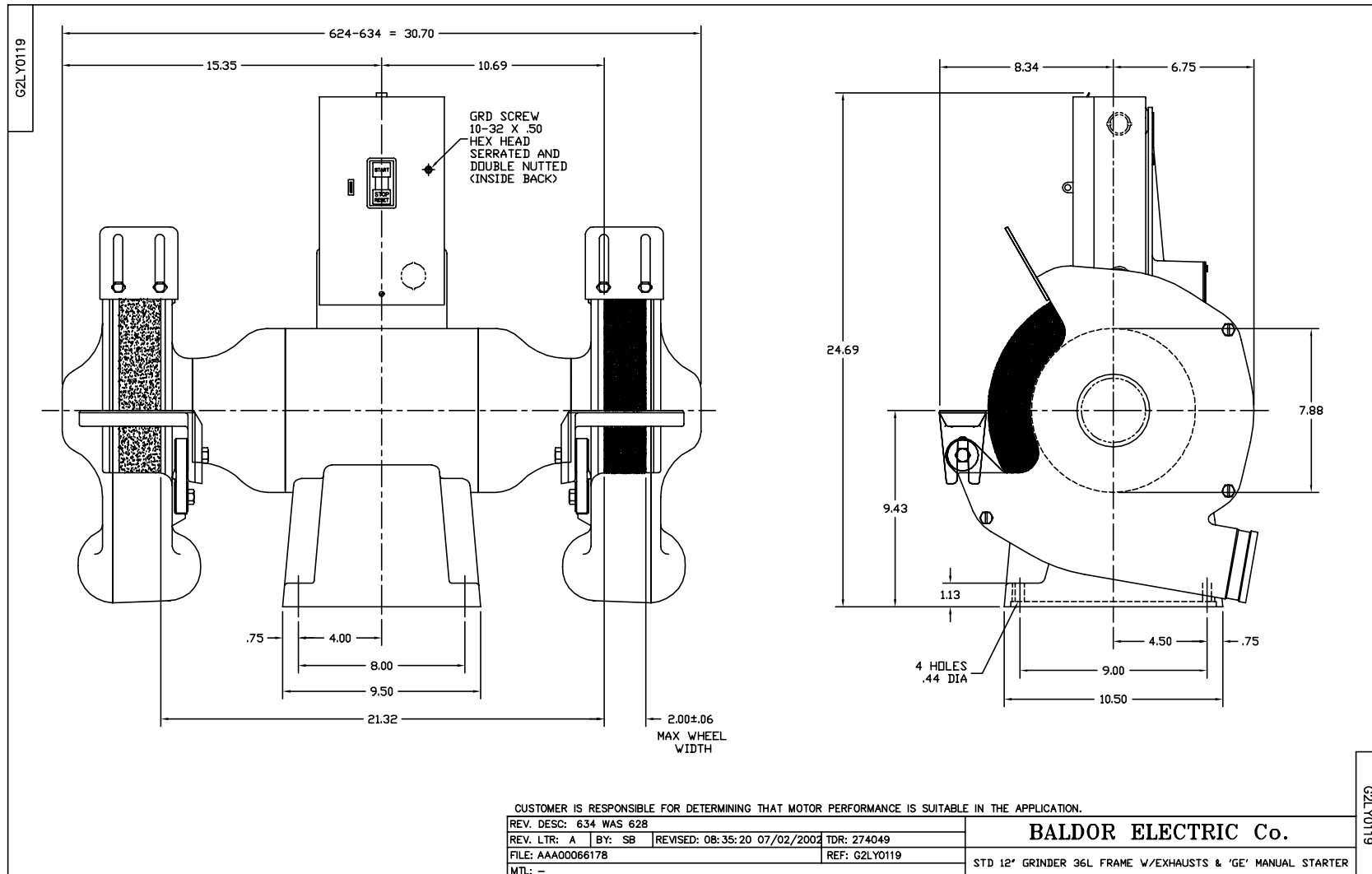
Performance Data at 230V, 60Hz, 2.0HP (Typical performance - Not guaranteed values)

General Characteristics			
Full Load Torque:	6.0 LB-FT	Start Configuration:	DOL
No-Load Current:	6.04 Amps	Break-Down Torque:	14.0 LB-FT
Line-line Res. @ 25°C.:	0.997 Ohms A Ph / 0.665 Ohms B Ph	Pull-Up Torque:	11.8 LB-FT
Temp. Rise @ Rated Load:		Locked-Rotor Torque:	14.2 LB-FT
Temp. Rise @ S.F. Load:		Starting Current:	58.6 Amps

Load Characteristics							
% of Rated Load	25	50	75	100	125	150	S.F.
Power Factor:	49.0	64.0	73.0	79.0	82.0	86.0	0.0
Efficiency:	50.6	64.5	68.3	68.7	66.4	64.6	0.0
Speed:	1782.0	1770.0	1756.0	1739.0	1720.0	1696.0	0.0
Line Amperes:	6.7	7.99	9.76	11.9	14.6	17.0	0.0

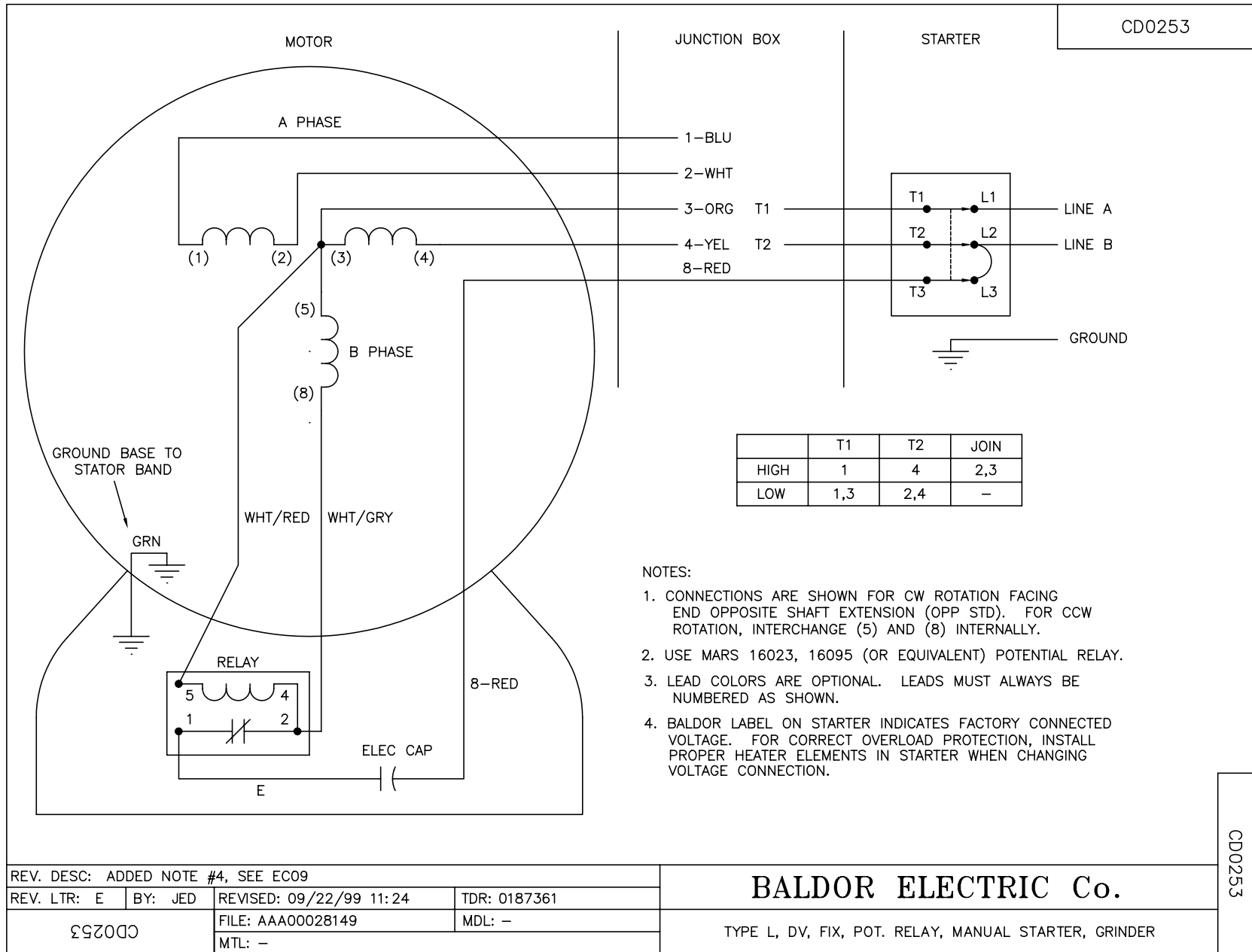
Performance Graph at 230V, 60Hz, 2.0HP Typical performance - Not guaranteed values





G2LY0119

G2LY0119



REV. DESC: ADDED NOTE #4, SEE EC09			
REV. LTR: E	BY: JED	REVISED: 09/22/99 11:24	TDR: 0187361
ΩΣ2053		FILE: AAA00028149	MDL: -
		MTL: -	

BALDOR ELECTRIC Co.

TYPE L, DV, FIX, POT. RELAY, MANUAL STARTER, GRINDER

CD0253