

# **BALDOR**® • *RELIANCE*

## **Product Information Packet**

# **AEM2238-4**

**10HP, 1760RPM, 3PH, 60HZ, 256U, 0932M, TEFC, F1**

Copyright © All product information within this document is subject to Baldor Electric Company copyright © protection, unless otherwise noted.

Part Detail									
Revision:	U	Status:	PRD/A	Change #:		Proprietary:	No		
Type:	AC	Prod. Type:	0932M	Elec. Spec:	09WGX154	CD Diagram:			
Enclosure:	TEFC	Mfg Plant:		Mech. Spec:	09T36	Layout:			
Frame:	256U	Mounting:	F1	Poles:	04	Created Date:			
Base:	RG	Rotation:	R	Insulation:	F	Eff. Date:	03-12-2012		
Leads:	3#12	Literature:		Elec. Diagram:		Replaced By:			
Nameplate NP1404E									
CAT.NO.	AEM2238-4								
SPEC.	09T36X154M								
VOLTS	460								
AMP	12								
RPM	1760	HP	10						
FRAME	256U	HZ	60	PH	3				
SER.F.	1.00	CODE	G	DES	B	CL	F		
NEMA-NOM-EFF	90.2	PF	87						
G.MIN.EFF	88.5	CC							
RATING	65C AMB-CONT								
LUBRICATION	POLYREX EM								
DE	6309	ODE	6208						
ENCL	TEFC	SER. #							
	MEETS GM-7EHQ								

Parts List		
Part Number	Description	Quantity
SA013207	SA 09T36X154M	1.000 EA
RA009406	RA 09T36X154M	1.000 EA
HW1002A63	WASHER, 5/8 HI-COLLAR SPRLCKWASHER	1.000 EA
09CB1002A12P	KOBX W/1.25 NPT LEAD HOLE & 2.38 MTG HOL	1.000 EA
09GS1010	GASKET, DWG, LEADWIRE SEPERATOR	1.000 EA
10XN2520K12	1/4-20 X.75 GRD 5	4.000 EA
HW1001A25	LOCKWASHER 1/4, ZINC PLT .493 OD, .255 I	4.000 EA
WD1000B16	KPA-4C BURNDY TERMINAL	1.000 EA
10XN2520K06	1/4-20 X 3/8" HX HD SCREWGRADE 5, ZINC P	1.000 EA
HW1001A25	LOCKWASHER 1/4, ZINC PLT .493 OD, .255 I	1.000 EA
09EP1100A14P	ENDPLATE, MACH W/EPOXY PRIMER	1.000 EA
HA3400A33	STUD- 3/8-16 X 4.82 HEX WELKER	4.000 EA
HW1001A38	LOCKWASHER 3/8, ZINC PLT .688 OD, .382 I	4.000 EA
HA1005A12SP	SLINGER, OD 2.50, ID 1.433, 208 BRG	1.000 EA
HW5100A08	W3118-035 WVY WSHR (WB)	1.000 EA
10XN2520K28	1/4-20 X 1.75" HX HD SCRWGRADE 5, ZINC P	2.000 EA
HW1001A25	LOCKWASHER 1/4, ZINC PLT .493 OD, .255 I	2.000 EA
09EP1101A11P	MACH'D EPOXY PRIMED EP	1.000 EA
10XN3816K24	3/8-16 X 1.50 HEX HD CAP SCREW, GRADE 5	4.000 EA
HW1001A38	LOCKWASHER 3/8, ZINC PLT .688 OD, .382 I	4.000 EA
HW4600B44SP	V-RING SLINGER 1.500 X 2.290 X 0.280	1.000 EA
10XN2520K36	1/4-20 X 2.25" HX HD SCRWGRADE 5, ZINC P	4.000 EA
HW1001A25	LOCKWASHER 1/4, ZINC PLT .493 OD, .255 I	4.000 EA
09FH4000P	FAN COVER, STAMPED W/EPOXY PRIMER	1.000 EA

Parts List (continued)		
Part Number	Description	Quantity
XY3816A12	3/8-16 FINISHED NUT	4.000 EA
HW1001A38	LOCKWASHER 3/8, ZINC PLT .688 OD, .382 I	4.000 EA
12CB1500A01P	CONDUIT BOX LID, MACH W/EPOXY PRIMER	1.000 EA
12GS1002	GASKET, CONDUIT BOX LID, NEOP	1.000 EA
10XN3118K24	5/16-18 X 1.50" HEX HD, GRADE 5	2.000 EA
HW1001A31	LOCKWASHER 5/16, ZINC PLT.591 OD, .319 I	2.000 EA
HW2501F24	KEY, 5/16 SQ X 2.750	1.000 EA
MJ5001A01	46-665 RED SEALER	0.031 QT
MJ5002A01	SILICON RUBBER SEALANT, 732CL 10.3 OZ TU	0.050 EA
MJ5001A14	DYNAPRO SEAL, CP MOTORS VC#2508050 (603	0.001 EA
MJ5004A04	ADHESIVE LOCTITE 609	0.005 EA
LB1115	LABEL,LIFTING DEVICE	1.000 EA
LB5040	INSTRUCTION TAG, AC & DC	1.000 EA
WD1000B07	TERMINAL, BURNDY YAV10-T3	3.000 EA
HW4500A20	1/8NPT SL PIPE PLUG	2.000 EA
HA4001A01SP	DRAIN PLUG, PLASTIC (MICRO PLAS)	1.000 EA
MJ1000A75	GREASE, POLYREX EM EXXON	0.080 LB
HW4500A20	1/8NPT SL PIPE PLUG	3.000 EA
MG1025G02	PAINT, 782-02 WILKOFASST LIGHT GREY EPOXY	0.050 GA
85XU0407S04	4X1/4 U DRIVE PIN STAINLESS	2.000 EA
09FN3001D01SP	EXTERNAL FAN, PLASTIC	1.000 EA
HW2500A25	WOODRUFF KEY USA #1008 #BLOW CARBON STEE	1.000 EA
51XB1214A20	12-14X1.25 HXWSSLD SERTYB	1.000 EA
LB1119	WARNING LABEL	1.000 EA

Parts List (continued)		
Part Number	Description	Quantity
LB1125C02	SUPER-E (STOCK CTN LABEL SUPER-E WITH FL	4.000 EA
LC0006	CONNECTION LABEL	1.000 EA
NP1404E	SS UL CSA CC "AUTOMOTIVE"	1.000 EA
09PA1000	PACKAGING GROUP COMBINED PRINT	1.000 EA

Accessories		
Part Number	Description	Multiplier
09-1309	C FACE KIT (kit may require RB3001A01)	A8

**Performance Data at 460V, 60Hz, 10.0HP (Typical performance - Not guaranteed values)**

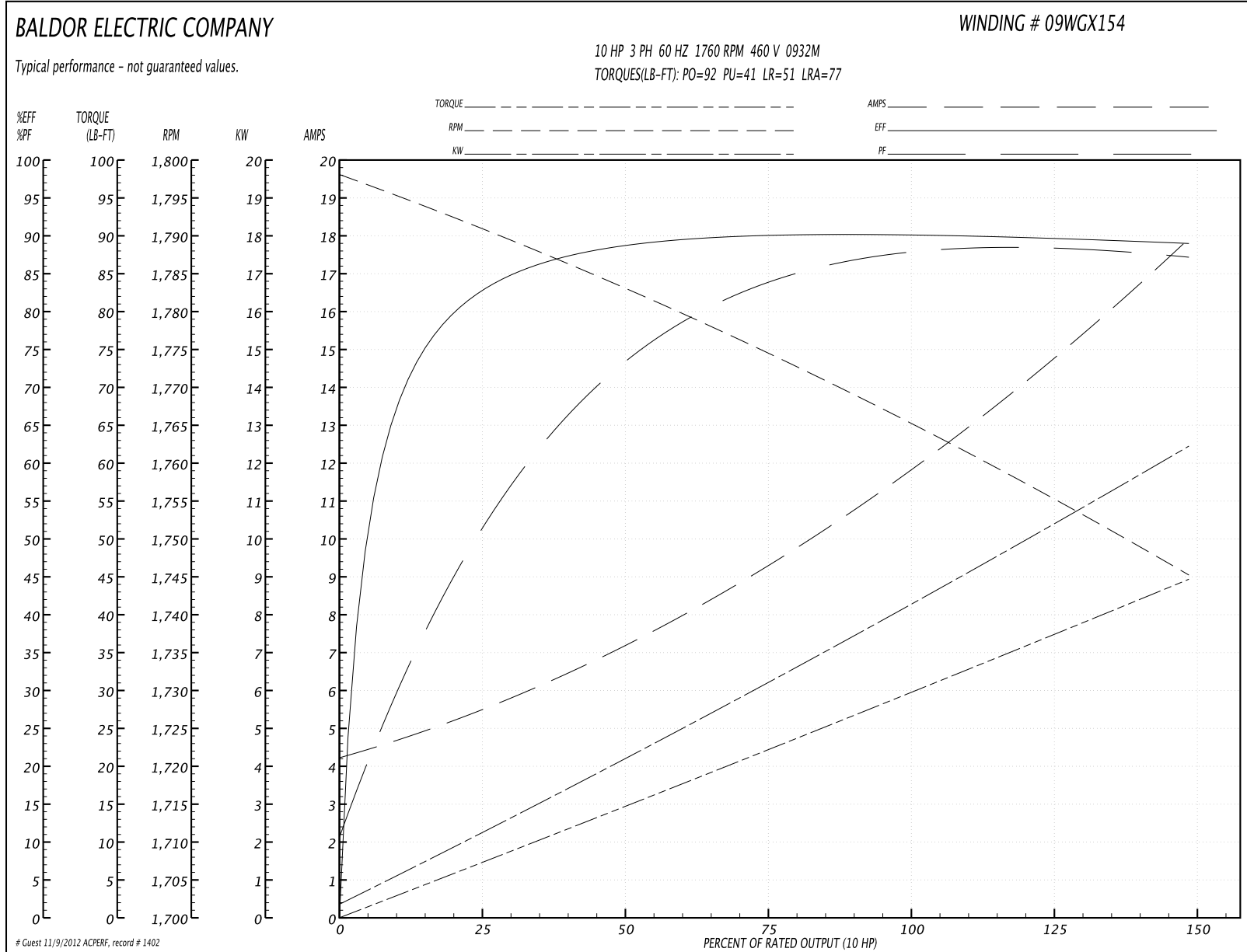
**General Characteristics**

<b>Full Load Torque:</b>	29.8 LB-FT	<b>Start Configuration:</b>	DOL
<b>No-Load Current:</b>	4.4 Amps	<b>Break-Down Torque:</b>	92.0 LB-FT
<b>Line-line Res. @ 25°C.:</b>	1.05 Ohms A Ph / 0.0 Ohms B Ph	<b>Pull-Up Torque:</b>	41.0 LB-FT
<b>Temp. Rise @ Rated Load:</b>	50 C	<b>Locked-Rotor Torque:</b>	51.0 LB-FT
<b>Temp. Rise @ S.F. Load:</b>		<b>Starting Current:</b>	77.0 Amps

**Load Characteristics**

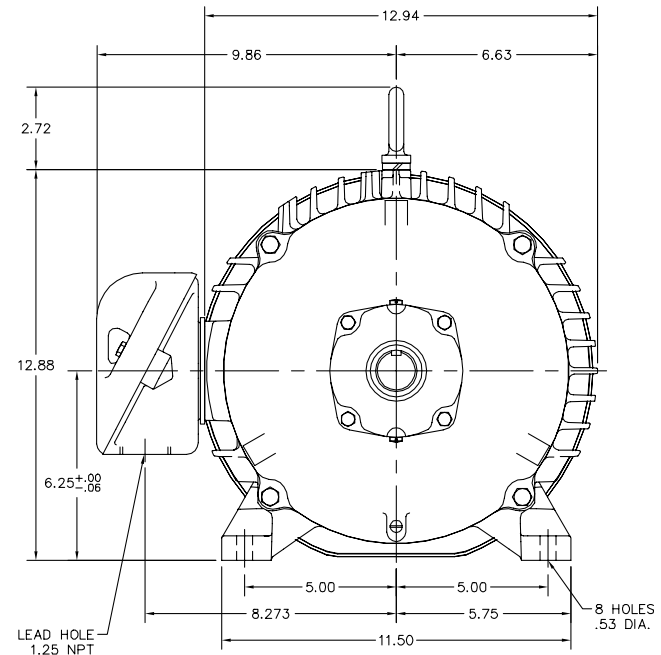
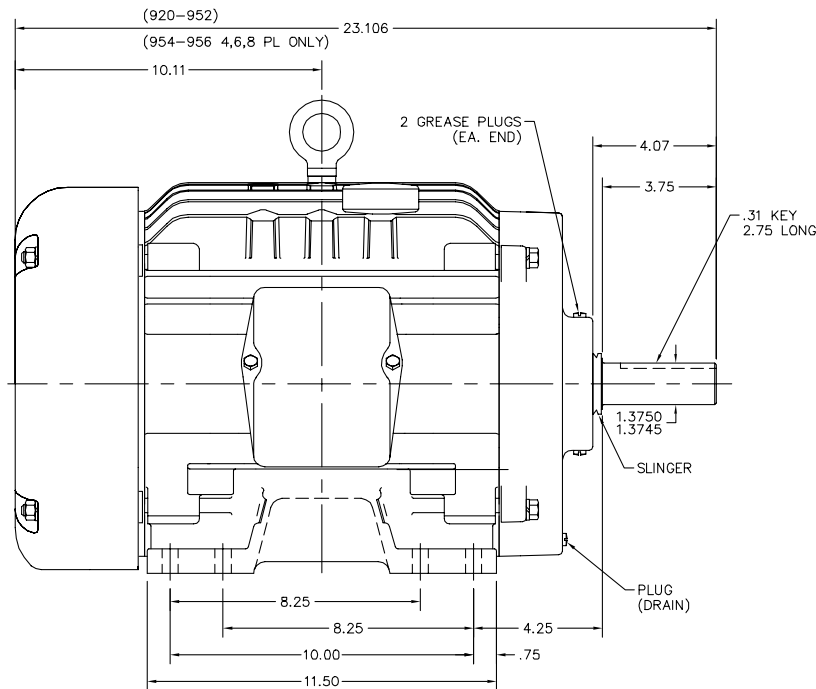
% of Rated Load	25	50	75	100	125	150	S.F.
<b>Power Factor:</b>	54.0	75.0	83.0	87.0	88.0	89.0	0.0
<b>Efficiency:</b>	82.8	88.6	90.0	90.2	89.8	88.9	0.0
<b>Speed:</b>	1791.0	1783.0	1774.0	1765.0	1756.0	1745.0	0.0
<b>Line Amperes:</b>	5.3	7.1	9.4	12.0	14.8	17.8	0.0

Performance Graph at 460V, 60Hz, 10.0HP Typical performance - Not guaranteed values





09LYT036



CUSTOMER IS RESPONSIBLE FOR DETERMINING THAT MOTOR PERFORMANCE IS SUITABLE IN THE APPLICATION. GM\_SPECS

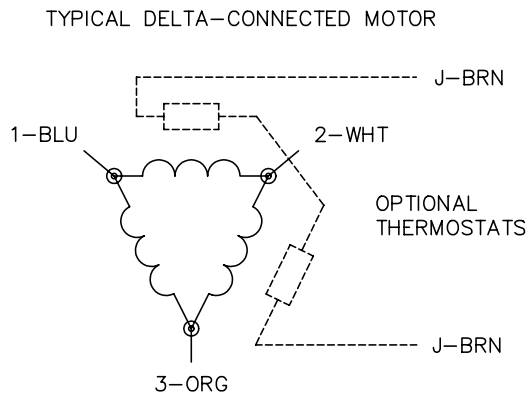
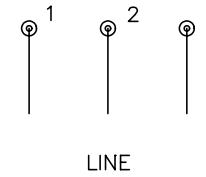
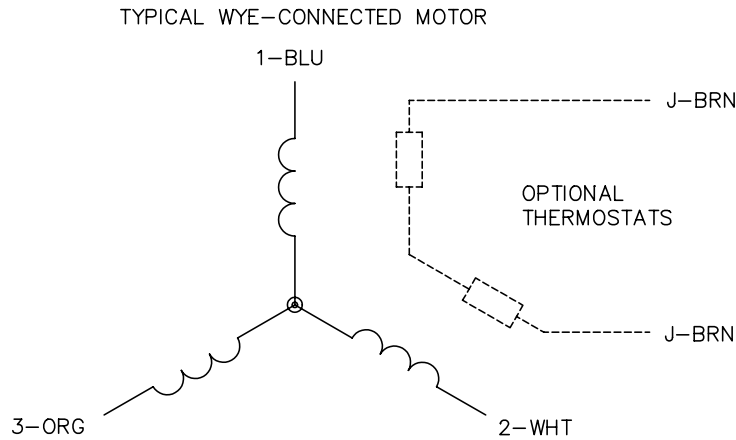
REV. DESC: CORRECT GRAPHICS		
REV. LTR: J	VERSION: 02	TDR: 000000418585
FILE: \AAA\00007\874	REVISED: 10:02:20 01/08/2007	BY: ENBREWO
MTL: -		

**BALDOR ELECTRIC Co.**

HORZ TEFC 254-6U (GM SPECS)

09LYT036

CD0006



NOTES:

1. THREE LEAD MOTOR MAY BE EITHER WYE CONNECTED OR DELTA CONNECTED.
2. INTERCHANGE ANY TWO LINE LEADS TO REVERSE ROTATION.
3. OPTIONAL THERMOSTATS ARE PROVIDED WHEN SPECIFIED.
4. ACTUAL NUMBER OF INTERNAL PARALLEL CIRCUITS MAY VARY.
5. LEAD COLORS ARE OPTIONAL. LEADS MUST BE NUMBERED AS SHOWN.

REV. DESC: REVISE TO SHOW OPTIONAL COLORS			
REV. LTR: D	BY: JLP	REVISED: 01/21/99 4:02	TDR: 0171435
9000D		FILE: AAA00005141	MDL: -
		MTL: -	

**BALDOR ELECTRIC Co.**

3PH, SV, 3 LEADS, WYE OR DELTA CONNECTED

CD0006