

# **BALDOR**® • **RELIANCE**

## **Product Information Packet**

# **ANFL3507M**

**.75HP, 1725RPM, 1PH, 60HZ, 48YZ, 3428LC, TEFC**

Copyright © All product information within this document is subject to Baldor Electric Company copyright © protection, unless otherwise noted.

Part Detail							
Revision:	AA	Status:	PRD/A	Change #:		Proprietary:	No
Type:	AC	Prod. Type:	3428LC	Elec. Spec:	34WGX030	CD Diagram:	
Enclosure:	TEFC	Mfg Plant:		Mech. Spec:	34H318	Layout:	
Frame:	48YZ	Mounting:	F1	Poles:	04	Created Date:	
Base:	N	Rotation:	R	Insulation:	B	Eff. Date:	04-11-2011
Leads:	6#18,1#16 #4TH	Literature:		Elec. Diagram:		Replaced By:	

**Nameplate NP1280L**

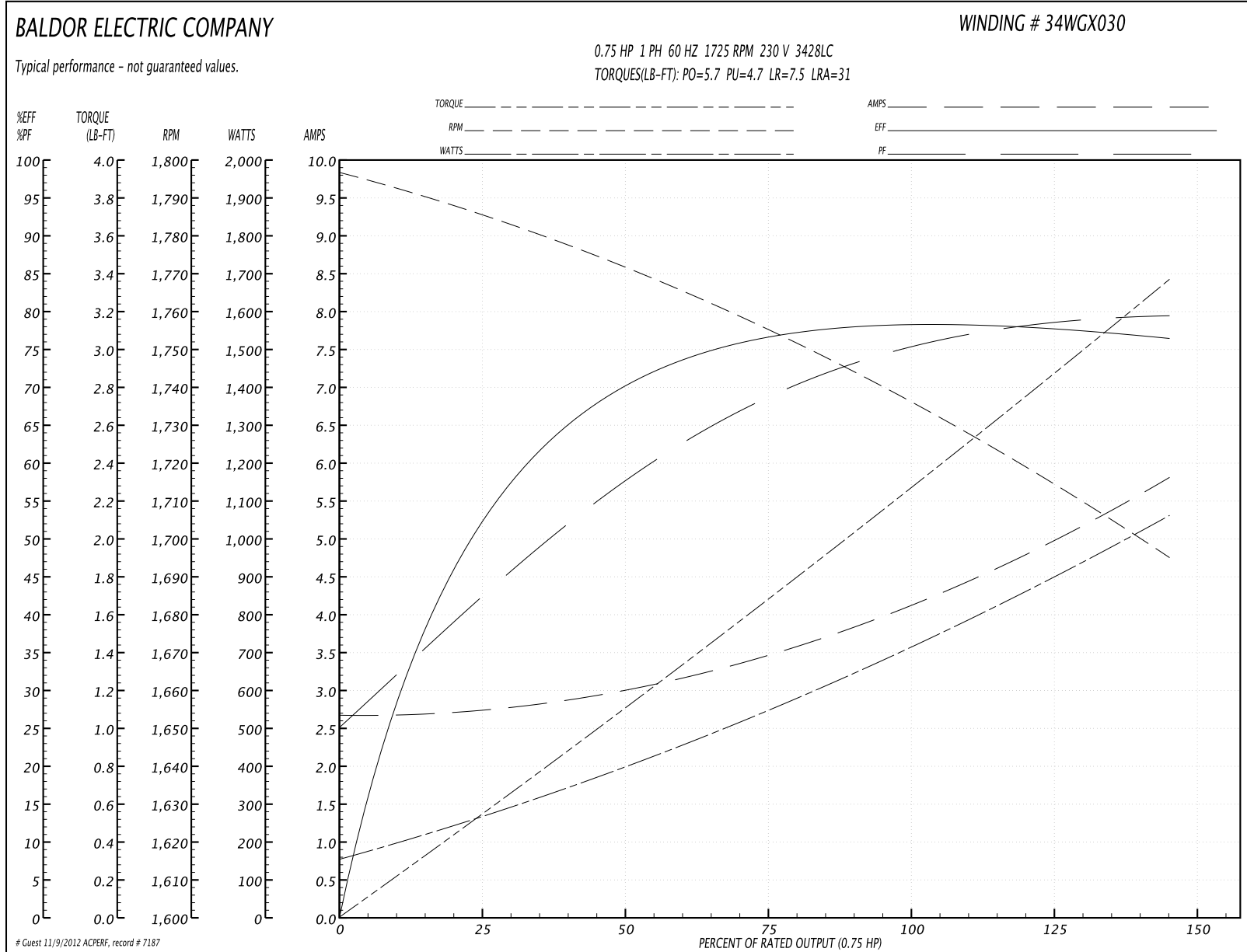
CAT.NO.	ANFL3507M						
SPEC.	34H318X030G1						
HP	.75						
VOLTS	115/230						
AMP	8.2/4.1						
RPM	1725						
FRAME	48YZ	HZ	60	PH	1		
SER.F.	1.25	CODE	J	DES	N	CL	B
NEMA-NOM-EFF	74	PF	80				
RATING	40C AMB-CONT						
CC	USABLE AT 208V			5.4			
DE	6203	ODE	6203				
ENCL	TEFC	SN					
	SFA 9.8/4.9						

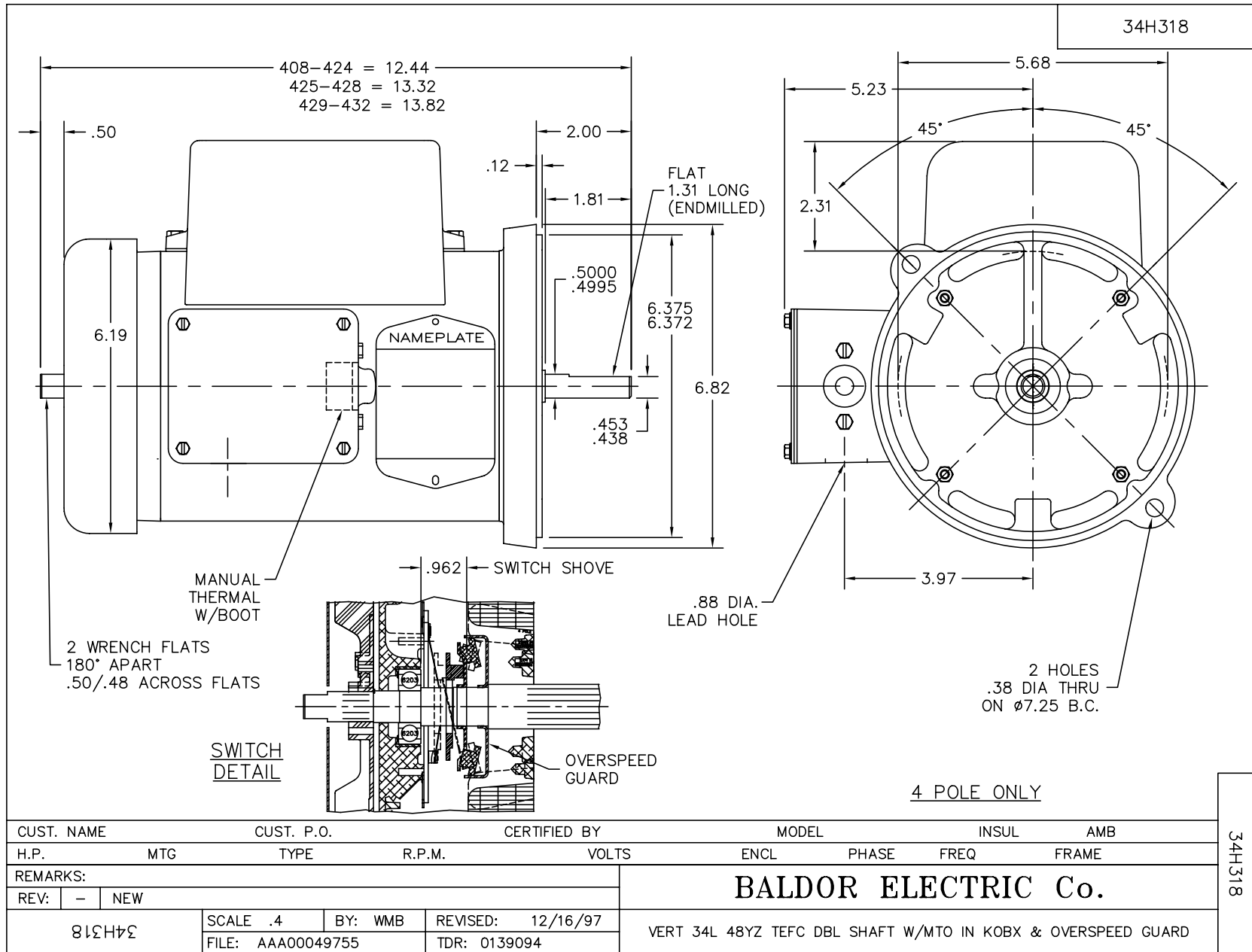
Parts List		
Part Number	Description	Quantity
SA010437	SA 34H318X030G1	1.000 EA
RA006806	RA 34H318X030G1	1.000 EA
OC3020F12SP	CYL OIL CAP 20MFD/370V	1.000 EA
TPMRJ30RB	THERMAL 1PH 0.75 MAN 120C	1.000 EA
EC4270A01	ELEC CAP 125V 1.48D X 2.75H	1.000 EA
34CB3001A39P	CONDUIT BOX, MACH/PAINT	1.000 EA
NS2512A01	INSULATOR, CONDUIT BOX X	1.000 EA
34GS1013SP	GASKET, CONDUIT BOX LEXIDE	1.000 EA
51XB1016A07	10-16 X 7/16 HXWSSLD SERTYB	2.000 EA
11XW1032G06	10-32 X .38, TAPTITE II, HEX WSHR SLTD U	1.000 EA
RM1014A01SP	BUTYL RUB.THRM COV. (MENA)	1.000 EA
HA6001A01	THERMAL RETAINER (PLATED)	1.000 EA
51XB1214A08	12-14 X 1/2HX WS SL SR TYBX	2.000 EA
51XW0832A07	8-32 X .44, TAPTITE II, HEX WSHR SLTD SE	2.000 EA
34EP3102A01SP	FR ENDPLATE, MACH	1.000 EA
34CB3801	CAPACITOR BOX, DIE CAST	1.000 EA
34GS3002	GASKET, CAPACITOR BOX	1.000 EA
51XB1214A08	12-14 X 1/2HX WS SL SR TYBX	2.000 EA
HW5100A03SP	WAVY WASHER (W1543-017)	1.000 EA
34EP3500A01	ENDPLATE, MACH	1.000 EA
XY1032A02	10-32 HEX NUT DIRECTIONAL SERRATION	4.000 EA
34FN3002A01SP	EXTERNAL FAN, PLASTIC, .637/.639 HUB W/	1.000 EA
34FH4002A03SP	IEC FH NO GREASER W/.88 DIA SHAFT HOLE	1.000 EA
51XW1032A06	10-32 X .38, TAPTITE II, HEX WSHR SLTD S	3.000 EA

Parts List (continued)		
Part Number	Description	Quantity
36CB4516	36 LIPPED CB LID	1.000 EA
37GS1001SP	GASKET, CONDUIT BOX LID, .06 THICK LEXID	1.000 EA
51XW0832A07	8-32 X .44, TAPTITE II, HEX WSHR SLTD SE	4.000 EA
34GS5003A01	FOAM SLEEVE, ID = 2 1/16" X 4 3/8"	3.000 EA
MG1025C02	PAINT, 787.105 LITE TAN EPOXY (USE W/MG1	0.014 GA
10XF0440S02	04-40 X 1/8 TYPE F HEX HD STAINLESS STIC	2.000 EA
WD4006A01	WIRE JOINT, RB-4 OR RB-44	1.000 EA
SP5056A18	MODEL 34 TYPE LC STATIONARY SWITCH WITH	1.000 EA
HA3100A38	THRUBOLT 10-32 X 9.375	4.000 EA
LB5040	INSTRUCTION TAG, AC & DC	1.000 EA
LB1119	WARNING LABEL	1.000 EA
LB1087	LABEL,MANUAL RESET (ROLL LABEL)	1.000 EA
LB1125C01	STD (STOCK) CARTON LABEL BALDOR WITH FLA	1.000 EA
LC0269	1PH,DV,REV,THERMAL,7 LD,L.AMP THRU HTR H	1.000 EA
NP1280L	ALUM FARM DUTY UL CSA CC THERMAL	1.000 EA
34PA1005	PACKING GROUP, BALDOR	1.000 EA
PK3083T	STYROFOAM PACKING CRADLE W/TAPE	1.000 EA

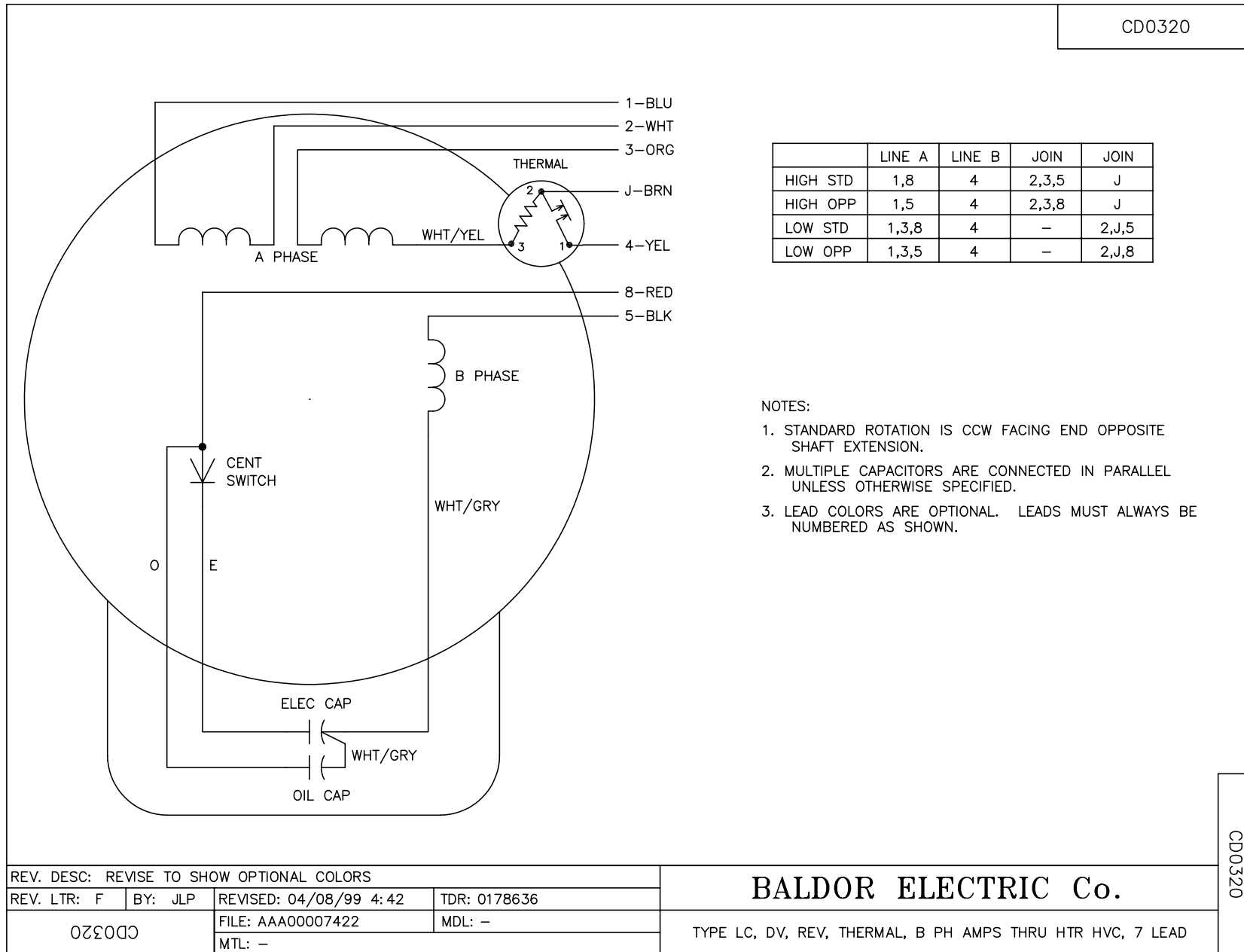
Performance Data at 230V, 60Hz, 0.75HP (Typical performance - Not guaranteed values)							
<b>General Characteristics</b>							
Full Load Torque:	2.25 LB-FT			Start Configuration:	DOL		
No-Load Current:	2.7 Amps			Break-Down Torque:	5.7 LB-FT		
Line-line Res. @ 25°C.:	3.11 Ohms A Ph / 1.73 Ohms B Ph			Pull-Up Torque:	4.7 LB-FT		
Temp. Rise @ Rated Load:	62 C			Locked-Rotor Torque:	7.5 LB-FT		
Temp. Rise @ S.F. Load:	81 C			Starting Current:	31.0 Amps		
<b>Load Characteristics</b>							
% of Rated Load	25	50	75	100	125	150	S.F.
Power Factor:	43.0	61.0	72.0	80.0	85.0	87.0	0.0
Efficiency:	53.6	67.7	73.0	73.9	93.2	71.4	0.0
Speed:	1784.0	1770.0	1755.0	1739.0	1717.0	1694.0	0.0
Line Amperes:	2.7	3.0	3.5	4.1	4.9	5.8	4.9

Performance Graph at 230V, 60Hz, 0.75HP Typical performance - Not guaranteed values





CD0320



REV. DESC: REVISE TO SHOW OPTIONAL COLORS			
REV. LTR: F	BY: JLP	REVISED: 04/08/99 4:42	TDR: 0178636
0320		FILE: AAA00007422	MDL: -
		MTL: -	

**BALDOR ELECTRIC Co.**

TYPE LC, DV, REV, THERMAL, B PH AMPS THRU HTR HVC, 7 LEAD

CD0320