

# **BALDOR**® • *RELIANCE*

## **Product Information Packet**

# **AOM25904T**

**5HP,870RPM,3PH,60HZ,254T,3936M,TEAO,F1**

Copyright © All product information within this document is subject to Baldor Electric Company copyright © protection, unless otherwise noted.

Part Detail							
Revision:	Y	Status:	PRD/A	Change #:		Proprietary:	No
Type:	AC	Prod. Type:	3936M	Elec. Spec:	39WGZ042	CD Diagram:	
Enclosure:	TEAO	Mfg Plant:		Mech. Spec:	39J95	Layout:	
Frame:	254T	Mounting:	F1	Poles:	08	Created Date:	
Base:	RG	Rotation:	R	Insulation:	F	Eff. Date:	03-03-2008
Leads:	9#12 36" LG	Literature:	Y	Elec. Diagram:		Replaced By:	

Nameplate NP1256L							
CAT.NO.	AOM25904T						
SPEC.	39J95Z42						
HP	5 AIR OVER						
VOLTS	230/460						
AMP	17.8/8.9						
RPM	870						
FRAME	254T	HZ	60	PH	3		
SER.F.	1.15	CODE	G	DES	B	CLASS	F
NEMA-NOM-EFF	82.5	PF	64				
RATING	40C AMB-CONT						
CC		USABLE AT 208V	19.6				
DE	6309	ODE	6208				
ENCL	TEAO	SN					
	900 FPM AT 250 CFM						

Parts List		
Part Number	Description	Quantity
SA000239	SA 39J95Z42	1.000 EA
RA000239	RA 39J95Z42	1.000 EA
HA6016	ADAPTER, CAST CONDUIT BOX	1.000 EA
09GS1000SP	GASKET-CONDUIT BOX, 1/16 THICK LEXIDE	1.000 EA
09CB3002SP	CB W/1.38 LEAD HOLE FOR 37, 39, 307 & 30	1.000 EA
09GS1000SP	GASKET-CONDUIT BOX, 1/16 THICK LEXIDE	1.000 EA
19XW2520A16	SCREW,1/4-20X1 TAPTITE-II OR ROLOC 91	2.000 EA
HW1001A25	LOCKWASHER 1/4, ZINC PLT .493 OD, .255 I	2.000 EA
WD1000B17	KPA-8C BURNDY TERMINAL	1.000 EA
11XW1032G06	10-32 X .38, TAPTITE II, HEX WSHR SLTD U	1.000 EA
39EP1100B01	STD FRONT EP, TENV	1.000 EA
HA4051A00	PLASTIC CAP FOR GREASE FITTING	1.000 EA
HW5100A08	W3118-035 WVY WSHR (WB)	1.000 EA
39EP1101A02	STD PU EP-ENCL-TEFC	1.000 EA
HA4051A00	PLASTIC CAP FOR GREASE FITTING	1.000 EA
10XN2520K28	1/4-20 X 1.75" HX HD SCRWGRADE 5, ZINC P	4.000 EA
HW1001A25	LOCKWASHER 1/4, ZINC PLT .493 OD, .255 I	4.000 EA
HA3154A01	STUD, 3/8-16 X 14.375	4.000 EA
XY3816A12	3/8-16 FINISHED NUT	8.000 EA
09CB3501SP	CONDUIT BOX LID FOR 09CB3001 & 09CB3002	1.000 EA
09GS1013SP	09 GS FOR 09CB3501 LID - LEXIDE	1.000 EA
51XW2520A12	.25-20 X .75, TAPTITE II, HEX WSHR SLTD	2.000 EA
HW2501G25	KEY, 3/8 SQ X 2.875	1.000 EA
LB1115	LABEL,LIFTING DEVICE	1.000 EA

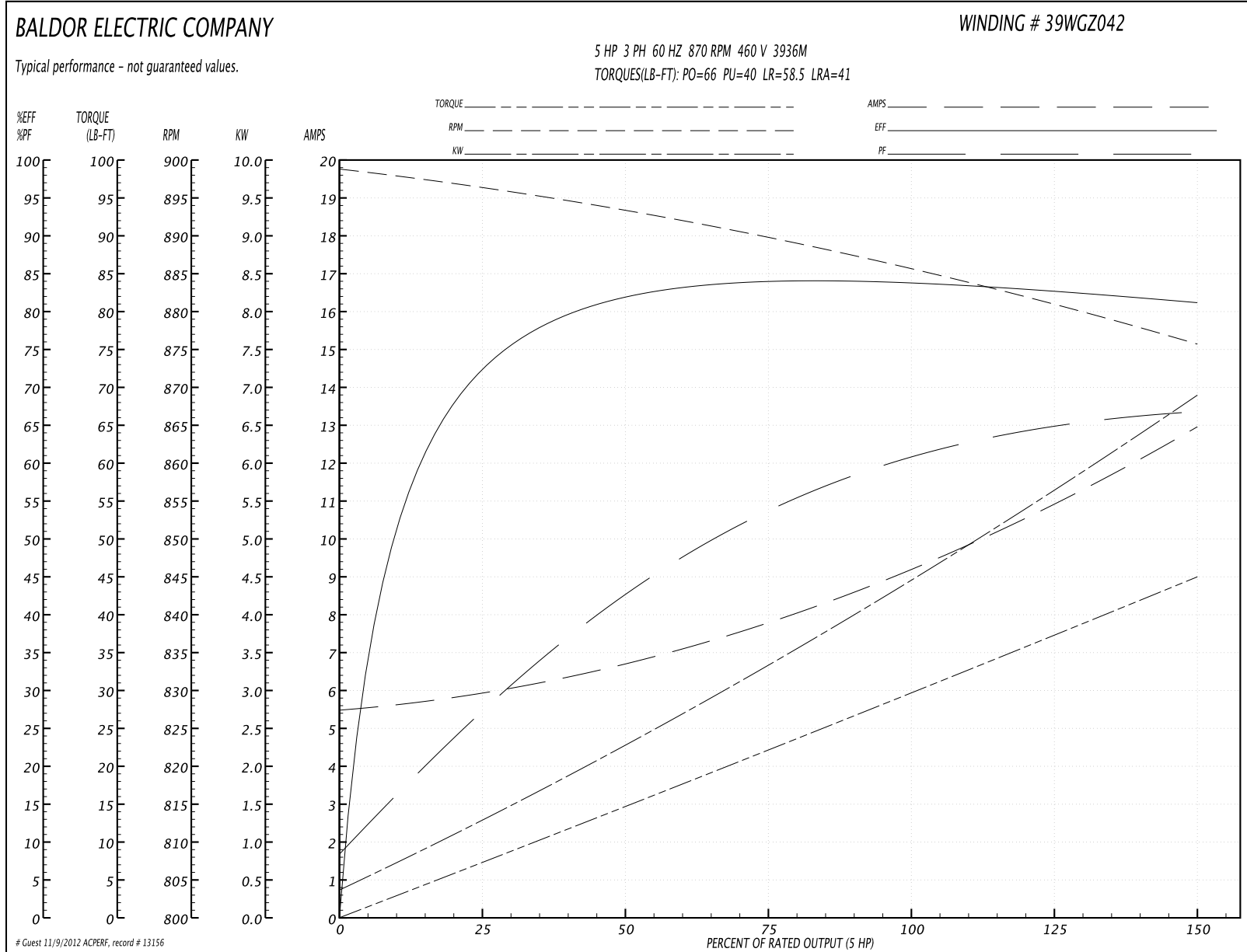
Parts List (continued)		
Part Number	Description	Quantity
HW4500A03	GREASE FITTING, .125 NPT 1610(ALEMITE) 8	1.000 EA
HW4500A17	317400 ALEMITE GREASE RELIEF	1.000 EA
MJ1000A75	GREASE, POLYREX EM EXXON	0.030 LB
HW4500A03	GREASE FITTING, .125 NPT 1610(ALEMITE) 8	1.000 EA
HW4500A17	317400 ALEMITE GREASE RELIEF	1.000 EA
MG1000G27	PAINT- S9282E CHARCOAL GREY	0.050 GA
85XU0407A04	#4-7 X 1/4 DRIVE PIN	2.000 EA
LB1125C01	STD (STOCK) CARTON LABEL BALDOR WITH FLA	4.000 EA
LC0005E01	CONN.DIA./WARNING LABEL (LC0005/LB1119)	1.000 EA
NP1256L	ALUM UL CSA CC	1.000 EA
39PA1000	PACKAGING GROUP 39 PRINT	1.000 EA
LB5040	INSTRUCTION TAG, AC & DC	1.000 EA

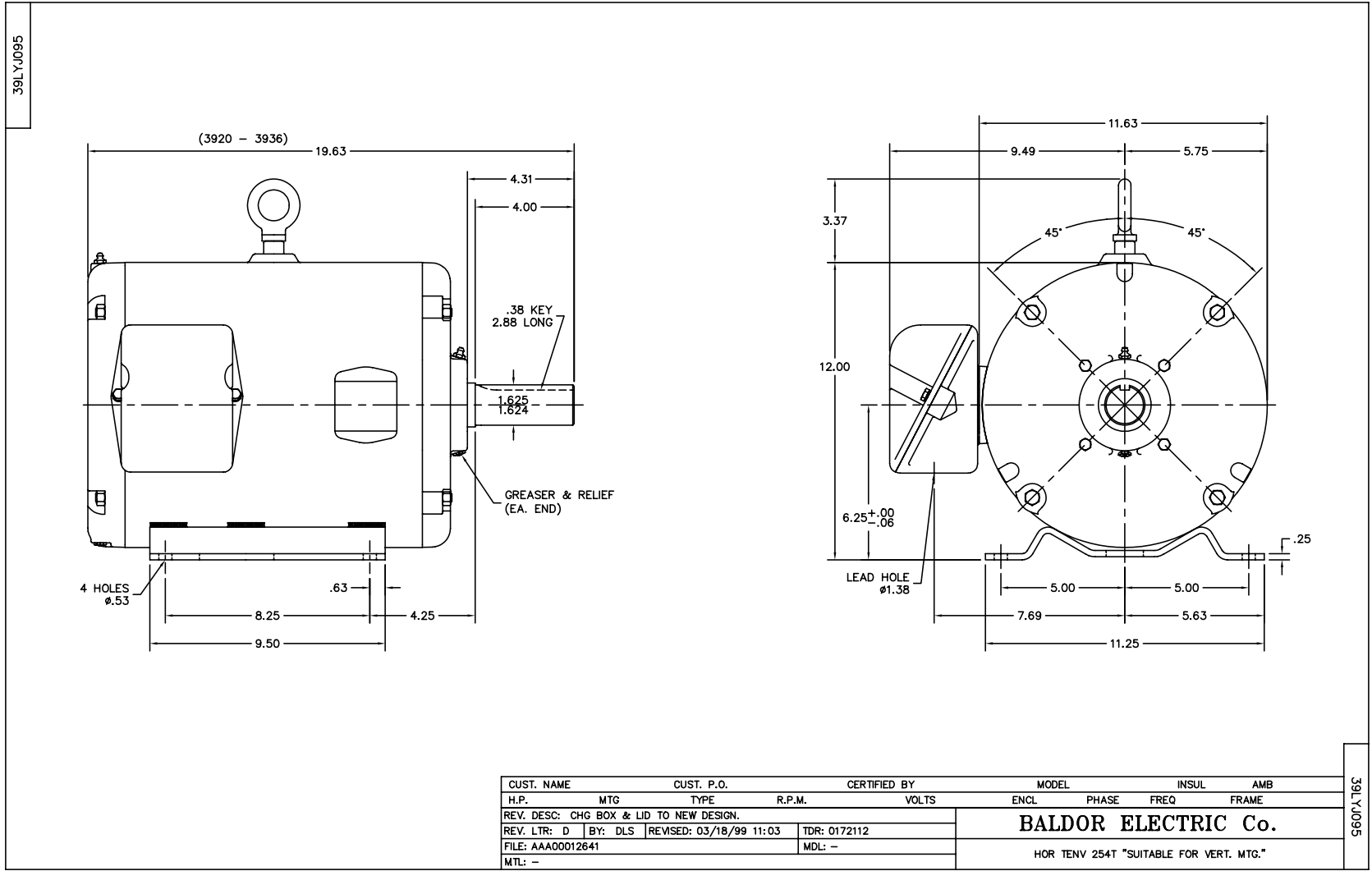
**Performance Data at 460V, 60Hz, 5.0HP (Typical performance - Not guaranteed values)**

General Characteristics			
Full Load Torque:	30.0 LB-FT	Start Configuration:	DOL
No-Load Current:	5.5 Amps	Break-Down Torque:	66.0 LB-FT
Line-line Res. @ 25°C.:	2.385 Ohms A Ph / 0.0 Ohms B Ph	Pull-Up Torque:	40.0 LB-FT
Temp. Rise @ Rated Load:	70 C	Locked-Rotor Torque:	58.5 LB-FT
Temp. Rise @ S.F. Load:	86 C	Starting Current:	41.0 Amps

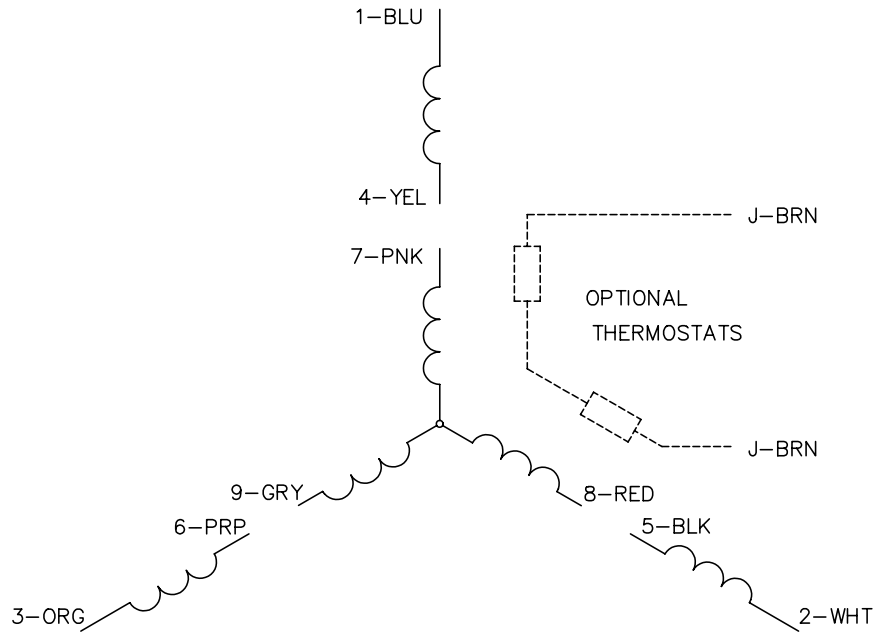
Load Characteristics							
% of Rated Load	25	50	75	100	125	150	S.F.
Power Factor:	28.0	43.0	55.0	61.0	64.0	67.0	63.0
Efficiency:	71.7	81.9	83.6	84.3	82.8	81.0	83.4
Speed:	896.0	893.0	890.0	886.0	880.0	876.0	882.0
Line Amperes:	5.9	6.8	7.8	9.2	11.1	12.9	10.34

Performance Graph at 460V, 60Hz, 5.0HP Typical performance - Not guaranteed values





CD0005

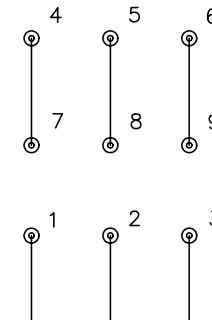


LOW VOLTAGE  
(2Y)



LINE

HIGH VOLTAGE  
(1Y)



LINE

NOTES:

1. INTERCHANGE ANY TWO LINE LEADS TO REVERSE ROTATION.
2. OPTIONAL THERMOSTATS ARE PROVIDED WHEN SPECIFIED.
3. ACTUAL NUMBER OF INTERNAL PARALLEL CIRCUITS MAY BE A MULTIPLE OF THOSE SHOWN ABOVE.
4. LEAD COLORS ARE OPTIONAL. LEADS MUST ALWAYS BE NUMBERED AS SHOWN.

REV. DESC: REVISE TO SHOW OPTIONAL COLORS			
REV. LTR: E	BY: JLP	REVISED: 01/19/99 10:15	TDR: 0171435
900000		FILE: AAA00005140	MDL: -
		MTL: -	

**BALDOR ELECTRIC Co.**

3PH, DV, 9 LEADS

CD0005