

# **BALDOR® • RELIANCE**

## **Product Information Packet**

### **AOM3611T**

**3 AIR OVERHP, 1750RPM, 3PH, 60HZ, 182T, 3622M**

Copyright © All product information within this document is subject to Baldor Electric Company copyright © protection, unless otherwise noted.

Part Detail							
Revision:	-	Status:	PRD/A	Change #:		Proprietary:	No
Type:	AC	Prod. Type:	3622M	Elec. Spec:	36WGS914	CD Diagram:	
Enclosure:	TEAO	Mfg Plant:		Mech. Spec:	36G256	Layout:	
Frame:	182T	Mounting:	F1	Poles:	04	Created Date:	06-02-2012
Base:	RG	Rotation:	R	Insulation:	B	Eff. Date:	06-12-2012
Leads:	9#16 22" LG	Literature:	Y	Elec. Diagram:		Replaced By:	

Nameplate NP1259L							
CAT.NO.	AOM3611T						
SPEC.	36G256S914G1						
HP	3 AIR OVER						
VOLTS	208-230/460						
AMP	9/4.5						
RPM	1750						
FRAME	182T	HZ	60	PH	3		
SER.F.	1.15	CODE	K	DES	B	CL	B
NEMA-NOM-EFF	85.5	PF	72				
RATING	40C AMB-CONT						
CC	USABLE AT 208V						
DE	6206	ODE	6205				
ENCL	TEAO	SN					
	1650 FPM AT 100CFM						

Parts List		
Part Number	Description	Quantity
SA245884	SA 36G256S914G1	1.000 EA
RA232769	RA 36G256S914G1	1.000 EA
S/P107-000-001	SUPER E PROC'S-FS & WS PLTS-POLYREX EM G	1.000 EA
36CB3004	36 CB CASTING W/1.09 DIA LEAD HOLE @ 6:0	1.000 EA
36GS1000SP	GASKET-CONDUIT BOX, .06 THICK #SV-330 LE	1.000 EA
51XB1016A08	10-16X 1/2HXWSSLD SERTYB	2.000 EA
11XW1032G06	10-32 X .38, TAPTITE II, HEX WSHR SLTD U	1.000 EA
HW3001B01	003SS CUP WASHER, FOR #8 SCREW	1.000 EA
36EP3101A02	FR ENDPLATE, MACH -TENV- W/GREASER, 205	1.000 EA
HW4500A01	1641B(ALEMITE)400 UNIV, GREASE FITT	1.000 EA
HW5100A05	WVY WSHR F/205 & 304 BRGS	1.000 EA
36EP3100A15	ENDPLATE, MACH	1.000 EA
HW4500A01	1641B(ALEMITE)400 UNIV, GREASE FITT	1.000 EA
10XN2520A20	1/4-20X 1 1/4 HEX HD X	2.000 EA
HW1001A25	LOCKWASHER 1/4, ZINC PLT .493 OD, .255 I	2.000 EA
XY2520A12	1/4-20 HEX NUT, DIRECTIONAL SERRATIONS	4.000 EA
36CB4516	36 LIPPED CB LID	1.000 EA
37GS1001SP	GASKET, CONDUIT BOX LID, .06 THICK LEXID	1.000 EA
51XW0832A07	8-32 X .44, TAPTITE II, HEX WSHR SLTD SE	4.000 EA
HW2501E16	3KEY, 1/4 SQ X 1.750	1.000 EA
HA7000A02	KEY RETAINER RING, 1 1/8 DIA, 1 3/8 DIA	1.000 EA
85XU0407S04	4X1/4 U DRIVE PIN STAINLESS	2.000 EA
MJ1000A75	GREASE, POLYREX EM EXXON	0.050 LB
MG1000Y03	WILKO 689.710 GOLD PAINT SUPER E	0.022 GA

Parts List (continued)		
Part Number	Description	Quantity
HA3101A23	THRUBOLT 1/4-20 X 9.625 DEMBY	4.000 EA
LB1125C02	SUPER-E (STOCK CTN LABEL SUPER-E WITH FL	1.000 EA
LC0005E01	CONN.DIA./WARNING LABEL (LC0005/LB1119)	1.000 EA
LB1357	ENERGY GUIDE LABEL (BOX LABEL)	1.000 SH
NP1259L	ALUM SUPER-E UL CSA-EEV CC NEMA PREMIUM	1.000 EA
36PA1000	PACK GROUP W/LB5001	1.000 EA

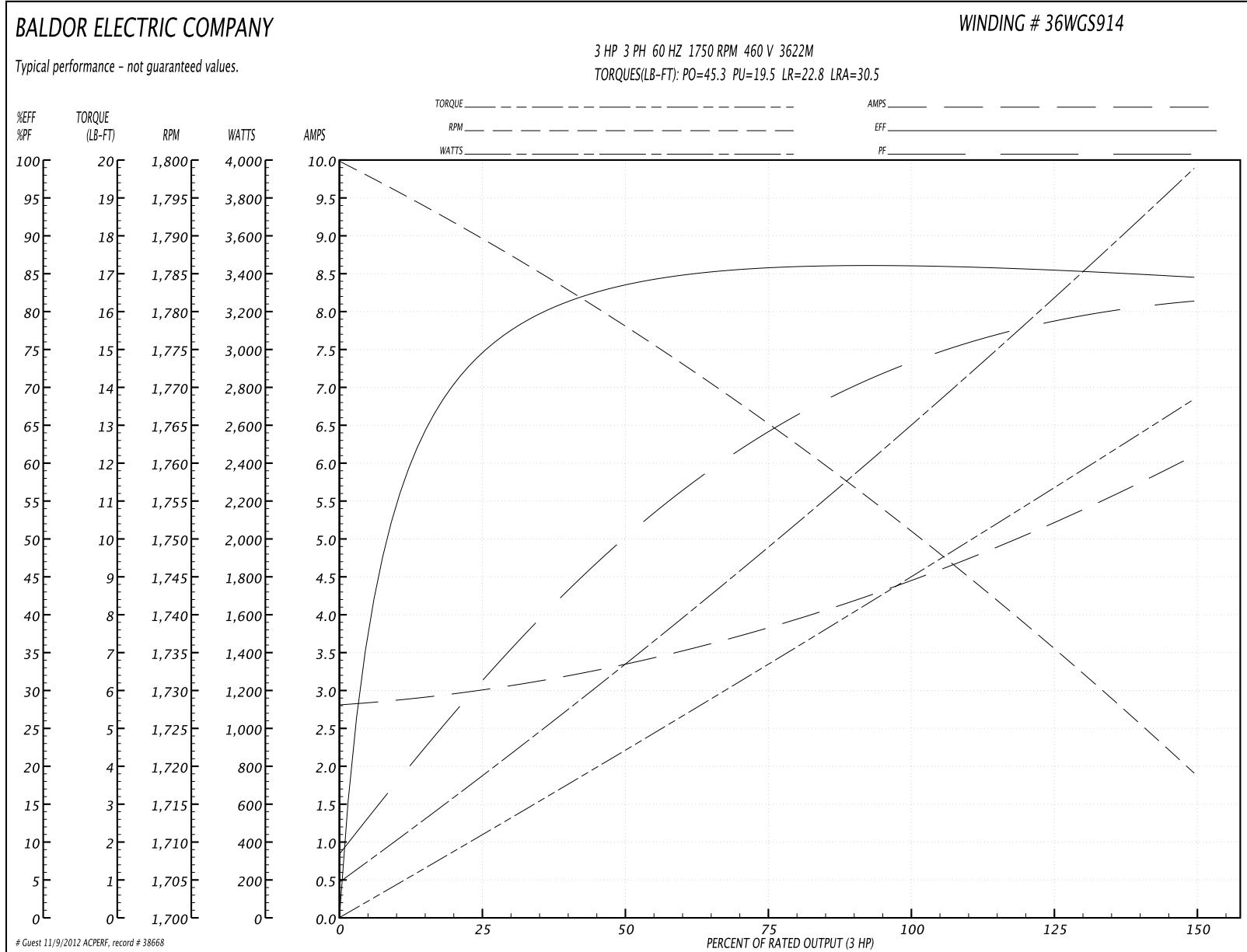
Accessories		
Part Number	Description	Multiplier
36-3301	C FACE KIT	A8
36EP1304A62SP	FLANGE MTD ENDPLATE 182-4TD -ENCL (LESS	A8

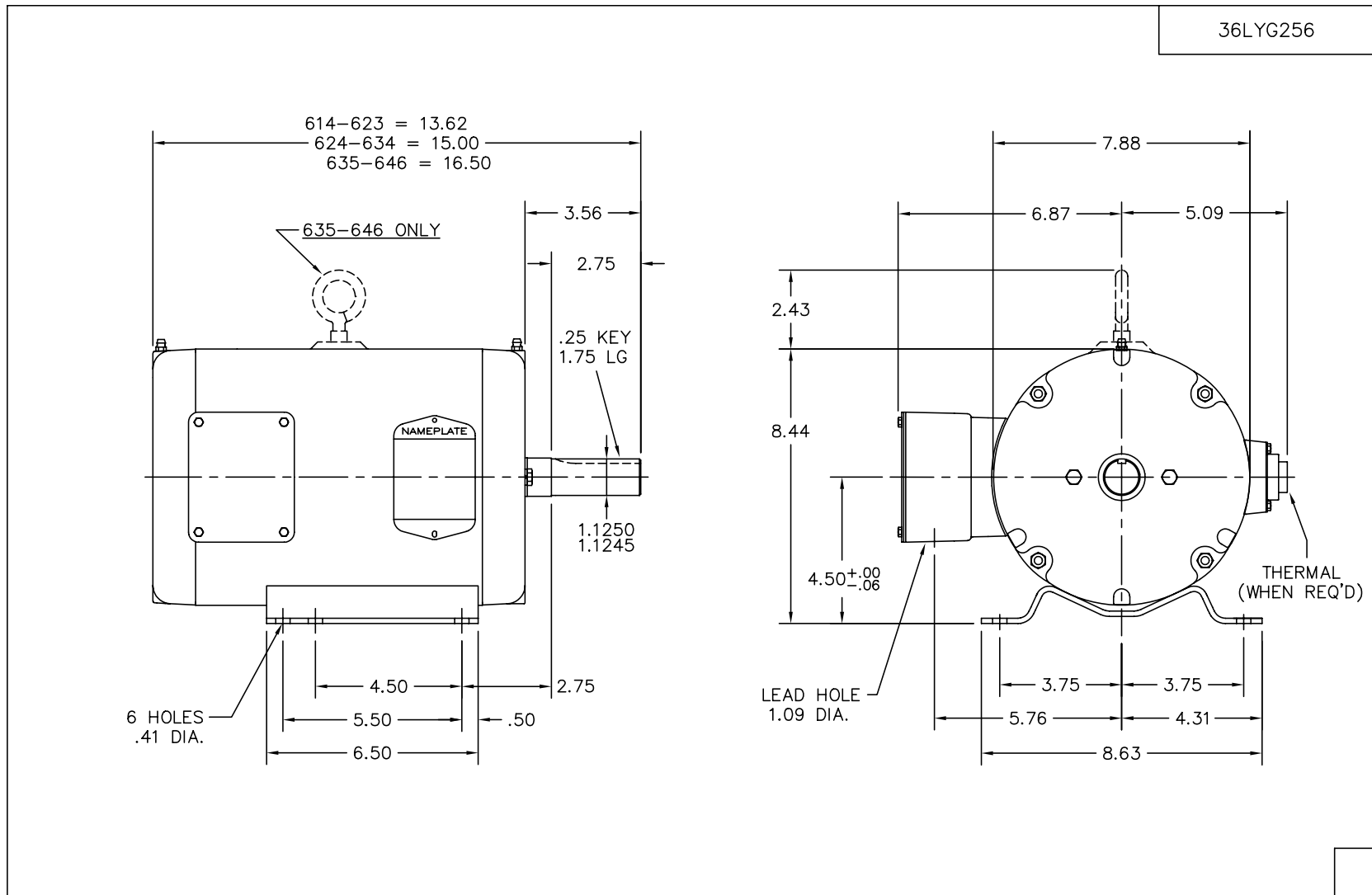
**Performance Data at 460V, 60Hz, 3.0HP (Typical performance - Not guaranteed values)**

General Characteristics			
Full Load Torque:	9.03 LB-FT	Start Configuration:	DOL
No-Load Current:	2.86 Amps	Break-Down Torque:	45.3 LB-FT
Line-line Res. @ 25°C.:	4.7148 Ohms A Ph / 0.0 Ohms B Ph	Pull-Up Torque:	19.5 LB-FT
Temp. Rise @ Rated Load:	64 C	Locked-Rotor Torque:	22.8 LB-FT
Temp. Rise @ S.F. Load:	75 C	Starting Current:	30.5 Amps

Load Characteristics							
% of Rated Load	25	50	75	100	125	150	S.F.
Power Factor:	32.0	51.0	65.0	72.0	78.0	82.0	76.0
Efficiency:	74.4	83.3	85.9	86.1	85.7	84.7	85.9
Speed:	1789.6	1777.6	1764.6	1751.0	1735.5	1718.8	1742.0
Line Amperes:	2.95	3.32	3.83	4.54	5.26	6.06	4.97

Performance Graph at 460V, 60Hz, 3.0HP Typical performance - Not guaranteed values



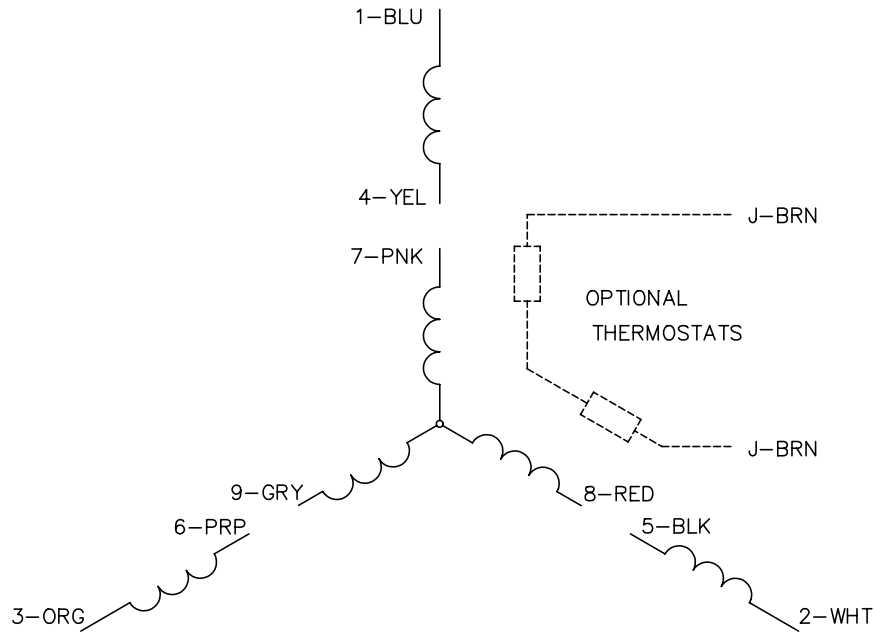


CUST. NAME		CUST. P.O.		CERTIFIED BY		MODEL		INSUL		AMB	
H.P.		MTG		TYPE		R.P.M.		VOLTS		ENCL	
REV. LTR: G		BY: JED		REVISED: 02/17/99 8:48		TDR: 0171568		PHASE		FREQ	
9929A L9E		FILE: AAA00003794		MDL: -		MTL: -		FRAME		FREQ	
<b>BALDOR ELECTRIC Co.</b>								SPL HORZ 182-4T TEAO 36M - W/LK'D BRG			

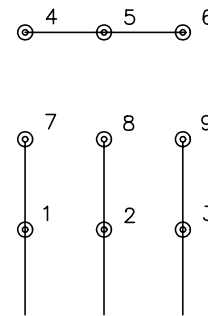
36LYG256



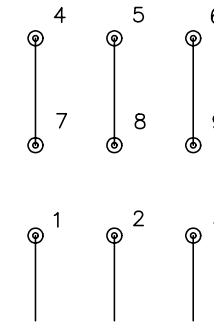
CD0005



LOW VOLTAGE  
(2Y)



HIGH VOLTAGE  
(1Y)



NOTES:

1. INTERCHANGE ANY TWO LINE LEADS TO REVERSE ROTATION.
2. OPTIONAL THERMOSTATS ARE PROVIDED WHEN SPECIFIED.
3. ACTUAL NUMBER OF INTERNAL PARALLEL CIRCUITS MAY BE A MULTIPLE OF THOSE SHOWN ABOVE.
4. LEAD COLORS ARE OPTIONAL. LEADS MUST ALWAYS BE NUMBERED AS SHOWN.

REV. DESC: REVISE TO SHOW OPTIONAL COLORS			
REV. LTR: E	BY: JLP	REVISED: 01/19/99 10:15	TDR: 0171435
90000		FILE: AAA00005140	MDL: -
		MTL: -	

**BALDOR ELECTRIC Co.**

3PH, DV, 9 LEADS

CD0005