

# **BALDOR**® • *RELIANCE*

## **Product Information Packet**

# **AOM3714T**

**10HP,1770RPM,3PH,60HZ,215T,3740M,TENV,F1**

Copyright © All product information within this document is subject to Baldor Electric Company copyright © protection, unless otherwise noted.

| Part Detail |             |             |       |                |          |               |            |
|-------------|-------------|-------------|-------|----------------|----------|---------------|------------|
| Revision:   | C           | Status:     | PRD/A | Change #:      |          | Proprietary:  | No         |
| Type:       | AC          | Prod. Type: | 3740M | Elec. Spec:    | 37WGS275 | CD Diagram:   |            |
| Enclosure:  | TEAO        | Mfg Plant:  |       | Mech. Spec:    | 37F359   | Layout:       |            |
| Frame:      | 215T        | Mounting:   | F1    | Poles:         | 04       | Created Date: | 07-18-2007 |
| Base:       | RG          | Rotation:   | R     | Insulation:    | F        | Eff. Date:    | 11-30-2009 |
| Leads:      | 9#14 36" LG | Literature: | Y     | Elec. Diagram: |          | Replaced By:  |            |

| Nameplate NP1256L |                    |      |    |                |      |       |   |  |  |
|-------------------|--------------------|------|----|----------------|------|-------|---|--|--|
| CAT.NO.           | AOM3714T           |      |    |                |      |       |   |  |  |
| SPEC.             | 37F359S275H1       |      |    |                |      |       |   |  |  |
| HP                | 10 AIR OVER        |      |    |                |      |       |   |  |  |
| VOLTS             | 208-230/460        |      |    |                |      |       |   |  |  |
| AMP               | 28-27/13.5         |      |    |                |      |       |   |  |  |
| RPM               | 1770               |      |    |                |      |       |   |  |  |
| FRAME             | 215T               | HZ   | 60 | PH             | 3    |       |   |  |  |
| SER.F.            | 1.15               | CODE | K  | DES            | A    | CLASS | F |  |  |
| NEMA-NOM-EFF      | 89.5               | PF   | 77 |                |      |       |   |  |  |
| RATING            | 40C AMB-CONT       |      |    |                |      |       |   |  |  |
| CC                |                    |      |    | USABLE AT 208V |      |       |   |  |  |
| DE                | 6307               | ODE  |    |                | 6206 |       |   |  |  |
| ENCL              | TEAO               | SN   |    |                |      |       |   |  |  |
|                   | 1700 FPM AT 170CFM |      |    |                |      |       |   |  |  |

| Parts List     |  |          |
|----------------|--|----------|
| Part Number    | Description                              | Quantity |
| SA160713       | SA 37F359S275H1                          | 1.000 EA |
| RA149298       | RA 37F359S275H1                          | 1.000 EA |
| S/P101-000-000 | EPACT PROCEDURES-FS PLANT-POLYREX EM, NO | 1.000 EA |
| HW3200A01      | 3/8-16X3/4 I-BLT WELDED F/S              | 1.000 EA |
| 37CB3004       | 37 CB CASTING W/1.09 LEAD HOLE @ 6:00    | 1.000 EA |
| 37GS1000SP     | GASKET, CONDUIT BOX STD., .06 THICK LEXI | 1.000 EA |
| 10XN2520A10    | 1/4-20X 5/8 HEX HD X                     | 2.000 EA |
| HW1001A25      | LOCKWASHER 1/4, ZINC PLT .493 OD, .255 I | 2.000 EA |
| 11XW1032G06    | 10-32 X .38, TAPTITE II, HEX WSHR SLTD U | 1.000 EA |
| 37EP3101A02    | FR ENDPLATE, 37L&M-TENV MTR, MACH        | 1.000 EA |
| HW4500A01      | 1641B(ALEMITE)400 UNIV, GREASE FITT      | 2.000 EA |
| HW5100A06      | W2420-025 WVY WSHR (WB)                  | 1.000 EA |
| 37EP3100A09    | PU ENDPLATE, MACH                        | 1.000 EA |
| HW4500A01      | 1641B(ALEMITE)400 UNIV, GREASE FITT      | 1.000 EA |
| 10XN2520A28    | 1/4-20X 1 3/4 HEX HD                     | 4.000 EA |
| HW1001A25      | LOCKWASHER 1/4, ZINC PLT .493 OD, .255 I | 4.000 EA |
| XY3118A12      | 5/16-18 HEX NUT DIRECTIONAL SERRATION    | 4.000 EA |
| 37CB4516       | LIPPED LID FOR 37 FRAME NEC KOBX         | 1.000 EA |
| 37GS1008SP     | 37 GS FOR CB LID - LEXIDE                | 1.000 EA |
| 51XW0832A07    | 8-32 X .44, TAPTITE II, HEX WSHR SLTD SE | 4.000 EA |
| HW2501F21      | KEY, 5/16 SQ X 2.375                     | 1.000 EA |
| HA7000A02      | KEY RETAINER RING, 1 1/8 DIA, 1 3/8 DIA  | 1.000 EA |
| 85XU0407S04    | 4X1/4 U DRIVE PIN STAINLESS              | 2.000 EA |
| LB1115         | LABEL,LIFTING DEVICE                     | 1.000 EA |

| Parts List (continued) |   |          |
|------------------------|---|----------|
| Part Number            | Description                             | Quantity |
| MJ1000A75              | GREASE, POLYREX EM EXXON                | 0.050 LB |
| MG1000G27              | PAINT- S9282E CHARCOAL GREY             | 0.028 GA |
| HA3104A17              | 5/16-18X13.250 T-BLT/OHIO               | 4.000 EA |
| LB1125C04              | STD-E (STOCK CTN LABEL STD-E WITH FLAG) | 1.000 EA |
| LC0005E01              | CONN.DIA./WARNING LABEL (LC0005/LB1119) | 1.000 EA |
| NP1256L                | ALUM UL CSA CC                          | 1.000 EA |
| 36PA1001               | PACKAGING GROUP                         | 1.000 EA |

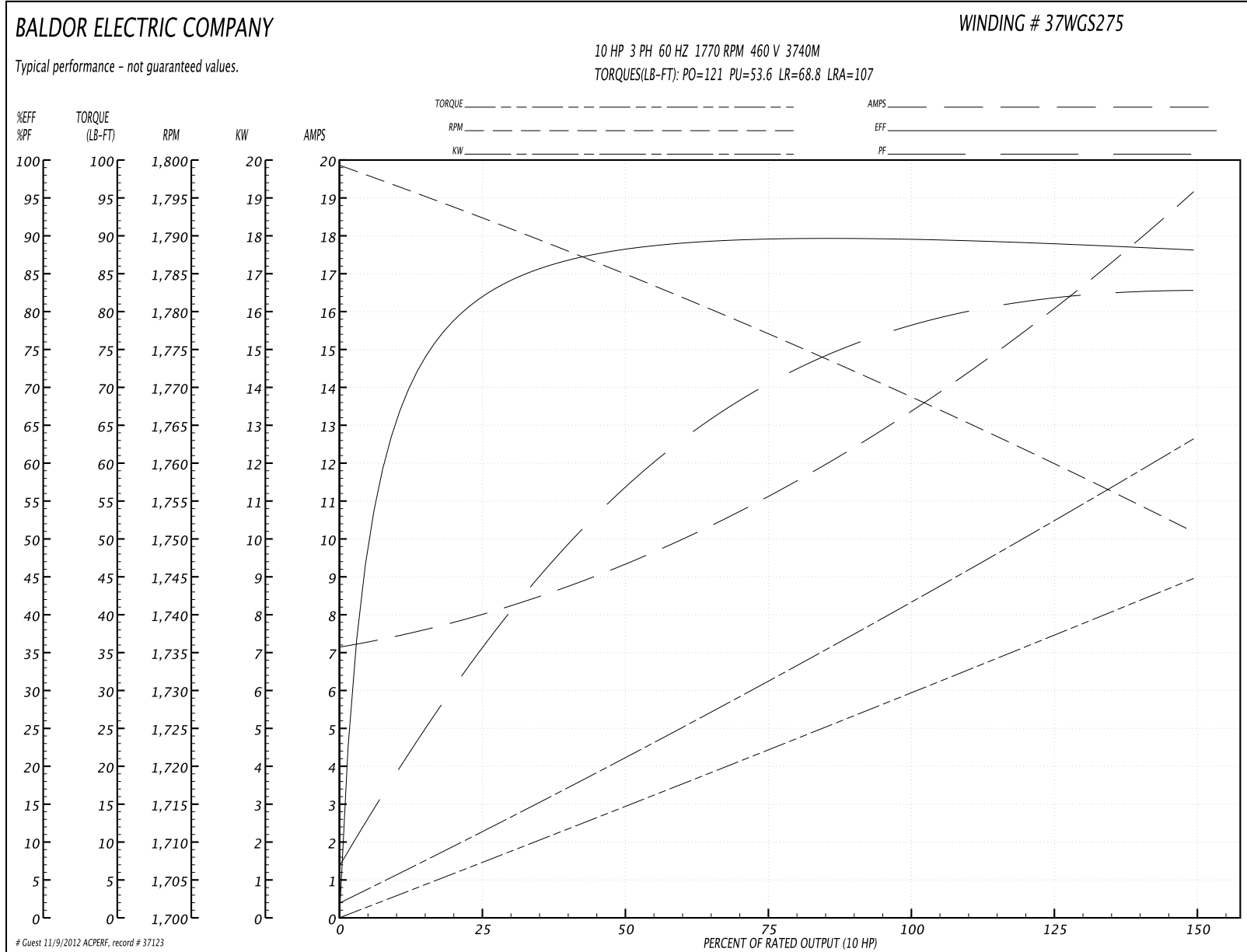
| Accessories |             |            |
|-------------|-------------|------------|
| Part Number | Description | Multiplier |
| 37-3301     | C FACE KIT  | P1         |

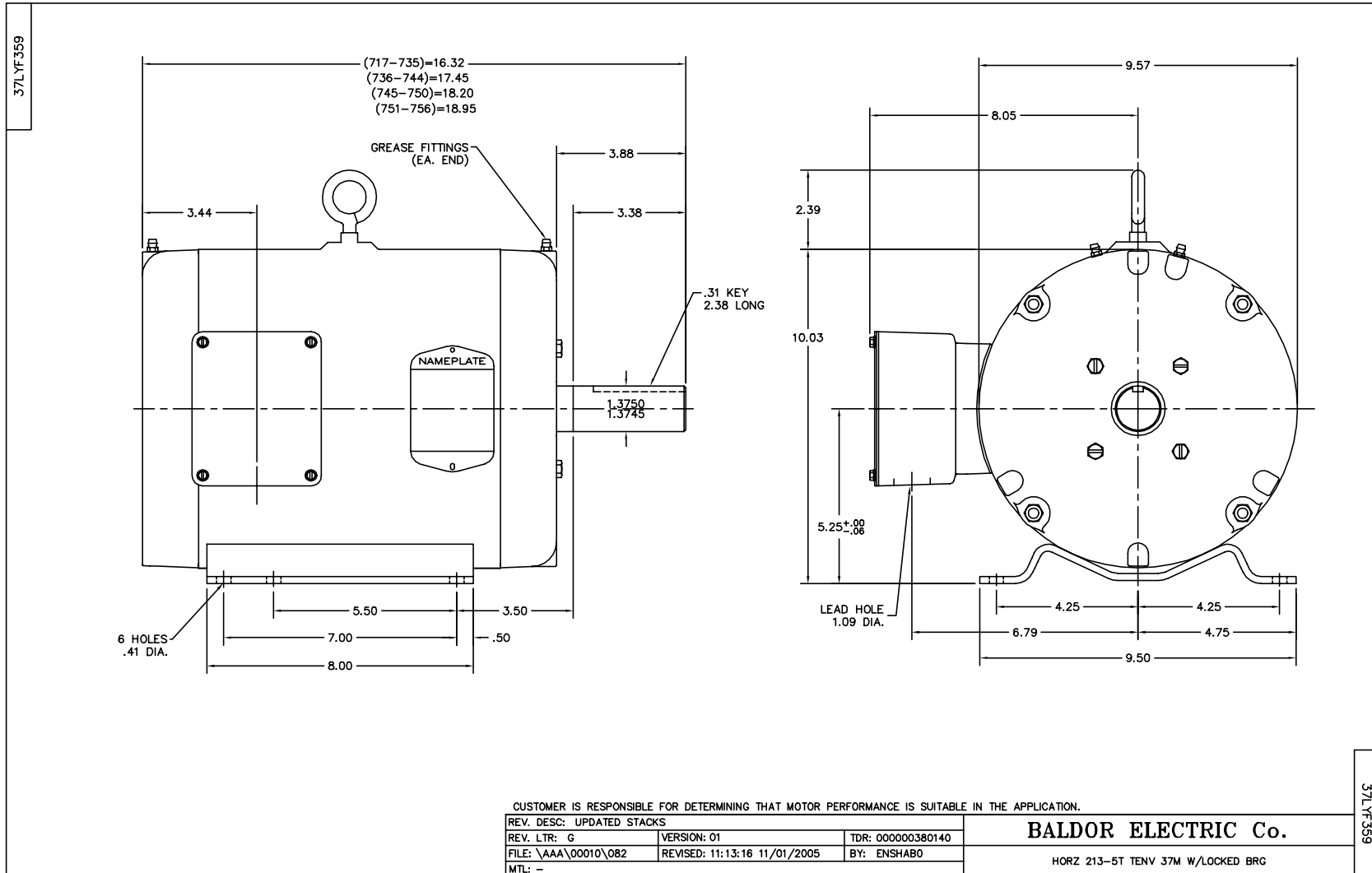
**Performance Data at 460V, 60Hz, 10.0HP (Typical performance - Not guaranteed values)**

| General Characteristics  |                                |                      |             |
|--------------------------|--------------------------------|----------------------|-------------|
| Full Load Torque:        | 29.5 LB-FT                     | Start Configuration: | DOL         |
| No-Load Current:         | 7.31 Amps                      | Break-Down Torque:   | 121.0 LB-FT |
| Line-line Res. @ 25°C.:  | 1.15 Ohms A Ph / 0.0 Ohms B Ph | Pull-Up Torque:      | 53.6 LB-FT  |
| Temp. Rise @ Rated Load: | 78 C                           | Locked-Rotor Torque: | 68.8 LB-FT  |
| Temp. Rise @ S.F. Load:  | 92 C                           | Starting Current:    | 107.0 Amps  |

| Load Characteristics |        |        |        |        |        |        |        |
|----------------------|--------|--------|--------|--------|--------|--------|--------|
| % of Rated Load      | 25     | 50     | 75     | 100    | 125    | 150    | S.F.   |
| Power Factor:        | 36.0   | 58.0   | 70.0   | 77.0   | 81.0   | 84.0   | 79.0   |
| Efficiency:          | 81.5   | 88.6   | 89.4   | 89.6   | 89.0   | 88.1   | 89.2   |
| Speed:               | 1793.0 | 1785.0 | 1777.0 | 1769.0 | 1760.0 | 1751.0 | 1764.0 |
| Line Amperes:        | 7.82   | 9.21   | 11.0   | 13.5   | 16.2   | 19.0   | 15.1   |

Performance Graph at 460V, 60Hz, 10.0HP Typical performance - Not guaranteed values



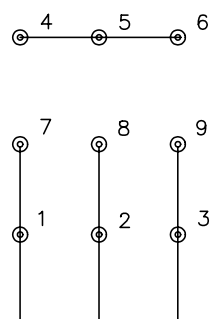




CD0005

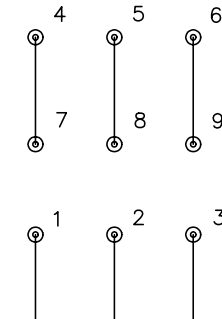


LOW VOLTAGE  
(2Y)



LINE

HIGH VOLTAGE  
(1Y)



LINE

NOTES:

1. INTERCHANGE ANY TWO LINE LEADS TO REVERSE ROTATION.
2. OPTIONAL THERMOSTATS ARE PROVIDED WHEN SPECIFIED.
3. ACTUAL NUMBER OF INTERNAL PARALLEL CIRCUITS MAY BE A MULTIPLE OF THOSE SHOWN ABOVE.
4. LEAD COLORS ARE OPTIONAL. LEADS MUST ALWAYS BE NUMBERED AS SHOWN.

|   |         |                         |              |
|---|---------|-------------------------|--------------|
| REV. DESC: REVISE TO SHOW OPTIONAL COLORS |         |                         |              |
| REV. LTR: E                               | BY: JLP | REVISED: 01/19/99 10:15 | TDR: 0171435 |
| 90000                                     |         | FILE: AAA00005140       | MDL: -       |
|   |         | MTL: -                  |              |

**BALDOR ELECTRIC Co.**

3PH, DV, 9 LEADS

CD0005