

BALDOR® • **RELIANCE**

Product Information Packet

BM3538

.5HP,1725RPM,3PH,60HZ,56,BRAKE,3420M

Copyright © All product information within this document is subject to Baldor Electric Company copyright © protection, unless otherwise noted.

Part Detail							
Revision:	X	Status:	PRD/A	Change #:		Proprietary:	No
Type:	AC	Prod. Type:	3420M	Elec. Spec:	34WG0097	CD Diagram:	
Enclosure:	TENV	Mfg Plant:		Mech. Spec:	34K044	Layout:	
Frame:	56	Mounting:	F1	Poles:	04	Created Date:	
Base:	RG	Rotation:	R	Insulation:	B	Eff. Date:	03-23-2011
Leads:	9#18	Literature:		Elec. Diagram:		Replaced By:	

Nameplate NP1256L									
CAT.NO.	BM3538								
SPEC.	34K44-97-B								
HP	.5								
VOLTS	208-230/460								
AMP	1.9-1.8/9								
RPM	1725								
FRAME	56	HZ	60	PH	3				
SER.F.	1.00	CODE	K	DES	B	CLASS	B		
NEMA-NOM-EFF	75.5	PF	69						
RATING	40C AMB-CONT								
CC				USABLE AT 208V	1.9				
DE	6203	ODE	6203						
ENCL	TENV	SN							

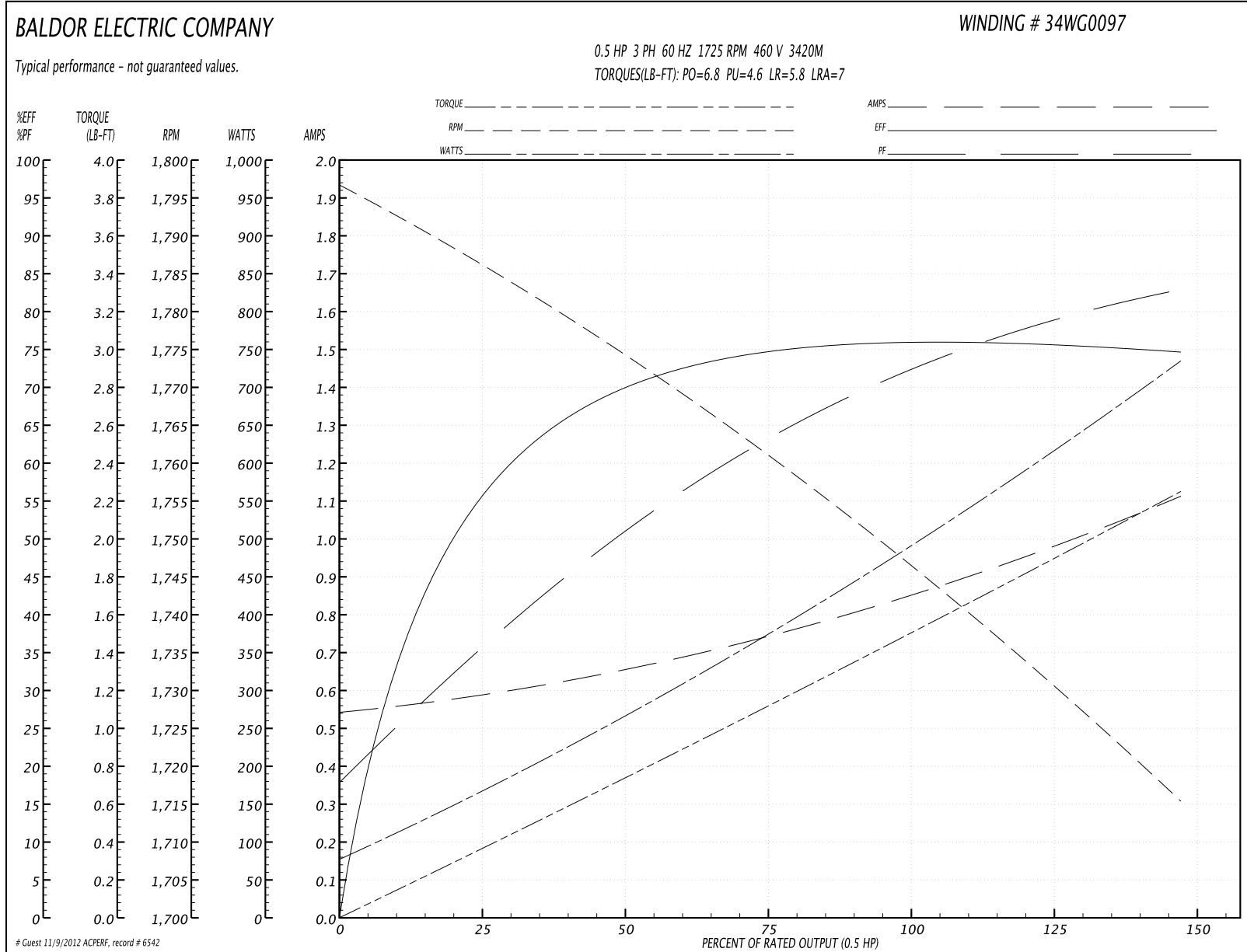
Parts List		
Part Number	Description	Quantity
SA008179	SA 34K44-97-B	1.000 EA
RA004626	RA 34K44-97-B	1.000 EA
NS2512A01	INSULATOR, CONDUIT BOX X	1.000 EA
34CB3002A	CB CAST W/.88 DIA HOLE	1.000 EA
34GS1029A01	GASKET, CONDUIT BOX	1.000 EA
51XB1016A07	10-16 X 7/16 HXWSSLD SERTYB	2.000 EA
11XW1032G06	10-32 X .38, TAPTITE II, HEX WSHR SLTD U	1.000 EA
34EP3900T09	FR ENDPLATE, MACH	1.000 EA
HW5100A03SP	WAVY WASHER (W1543-017)	1.000 EA
34EP3102A02SP	FR/PU ENDPLATE, MACH	1.000 EA
XY1032A02	10-32 HEX NUT DIRECTIONAL SERRATION	4.000 EA
18XN2520A08	1/4-20X1/2 FLAT HD SLTD X	2.000 EA
HW2500A13	KEY, USA #605, WOODRUFF	1.000 EA
34CB4517	CB LID 4 MTG HOLES .22 DIA STAMPED, FOR	1.000 EA
34GS1031A01	GASKET, FLAT CONDUIT BOX LID (LEXIDE)	1.000 EA
51XW0832A07	8-32 X .44, TAPTITE II, HEX WSHR SLTD SE	4.000 EA
HW2501D13SP	KEY, 3/16 SQ X 1.375	1.000 EA
HA7000A04	KEY RETAINER 0.625 DIA SHAFTS	1.000 EA
MG1000G27	PAINT- S9282E CHARCOAL GREY	0.014 GA
10XF0440S02	04-40 X 1/8 TYPE F HEX HD STAINLESS STIC	2.000 EA
LB1185	LABEL,BRAKE CONNECTION (ON ROLLS)	1.000 EA
WD4006C05	WIRENUT, G-B #13-003 ORGSIZE 73B,105C B	3.000 EA
HA3100A44	THRUBOLT 10-32 X 8.000	4.000 EA
48BK6101BP-SP	1-048-161-01-BP- BRAKE	1.000 EA

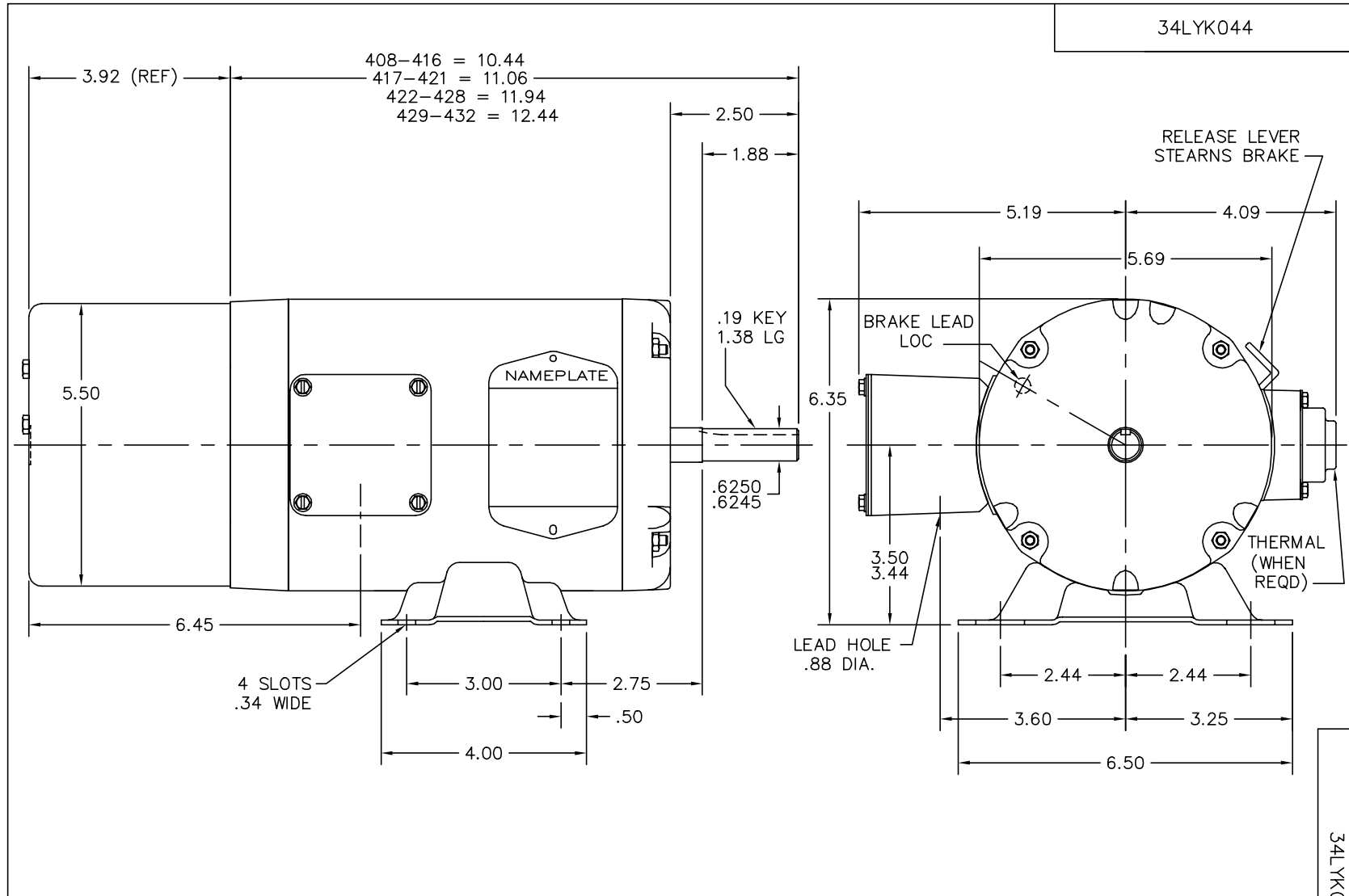
Parts List (continued)		
Part Number	Description	Quantity
LB1125C01	STD (STOCK) CARTON LABEL BALDOR WITH FLA	1.000 EA
LC0005E01	CONN.DIA./WARNING LABEL (LC0005/LB1119)	1.000 EA
NP1256L	ALUM UL CSA CC	1.000 EA
27PA1001	PACKAGING GROUP	1.000 EA

Performance Data at 460V, 60Hz, 0.5HP (Typical performance - Not guaranteed values)

General Characteristics							
Full Load Torque:	1.5 LB-FT			Start Configuration:	DOL		
No-Load Current:	0.54 Amps			Break-Down Torque:	6.8 LB-FT		
Line-line Res. @ 25°C.:	27.56 Ohms A Ph / 0.0 Ohms B Ph			Pull-Up Torque:	4.6 LB-FT		
Temp. Rise @ Rated Load:	57 C			Locked-Rotor Torque:	5.8 LB-FT		
Temp. Rise @ S.F. Load:				Starting Current:	7.0 Amps		
Load Characteristics							
% of Rated Load	25	50	75	100	125	150	S.F.
Power Factor:	38.0	53.0	65.0	71.0	75.0	81.0	0.0
Efficiency:	55.0	69.0	74.0	78.0	75.5	74.4	0.0
Speed:	1787.0	1774.0	1760.0	1749.0	1728.0	1717.0	0.0
Line Amperes:	0.6	0.65	0.74	0.84	1.0	1.1	0.0

Performance Graph at 460V, 60Hz, 0.5HP Typical performance - Not guaranteed values





CUSTOMER IS RESPONSIBLE FOR DETERMINING THAT BALDOR'S PRODUCT WILL PERFORM SUITABLY IN THE INTENDED APPLICATION.

REV. DESC: FROZE FREP MTG RABBET & BRK LEAD EXIT IN FR VIEW		
REV. LTR: E	VERSION: 02	TDR: 000000509617
FILE: \AAA\00026\918	REVISED: 04:15:01 08/21/2009	
MTL: -	BY: ENMARHO	

BALDOR • DODGE • RELIANCE

STD HORZ MODEL 34M NEMA 56 TENV W/INT CONNECTED BRAKE

SH 1 of 1

34LYK044

CD0005

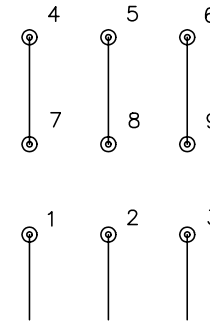


LOW VOLTAGE
(2Y)



LINE

HIGH VOLTAGE
(1Y)



LINE

NOTES:

1. INTERCHANGE ANY TWO LINE LEADS TO REVERSE ROTATION.
2. OPTIONAL THERMOSTATS ARE PROVIDED WHEN SPECIFIED.
3. ACTUAL NUMBER OF INTERNAL PARALLEL CIRCUITS MAY BE A MULTIPLE OF THOSE SHOWN ABOVE.
4. LEAD COLORS ARE OPTIONAL. LEADS MUST ALWAYS BE NUMBERED AS SHOWN.

REV. DESC: REVISE TO SHOW OPTIONAL COLORS			
REV. LTR: E	BY: JLP	REVISED: 01/19/99 10:15	TDR: 0171435
90000		FILE: AAA00005140	MDL: -
		MTL: -	

BALDOR ELECTRIC Co.

3PH, DV, 9 LEADS

CD0005