

BALDOR® • *RELIANCE*

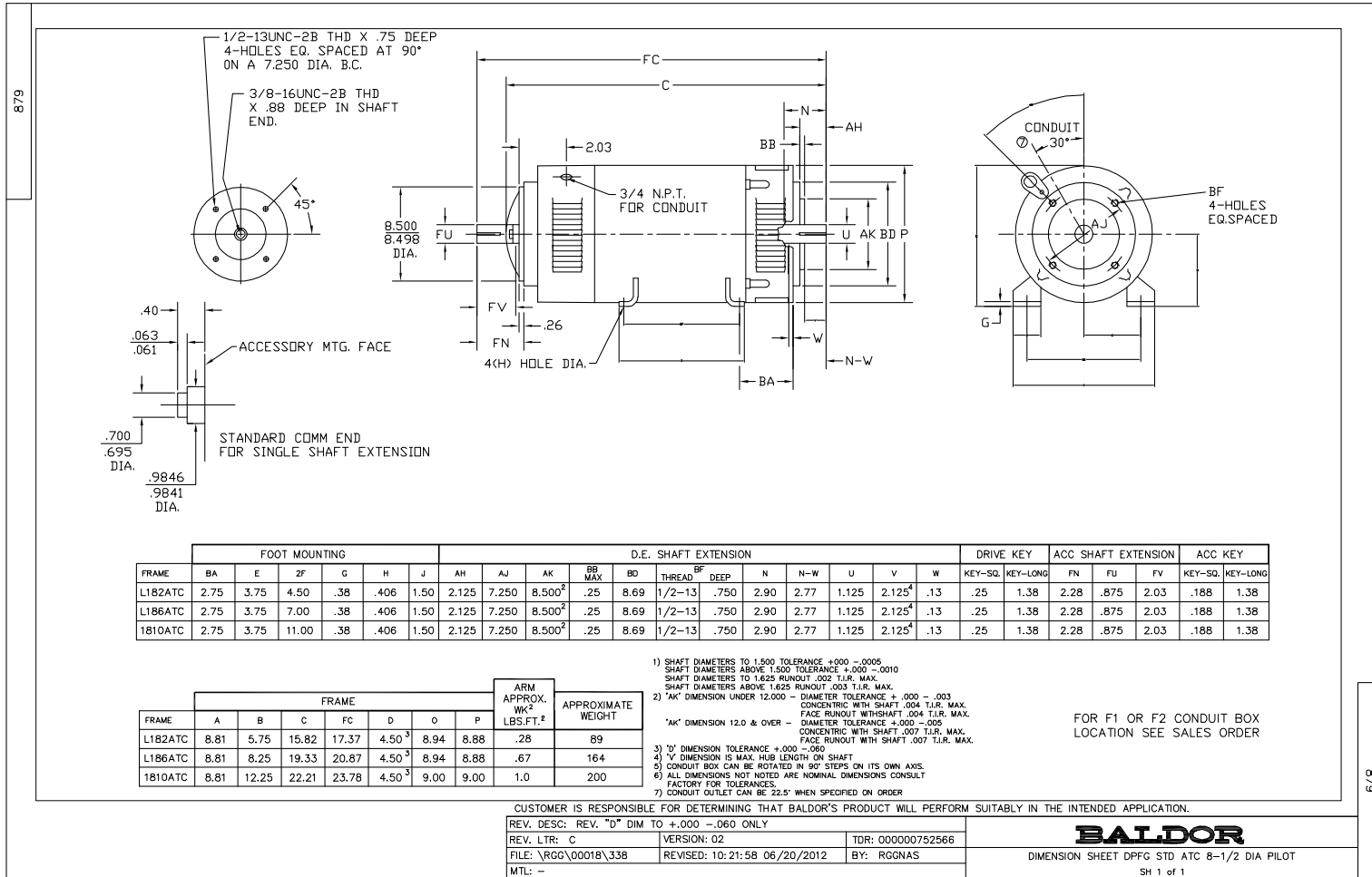
Product Information Packet

CD2005P-2

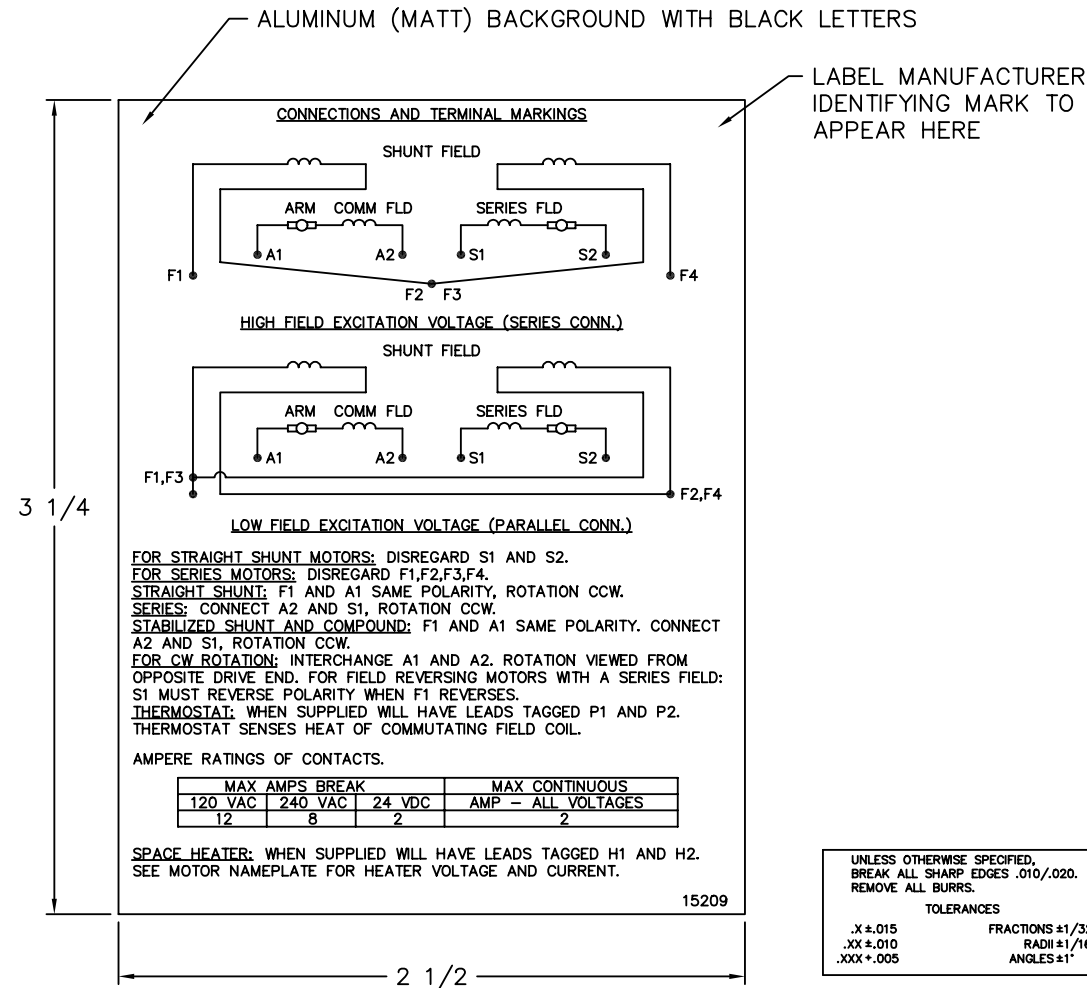
5HP, 1750/2300RPM, DC, L186ATC, DPFG, TOD

Copyright © All product information within this document is subject to Baldor Electric Company copyright © protection, unless otherwise noted.

Part Detail			
Type:	DC	Prod. Type:	TR
Power Code:	D	Weight:	170
Frame Group:	L 0186ATC	Mounting Pos.:	F3
HP:	5	Enclosure:	DPFG
RPM:	1750/2300	Wound:	STR. SHUNT
Service Factor:	1.0	Arm V:	240
Arm A:	17.70	Field V:	120/ 240
Field A:	1.28/.64	Field A Hot:	.96-.48/.48-.24
Insulation Class:	F	Ambient:	40
Duty:	CONT	DE Bearing:	6206
ODE Bearing:	6205	Brushes:	18044-4
Brush Qty.:			



15209



NOTE:
 MATERIAL .005 MINIMUM FULL HARD ALUMINUM DULL FINISH.
 TEMP. RANGE -20°C TO +125°C MAXIMUM.
 FOR INDOOR AND OUTDOOR MOUNTING BACK.
 METAL, PRESSURE SENSITIVE BACK. MUST MEET CSA STANDARD.
 THE CSA IDENTIFYING MARK OF THE LABEL MANUFACTURER MUST APPEAR IN THE UPPER RIGHT HAND CORNER AS INDICATED.

MATL: NOTED			
REV:	G	CHANGE ALL "NAMEPLATE" TEXT TO "LABEL"	
60291	SCALE: -	BY: BKW	REVISED: 02/19/97
	FILE: CHB00002485	TDR: 0115147	

BALDOR ELECTRIC Co.

LABEL, CONNECTIONS AND TERMINAL MARKINGS DC

15209


REL S.O.	FRAME	RATING	RPM	ARM. VOLTS	ARM. AMPS	
	L186	5.00HP	1750	240	17.7	
WINDING TYPE		S.F.	ENCL.	AMB °C/INSUL	DUTY	FIELD VOLTS
STRAIGHT SHUNT		1.0	DRG	40/F	CONT	240
POWER CODE		TYPE	WK 2 (LB-FT ²)	HOT ARM. CIR. RES.	FLD. AMPS@25 °C	HOT FIELD RES
D		TR	.7353	1.28	.642	495

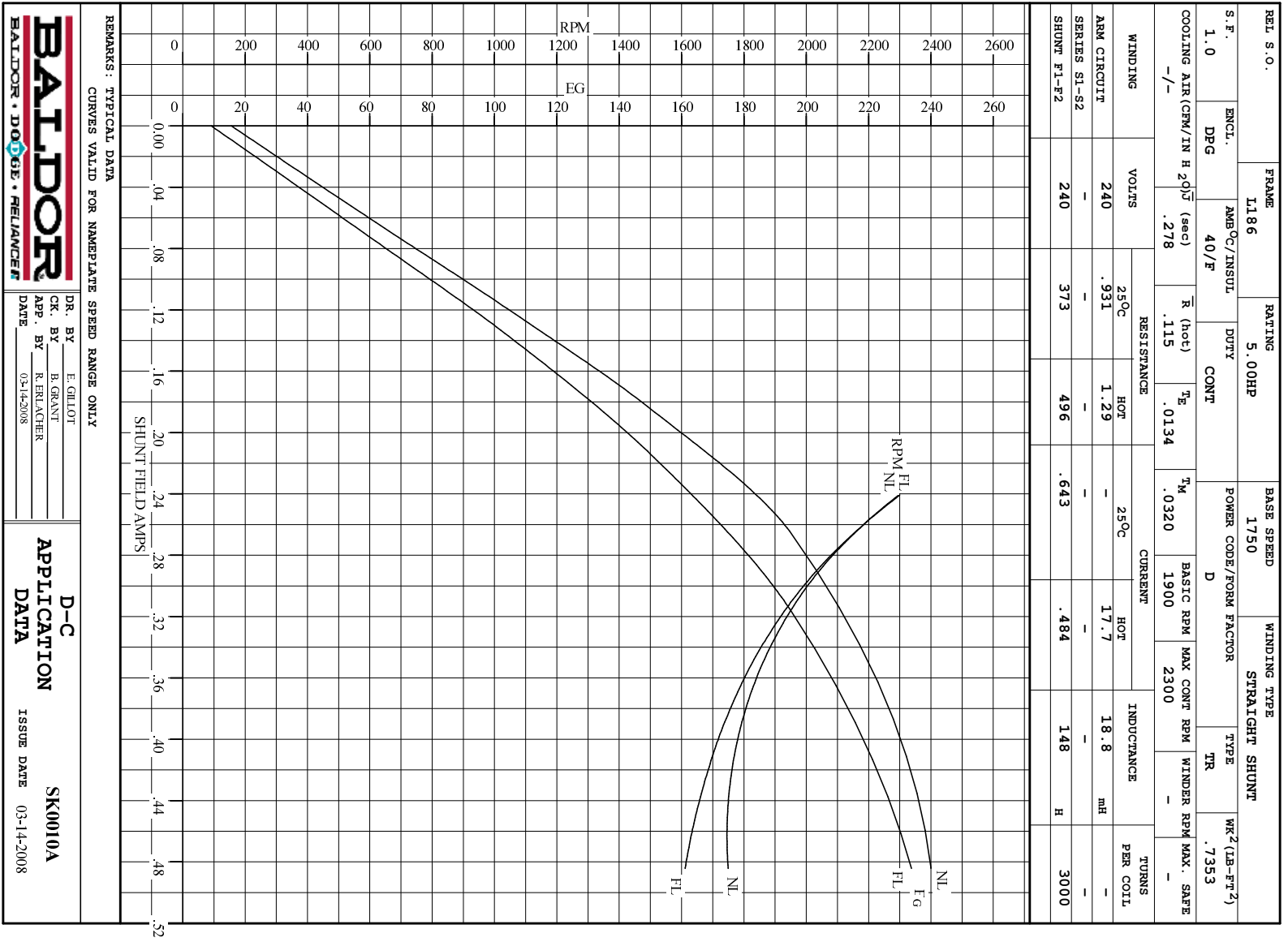
ARM. CIR. IND. (mh)	FIELD IND. (H)	COOLING AIR (CFM/IN H 20)	TURNS PER COIL SHUNT/SERIES	TEST DATE
18.8	148	-/-	3000/.00000	-

LOAD PERFORMANCE					
LOAD	AMPERES	TORQUE IN LB.-FT.	OUTPUT IN HP	RPM	% EFFICIENCY
NO LOAD	.55	0	0	1738	0
1/4	4.4	3.72	1.21	1709	74.8
2/4	8.8	7.96	2.52	1662	82.6
3/4	13	12.0	3.75	1643	83.8
4/4	18	15.9	4.91	1620	83.2
O.L.	27	22.9	7.00	1603	80.0

RPM VS. FIELD AMPS			Eg VS. FIELD AMPS		
FIELD AMPS	RPM N.L.	RPM F.L.	Eg N.L. @ BASE SPEED	Eg F.L. @ BASE SPEED	
.484	1738	1620	240	233	
.423	1757	1680	237	224	
.362	1835	1795	227	209	
.301	1998	1985	209	189	
.240	2296	2300	182	163	

REMARKS: TYPICAL DATA

 BALDOR • DOUG • RELIANCE	DR. BY E. GILLIOT	D-C MOTOR PERFORMANCE DATA DK0010A ISSUE DATE 03-14-2008
	CK. BY B. GRANT APP. BY R. ERLACHER DATE 03-14-2008	

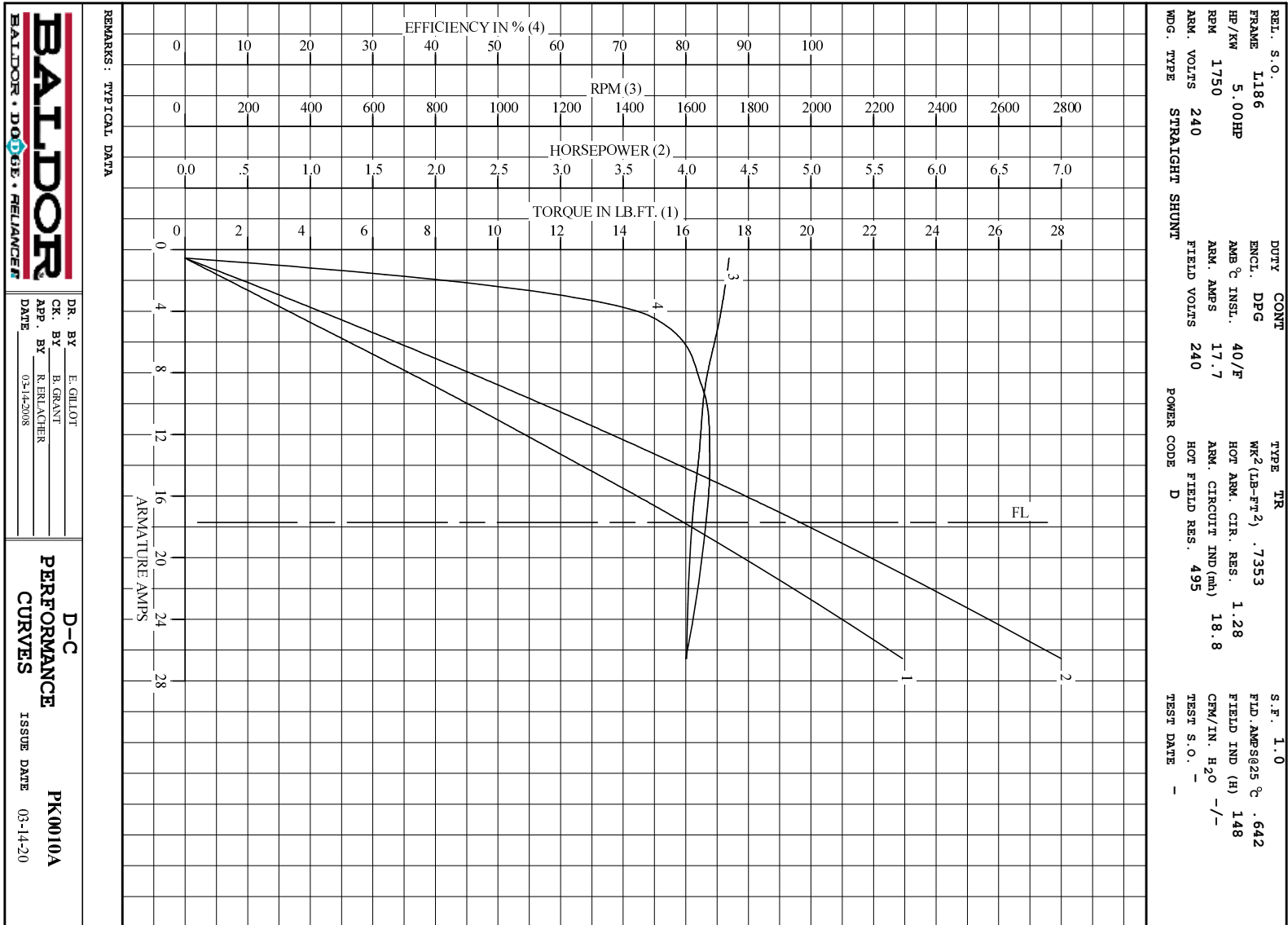


BALDOR
BALDOR • DOUG • RELIANCE

DR. BY E. GILLOT
CK. BY B. GRANT
APP. BY R. REINACHER
DATE 03-14-2008

D-C APPLICATION DATA

SK0010A
ISSUE DATE 03-14-2008



DR. BY E. GILLOT
 CK. BY B. GRANT
 APP. BY R. RELIANCE
 DATE 03-14-2008

D-C
PERFORMANCE
CURVES ISSUE DATE 03-14-20
PK0010A