

BALDOR® • RELIANCE

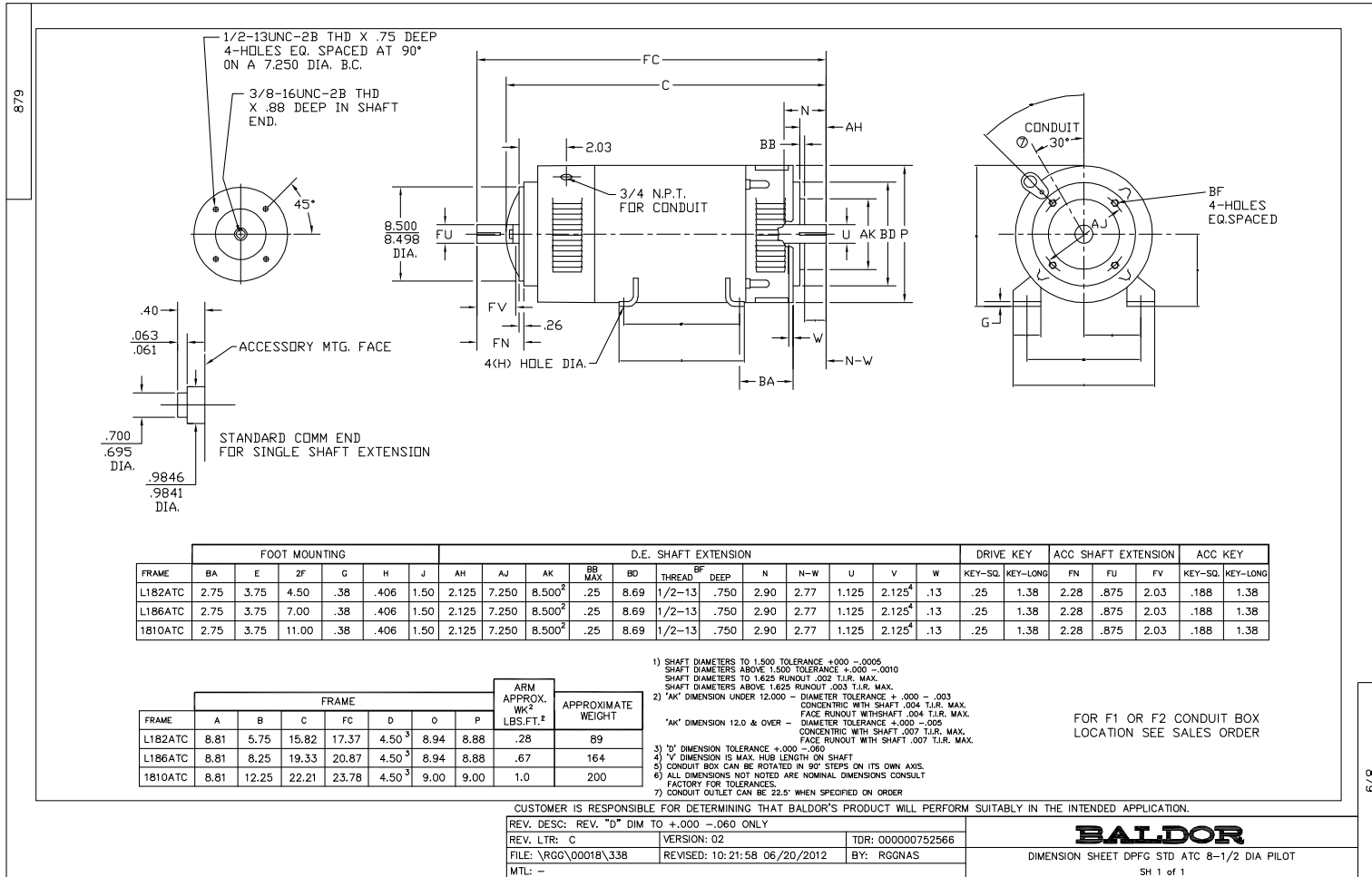
Product Information Packet

CD2007P-2

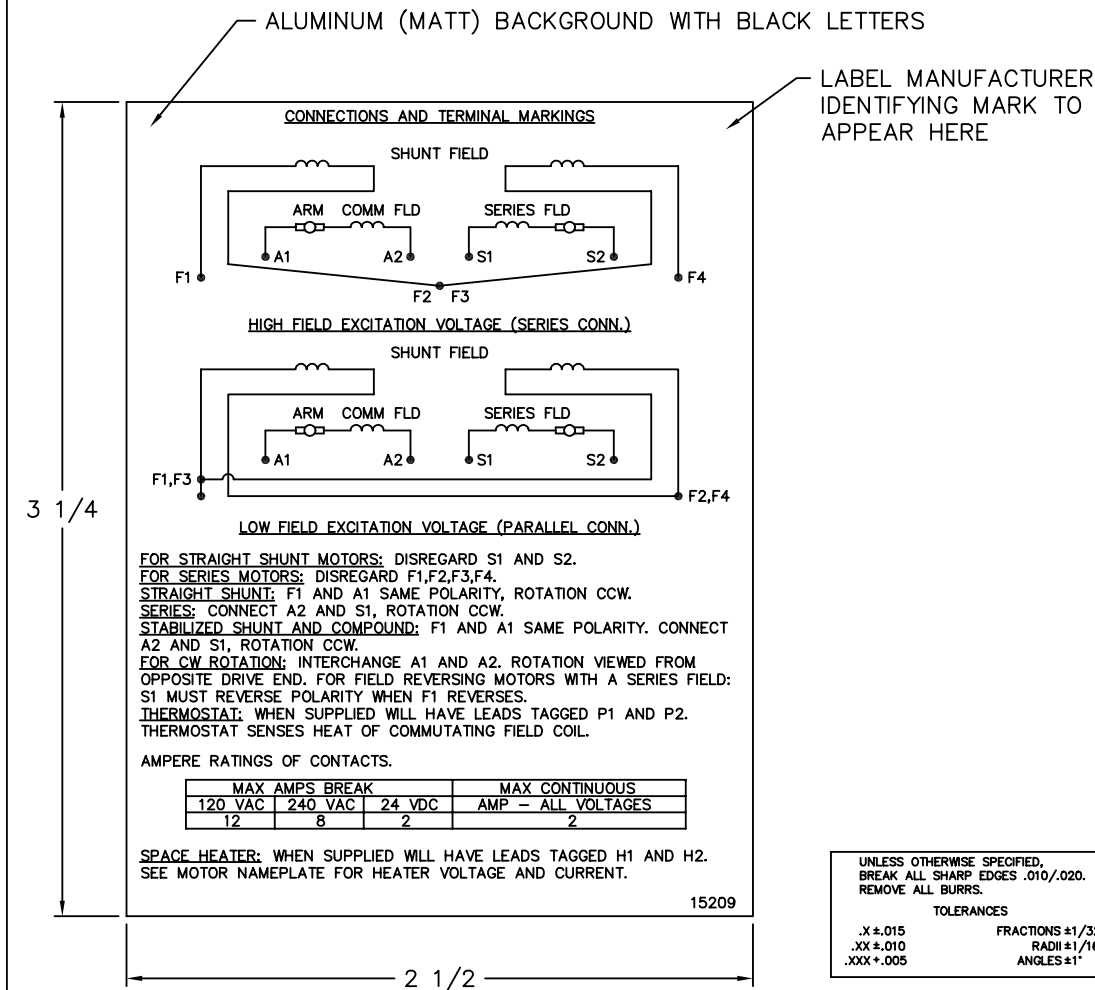
7.5HP, 1750/2300RPM, DC, 1810ATC, DPFG, TOD

Copyright © All product information within this document is subject to Baldor Electric Company copyright © protection, unless otherwise noted.

Part Detail			
Type:	DC	Prod. Type:	T
Power Code:	D	Weight:	222
Frame Group:	1810ATC	Mounting Pos.:	F3
HP:	7.5	Enclosure:	DPFG
RPM:	1750/2300	Wound:	STR. SHUNT
Service Factor:	1.0	Arm V:	240
Arm A:	27.80	Field V:	120/ 240
Field A:	1.64/.82	Field A Hot:	1.18-.60/.59-.3
Insulation Class:	F	Ambient:	40
Duty:	CONT	DE Bearing:	6206
ODE Bearing:	6205	Brushes:	18044-4
Brush Qty.:			



15209



NOTE:
 MATERIAL .005 MINIMUM FULL HARD ALUMINUM DULL FINISH.
 TEMP. RANGE -20°C TO +125°C MAXIMUM.
 FOR INDOOR AND OUTDOOR MOUNTING BACK.
 METAL, PRESSURE SENSITIVE BACK. MUST MEET CSA STANDARD.
 THE CSA IDENTIFYING MARK OF THE LABEL MANUFACTURER MUST APPEAR IN THE UPPER RIGHT HAND CORNER AS INDICATED.

MATL: NOTED			
REV: G	CHANGE ALL "NAMEPLATE" TEXT TO "LABEL"		
60291	SCALE: -	BY: BKW	REVISED: 02/19/97
	FILE: CHB00002485	TDR: 0115147	

BALDOR ELECTRIC Co.

LABEL, CONNECTIONS AND TERMINAL MARKINGS DC

15209


REL. S. O.	FRAME	RATING	RPM	ARM. VOLTS	ARM. AMPS
	1810	7.50HP	1750	240	27.8
WINDING TYPE		S.F.	ENCL.	AMB °C/INSUL	DUTY
STRAIGHT SHUNT		1.0	DRG	40/F	CONT
					240
POWER CODE	TYPE	WK 2 (LB-FT ²)	HOT ARM. CIR. RES.	FLD. AMPS@25 °C	HOT FIELD RES
D	T	.9565	.651	.751	417

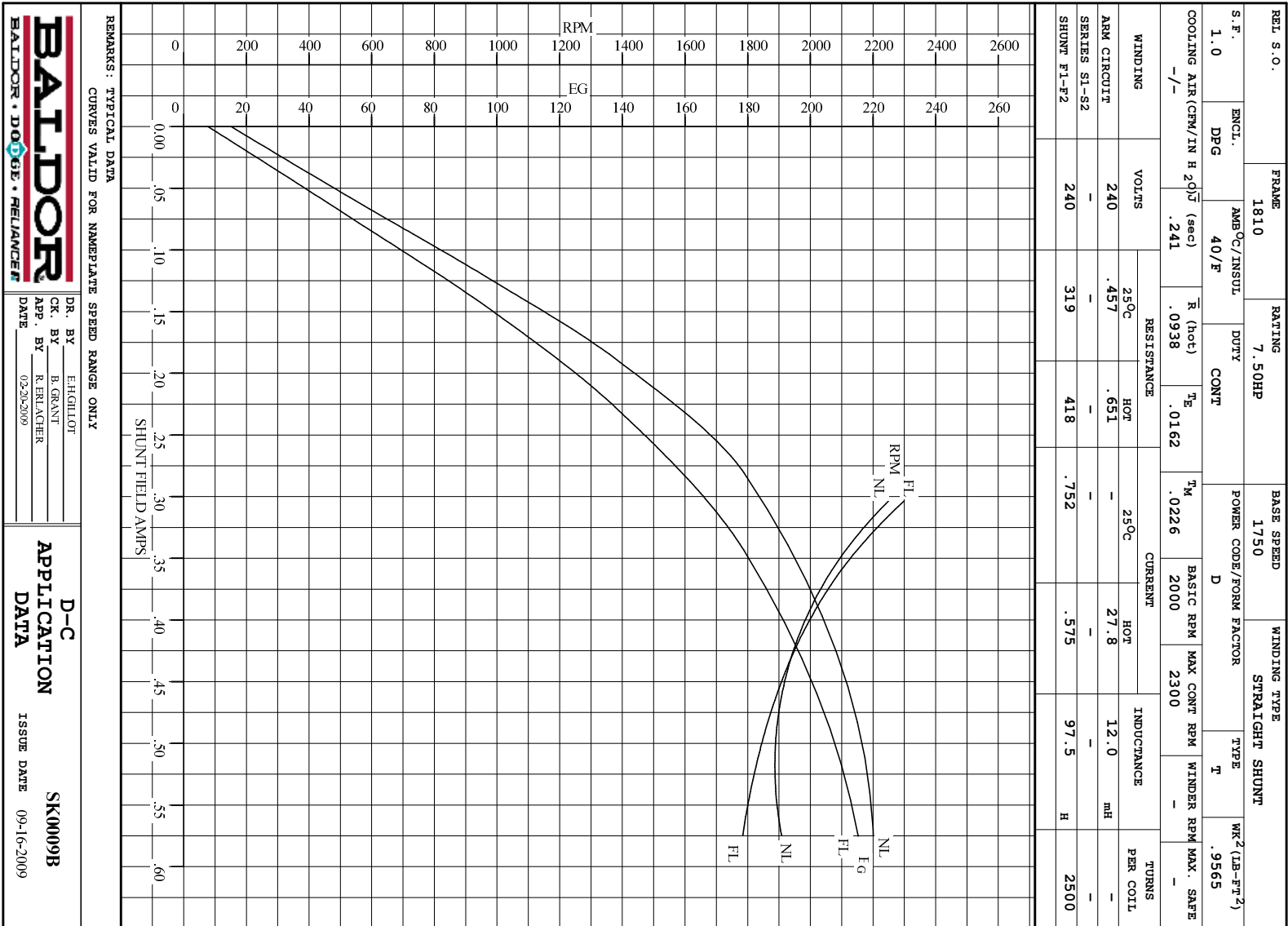
ARM. CIR. IND. (mh)	FIELD IND. (H)	COOLING AIR (CFM/IN H 20)	TURNS PER COIL SHUNT/SERIES	TEST DATE
12.0	97.5	-/-	2500/.00000	-

LOAD PERFORMANCE					
LOAD	AMPERES	TORQUE IN LB.-FT.	OUTPUT IN HP	RPM	% EFFICIENCY
NO LOAD	.80	0	0	1898	0
1/4	7.0	5.38	1.93	1880	77.9
2/4	14	11.4	4.01	1844	84.9
3/4	21	17.2	5.99	1826	86.0
4/4	28	22.8	7.87	1812	85.6
O.L.	42	33.1	11.3	1796	82.9

RPM VS. FIELD AMPS			Eg VS. FIELD AMPS		
FIELD AMPS	RPM N.L.	RPM F.L.	Eg N.L. @ BASE SPEED	Eg F.L. @ BASE SPEED	
.574	1898	1812	220	215	
.506	1888	1837	217	208	
.439	1928	1925	211	199	
.371	2041	2066	201	185	
.303	2249	2300	185	166	

REMARKS: TYPICAL DATA

	DR. BY E. H. GILLIOT	D-C MOTOR PERFORMANCE DATA DK0009B ISSUE DATE 09-16-2009
	CK. BY B. GERANT APP. BY R. ERLACHER DATE 02-20-2009	

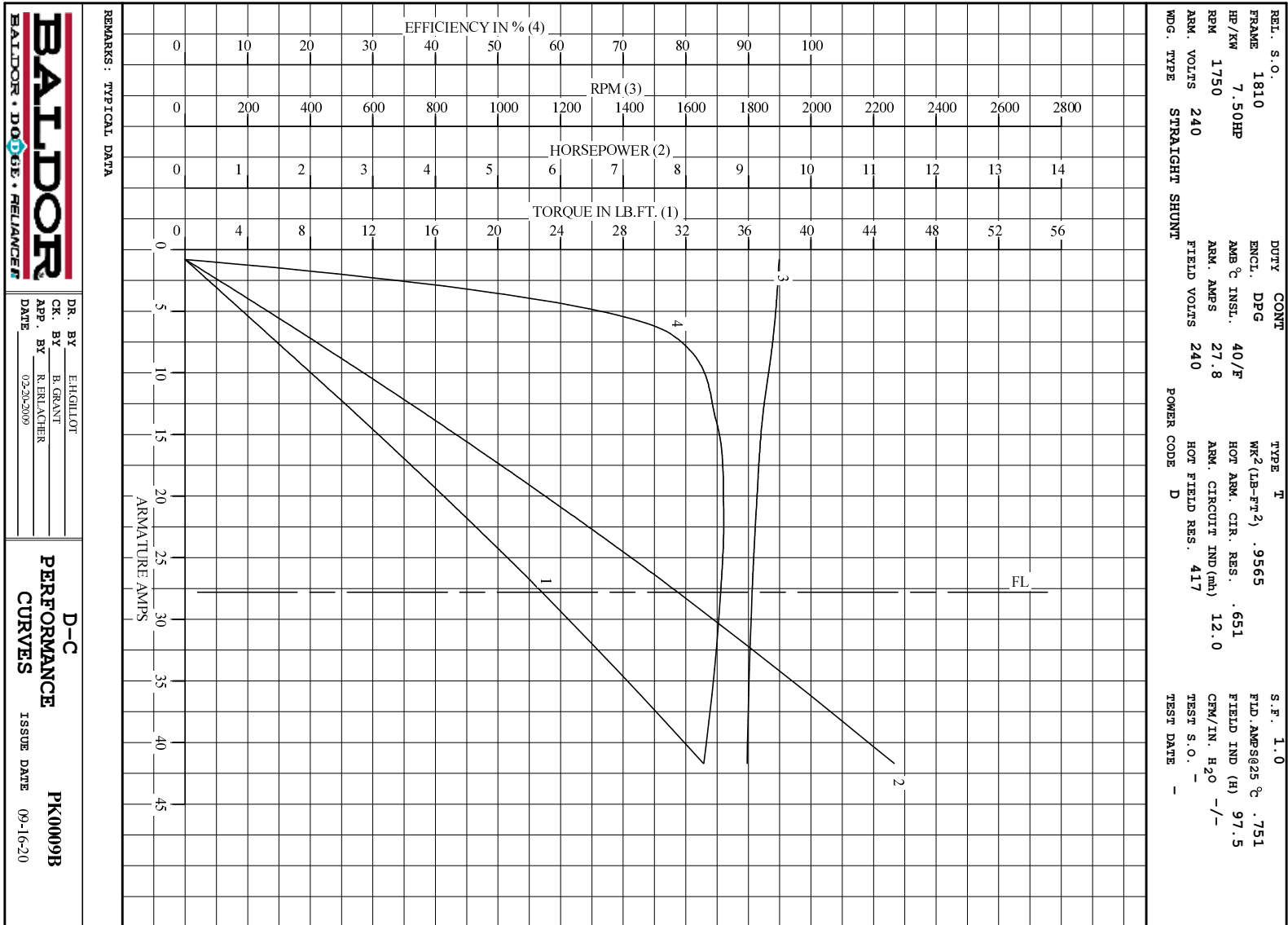


BALDOR
BALDOR • DOUG • RELIANCE

DR. BY E.H.GILLOT
CK. BY B.GRANT
APP. BY R.RELAGHER
DATE 02/20/09

D-C APPLICATION DATA

SK0009B
ISSUE DATE 09-16-2009



DR. BY E.H.GILLOT
 CK. BY B.GRANT
 APP. BY R.RELIACHER
 DATE 02/20/09

D-C
PERFORMANCE
CURVES ISSUE DATE 09-16-20
PK0009B