

BALDOR® • **RELIANCE**

Product Information Packet

CD2010P-2

10HP/1750-2300RPM/DC/NEMA 219ATC

Copyright © All product information within this document is subject to Baldor Electric Company copyright © protection, unless otherwise noted.

Part Detail			
Type:	DC	Prod. Type:	T
Power Code:	D	Weight:	250
Frame Group:	0219ATC	Mounting Pos.:	F1
HP:	10	Enclosure:	DPFG
RPM:	1750/2300	Wound:	STR. SHUNT
Service Factor:	1.0	Arm V:	240
Arm A:	36.60	Field V:	120/ 240
Field A:	3.60/1.80	Field A Hot:	2.52-1.40/1.26-
Insulation Class:	F	Ambient:	40
Duty:	CONT	DE Bearing:	6207
ODE Bearing:	6207	Brushes:	150986-21-1
Brush Qty.:			

880-1

1/2-13UNC-2B THD X 1.00 DEEP
4-HOLES EQUALLY SPACED
ON A 7.250 DIA. B.C.

3/8-16 UNC-2B THD'S
.88 DEEP IN SHAFT END

1.1245
1.1250
DIA.

STANDARD COMM END
FOR SINGLE SHAFT EXTENSION

8.498
8.500
DIA.

FC
C
AH
N
BV
XN
FN
BS
B
BA
AF
J
E
2E
A
AB
AC
P
45
D
BF
4-HOLES
EQ. SPACED
AF
G
XL
AF
J
G
J
E
2E
A
AB
AC
P
45
D
BF
4-HOLES
EQ. SPACED

1/2-13UNC-2B THD X 1.00 DEEP
4-HOLES EQUALLY SPACED
ON A 7.250 DIA. B.C.

3/8-16 UNC-2B THD'S
.88 DEEP IN SHAFT END

1.1245
1.1250
DIA.

STANDARD COMM END
FOR SINGLE SHAFT EXTENSION

8.498
8.500
DIA.

FC
C
AH
N
BV
XN
FN
BS
B
BA
AF
J
E
2E
A
AB
AC
P
45
D
BF
4-HOLES
EQ. SPACED
AF
G
XL
AF
J
G
J
E
2E
A
AB
AC
P
45
D
BF
4-HOLES
EQ. SPACED

HOLE FOR
'AA' CONDUIT

1-098

FRAME	FOOT MOUNTING										D.E. SHAFT EXTENSION										DRIVE KEY		ACC SHAFT EXTENSION		ACC KEY	
	BA	E	2F	G	H	J	AH	AJ	AK	BB MIN	BC	BD	THREAD BF	DEEP	N	N-W	U	V	W	KEY-SQ.	KEY-LONG	FN	FU	FV	KEY-SQ.	KEY-LONG
218ATC	3.50	4.25	10.00	.50	.406	2.00	2.50	7.250	8.500 ²	.24	.25	8.75	1/2-13	1.00	3.00	2.75	1.375	2.50 ⁴	.25	.312	1.75	2.44	1.125	2.19	.250	2.25
219ATC	3.50	4.25	11.00	.50	.406	2.00	2.50	7.250	8.500 ²	.24	.25	8.75	1/2-13	1.00	3.00	2.75	1.375	2.50 ⁴	.25	.312	1.75	2.44	1.125	2.19	.250	2.25
2110ATC	3.50	4.25	12.50	.50	.406	2.00	2.50	7.250	8.500 ²	.24	.25	8.75	1/2-13	1.00	3.00	2.75	1.375	2.50 ⁴	.25	.312	1.75	2.44	1.125	2.19	.250	2.25
258ATC	4.25	5.00	12.50	.69	.531	2.25	3.00	7.250	8.500 ²	.27	.25	8.75	1/2-13	.97	3.44	3.25	1.625	3.00 ⁴	.19	.375	2.31	3.33	1.375	3.08	.312	3.00
259ATC	4.25	5.00	14.00	.69	.531	2.25	3.00	7.250	8.500 ²	.27	.25	8.75	1/2-13	.97	3.44	3.25	1.625	3.00 ⁴	.19	.375	2.31	3.33	1.375	3.08	.312	3.00
2510ATC	4.25	5.00	16.00	.69	.531	2.25	3.00	7.250	8.500 ²	.27	.25	8.75	1/2-13	.97	3.44	3.25	1.625	3.00 ⁴	.19	.375	2.31	3.33	1.375	3.08	.312	3.00
2513ATC	4.25	5.00	22.00	.69	.531	2.25	3.00	7.250	8.500 ²	.27	.25	8.75	1/2-13	.97	3.44	3.25	1.625	3.00 ⁴	.19	.375	2.31	3.33	1.375	3.08	.312	3.00

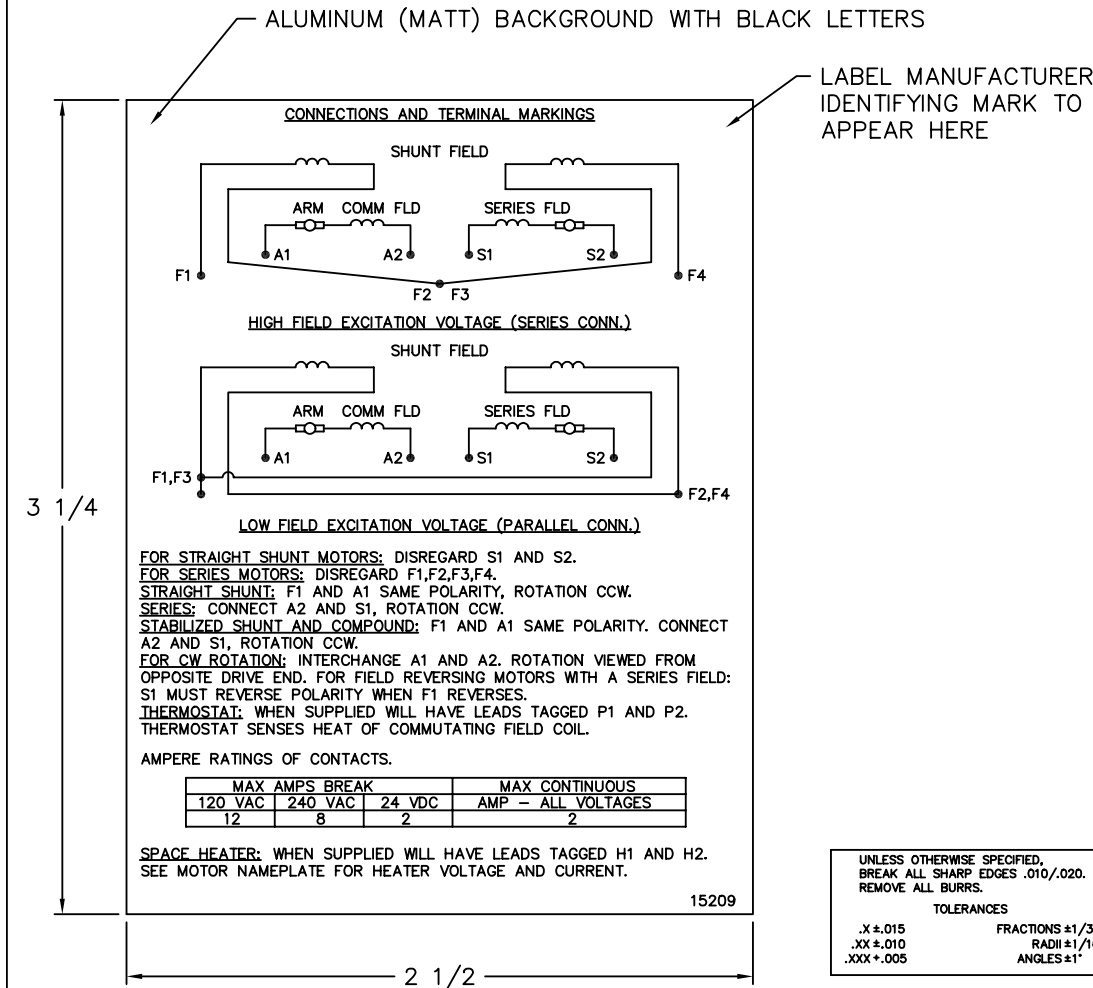
FRAME	FRAME							CONDUIT BOX							ARM APPROX. WK ³ LBS.FT. ²	APPROXIMATE WEIGHT	
	A	B	C	FC	D	O	P	AA	AB	AC	AF	BS	BV	XL			XN
218ATC	10.38	11.00	24.25	25.93	5.25 ³	10.47	10.44	3/4-1	7.91	6.44	2.44	8.38	12.13	3.81	3.12	1.35	245
219ATC	10.38	12.00	25.25	26.93	5.25 ³	10.47	10.44	3/4-1	7.91	6.44	2.44	9.38	13.13	3.81	3.12	1.49	263
2110ATC	10.38	13.50	26.75	28.43	5.25 ³	10.47	10.44	3/4-1	7.91	6.44	2.44	10.88	14.63	3.81	3.12	1.71	291
258ATC	12.38	14.00	27.25	29.84	6.25 ³	12.47	12.44	1 1/4	9.35	7.72	2.94	9.75	14.25	4.94	4.00	2.91	377
259ATC	12.38	15.50	28.75	31.34	6.25 ³	12.47	12.44	1 1/4	9.35	7.72	2.94	11.25	15.75	4.94	4.00	3.31	422
2510ATC	12.38	17.56	30.75	33.34	6.25 ³	12.47	12.44	1 1/4	9.35	7.72	2.94	13.25	17.75	4.94	4.00	3.80	482
2513ATC	12.38	23.50	36.75	39.34	6.25 ³	12.47	12.44	1 1/4	9.35	7.72	2.94	19.25	19.75	4.94	4.00	5.27	531

1) SHAFT DIAMETERS TO 1.500 TOLERANCE +.000 - .0005
SHAFT DIAMETERS ABOVE 1.500 TOLERANCE +.000 - .0010
SHAFT DIAMETERS TO 1.625 RUNOUT .002 T.I.R. MAX.
2) SHAFT DIAMETERS ABOVE 1.625 RUNOUT .003 T.I.R. MAX.
CONCENTRIC WITH SHAFT .004 T.I.R. MAX.
FACE RUNOUT WITH SHAFT .004 T.I.R. MAX.
3) "AK" DIMENSION UNDER 12.000 - DIAMETER TOLERANCE +.000 - .003
CONCENTRIC WITH SHAFT .004 T.I.R. MAX.
FACE RUNOUT WITH SHAFT .004 T.I.R. MAX.
4) "AK" DIMENSION 12.0 & OVER - DIAMETER TOLERANCE +.000 - .005
CONCENTRIC WITH SHAFT .007 T.I.R. MAX.
FACE RUNOUT WITH SHAFT .007 T.I.R. MAX.
5) "O" DIMENSION TOLERANCE +.000 - .000
6) "V" DIMENSION IS MAX. HUB LENGTH ON SHAFT
7) CONDUIT BOX CAN BE NOTED IN 80 STEPS ON ITS OWN AXES
8) ALL DIMENSIONS NOT NOTED ARE NOMINAL DIMENSIONS CONSULT
FACTORY FOR TOLERANCES.

CUSTOMER IS RESPONSIBLE FOR DETERMINING THAT BALDOR'S PRODUCT WILL PERFORM SUITABLY IN THE INTENDED APPLICATION.

REV. DESC: REV. "D" DIM TO +.000 - .060 ONLY	BALDOR	
REV. LTR: B	VERSION: 01	TDR: 00000752566
FILE: \RGG\00019\509	REVISED: 10:47:40 06/20/2012	BY: RGNAS
MTL: -	DIM SHEET SH 1 of 1	

15209



NOTE:
 MATERIAL .005 MINIMUM FULL HARD ALUMINUM DULL FINISH.
 TEMP. RANGE -20°C TO +125°C MAXIMUM.
 FOR INDOOR AND OUTDOOR MOUNTING BACK.
 METAL, PRESSURE SENSITIVE BACK. MUST MEET CSA STANDARD.
 THE CSA IDENTIFYING MARK OF THE LABEL MANUFACTURER MUST APPEAR IN THE UPPER RIGHT HAND CORNER AS INDICATED.

MATL: NOTED			
REV:	G	CHANGE ALL "NAMEPLATE" TEXT TO "LABEL"	
60291	SCALE: -	BY: BKW	REVISED: 02/19/97
	FILE: CHB00002485	TDR: 0115147	

BALDOR ELECTRIC Co.

LABEL, CONNECTIONS AND TERMINAL MARKINGS DC

15209


REL S.O.	FRAME	RATING	RPM	ARM. VOLTS	ARM. AMPS
	219AT	10.0HP	1750	240	36.6
WINDING TYPE		S.F.	ENCL.	AMB °C/INSUL	DUTY
STRAIGHT SHUNT		1.0	DRG	40/F	CONT
					240
POWER CODE	TYPE	WK 2 (LB-FT ²)	HOT ARM.CIR.RES.	FLD. AMPS@25 °C	HOT FIELD RES
D	T	1.201	.660	1.80	189

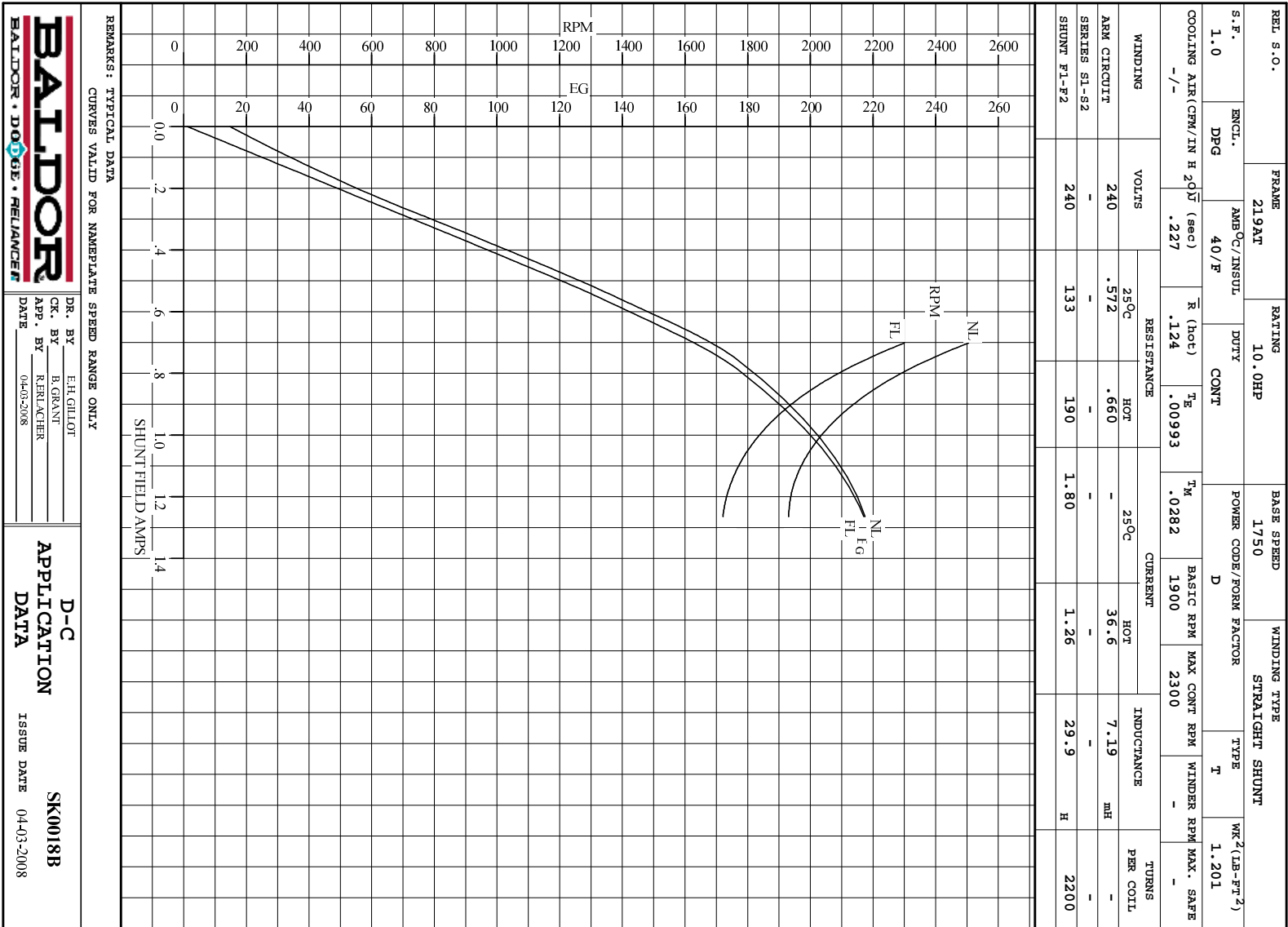
ARM. CIR. IND. (mh)	FIELD IND. (H)	COOLING AIR(CFM/IN H 20)	TURNS PER COIL SHUNT/SERIES	TEST DATE
7.18	29.9	-/-	2200/.00000	-

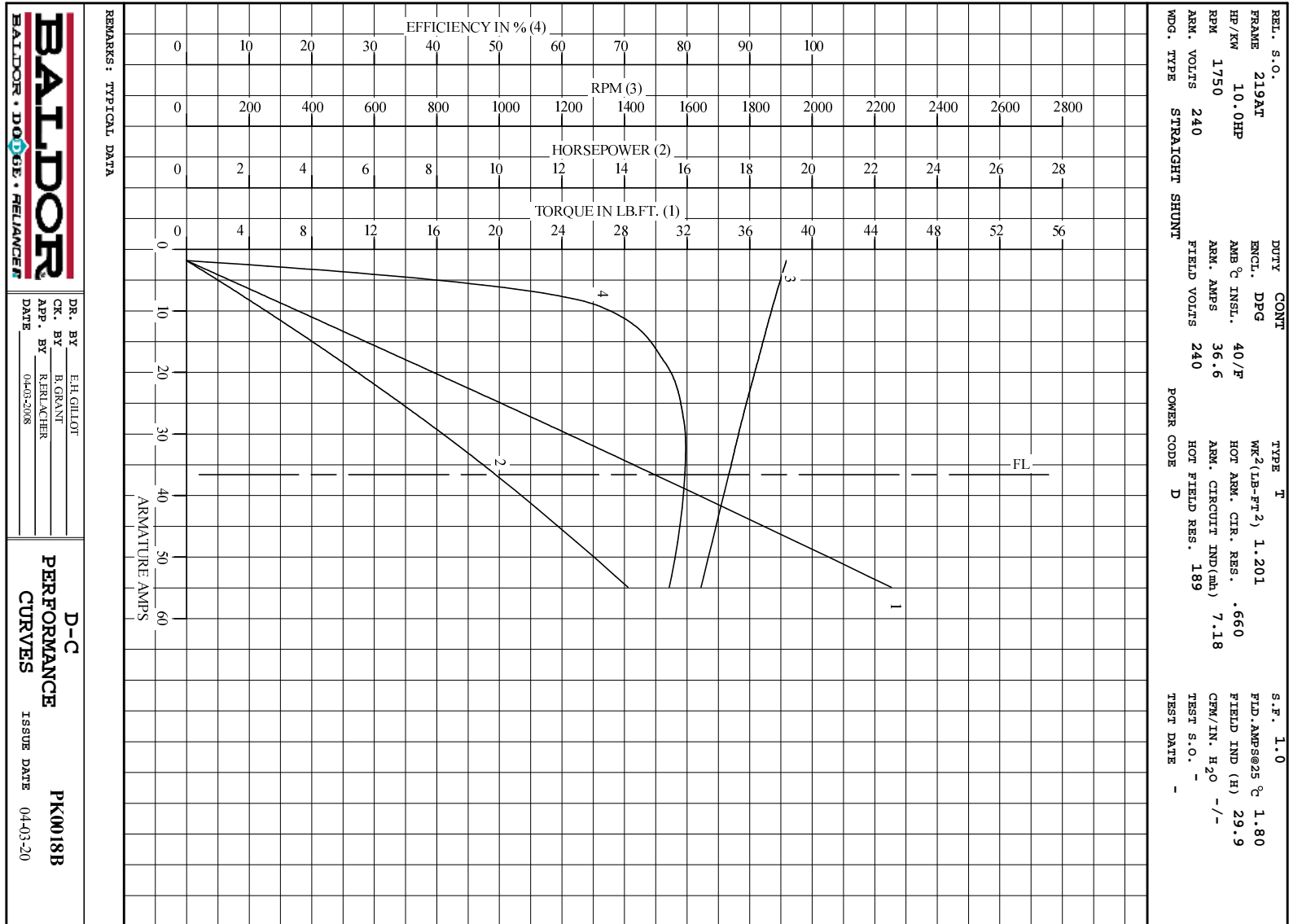
LOAD PERFORMANCE					
LOAD	AMPERES	TORQUE IN LB.-FT.	OUTPUT IN HP	RPM	% EFFICIENCY
NO LOAD	1.8	0	0	1917	0
1/4	9.2	6.38	2.28	1874	65.7
2/4	18	14.3	4.98	1826	76.4
3/4	27	22.2	7.51	1777	79.4
4/4	37	29.9	9.88	1733	79.6
O.L.	55	45.1	14.1	1645	77.2

RPM VS. FIELD AMPS			Eg VS. FIELD AMPS	
FIELD AMPS	RPM N.L.	RPM F.L.	Eg N.L. @ BASE SPEED	Eg F.L. @ BASE SPEED
1.26	1917	1733	217	217
1.12	1959	1759	214	212
.983	2050	1851	205	201
.842	2218	2019	189	185
.701	2504	2300	167	162

REMARKS: TYPICAL DATA

	DR. BY E. H. GILLOT	D-C MOTOR PERFORMANCE DATA DK0018B ISSUE DATE 04-03-2008
	CK. BY B. GRANT APP. BY R. RELANCHER DATE 04-03-2008	





DR. BY E.H.GILLOT
 CK. BY B.GRAVITT
 APP. BY R.FERLACHER
 DATE 04-03-2008

D-C
PERFORMANCE
CURVES ISSUE DATE 04-03-20
PK0018B