

# **BALDOR® • RELIANCE**

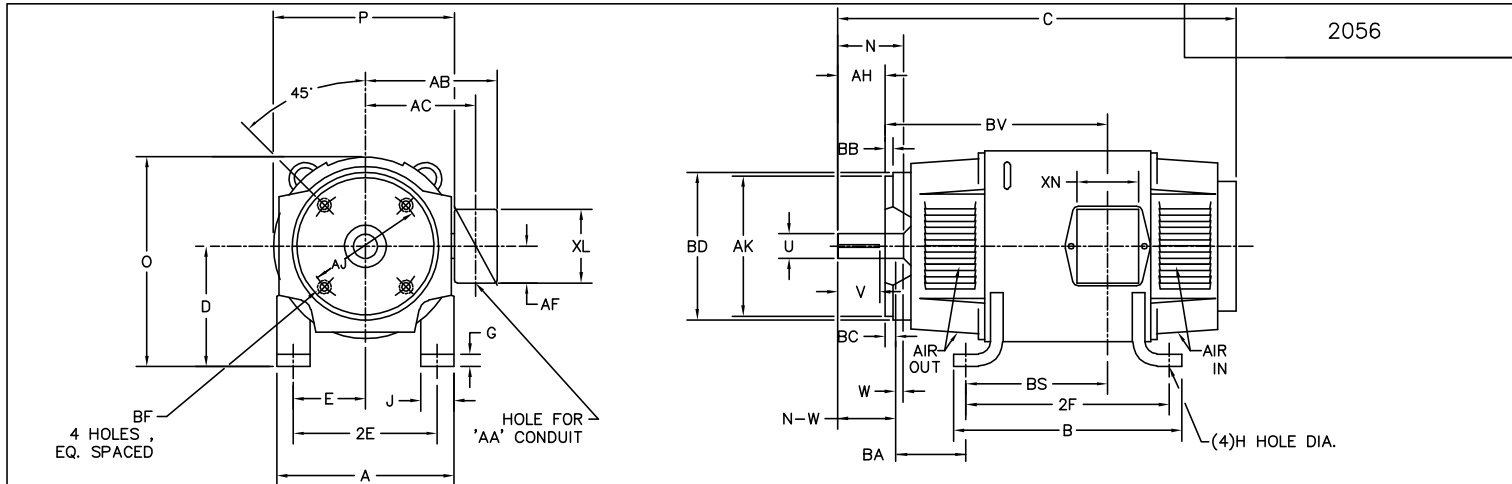
## **Product Information Packet**

# **CDMG2320**

**20KW,1750RPM,DC,288ATC,DPFG,F2**

Copyright © All product information within this document is subject to Baldor Electric Company copyright © protection, unless otherwise noted.

Part Detail			
Type:	DC	Prod. Type:	T
Power Code:	A	Weight:	780
Frame Group:	0288AT	Mounting Pos.:	F2
HP:	20	Enclosure:	DPFG
RPM:	1750	Wound:	COMPOUND
Service Factor:	1.0	Arm V:	230
Arm A:	87.00	Field V:	230
Field A:	2.93	Field A Hot:	1.80
Insulation Class:	F	Ambient:	40
Duty:	CONT	DE Bearing:	6210
ODE Bearing:	6209	Brushes:	28610-1
Brush Qty.:			



FRAME	FOOT MOUNTING							D.E. SHAFT EXTENSION										DRIVE KEY		FRAME							
	BA	E	2F	G	H	J	AH	AJ	AK	BB MIN.	BC	BD	THREAD	BF DEEP	N	N-W	U	V	W	KEY-SQ.	KEY-LONG	A	B	C	D	O	P
1810ATC	2.75	3.75	11.00	.38	.406	1.50	2.125	7.250	8.500	.16	—	8.69	1/2-13	.75	2.90	2.77	1.125 <sup>1</sup>	2.13 <sup>4</sup>	.13	.250	1.38	8.81	12.25	21.46	4.50 <sup>3</sup>	9.00	9.00
219ATC	3.50	4.25	11.00	.50	.406	2.00	2.50	7.250	8.500	.24	.25	8.75	1/2-13	1.00	3.00	2.75	1.375 <sup>1</sup>	2.50 <sup>4</sup>	.25	.312	1.75	10.38	12.00	24.50	5.25 <sup>3</sup>	10.47	10.44
258ATC	4.25	5.00	12.50	.69	.531	2.25	3.00	7.250	8.500	.27	.25	8.75	1/2-13	.97	3.44	3.25	1.625 <sup>1</sup>	3.00 <sup>4</sup>	.19	.375	2.31	12.38	14.00	26.50	6.25 <sup>3</sup>	12.47	12.44
259ATC	4.25	5.00	14.00	.69	.531	2.25	3.00	7.250	8.500	.27	.25	8.75	1/2-13	.97	3.44	3.25	1.625 <sup>1</sup>	3.00 <sup>4</sup>	.19	.375	2.31	12.38	15.50	28.00	6.25 <sup>3</sup>	12.47	12.44
288ATC	4.75	5.50	14.00	.69	.531	2.50	3.50	9.000	10.500	.25	.25	10.75	1/2-13	.75	3.91	3.75	1.875 <sup>1</sup>	3.50 <sup>4</sup>	.16	.500	2.50	13.81	15.62	32.00	7.00 <sup>3</sup>	13.88	13.75
328ATC	5.25	6.25	16.00	.81	.656	3.00	4.00	11.000	12.500	.25	.25	13.02	5/8-11	.88	4.40	4.25	2.125 <sup>1</sup>	4.00 <sup>4</sup>	.15	.500	3.12	15.88	17.75	34.63	8.00 <sup>3</sup>	15.94	15.88
329ATC	5.25	6.25	18.00	.81	.656	3.00	4.00	11.000	12.500	.25	.25	13.02	5/8-11	.88	4.40	4.25	2.125 <sup>1</sup>	4.00 <sup>4</sup>	.15	.500	3.12	15.88	19.75	36.63	8.00 <sup>3</sup>	15.94	15.88
3212ATC	5.25	6.25	25.00	.81	.656	3.00	4.00	11.000	12.500	.25	.25	13.02	5/8-11	1.12	4.40	4.25	2.125 <sup>1</sup>	4.00 <sup>4</sup>	.15	.500	3.12	15.88	26.75	43.63	8.00 <sup>3</sup>	15.94	15.88

FRAME	CONDUIT BOX							APPROXIMATE WEIGHT	
	AA	AB	AC	AF	BS	BV	XL		
1810ATC	3/4NPT	INTEGRAL WITH ENDPLATE						200	
219ATC	3/4-1	7.91	6.44	2.44	9.38	13.13	3.81	3.12	263
258ATC	1 1/4	9.35	7.72	2.94	9.75	14.25	4.94	4.00	377
259ATC	1 1/4	9.35	7.72	2.94	11.25	15.75	4.94	4.00	422
288ATC	1 1/4	11.88	9.25	5.00	12.64	17.64	7.88	5.25	579
328ATC	2	12.94	10.32	5.00	13.68	19.18	7.88	5.25	800
329ATC	2	12.94	10.32	5.00	15.68	21.18	7.88	5.25	904
3212ATC	2	12.94	10.32	5.00	22.68	28.18	7.88	5.25	937

- SHAFT DIAMETERS TO 1.500 TOLERANCE +.000 -.0005  
SHAFT DIAMETERS ABOVE 1.500 TOLERANCE +.000 -.0010  
SHAFT DIAMETERS TO 1.625 RUNOUT .002 T.I.R. MAX.  
SHAFT DIAMETERS ABOVE 1.625 RUNOUT .003 T.I.R. MAX.
- 'AK' DIMENSION UNDER 12.000 - DIAMETER TOLERANCE + .000 - .003  
CONCENTRIC WITH SHAFT .004 T.I.R. MAX.  
FACE RUNOUT WITHSHAFT .004 T.I.R. MAX.  
'AK' DIMENSION 12.0 & OVER - DIAMETER TOLERANCE +.000 -.005  
CONCENTRIC WITH SHAFT .007 T.I.R. MAX.  
FACE RUNOUT WITH SHAFT .007 T.I.R. MAX.
- 'D' DIMENSION TOLERANCE +.000 -.060
- 'V' DIMENSION IS MAX. HUB LENGTH ON SHAFT
- CONDUIT BOX CAN BE ROTATED IN 90° STEPS ON ITS OWN AXIS.
- ALL DIMENSIONS NOT NOTED ARE NOMINAL DIMENSIONS CONSULT FACTORY FOR TOLERANCES.

CUSTOMER IS RESPONSIBLE FOR DETERMINING THAT BALDOR'S PRODUCT WILL PERFORM SUITABLY IN THE INTENDED APPLICATION.

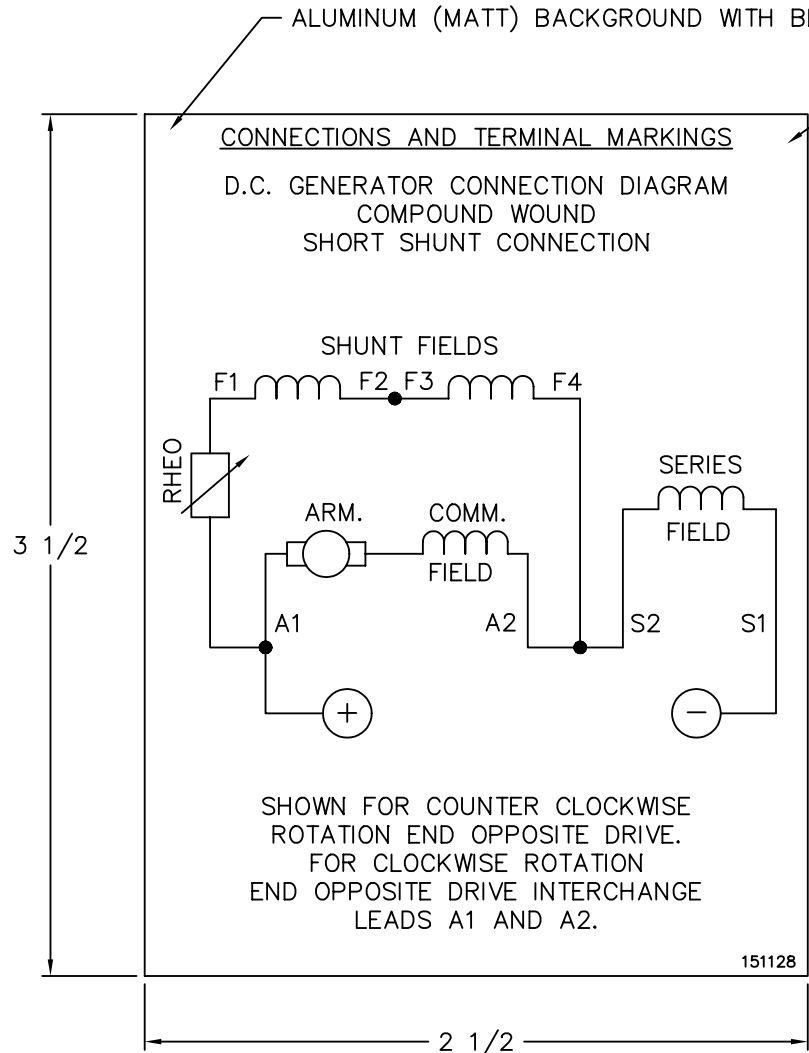
REV. DESC: REV. "D" DIM NEGATIVE TOL. FROM -.030 TO -.060	TDR: 000000738871
REV. LTR: E	VERSION: 05
FILE: \RGG\00018\330	REVISED: 03:01:26 03/19/2012
MTL: -	BY: RGGNAS

**BALDOR**

DIM SHEET,1810ATC THRU 3212ATC GENERATORS,F2 MTG  
SH 1 of 1

2056

151128



LABEL MANUFACTURER IDENTIFYING MARK TO APPEAR HERE

**NOTE:**  
MATERIAL .005 MINIMUM FULL HARD ALUMINUM DULL FINISH.  
TEMP. RANGE -20°C TO +125°C MAXIMUM.  
FOR INDOOR AND OUTDOOR MOUNTING BACK.  
METAL, PRESSURE SENSITIVE BACK. MUST MEET CSA STANDARD.  
THE CSA IDENTIFYING MARK OF THE LABEL MANUFACTURER MUST APPEAR IN THE UPPER RIGHT HAND CORNER AS INDICATED.

UNLESS OTHERWISE SPECIFIED,  
BREAK ALL SHARP EDGES .010/.020.  
REMOVE ALL BURRS.

TOLERANCES

.X ±.015	FRACTIONS ±1/32
.XX ±.010	RADII ±1/16
.XXX ±.005	ANGLES ±1°

151128

MATL: NOTED			
REV:	A	CHANGE ALL "NAMEPLATE" TEXT TO "LABEL"	
8Z1191	SCALE: -	BY: BKW	REVISED: 02/19/97
	FILE: CHB00003088	TDR: 0115147	

**BALDOR ELECTRIC Co.**

LABEL, CONNECTIONS AND TERMINAL MARKINGS DC GENERATORS

REL S.O.	FRAME	RATING	RPM	ARM. VOLTS	ARM. AMPS
	288	20.0HP	1750	230	87.0
WINDING TYPE		S.F.	ENCL.	AMB °C/INSUL	DUTY
STAB. SHUNT		1.0	DBG	40/F	CONT
					230
POWER CODE	TYPE	WK 2 (LB-FT <sup>2</sup> )	HOT ARM. CIR. RES.	FLD. AMPS@25 °C	HOT FIELD RES
A	T	4.420	.244	2.93	127

ARM. CIR. IND. (mh)	FIELD IND. (H)	COOLING AIR (CFM/IN H 20)	TURNS PER COIL SHUNT/SERIES	TEST DATE
3.10	30.7	-/-	2000/9	-

LOAD PERFORMANCE


LOAD	AMPERES	TORQUE IN OZ.-FT.	OUTPUT IN HP	RPM	% EFFICIENCY
NO LOAD	296	0	0	2571	0
1/4	22	0	0	2430	0
2/4	44	0	0	2286	0
3/4	65	0	0	2161	0
4/4	87	0	0	2058	0
O.L.	131	0	0	1892	0

RPM VS. FIELD AMPS

Eg VS. FIELD AMPS

FIELD AMPS	RPM N.L.	RPM F.L.	Eg N.L. @ BASE SPEED	Eg F.L. @ BASE SPEED
1.80	2570	2057	154	149
2.04	2430	2336	166	166
2.28	2312	2206	176	181
2.52	2233	2117	186	194
2.76	2570	2057	154	149

REMARKS: TYPICAL DATA

	DR. BY E. GILLIOT	<b>D-C MOTOR PERFORMANCE DATA</b> DK0076A ISSUE DATE 05-06-09
	CK. BY B. GRANT APP. BY R. BRANCHER DATE 05-06-09	