

# **BALDOR**® • ***RELIANCE***

## **Product Information Packet**

# **CDPWD3575**

**1.5HP,1750RPM,DC,145TC,3536P,TEFC,F1**

Copyright © All product information within this document is subject to Baldor Electric Company copyright © protection, unless otherwise noted.

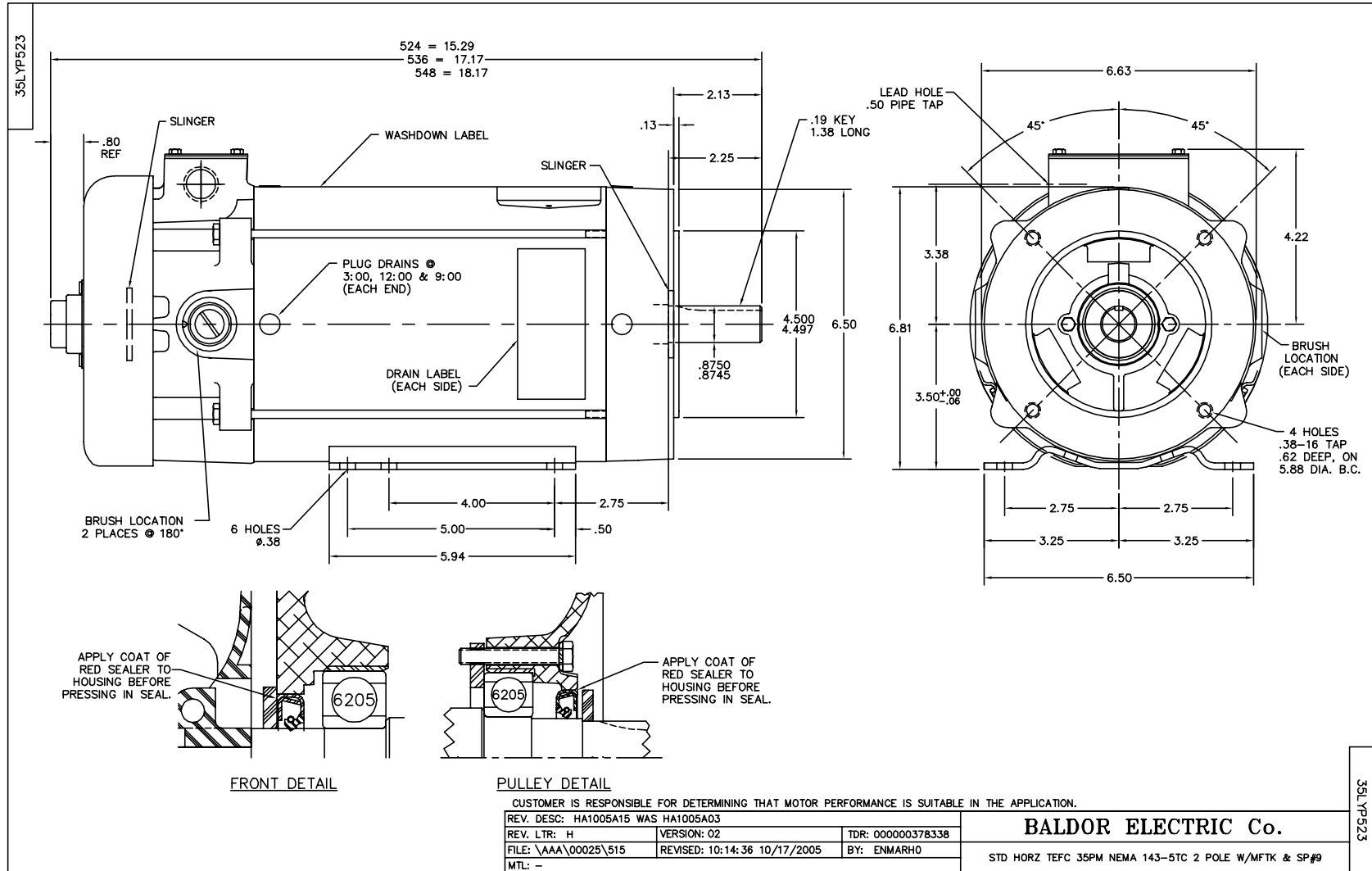
Part Detail							
Revision:	AC	Status:	PRD/A	Change #:		Proprietary:	No
Type:	DC	Prod. Type:		Elec. Spec:	35WGZ164	CD Diagram:	
Enclosure:	TEFC	Mfg Plant:		Mech. Spec:	35P523	Layout:	
Frame:	145TC	Mounting:	F1	Poles:	///	Created Date:	
Base:	RG	Rotation:	RS	Insulation:	F	Eff. Date:	09-24-2012
Field Type:		Literature:		Elec. Diagram:		Replaced By:	

**Nameplate NP1509**

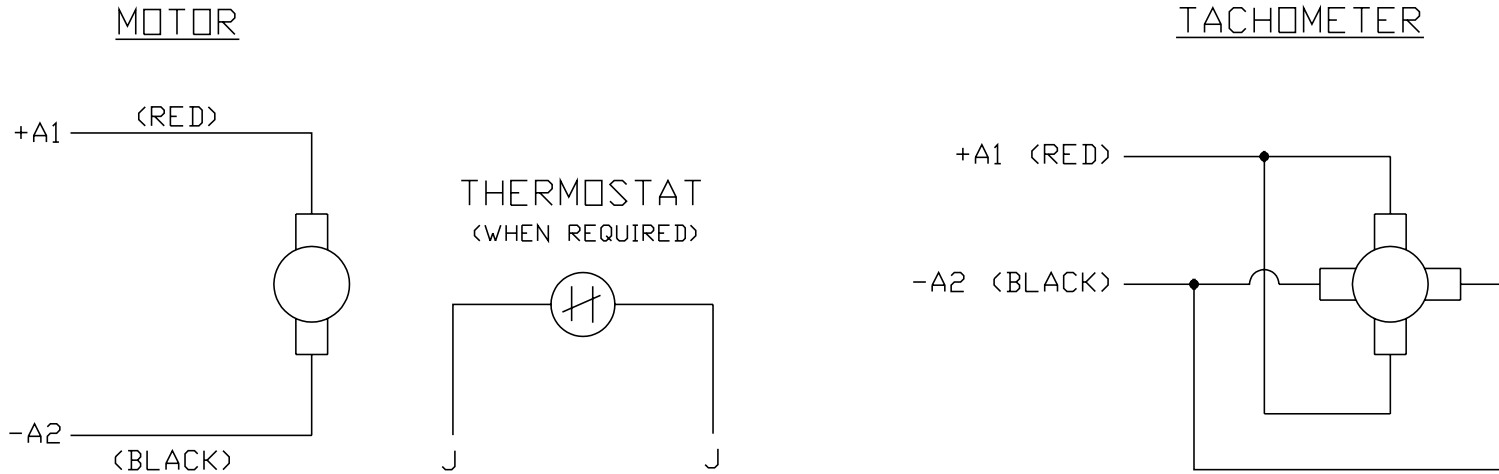
CAT.NO.	CDPWD3575						
SPEC.	35P523Z164						
HP	1.5	ENCL			TEFC		
RPM	1750						
FRAME	145TC	TYPE			3536P		
ARM V	180	ARM A			7.7		
FLD V		FLD A					
INSUL	F	AMB.			40		
DUTY	CONT	SUPPLY			K		
BRG/DE	6205	BRG/ODE			6205		
BRUSHES	2/BP5000T15						
	BLANK						
SER.							
BLANK							
APRV-CSA	APRV-UL			APRV-CE			

Parts List		
Part Number	Description	Quantity
SA005547	SA 35P523Z164	1.000 EA
AA003196	AA 35P523Z164	1.000 EA
BP5000T15SP	CARBON BRUSH-35P,180VOLTS	1.000 EA
11XW1032G06	10-32 X .38, TAPTITE II, HEX WSHR SLTD U	1.000 EA
HW3001B01	003SS CUP WASHER, FOR #8 SCREW	1.000 EA
HW4600B49SP	SEAL 0.938 X 1.624 X 0.250 SINGLE LIP DB	1.000 EA
HA1005A03SP	SLINGER, OD 1.750, ID .938, 205 BRG	1.000 EA
HW5100A05	WVY WSHR F/205 & 304 BRGS	1.000 EA
HW4600B49SP	SEAL 0.938 X 1.624 X 0.250 SINGLE LIP DB	1.000 EA
HA1005A15	SLINGER,.860 ID X 1.625 OD X .125 THICK	1.000 EA
12XN1032S20	10-32 X 1-1/4 HEX M.S. , STAINLESS STEEL	2.000 EA
BP5201A18	BRUSH HOLDER - WITHOUT CAP & CONN.	2.000 EA
BP4543A01	BRUSH HOLDER CAP, AE-74-SO W/O'RING	2.000 EA
BP3000A02SP	AMP LEAD CLIP #60812-2 SPL	1.000 EA
80XN1032A03	10-32 X 3/16 SET SCREW	2.000 EA
MJ5004A05	#242-21 LOCTITE GENERAL PURPOSE MED. STR	0.001 EA
35FN3002A05SP	EXFN, PLASTIC, 6.376 OD, .638 ID	1.000 EA
51XB1214A16	12-14X1.00 HXWSSLD SERTYB	1.000 EA
11XW1032S06	10-32 X .38, TAPTITE II, HEX WSHR SLTD U	3.000 EA
WD4102A01	SR-6L-1 HEYCO STRN RELIEF OR 23MPO6L10 M	1.000 EA
WD4100A17	PLUG STIMPSON D4036	1.000 EA
35GS1010A01	GASKET, CONDUIT BOX LID TDR 11640	1.000 EA
59XW0832S07	TAPTITE II,HEX WSHR UNSLTD SER,410 S.S.,	2.000 EA
HW2502D13	SS KEY, 3/16 SQ X 1.375	1.000 EA

Parts List (continued)		
Part Number	Description	Quantity
HA7000A01	KEY RETAINER 7/8" DIA SHAFT	1.000 EA
LB1164	LABEL,WARNING AND DRAIN	1.000 EA
35EP3110A14W	FR EP TEFC 35PM W/WHITE POWDER COAT PAIN	1.000 EA
35EP3301A05W	PU E.P. ENCL, 56C 35PM-205 BRG W/WHITE P	1.000 EA
35FH5001A10WP	DRIP COVER ASS'Y TEFC HOR,EP0XY PRIMER P	1.000 EA
35CB4506W	CONDUIT BOX LID, STAMPED W/WHITE POWDER	1.000 EA
MJ5001A01	46-665 RED SEALER	0.001 QT
MG1025W01	PAINT- 781-01 WILKOFASST WHITE EPOXY	0.017 GA
10XF0440S02	04-40 X 1/8 TYPE F HEX HD STAINLESS STIC	2.000 EA
HW4032A01	BLACK DRAIN PLUG FOR WASH DOWN MOTORS	3.000 EA
HW4032A01	BLACK DRAIN PLUG FOR WASH DOWN MOTORS	3.000 EA
HA3101S46	THRUBOLT- 1/4-20 X 10.00 SS	4.000 EA
LB1125C01	STD (STOCK) CARTON LABEL BALDOR WITH FLA	1.000 EA
LB5040	INSTRUCTION TAG, AC & DC	1.000 EA
LC0194	CONNECTION LABEL FOR TYPE PM-DC MOTOR W/	1.000 EA
NP1509	DC, WD, UL CE CSA, W/O THERMAL	1.000 EA
35PA1007	PACKAGING GROUP	1.000 EA



CD0194



NOTES:

1. CCW ROTATION AS SHOWN FACING COMMUTATOR END. TO REVERSE MOTOR ROTATION OR TACHOMETER OUTPUT POLARITY INTERCHANGE LEADS A1(RED) & A2(BLACK)
2. LEAD COLORS FOR REFERENCE ONLY & NOT SPECIFIED BY THIS DRAWING. LEAD COLORS SPECIFIED BY LAYOUT DRAWING & BILL OF MATERIAL ONLY.

MATL: -			
REV: E	ADDED NOTE "LEAD COLORS FOR REFERENCE ONLY &..."		
CD0194	SCALE: -	BY: CK	REVISED: 07/28/95
	FILE: AAA00004503	TDR: 0078737	

**BALDOR ELECTRIC Co.**

CD TYPE P DC PERMANENT MAGNET MOTORS AND TACHOMETERS

CD0194