

# **BALDOR® • RELIANCE**

## **Product Information Packet**

### **CECP3774T**

**10HP, 1760RPM, 3PH, 60HZ, 215TC, 0748M, TEFC, F**

Copyright © All product information within this document is subject to Baldor Electric Company copyright © protection, unless otherwise noted.

| Part Detail       |              |                |       |                |          |               |            |    |   |
|-------------------|--------------|----------------|-------|----------------|----------|---------------|------------|----|---|
| Revision:         | D            | Status:        | PRD/A | Change #:      |          | Proprietary:  | No         |    |   |
| Type:             | AC           | Prod. Type:    | 0748M | Elec. Spec:    | 07WGX776 | CD Diagram:   |            |    |   |
| Enclosure:        | TEFC         | Mfg Plant:     |       | Mech. Spec:    | 07K373   | Layout:       |            |    |   |
| Frame:            | 215TC        | Mounting:      | F1    | Poles:         | 04       | Created Date: | 08-04-2006 |    |   |
| Base:             | RG           | Rotation:      | R     | Insulation:    | F        | Eff. Date:    | 09-22-2011 |    |   |
| Leads:            | 9#14         | Literature:    |       | Elec. Diagram: |          | Replaced By:  |            |    |   |
| Nameplate NP1260E |              |                |       |                |          |               |            |    |   |
| CAT.NO.           | CECP3774T    |                |       |                |          |               |            |    |   |
| SPEC.             | 07K373X776G1 |                |       |                |          |               |            |    |   |
| HP                | 10           |                |       |                |          |               |            |    |   |
| VOLTS             | 230/460      |                |       |                |          |               |            |    |   |
| AMP               | 25/12.5      |                |       |                |          |               |            |    |   |
| RPM               | 1760         |                |       |                |          |               |            |    |   |
| FRAME             | 215TC        | HZ             | 60    |                |          | PH            | 3          |    |   |
| SER.F.            | 1.15         | CODE           | H     |                |          | DES           | A          | CL | F |
| NEMA-NOM-EFF      | 92.4         | PF             | 82    |                |          |               |            |    |   |
| RATING            | 40C AMB-CONT |                |       |                |          |               |            |    |   |
| CC                | 010A         | USABLE AT 208V |       |                |          |               |            |    |   |
| DE                | 6307         | ODE            | 6307  |                |          |               |            |    |   |
| ENCL              | TEFC         | SN             |       |                |          |               |            |    |   |
|                   |              |                |       |                |          |               |            |    |   |

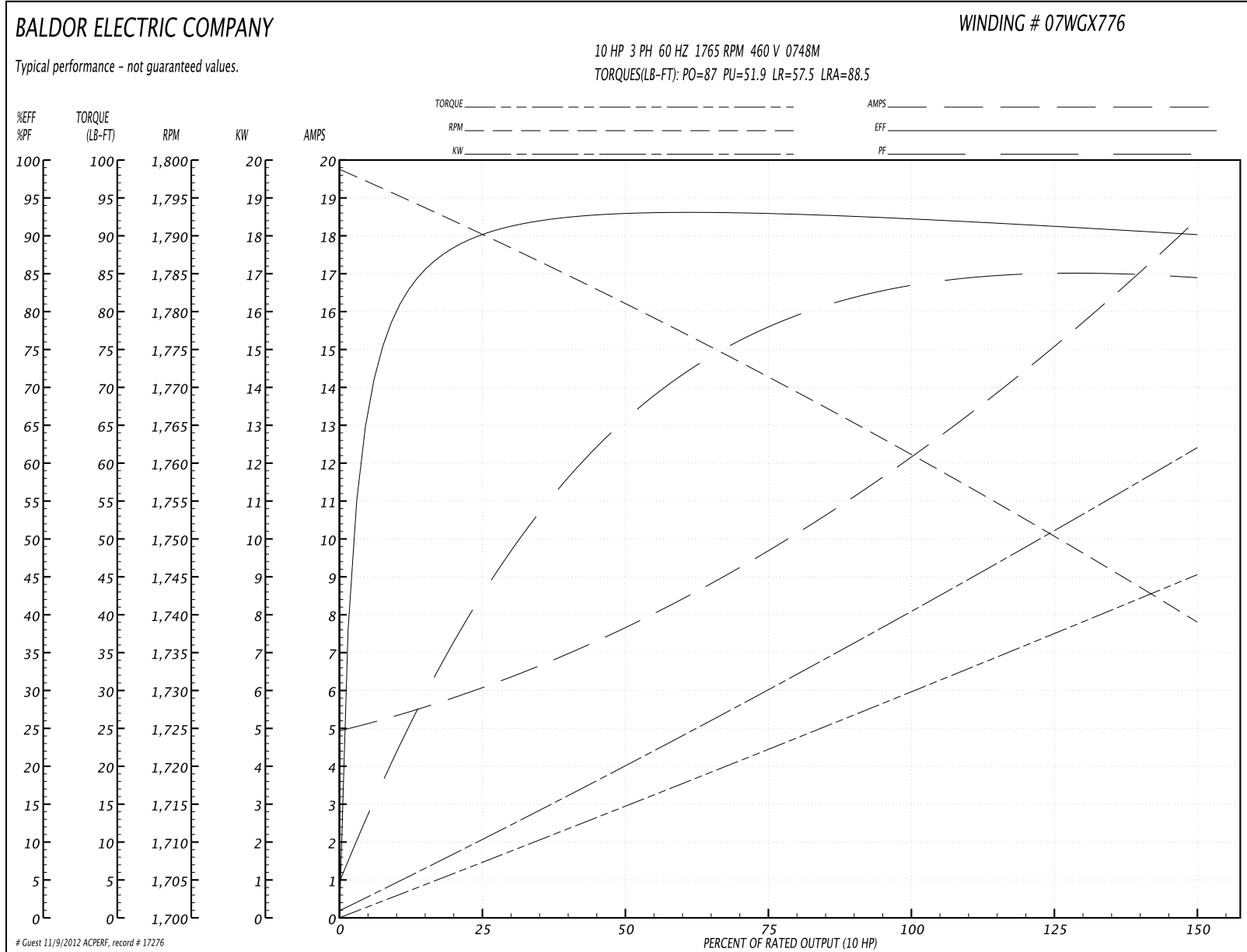
| Parts List     |  |          |
|----------------|--|----------|
| Part Number    | Description                              | Quantity |
| SA147420       | SA 07K373X776G1                          | 1.000 EA |
| RA136468       | RA 07K373X776G1                          | 1.000 EA |
| 37FN3002C01    | EXFN, PLASTIC, 6.00 OD, 1.155 ID         | 1.000 EA |
| S/P107-000-001 | SUPER E PROC'S-FS & WS PLTS-POLYREX EM G | 1.000 EA |
| HW3201A05      | 3/8-16 EYEBOLT                           | 1.000 EA |
| 09CB1001A03G   | CONDUIT BOX, MACH GRAY                   | 1.000 EA |
| RM1017         | LEAD SEPERATOR GASKET MODEL 307 1/8" THK | 1.000 EA |
| 51XW2520A12    | .25-20 X .75, TAPTITE II, HEX WSHR SLTD  | 2.000 EA |
| 11XW1032G06    | 10-32 X .38, TAPTITE II, HEX WSHR SLTD U | 1.000 EA |
| HW3001B01      | 003SS CUP WASHER, FOR #8 SCREW           | 1.000 EA |
| 10XN2520S06    | 1/4 20X3/8 HX HD CAP S.S.                | 2.000 EA |
| WD1000B16      | KPA-4C BURNDY TERMINAL                   | 2.000 EA |
| 37EP1101C43G   | TEFC 307 BRG, GRSR,RELIEF,.25-20 FH TAPS | 1.000 EA |
| HW4500A01      | 1641B(ALEMITE)400 UNIV, GREASE FITT      | 1.000 EA |
| HA4051A00      | PLASTIC CAP FOR GREASE FITTING           | 1.000 EA |
| HW4500A17      | 317400 ALEMITE GREASE RELIEF             | 1.000 EA |
| HA4001A01SP    | DRAIN PLUG, PLASTIC (MICRO PLAS)         | 1.000 EA |
| HW5100A08      | W3118-035 WVY WSHR (WB)                  | 1.000 EA |
| 37EP1300A41G   | FACE MTD E.P. ENCL 307 BRG. 213-5TC S.P. | 1.000 EA |
| HW4500A01      | 1641B(ALEMITE)400 UNIV, GREASE FITT      | 1.000 EA |
| HA4051A00      | PLASTIC CAP FOR GREASE FITTING           | 1.000 EA |
| HW4500A17      | 317400 ALEMITE GREASE RELIEF             | 1.000 EA |
| HA4001A01SP    | DRAIN PLUG, PLASTIC (MICRO PLAS)         | 1.000 EA |
| 10XN2520A30    | HEX HD CAP SCREW-STD THD-.25 X 20 THD PE | 4.000 EA |

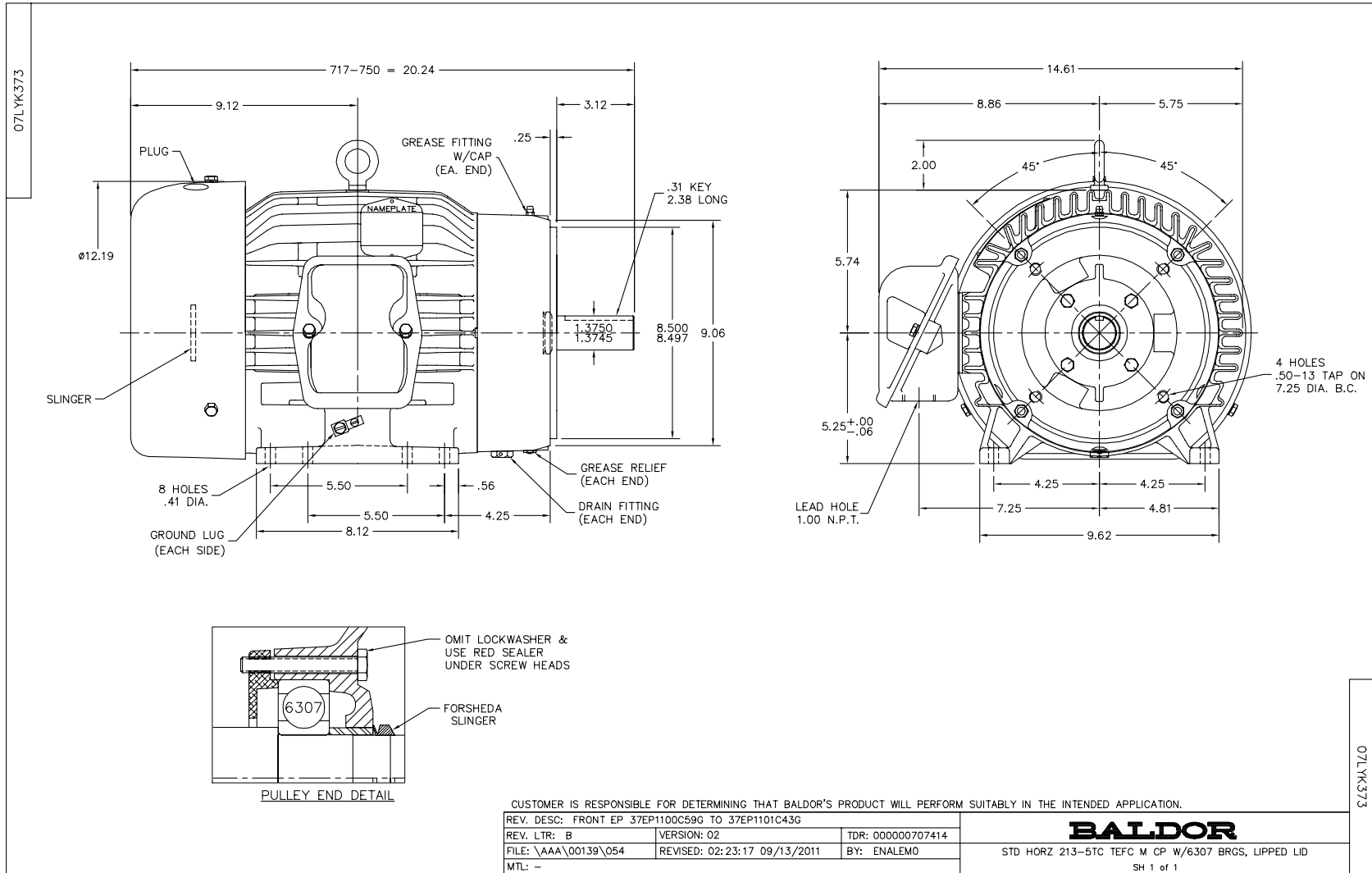
| Parts List (continued) |  |          |
|------------------------|--|----------|
| Part Number            | Description                              | Quantity |
| XY3118A12              | 5/16-18 HEX NUT DIRECTIONAL SERRATION    | 4.000 EA |
| 51XB1214A20            | 12-14X1.25 HXWSSLD SERTYB                | 1.000 EA |
| 07FH1001A01G           | SPL FAN HOUSING, 307, W/GREASER, GRAY EP | 1.000 EA |
| 10XN2520A16            | 1/4-20 X 1 HEX HEAD CAP SCR, ZINC PLATED | 3.000 EA |
| WD4100A02              | DP-1000 HEYCO PLUG OR 62MP1000 MICRO PL  | 1.000 EA |
| 09CB1504A01G           | LIPPED CONDUIT BOX LID, MACH GRAY EPOXY  | 1.000 EA |
| 09GS1001A01SP          | GASKET, BOX LID, 1/8 THICK BLACK NEOPREN | 1.000 EA |
| 10XF2520A12            | 1/4-20 X 3/4 HX HD TYPE F                | 2.000 EA |
| HW1001A25              | LOCKWASHER 1/4, ZINC PLT .493 OD, .255 I | 2.000 EA |
| HA1005A07SP            | SLINGER, OD 2.25, ID 1.344, 307 BRG      | 1.000 EA |
| HW4600B33              | V-RING SLINGER 1.375 X 1.890 X 0.350     | 1.000 EA |
| HW2501F21              | KEY, 5/16 SQ X 2.375                     | 1.000 EA |
| HA7000A02              | KEY RETAINER RING, 1 1/8 DIA, 1 3/8 DIA  | 1.000 EA |
| MJ5001A01              | 46-665 RED SEALER                        | 0.001 QT |
| 85XU0407S04            | 4X1/4 U DRIVE PIN STAINLESS              | 2.000 EA |
| LB1115                 | LABEL,LIFTING DEVICE                     | 1.000 EA |
| LB1002                 | LABEL,MARINE DUTY (ON ROLLS)             | 1.000 EA |
| MJ1000A75              | GREASE, POLYREX EM EXXON                 | 0.050 LB |
| HA3104A32              | THRUBOLT- 5/16-18 X12.750                | 4.000 EA |
| MG1025N19              | PAINT, 778.50 WILKO, RELIANCE ELEC GREEN | 0.036 GA |
| LC0005E01              | CONN.DIA./WARNING LABEL (LC0005/LB1119)  | 1.000 EA |
| LB1125C02              | SUPER-E (STOCK CTN LABEL SUPER-E WITH FL | 1.000 EA |
| LB1357                 | ENERGY GUIDE LABEL (BOX LABEL)           | 1.000 SH |
| NP1260E                | SS CP SUPER-E UL CSA CC                  | 1.000 EA |

| Parts List (continued) |                              |          |
|------------------------|------------------------------|----------|
| Part Number            | Description                  | Quantity |
| 07PA1011               | PKG GRP, 07 CAST IRON PK1181 | 1.000 EA |

| Performance Data at 460V, 60Hz, 10.0HP (Typical performance - Not guaranteed values) |                                 |        |        |                      |            |        |        |
|--|---------------------------------|--------|--------|----------------------|------------|--------|--------|
| General Characteristics  |                                 |        |        |                      |            |        |        |
| Full Load Torque:  | 29.8 LB-FT                      |        |        | Start Configuration: | DOL        |        |        |
| No-Load Current:   | 5.12 Amps                       |        |        | Break-Down Torque:   | 87.0 LB-FT |        |        |
| Line-line Res. @ 25°C.:  | 0.973 Ohms A Ph / 0.0 Ohms B Ph |        |        | Pull-Up Torque:      | 51.9 LB-FT |        |        |
| Temp. Rise @ Rated Load:   | 60 C                            |        |        | Locked-Rotor Torque: | 57.5 LB-FT |        |        |
| Temp. Rise @ S.F. Load:  | 76 C                            |        |        | Starting Current:    | 88.5 Amps  |        |        |
| Load Characteristics   |                                 |        |        |                      |            |        |        |
| % of Rated Load  | 25                              | 50     | 75     | 100                  | 125        | 150    | S.F.   |
| Power Factor:  | 44.0                            | 67.0   | 78.0   | 82.0                 | 84.0       | 85.0   | 83.0   |
| Efficiency:  | 90.0                            | 92.9   | 93.1   | 92.5                 | 91.4       | 90.1   | 91.8   |
| Speed:   | 1790.0                          | 1781.0 | 1771.0 | 1762.0               | 1750.0     | 1739.0 | 1755.0 |
| Line Amperes:  | 5.84                            | 7.52   | 9.75   | 12.3                 | 15.2       | 18.3   | 14.0   |

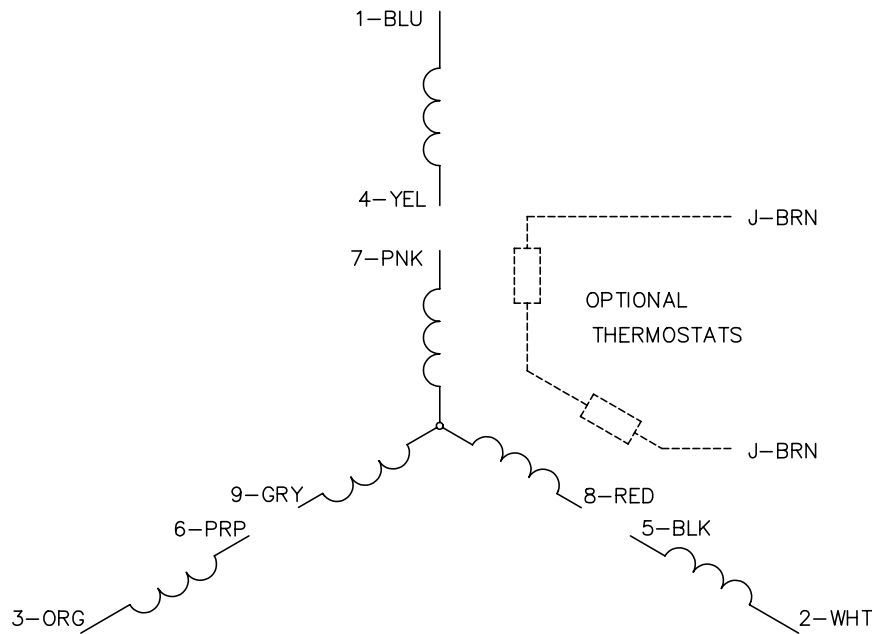
Performance Graph at 460V, 60Hz, 10.0HP Typical performance - Not guaranteed values



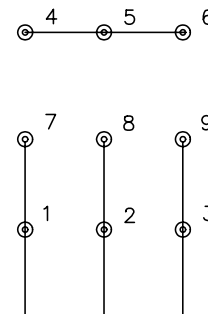




CD0005

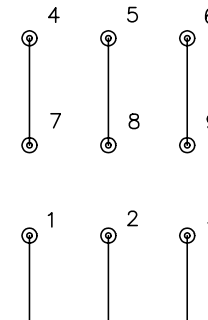


LOW VOLTAGE  
(2Y)



LINE

HIGH VOLTAGE  
(1Y)



LINE

NOTES:

1. INTERCHANGE ANY TWO LINE LEADS TO REVERSE ROTATION.
2. OPTIONAL THERMOSTATS ARE PROVIDED WHEN SPECIFIED.
3. ACTUAL NUMBER OF INTERNAL PARALLEL CIRCUITS MAY BE A MULTIPLE OF THOSE SHOWN ABOVE.
4. LEAD COLORS ARE OPTIONAL. LEADS MUST ALWAYS BE NUMBERED AS SHOWN.

|   |         |                         |              |
|---|---------|-------------------------|--------------|
| REV. DESC: REVISE TO SHOW OPTIONAL COLORS |         |                         |              |
| REV. LTR: E                               | BY: JLP | REVISED: 01/19/99 10:15 | TDR: 0171435 |
| 90000                                     |         | FILE: AAA00005140       | MDL: -       |
|   |         | MTL: -                  |              |

**BALDOR ELECTRIC Co.**

3PH, DV, 9 LEADS

CD0005